

# Suffolk Newsletter

## The United Suffolk Sheep Association

### PRESIDENT'S MESSAGE

Hello Suffolk Enthusiasts,

Hope this letter finds you well and enjoying Suffolk Sheep. Your United Suffolk Sheep Association Board of Directors has been busy working for this association. I wanted to update you on some of the results of those activities.

You have probably heard that the USSA BOD participated in a weekend retreat this past May. During the 3 days of the deliberation, this group of Suffolk breeders put their personal agendas at the door and truly looked for ideas and avenues to better our breed. The outcome from this strategic planning session was three key pathways that the Board felt the association needed to pursue for the advancement of the breed. In no particular order they are:

- \* Maintain an economically viable office.
- \* Promote a more user-friendly Suffolk Sheep.
- \* Re-establish an association connection to the commercial sheep industry.

It goes without saying that the USSA office needs to be profitable to sustain our registry. To that end the BOD has been very frugal in budgeting money for association activities. For example, all BOD paid their own way to attend the retreat in May, Directors have not been allowed travel expenses for at least 3 years to attend our Annual and Sedalia Meetings, and last year the association financially finished the year in the black. The United Suffolk Sheep Association has been blessed in recent years to have some Board Members, Treasurers, and an Executive Secretary that closely watches our bottom line.

Secondly, to grow our association we need to have a product that consumers demand. The demand for Suffolk sheep needs to be elevated in the meat market, the commercial sheep industry and the showing (whether the market lamb sector or the breeding sheep side of the fence). In the last 30 years the Suffolk market share has decreased significantly in all of these venues. Some of those things were out of our control, the loss of the Gramm Rudman Act of 1985 and the loss of the Wool Subsidy in 1993, but it is imperative that our association looks at all chances to reverse

(Continued on page 2)

### Welcome!

...new members, returning past members (whom have not been active in recent years) and past UJSSA members who have joined the USSA during June, July & August 2013.



- ◆ Bauer Family, NE
- ◆ Rachel Blosser, PA
- ◆ Brandon & Mike Blume, WI
- ◆ Alan DeBruin, IA
- ◆ Jacob Dowker & Corey Hayes, NY
- ◆ Richard Feasley, NY
- ◆ Lori Hughes, IN

- ◆ Mike & Missi Jones, IN
- ◆ Dr. Paul Knier, WI
- ◆ Allison McGolden, OK
- ◆ Ellis Nelson, NE
- ◆ Northern Starr Livestock, MN
- ◆ Kara Paul, WI
- ◆ Rainbow Meadow Farms, CA

- ◆ Ryan Schumacher, IA
- ◆ Thiner Suffolks, MN
- ◆ James & Evelyn Weissmann, NY
- ◆ Wolf Club Lambs, IA
- ◆ BJ Wright, IA
- ◆ Zeigler Suffolks, CA

September 2013

Volume 2, Issue 7

#### Inside this issue:

Suffolks in the News	3
USSA Board Update	5
Ambassador's Message	5
UJSSA President's Message	6
2013 Junior Show Results	8
Suffolk Associations Close to Home	12
News from the American Sheep Industry	13
Current Futurity Points Standings	15
Learning Opportunities	16
Member News	18
Director Bios	20
Classified Ads	24
Calendar of Events	26

# USSA BOARD OF DIRECTORS

## Officers

### **President:**

**Rob Zelinsky** (Exp. 2014)  
Brookings, SD  
605-354-8248  
robzelinsky@yahoo.com

### **Vice President:**

**Bill MacCauley** (Exp. 2013)  
Atglen, PA  
Home: 610-593-2907  
Cell: 610-256-1608  
billmac@johnrock.com

### **Treasurer:**

**Rex Quam** (Exp. 2014)  
Dodge Center, MN  
Home: 507-374-2976  
Cell: 507-251-2650  
Rex.Quam@Riverland.edu

## District 1

**Donna Mays** (Exp. 2014)  
Howe, ID  
208-767-3405  
lostriverdm@yahoo.com

**Larry Pauly** (Exp. 2013)  
Delta, UT  
435-864-2777  
l\_pauly@msn.com

**Keith Pumphrey** (Exp. 2015)  
Walla Walla, WA  
509-529-0140  
jkpumphrey@hotmail.com

## District 2

**Virginia Gergen** (Exp. 2015)  
Lincoln, NE  
402-477-7333  
veegergen@yahoo.com

**Amanda Dobson** (Exp. 2013)  
Lexington, MO  
660-232-1433  
ab\_vettech@yahoo.com

## District 3

**Kim Ketcham** (Exp. 2013)  
Edwardsville, IL  
Home: 618-656-5388  
Cell: 618-581-3554,  
kimketcham@hotmail.com

**Paul Skartvedt** (Exp. 2015)  
Radcliffe, IA  
515-450-1302  
skarby67@yahoo.com

## District 4

**Diane Russell** (Exp. 2015)  
Eaton, IN  
765-288-4845  
farmer1224@hughes.net

**Lisa Webster** (Exp. 2014)  
Windham, ME  
Home: 207-892-2161  
northstarfarms@me.com

*(Continued from page 1)*

this trend and create new business opportunities. Standing on the sideline and “letting things take their own course” is not a viable option. The advancement of this breed depends on molding a Suffolk that is in demand in these facets of the sheep industry. Recognizing a Suffolk that fits the needs of a larger segment of the sheep industry could build some unity within the breed and gain more leverage in the marketplace.

In addition, if Suffolks have a greater presence in the commercial sheep industry that builds USSA business. There is no other segment of the sheep industry that offers more opportunity for expansion for Suffolk breeders than the number of ewes present in the commercial sheep business. To compete in this venue, performance records and carcass merit will play a key role. Suffolk breeders have the opportunity to report this information in NSIP. The ability for every Purebred Suffolk breeder to merchandise a larger portion of their rams to commercial sheep producers puts more revenue in the sheep economy and, in turn, will stimulate business for the USSA office and its members. Ironically, two months after our session the American Lamb Board called our office and I had a chance to speak one-on-one with their strategic planner and they want to continue dialogue as both groups move forward in their planning process.

One of the best outcomes of the Strategic Planning Session was to, once again, realize the phenomenal diversity and tremendous potential of the Suffolk Breed. That is one thing Suffolks have always be able to “hang their hat on”, not many breeds have the capabilities to be an all-encompassing breed. Our challenge is to turn that potential into reality.

Finally, this Board has developed a USSA Suffolk Hall of Fame to honor “Legends of the Suffolk Breed”. Please join us at our Annual Meeting in Louisville to pay homage for those that have created the fingerprint of the Suffolk breed in the United States! The recognition banquet will be held on Tuesday, November 19<sup>th</sup> during the annual meeting. This will be an awesome opportunity to enjoy some good food, great Suffolk discussion, and re-connect with the “Legends of the Breed”. Make sure you are in attendance for this inaugural event.

Sincerely,

Rob Zelinsky

# SUFFOLKS IN THE NEWS

## Study Reveals Top Traits of Different Sheep Breeds

Sheep producers in western states can get a better idea of which breeds are best suited for their operations, based on a comprehensive evaluation by U.S. Department of Agriculture (USDA) scientists of the animals used to produce market lambs.

The USDA scientists and their university colleagues examined critical performance traits of lambs sired by rams of Columbia, Suffolk, Texel and a composite breed developed at the Agricultural Research Service's (ARS) U.S. Meat Animal Research Center in Clay Center, Neb.

In the study at ARS U.S. Sheep Experiment Station near Dubois, Idaho, the scientists evaluated lamb survival, growth, body composition, efficiency and carcass merit and value.

Rams from each breed were mated to Rambouillet ewes, producing more than 1,800 lambs over a three-year period. Suffolk-sired lambs were larger at birth, grew faster and had a survival rate as good as or better than other crossbred lambs.

After weaning, lambs were fed a high-energy diet and weighed weekly. Suffolks had the most rapid gains, most desirable leanness and were equal or superior to other lambs in growth, fat depth and loin muscle area.

When examined for feed efficiency, Suffolks also scored better than other breeds. Columbia-sired lambs required more than 15 pounds of additional feed compared with other groups.

At comparable market weights, Texels had heavier carcass weights and larger loin muscle areas, but were also fatter than lambs sired by the other breeds.

While the Suffolk scored the highest in most performance traits, other breeds still have desirable qualities. The Texel can produce heavily muscled lambs ready for market at younger ages. The Columbia is valuable for wool production and might be used as both a maternal and sire breed. The composite, developed mainly as a genetic resource, may be useful in stressful production environments that favor a lamb with intermediate growth potential.

Scientists are developing new germplasm resources in an effort to capture each breed's positive traits and incorporate them into a higher-performance breed.

Read more about this research in the August 2013 issue of Agricultural Research magazine at [www.ars.usda.gov/is/AR/archive/aug13/rams0813.htm](http://www.ars.usda.gov/is/AR/archive/aug13/rams0813.htm).



**Do you know a junior that would like to win a Suffolk Ewe lamb?**

**How to enter:** Submit a video, two minutes or less telling who you are, why you want a Suffolk Ewe Lamb and how it will impact your life.

**Deadline:** Email the Video along with your name, birth date & contact information to [info@u-s-s-a.org](mailto:info@u-s-s-a.org) by November 1, 2013. The winner will be announced during the Suffolk Open Show at NAILE.

Open to juniors age 18 or younger as of January 1, 2013 who do not currently own registered Suffolks.

## Midwest Regional Junior Suffolk Show

*Submitted by Sam & Pat Wiford*

The following are the results of the 2013 Mid-West Regional Jr. Suffolk Show held Thursday, August 1st at the Ohio State Fair in Columbus, OH. The exhibitors from several states enjoyed a day of fun and fellowship at the Ohio State Fair.

### **Class #1 Fall Rm Lamb (9-01-12-thru 12-31-12)**

1)MacCauley 2710, Chris MacCauley, PA; 2) Johannes FF 1301, Hannah Johannes, OH

### **Class #2 Jr. Ram Lamb (Jan 1, 2013 & After)**

1)D. Henderson 13-7, Clayton Henderson, IN; 2)MacCauley 2819, Chris MacCauley, PA; 3)Fair FF 12, Ethan Fair, OH; 4) D. Henderson 13-18, Sidney Jacobs, IN; 5)Triple J 24-13, James Ernst, OH; 6)Fair FF 10, Ethan Fair, OH; 7) Triple J 19-13, Jennifer Ernst, OH

### **Class #3 Slick Ram Lamb (Jan 1, 2013 & After)**

1)MacCauley 2756, Chris MacCauley, PA; 2)Frostaire Farm 1121, Jennifer Frost, OH; 3)MacCauley 2802, Kyle MacCauley, PA; 4) Frostaire Farm 1132, Katie Frost, OH; 5)Triple J 22-13, James Ernst, OH

### **Class #4 Fitted Yr. Ewe (Sept 1, 2013 & After)**

1)MacCauley 2542, Chris MacCauley, PA; 2) Breezeview 144, Brooke Mazepink, PA; 3) D. Henderson 12-10, Clayton Henderson, IN; 4) J. Matthews 12B9, Ryan Matthews, OH; 5) J. Matthews 12B6, Rachel Matthews, OH; 6) Casey FS 1210, Robbie Casey, OH; 7) Casey FS 1260, Robbie Casey, OH; 8)Robinson F 03 1012, Shelbie Robinson, OH

### **Class #5 Slick Yr. Ewe (Sept 1, 2011 & After)**

1)MacCauley 2619, Chris MacCauley, PA; 2) Kimm 072000, Jason Mazepink, PA; 3) Frostaire F 1056, Jennifer Frost, OH; 4) MacCauley 2544, Kyle MacCauley, PA; 5)MacCauley 2577, Brady Henderson, IN; 6) Wiford 297, Katie Frost, OH; 7)Triple J 175-12, Jennifer Ernst, OH

### **Class #6 Fitted Fall Ewe Lamb (9-1-12 thru 12-31-12)**

1)MacCauley 2718, Chris MacCauley, PA; 2)Johannes FF 1302, Hannah Johannes, OH

### **Class #7 Slick Fall Ewe Lamb (9-1-12 thru 12-31-12)**

1)MacCauley 2716, Chris MacCauley, PA; 2)Kimm 13036, Brady Henderson, IN

### **Class #8 Spring Ewe Lamb (Jan 1 – 31, 2013)**

1)MacCauley 2734, Chris MacCauley, PA; 2)MacCauley 2774, Brady Henderson, IN; 3)D. Henderson 13-8, Sidney Jacobs, IN

### **Class #9A Spring Ewe Lamb (Feb 1 & After)**

1)MacCauley 2818, Chris MacCauley, PA; 2) Quam 11220, Clayton Henderson, IN; 3) Breezeview 150, Brooke Mazepink, PA; 4) Casey F S 1310, Robbie Casey, OH; 5) Johannes FF 1307, Hannah Johannes, OH

### **Class #9B Spring Ewe Lamb (Feb 1 & After)**

1)D. Henderson 13-14, Clayton Henderson, IN; 2)Breezeview 155, Jason Mazepink, PA; 3)J. Matthews 13F9, Rachel Matthews, OH; 4) J. Matthews 13B12, Ryan Matthews, OH; 5) Fair FF 11, Kerrin Fair, OH; 6) Inbody 1328, Megan Inbody, OH

### **Class 10 Slick Ewe Lamb (Jan 1st & After)**

1)MacCauley 2763, Chris MacCauley, PA; 2) MacCauley 2794, Kyle MacCauley, PA; 3)Wiford 354, Jennifer Frost, OH; 4) Wiford 356, Katie Frost, OH; 5) Wiford 333, Joey Crawford, OH; 6)MacCauley 2728, Kerrin Fair, OH; 7) Triple J 26-13, Jennifer Ernst, OH

### **Young Flock**

1)Chris MacCauley, Atglen, PA; 2)Clayton Henderson, Atlanta, IN; 3)Kyle MacCauley, Atglen, PA

Thank you to our sponsors!

Begg Family Suffolks • E. R. Suffolks • George Bros. Suffolks • Jason & Heather Bailey • Bob and Judy Foster • Johannes Family Suffolks • Rex and Reba Robinson • Alvarez Family Suffolks • Sam and Pat Wiford • Bunker Hill Farms • Knapke Suffolks • Orwick Suffolks • Ron & Linda Matthews • MacCauley Suffolks • Dennis Henderson Family • Ohio Suffolk Sheep Association

## *The USSA Board working for the Suffolk Breed....*

*submitted by Keith Pumphrey, District 1 Director*

Dear Suffolk Membership,

Recently we all recently all received a message from our president, Rob Zelinsky, in that he wrote about what took place at Kansas City, May 18th. I want to expand on some different ideas– that may be small, but should help our association evolve into the organization we all want it to be.

FIRST: The formation of a 501 (c)(3), as a foundation within the USSA. This would give all donations (large or small) a tax free status. One can only dream about the potential of the giving, whether it be estates or 1% of an estate. The donor could designate the funds for scholarships, junior shows, or general day to day running of the association. The USSA were to set up under this type of tax structure there would not be any questions asked under the present tax code. This would cost about \$500 to set up, but any donation could be deducted from our taxes.

SECOND: Ewe lamb donation- The juniors applying for this award would present a video to the selection committee, the winning entry would be determined, but now the twist– the winner would be asked, what type of Suffolk would correctly fit their future plans as a Suffolk breeder. This is open to juniors, 18 or younger who currently do not currently own Suffolk Sheep. Please share this great opportunity!

THIRD: All USSA Members should have received a survey recently. We, the BOD, hope to keep producing these types of surveys so that we can be informed, vote how the people in each of our districts want us to vote, and finally create discussion and new ideas so that we can go forward to make better Suffolk sheep.

FINALLY: I hope this finds all of you well. Our thoughts and prayers go out to Joy Hawkins, Gold Bell winner at the Oregon State Fair this year, as of this last weekend she was back in the hospital leading her quacker backers in the Oregon fight song.

See you a Louisville,  
Keith

PS: Besides Louisville, make reservations with Amanda for the first annual “Hall of Fame” banquet. Let’s make the dinner and banquet a very meaningful part of our Suffolk life.



### *A note from your USSA Ambassador, Taylor Peck*

WOW! Just got back from another fantastic National Junior Show, this time, held at Michigan State University in East Lansing, Michigan. The weather was fantastic, the turnout was excellent, the competition was fierce, and teaming up with the All American Junior Sheep Show made a great weekend even better.

I know you’ve heard it before, but the National Jr. Suffolk Show is no ordinary sheep event...it’s something you need to experience in order to truly appreciate all that it has to offer. I can think of no better way for a Suffolk enthusiast of any age to spend the Fourth of July holiday. Thanks to everyone involved in supporting, planning, and running the show.

I am extremely honored to have been named the 2013 Suffolk Ambassador. Now that my junior days, unfortunately, are over, I am very excited to undertake the responsibilities of Ambassador. I am hoping and will work hard to be a visible, reachable, and involved representative of our breed. I am especially looking forward to learning about and meeting breeders from areas of Suffolk production that I am not as familiar with, such as, the needs of the commercial producer and the meat-to-market producer.

There are all types of Suffolk operations across the country. I will have succeeded if I am able to, with your help, promote the fact that all registered Suffolks serve a good and valuable purpose.

Please feel free to contact me any time regarding any concerns that you may have, ideas for better promoting our breed, or just to talk about sheep!

I can be reached at [peck676@yahoo.com](mailto:peck676@yahoo.com) or (908) 328-4053.

# A Message From the UJSSA President...

I would like to greet you with a big "Hello" from the small state of Delaware. Allow me to introduce myself, my name is Connor Vincent and I am your newly elected President for UJSSA. I am 17 years old and I live in Laurel, Delaware about 30 minutes from the Atlantic Ocean. My family raises Suffolk and Border Leicester pure bred sheep. I am active Jr. Leader and officer in 4-H, FFA and I am the Delaware Sheep and Wool Queen. I have represented Delaware nationally in the Make it With Wool Contest and I will be the Delaware representative in the FFA prepared speaking contest at Big E and National FFA convention this fall.

I am very proud to have been elected UJSSA President and am excited to work with our directors, officers and advisors in planning upcoming events for the association. We have Elizabeth Niedziela, Jackie Oelke, Raelynn Thompson, Andrew Slack, Alison Knutson, Rigger Zelinsky, Lily Skartvedt, on our Junior Board of Directors. Joining me on the officer team is Vice President Tayler Wolff, Secretary Jaclynn Knutson and Chris MacCauley as Treasurer. Our relatively new junior advisors are Rebecca Krinsky and Amanda Dobson. A few new faces, fresh ideas and lots of enthusiasm ready to make the 2014 NJSS the best yet. In addition we are very fortunate to have Taylor Peck as our new ambassador. Taylor comes to us with lots of experience and willingness to get the job done. We are hoping to see her promoting our breed in the lead nationally, possibly on TV or in publications. We are always looking for new fundraising ideas and suggestions. If you have an idea please feel free to contact me.



2014 UJSSA Board of Directors

For those of you who were not able to join us in July for the National Junior Suffolk Show, you missed a fun time. Seventy three Suffolk Junior exhibitors brought 236 sheep from across the nation, to East Lansing Michigan, home of Michigan State University. We spent Fourth of July weekend with our sheep friends who show in the All American. We joined the All American in their basket ball tournaments, pie and ice cream socials, and a pool party and they participated in our fitting contest. There are too many to name and I am afraid I may miss someone, but on behalf of the Jr. Board of Directors and Advisors, a big thank you to all our supporters, donors, judges, participants, announcers, we are so grateful to have Mr. Tom Burke share his time with us, but most importantly all the parents without you our show would not be possible.

It's not all about the ribbons, banners and certainly not about the premiums we win with our sheep, but about the experiences we have, the friends we make and the places we see along the way that will last a life time. On the flight to Michigan, I was writing my speech for the Delaware Sheep and Wool Queen contest. It came to my attention that aside from teaching me responsibility, respect, dedication and resourcefulness, I have been fortunate enough to have traveled to 9 states and counting with my sheep and I can name almost 200 people who I have met and I consider my friends not just acquaintances who all share one common interest.....sheep. I encourage you, if you've never experienced a National Junior Suffolk Show; you need to make plans to join us for the 2014 NJSS in Kansas. Follow us down the yellow brick road to the land of AHHHHs for lots of fun, friendships new and old, and memories that will last a life time.

I hope you are having a great show season at your county and state fairs, remember to keep Suffolks the breed in the lead. You can contact me at [connor.vincent33@gmail.com](mailto:connor.vincent33@gmail.com) or call/text 302-858-2841

Connor Vincent



## Have a great 2013 / 2014 SCHOOL YEAR!

# Notes for UJSSA Members

**Attention Suffolk Breeders!** Would you be willing to help the UJSSA plan and coordinate the 2014 National Junior Suffolk Show to be held in Hutchinson, Kansas? The UJSSA is looking for volunteers to help with this year's events. If interested, contact UJSSA President, Connor Vincent.

**2014 National Junior Suffolk Sheep Show Sponsorship** Would you like to help sponsor the 2014 National Junior Suffolk Show? If you are interested in sponsoring a specific class or would like to just be a general sponsor please contact Connor Vincent, Amanda Dobson, Rebecca Krinsky or the USSA Office!

**UJSSA Silent Auction** The UJSSA will be having a Silent Auction throughout the events at NAILE. If you are interested in supporting the UJSSA and would like to donate an item/gift basket for the UJSSA Silent Auction, please contact UJSSA President, Connor Vincent.

**UJSSA Meeting** There will be a UJSSA Meeting on Saturday, November 16th at 6pm during NAILE in Louisville, Kentucky. Meeting location will be posted at the USSA Booth at NAILE. Please feel free to join in on the meeting!



**2013 NATIONAL JUNIOR SUFFOLK SHOW**

Now posted on the [UJSSA Website](http://www.ujssa.org):

**Complete Results • Photos • 2014 UJSSA Directors**

**CHECK OUT THE  
SHOW RESULTS  
ON THE UJSSA  
SITE!**

## UJSSA Board of Directors

[www.ujssa.org](http://www.ujssa.org)



The UJSSA is on facebook!

### Officers

**President:** Connor Vincent, Laurel, DE  
302-858-2841,  
connor.vincent33@gmail.com

**Vice President:** Tayler Wolff, Oakes, ND  
701-783-4514, wolff.tayler@gmail.com

**Secretary:** Jaclynn Knutson, Centerville, SD  
605-670-2147, JK3368@k12.sd.us

**Treasurer:** Chris MacCauley, Atglen, PA  
484-319-8376, cmac.sheep@yahoo.com

### Ambassador

**Taylor Peck**, Pittstown, NJ  
908-328-4053, peck676@yahoo.com

### Directors

**Codee Gilbertson**, Sherwood, ND  
701-833-6754, 22and5@gmail.com

**Elizabeth Niedziela**, Hadley, MA  
413-585-9158, niedziela@gmail.com

**Andrew Slack**, Lake Geneva, WI  
262-903-1326, Kslack-  
suffolks@yahoo.com

### Junior Coordinators

**Amanda Dobson**, Lexington, MO  
660-232-1433, ab\_vettech@yahoo.com

**Rebecca Krinsky**, Washington, OK  
405-501-1593,  
krinskyhamps@gmail.com

### Interns

**Alison Knutson**, Centerville, SD  
605-660-9881, ajknutson@iw.net

**Jackie Oelke**, Barrett, MN  
218-731-7748, jsoelke@gmail.com

**Lily Skartvedt**, Radcliffe, IA  
515-290-2470,  
lily.skartvedt@yahoo.com

**Raelynn Thompson**, Patoka, IN  
812-779-6059, raelynn023@gmail.com

**Riggen Zelinsky**, Brookings, SD  
605-695-7791,  
christy.zelinsky@yahoo.com

# 2013 National Junior Suffolk Show Results

The 2013 National Junior Show was a great 4th of July weekend—friends, family & Suffolk Sheep! There were 73 attendees exhibiting 236 sheep representing 13 states! Wow! Thank you to all the sponsors who make the junior show such a success. If you would like to sponsor the 2014 Junior Show please contact the USSA Office, Connor Vincent, UJSSA President or the UJSSA Coordinators Amanda Dobson and Rebecca Krinsky.



## **Suffolk Market Lambs - Sponsored by Mayo Club Lambs , DDJ Suffolks & Club Lambs**

1) Raelynn Thompson, IN; 2) Garrett Friesen, IN; 3) Jake Broehm, WI; 4) Raelynn Thompson, IN; 5) Jacen Wilinski, WI; 6) Katrina Tucker, MI

## **Class 1 Suffolk-Cross Market Lambs**

1) Austin Jackson, WI; 2) Avery Jones-Taylor, IN; 3) Robert Casey, OH; 4) Sharlene Swedlund, WI; 5) RaeAnna Johnston, WI

## **Class 2 Suffolk-Cross Market Lambs**

1) Raelynn Thompson, IN; 2) Robert Casey, OH; 3) Jarrod Broehm, WI; 4) Sharlene Swedlund, WI; 5) Jacen Wilinski, WI; 6) Nicole Dittbrenner, WI

## **Champion Market Lamb - Raelynn Thompson (Class 2 Suffolk-Cross)**

**Reserve Champion Market Lamb - Robert Casey (Class 2 Suffolk-Cross)**

## **Suffolk Yearling Wether Dams - Sponsored by Mayo Club Lambs**

1) Grant Friesen, IN; 2) Chris MacCauley, PA; 3) Chris MacCauley, PA; 4) Jeremy Russell, IN; 5) Brody Terrell, IN

## **Class 1 Suffolk Ewe Lamb Wether Dams**

1) Jeremy Russell, IN; 2) Garrett Friesen, IN; 3) Jacen Wilinski, WI; 4) Grant Friesen, IN; 5) Nicole Dittbrenner, WI

## **Class 2 Suffolk Ewe Lamb Wether Dams**

1) Chris MacCauley, PA; 2) Jackie Oelke, MN; 3) Taylor Peck, NJ; 4) Raesa Zelinsky, SD; 5) Kelly Raterink, MI; 6) Chris MacCauley, PA

## **Suffolk-Cross Yearling Wether Dams - Sponsored by Danny Westlake**

1) Jeremy Russell, IN; 2) Jake Broehm, WI; 3) Austin Jackson, WI; 4) Jarrod Broehm, WI; 5) Victoria Arnevik, WI

## **Suffolk-Cross Ewe Lamb Wether Dam - Sponsored by Northern Starr/Jeff Repasky**

1) Garrett Friesen, IN; 2) Jake Broehm, WI; 3) Jarrod Broehm, WI; 4) Lily Skartvedt, IA; 5) Austin Jackson, WI; 6) Kari Knuth, WI; 7) Victoria Arnevik, WI; 8) RaeAnna Johnston, WI; 9) Landon Skartvedt, IA

## **Champion Wether Dam - Grant Friesen - Slack 2197 (Suffolk Yearling)**

**Reserve Champion Wether Dam - Chris MacCauley - MacCauley 2827 (Class 2 Suffolk Ewe Lamb)**

## **Slick Shorn Yearling Ewes**

1) Chris MacCauley, PA; 2) Lily Skartvedt, IA; 3) Andrew Slack, WI; 4) Taylor Peck, NJ; 5) Brady Henderson, IN; 6) Kyle MacCauley, PA; 7) Jake Broehm, WI; 8) Jarrod Broehm, WI; 9) Tyler Gressel, IL; 10) Dylan Young, IN

## **Production Yearling Ewes**

1) Chris MacCauley, PA; 2) Austin Jackson, WI; 3) Nicole Dittbrenner, WI; 4) Taylor Peck, NJ; 5) Taylor Peck, NJ

## **Slick Shorn Fall Ewes**

1) Jeremy Russell, IN; 2) Chris MacCauley, PA; 3) Nicole Dittbrenner, WI; 4) Brady Henderson, IN; 5) Jarrod Broehm, WI

## **Sr. Champion Slick Shorn Ewe - Sponsored by Wayne Skartvedt Family - Jeremy Russell - Russell 3003 (Slick Shorn Fall Ewe)**

**Res. Sr. Champion Slick Shorn Ewe- Chris MacCauley - MacCauley 2716 (Slick Shorn Fall Ewe)**

## **Senior Champion Production Ewe - Chris MacCauley - Kimm 09009-12127 (Production Yearling Ewe)**


**Res. Sr. Champion Production Ewe - Austin Jackson - River Bend Farm Suffolks 1727 (Production Yearling Ewe)**

## **Slick Shorn Junior Ewe Lambs**

1) Rikken Zelinsky, SD; 2) Jeremy Russell, IN; 3) Chris MacCauley, PA; 4) Kyle MacCauley, PA; 5) Rhett Zelinsky, SD; 6) Chris MacCauley, PA; 7) Andrew Slack, WI; 8) Milly Geske, MN; 9) Jarrod Broehm, WI; 10) Tyler Gressel, IL; 11) Dylan Young, IN; 12) Tyler Gressel, IL

## **Production Junior Ewe Lambs**

1) Nicole Dittbrenner, WI; 2) Chris MacCauley, PA; 3) Nicole Dittbrenner, WI



**Detailed  
Show Results  
are on the  
UJSSA Site**

(Continued on page 9)

(Continued from page 8)

**Junior Champion Slick Shorn Ewe - Rikken Zelinsky - BarZel 3008 (Slick Shorn Jr. Ewe Lamb)**  
**Res. Jr. Champion Slick Shorn Ewe – Jeremy Russell - Russell Sheep Co. 3007 (Slick Shorn Jr. Ewe Lamb)**

**Junior Champion Production Ewe - Nicole Dittbrenner - Dittbrenner 13-PL102**  
**Res. Jr. Champion Production Ewe - Chris MacCauley - MacCauley 2729**

**Grand Production Ewe - Sponsored by Bar-Zel Suffolks - Nicole Dittbrenner - Dittbrenner 13-PL102 (Production Jr. Ewe Lamb)**  
**Res. Grand Production Ewe - Sponsored by Kimm Suffolks - Chris MacCauley - Kimm 09009-12127 (Production Yrlg Ewe)**

**Grand Slick Ewe - Sponsored by MacCauley Suffolks - Rikken Zelinsky - BarZel 3008 (Slick Shorn Jr. Ewe Lamb)**  
**Res. Grand Slick Ewe - Sponsored by Greg & Mary Ahart - Jeremy Russell - Russell Sheep Co. 3007 (Slick Shorn Jr. Ewe Lamb)**

**Class 1 Owned Yearling Ewes - Sponsored by Ruby Mountain Sheep Co.**

1) Taylor Peck, NJ; 2) Abigayle Burns, IN; 3) Paige Vincent, DE; 4) Tayler Wolff, ND; 5) Nick Marshall, MI; 6) Jarrod Broehm, WI; 7) Trevor Meserve, MA; 8) Nick Marshall, MI; 9) Cassidy Fletcher, IN; 10) Dylan Young, IN

**Class 2 Owned Yearling Ewes - Sponsored by Ruby Mountain Sheep Co.**

1) Jackie Oelke, MN; 2) Tessa Skartvedt, IA; 3) Taylor Peck, NJ; 4) Clayton Henderson, IN; 5) Jake Broehm, WI; 6) Jake Broehm, WI; 7) Connor Vincent, DE; 8) Tayler Wolff, ND; 9) Reed Wendel, ND; 10) Victoria Arnevik, WI

**Class 1 Bred & Owned Yearling Ewes - Sponsored by Mt. Salem Suffolks**

1) Jacinda Thompson, IN; 2) Zach Schoelerman, IA; 3) Andrew Slack, WI; 4) Jaclynn Knutson, SD; 5) Codee McClure, IL; 6) Michael Geske, MN; 7) Rachel Matthews, OH; 8) Andrea Young, IN

**Class 2 Bred & Owned Yearling Ewes - Sponsored by Mt. Salem Suffolks**

1) Jaclynn Knutson, SD; 2) Andrew Slack, WI; 3) Raelynn Thompson, IN; 4) Thomas Thompson, IN; 5) Chris MacCauley, PA; 6) Codee McClure, IL; 7) Brooke Mazepink, PA; 8) Ryan Matthews, OH

**Owned Fall Ewes**

1) Taylor Peck, NJ; 2) Landon Skartvedt, IA; 3) Nick Marshall, MI; 4) Ty Skartvedt, IA; 5) Jarrod Broehm, WI

**Bred & Owned Fall Ewes**

1) Chris MacCauley, PA

**Sr. Champion Owned Ewe –Sponsored by Damman Suffolks- Jackie Oelke - JMG 1205 (Class 2 Owned Yearling Ewes)**  
**Res. Sr. Champion Owned Ewe – Tessa Skartvedt - Skartvedt 4474 (Class 2 Owned Yearling Ewes)**

**Sr. Champ Bred & Owned Ewe - Sponsored by Quam Suffolks & Amanda Dobson - Jacinda Thompson - 5 Star 'J' 2108-12 (C1 B&O Yrlg Ewe)**  
**Res. Sr. Champion Bred & Owned Ewe -Zach Schoelerman - Schoelerman 1203 (Class 1 Bred & Owned Yrlg Ewes)**

**Class 1 Owned Junior Ewe Lambs**

1) Jackie Oelke, MN; 2) Taylor Peck, NJ; 3) Tayler Wolff, ND; 4) Jackie Oelke, MN; 5) Brady Henderson, IN; 6) Tayler Wolff, ND; 7) Sidney Jacobs, IN; 8) Reed Wendel, ND; 9) Rose Wendel, ND; 10) Nicole Dittbrenner, WI; 11) Jarrod Broehm, WI; 12) RaeAnna Johnston, WI

**Class 2 Owned Junior Ewe Lambs**

1) Taylor Peck, NJ; 2) Clayton Henderson, IN; 3) Luke Potter, MI; 4) Jake Broehm, WI; 5) Ryder Wendel, ND; 6) Cassidy Schakel, IN; 7) Brody Terrell, IN; 8) Clayton Henderson, IN; 9) Chaz McMurtry, IN; 10) Elizabeth Leadly, IL; 11) Cassidy Fletcher, IN

**Class 1 Bred & Owned Ewe Lambs**

1) Chris MacCauley, PA; 2) Raesa Zelinsky, SD; 3) Chris MacCauley, PA; 4) Kyle MacCauley, PA; 5) Kasi Knutson, SD; 6) Jake Broehm, WI; 7) Michael Geske, MN; 8) Codee McClure, IL

**Class 2 Bred & Owned Ewe Lambs**

1) Zach Schoelerman, IA; 2) Chris MacCauley, PA; 3) Andrew Slack, WI; 4) Brooke Mazepink, PA; 5) Alison Knutson, SD; 6) Paige Vincent, DE; 7) Robert Casey, OH; 8) Tommy Slack, WI; 9) Andrea Young, IN; 10) Tayler Wolff, ND

**Class 3 Bred & Owned Ewe Lambs**

1) Avery Jones-Taylor, IN; 2) Ty Schoelerman, IA; 3) Rachel Matthews, OH; 4) Tayler Wolff, ND; 5) Kari Knuth, WI; 6) Ryan Matthews, OH

**Class 4 Bred & Owned Ewe Lambs**

1) Joey Slack, WI; 2) Jacinda Thompson, IN; 3) Raelynn Thompson, IN; 4) Shania Knutson, SD; 5) Grant Jennings, OH; 6) Hailey Jennings, OH; 7) Jessica Lindow, WI

(Continued on page 10)

# 2013 National Junior Suffolk Show Results

# 2013 National Junior Suffolk Show Results

(Continued from page 9)

**Jr. Owned Ewe - Sponsored by Vincent Farms and Will & Connie Schakel- Jackie Oelke - Hawkins 1302 (C1 Owned Ewe Lamb)**  
**Res. Jr. Owned Ewe -Sponsored by Ralph A. Taylor & Family - Taylor Peck - Annuschat R361 OKK79303 (C2 Owned Ewe Lamb)**

**Jr. Bred & Owned Ewe - Sponsored by Sliver Dollar Farms & Wolff Suffolks - Chris MacCauley - MacCauley 2734 (C1 B&O)**  
**Res. Jr. Bred & Owned Ewe - Raesa Zelinsky - BarZel 3006 (Class 1 Bred & Owned Ewe Lambs)**

**Grand Owned Ewe -Sponsored by Vincent Farms - Jackie Oelke - JMG 1205 (Class 2 Owned Yearling Ewe)**  
**Res. Owned Ewe - Tessa Skartvedt - Skartvedt 4474 (Class 2 Owned Yearling Ewe)**

**Grand Bred & Owned Ewe - Sponsored by 5 Star 'J' Farms - Jacinda Thompson - 5 Star 'J' 2108-12 (C1 B&O Yrlg Ewes)**  
**Res. Grand Bred & Owned Ewe - Sponsored by Stoney Patch - Chris MacCauley - MacCauley 2734 (C1 B&O Ewe Lamb)**

**Supreme Ewe - Sponsored by John Rock, Inc. - Jacinda Thompson - 5 Star 'J' 2108-12 (Class 1 Bred & Owned Yrlg Ewes)**

## **Slick Shorn Yearling Ram**

1) Michael Geske, MN; 2) Landon Skartvedt, IA

## **Yearling Production Ram - Pumphrey Family Suffolks**

1) Austin Jackson, WI

## **Slick Shorn Fall Ram**

1) Chris MacCauley, PA; 2) Tyler Gressel, IL

**Sr. Champion Slick Shorn Ram - Sponsored by Touchdown Acres - Chris MacCauley - MacCauley 2717 (Slick Shorn Fall Ram)**  
**Res. Sr. Champion Slick Shorn Ram - Michael Geske - JMG 1239 RR (Yrlg Ram)**

**Senior Champion Production Ram - Austin Jackson - River Bend Farm Suffolks 1781 (Yrlg Ram)**

## **Slick Shorn Junior Ram Lamb**

1) Raesa Zelinsky, SD; 2) Chris MacCauley, PA; 3) Rikken Zelinsky, SD; 4) Kyle MacCauley, PA; 5) Jake Broehm, WI

## **Production Junior Ram Lamb**

1) Rikken Zelinsky, SD; 2) Kyle MacCauley, PA; 3) Nicole Dittbrenner, WI; 4) Nicole Dittbrenner, WI

**Junior Champion Slick Shorn Ram - Raesa Zelinsky - BarZel 3018 (Slick Shorn Jr. Ram Lamb)**  
**Res. Jr. Champion Slick Shorn Ram - Chris MacCauley - MacCauley 2756 RR (Slick Shorn Jr. Ram Lamb)**

**Junior Champion Production Ram – Sponsored by Dreher Family Suffolks - Rikken Zelinsky - BarZel 3014**  
**Res. Jr. Champion Production Ram - Kyle MacCauley - MacCauley 2802**

**Grand Production Ram - Sponsored by Van Dyke Suffolks - Austin Jackson - River Bend Farm Suffolks 1781 (Yrlg Ram)**  
**Res. Grand Production Ram - Sponsored by Kimm Suffolks - Rikken Zelinsky - BarZel 3014**

**Grand Slick Ram -Sponsored by Lost River Livestock/Donna Mays - Chris MacCauley - MacCauley 2717 (Slick Shorn Fall)**

**Res. Grand Slick Ram - Sponsored by Russell Sheep Co. - Raesa Zelinsky - BarZel 3018 (Slick Shorn Jr. Ram Lamb)**

## **Owned Yearling Ram**

1) Rhett Zelinsky, SD

## **Bred & Owned Yearling Ram**

1) Chris MacCauley, PA; 2) Jacinda Thompson, IN; 3) Andrew Slack, WI; 4) Alison Knutson, SD;

## **Bred & Owned Fall Ram**

1)Chris MacCauley, PA

**Sr. Champion Owned Ram - Royer Farm - Rhett Zelinsky - Harder 2048 (Owned Yrlg Ram)**

**Sr. Champion Bred & Owned Ram - Sponsored by John Corson - Chris MacCauley - MacCauley 2576 (Yrlg Ram)**  
**Res. Sr. Champ Bred & Owned Ram - Winfield Suffolks/Robert Goold & Family - Jacinda Thompson - 5 Star 'J' 2126-12 (Yrlg Ram)**

## **Class 1 Owned Junior Ram Lambs - Sponsored by Gressel Farms**

1) Clayton Henderson, IN; 2) Carissa Haffenbredl, WI; 3) Luke Potter, MI; 4) Cassidy Schakel, IN; 5) Jarrod Broehm, WI; 6) Robert Casey, OH; 7)

(Continued on page 11)

**Thank you to all who sponsored the  
2013 National Junior Suffolk Show!  
Your generosity is greatly appreciated!**

Kassidy Fletcher, IN

**Class 2 Owned Junior Ram Lambs - Sponsored by Gressel Farms**

1) Andrew Slack, WI; 2) Sidney Jacobs, IN; 3) Brody Terrell, IN

**Class 1 Bred & Owned Ram Lambs - Sponsored by Chuck Ream**

1)Jaclynn Knutson, SD; 2) Raesa Zelinsky, SD; 3) Chris MacCauley, PA; 4) Andrew Slack, WI; 5) Kasi Knutson, SD; 6) Tayler Wolff, ND; 7) Victoria Arnevik, WI; 8) Codee McClure, IL; 9) Michael Geske, MN

**Class 2 Bred & Owned Ram Lambs - Sponsored by Chuck Ream**

1) Ty Schoelerman, IA; 2)Chris MacCauley, PA; 3) Shania Knutson, SD; 4) Alison Knutson, SD; 5) Tayler Wolff, ND

**Class 3 Bred & Owned Ram Lambs - Sponsored by Chuck Ream**

1) Andrew Slack, WI; 2) Adalyn Schoelerman, IA; 3) Raelynn Thompson, IN; 4) Avery Jones-Taylor, IN; 5) Connor Vincent, DE; 6) Brooke Maze-pink, PA; 7) Andrea Young, IN; 8) Jarrod Broehm, WI; 9) Kari Knuth, WI

**Jr. Owned Ram - Sponsored by Hawkins Farm Suffolks/Joy Hawkins - Clayton Henderson - D Henderson 13-7 (Class 1 Owned Ram Lambs)**

**Res. Jr. Owned Ram -Sponsored by Double L Livestock/Linda & Larry Pauly- Andrew Slack - Dynamic 54-13 (Class 2 Owned Ram Lambs)**

**Jr. Bred & Owned Ram - Sponsored by Eagle Suffolks - Jaclynn Knutson - Knutson Suffolks 13-9 (Class 1 Bred & Owned Ram Lambs)**

**Res. Jr. Bred & Owned Ram - Ruby Mountain Sheep Co. - Ty Schoelerman - Schoelerman 1312 (Class 2 Bred & Owned Ram Lambs)**

**Grand Owned Ram -Sponsored by Lyn-Lee Farms - Clayton Henderson - D Henderson 13-7 (Class 1 Owned Ram Lambs)**

**Res. Grand Owned Ram - Sponsored by EB Suffolks - Andrew Slack - Dynamic 54-13 (Class 2 Owned Ram Lambs)**

**Grand Bred & Owned Ram - Sponsored by Schoelerman Suffolks - Chris MacCauley - MacCauley 2576 (Bred & Owned Yrlg Ram)**

**Res. Grand Bred & Owned Ram - Sponsored by Reproduction Specialty Group - Jacinda Thompson - 5 Star 'J' 2126-12 (B&O Yrlg Ram)**

**Supreme Ram - Sponsored by Tom Burke - Chris MacCauley - MacCauley 2576 (Bred & Owned Yrlg Ram)**

**State Flock**

1) Iowa, 2) Pennsylvania, 3)Indiana, 4) South Dakota, 5) Minnesota

**Market Lamb/Wether Dam Showmanship**

Junior Showmanship—Raesa Zelinsky

Intermediate Showmanship—Katrina Tucker

Senior Showmanship—Christopher MacCauley

**Breeding Sheep Showmanship**

Junior Showmanship - Sponsored by Harder Suffolks – Raesa Zelinsky

Intermediate Showmanship - Sponsored by Henderson Suffolks - Bret Henderson—Brooke Mazepink

Senior Showmanship - Sponsored by McMillan Suffolks— Taylor Peck

**Fitting Contest - Sponsored by Ketcham's Sheep Equipment**

Junior Division - Zach Schoelerman

Senior Division - Troy Longenecker

**Judging Contest - Sponsored by The Banner Sheep Magazine & Steve & Melinda Paasch**

Senior—1) Nicole Dittbrenner, 2) Taylor Peck, 3) Brooke Mazepink

Junior— 1) Kasi Knutson, 2) Reed Wendel, 3) Michael Geske

**Ewe Lead with Wool**

Youth Division—1) Raesa Zelinsky, 2) Allie Taylor-Jones, 3) Elizabeth Leadly, 3) Luke Potter

Intermediate Division—1) Avery Jones-Taylor, 2) Rachel Matthews, 3) Paige Vincent

Senior Division—1) Connor Vincent, 2) Jackie Oelke, 3) Chris MacCauley

**Cagney Award**—Raesa Zelinsky

**Good Shepherd Award**—Tayler Wolff

**Scrapebook** - Kyle MacCauley

**Advertisement** - Kyle MacCauley

**Photography**

Black and White:

1) Raelynn Thompson, 2) Kyle MacCauley, 3) Jacinda Thompson

Togetherness

1)Kyle MacCauley, 2) Raelynn Thompson

Suffolks

1) Raelynn Thompson, 2)Jacinda Thompson, 3) Kyle MacCauley

**Thank you to all of the general  
show sponsors!**

Steve Knapke • Bret Oelke •  
Jerry Baumgartner • Julie Wog-  
goner • Debbie Olson • Char-  
lotte Dinsmore • Ron Alves •  
Signs by L & J- Rick and Shawn  
Murnahan • Wiford Suffolks •  
Randy & Deb Sanders • Andy  
Asberry • Larry Lofink • Rebecca  
& Josh Krinsky • Jan Henderson  
• Brian Severson • Rachel Dey •  
John & Pam Sponaugle • Brad,  
Rachel Henderson & Family •  
Kate Lambert • Katie Powers •  
Jerome Nelson • Sanders Insur-  
ance Agency • Hoskins Stock  
Farm

# 2013 National Junior Suffolk Show Results

**CALIFORNIA SUFFOLK AND HAMPSHIRE SHEEP BREEDERS' ASSOCIATION** **Website**

## ILLINOIS SUFFOLK SHEEP ASSOCIATION

# IOWA SUFFOLK SHEEP ASSOCIATION

Website Facebook Page

## MINNESOTA SUFFOLK SHEEP ASSOCIATION

# MISSOURI SUFFOLK SHEEP ASSOCIATION

## **MONTANA SUFFOLK SHEEP BREEDERS ASSOCIATION**

### Website

# NORTHEAST SUFFOLK SHEEP ASSOCIATION

Website      Facebook Page

### Facebook Page

## OHIO SUFFOLK SHEEP ASSOCIATION

## PENNSYLVANIA SUFFOLK SHEEP ASSOCIATION

## Facebook Page

## SOUTH DAKOTA SUFFOLK SHEEP ASSOCIATION

## WISCONSIN SUFFOLK SHEEP ASSOCIATION

Website	Facebook Page
---------	---------------

### Facebook Page

**Mark your calendars for....**

# 2014 National Junior Suffolk Sheep Show!

**July 3—6 • Kansas State Fairgrounds • Hutchinson, Kansas**





## *News from the American Sheep Industry*

The following articles were re-printed from the American Sheep Industry Weekly Newsletter. To be added to the email distribution for the American Sheep Industry Weekly please email: [info@sheepusa.org](mailto:info@sheepusa.org).

### **Sheep Drench Study Reveals Resistance Problems**

*Reprinted in part from The Land*

The first national Australian drench-resistance study in sheep for nearly 20 years has uncovered unexpectedly high levels of resistance to commonly used active ingredients in sheep drenches.

The study used parasitology laboratory data from 390 fecal egg count reduction tests conducted on properties across all Australian states.

The results of the study showed a 54-percent prevalence of drench resistance across Australia to moxidectin, a leading sheep drench active ingredient.

There was also a 96-percent prevalence of drench resistance to benzimidazoles and levamisole, the oldest drench classes.

A co-author of the study said the results showed the number of viable drench options sheep producers had available was becoming very limited, very quickly.

### **Reminder of NSIIC Request for Grants**

The National Sheep Industry Improvement Center's (NSIIC) Board of Directors announced it is accepting grant proposals designed to improve the U.S. sheep and goat industries. Applications must be received by Sept. 30 for projects that will be completed on or before June 30, 2015. Awards are expected to be announced on or before Dec. 1.

To be eligible to receive funding, an organization must promote the betterment of the U.S. sheep or goat industries and be a public, private or cooperative organization; an association, including a corporation not operated for profit; a federally recognized Indian Tribe; or a public or quasi-public agency.

Additional information is available at [www.NSIIC.org](http://www.NSIIC.org) or by contacting Steve Lee at 202-350-9065 or [stevelee@nsiic.org](mailto:stevelee@nsiic.org).

### **Instrument Grading Standards**

The American Lamb Board and the National Sheep Industry Improvement Center have funded a study to finalize the instrument grading standard and to evaluate the benefits and effectiveness of the system.

The study is taking place in the Greeley JBS plant with equipment being installed in September. Once the equipment is installed, the U.S. Department of Agriculture (USDA) will conduct a 30-day, in-plant trial of the technology. Data will be summarized, validated and standardized by USDA for future use in assigning USDA quality and yield grades.

After the trial, Colorado State University's Center for Meat Safety and Quality, along with USDA, will conduct an economic evaluation to analyze the benefits and effectiveness of the system and determine the potential return on investment to the industry.

### **New Resource Available from ALB**

The American Lamb Board (ALB) is excited to unveil a new series of videos that showcase the American lamb story from the industry's history and heritage to the important relationships between shepherds and chefs to a behind-the-scenes look at the Lamb Jam Tour. The videos help tell the pasture-to-plate story and demonstrate the great care that goes into producing American lamb.

The video library is available at [www.americanlamb.com/our-lamb-story/history-heritage-videos/?utm\\_source=August+E-news&utm\\_campaign=News+8%2F8&utm\\_medium=email](http://www.americanlamb.com/our-lamb-story/history-heritage-videos/?utm_source=August+E-news&utm_campaign=News+8%2F8&utm_medium=email). A DVD of the videos can be obtained by emailing [courtney@americanlambboard.org](mailto:courtney@americanlambboard.org).

*(Continued on page 14)*

## *News from the American Sheep Industry*

The following articles were re-printed from the American Sheep Industry Weekly Newsletter. To be added to the email distribution for the American Sheep Industry Weekly please email: [info@sheepusa.org](mailto:info@sheepusa.org).

*(Continued from page 13)*

### **USDA Announces Efforts to Assist Ranchers Impacted by Drought**

As severe drought conditions persist in certain regions throughout the country, the U.S. Department of Agriculture's (USDA) Farm Service Agency (FSA) Administrator Juan M. Garcia this week announced temporary assistance to livestock producers through FSA's Conservation Reserve Program (CRP). Under limited conditions, farmers and ranchers affected by drought will be allowed to use certain additional CRP acres for haying or grazing under emergency conditions while maintaining safeguards to the conservation and wildlife benefits provided by CRP. In addition, USDA announced that the reduction to CRP annual rental payments related to emergency haying or grazing will be reduced from 25 percent to 10 percent. Further, the sale of hay will be allowed under certain conditions. These measures take into consideration the quality losses of the hay and will provide needed assistance to livestock producers.

FSA also has taken action under the Emergency Conservation Program to authorize additional expenditures related to drought response to be eligible for cost share, including connection to rural water systems and installation of permanent pipelines. In addition, given the limited budgetary resources and better long term benefits, FSA has increased the maximum cost share rates for permanent practices relative to temporary measures.

Farmers and ranchers are encouraged to contact their local FSA Service Center to report damage to crops or livestock loss. In addition, USDA reminds livestock producers to keep thorough records of losses, including additional expenses for such things as feed purchased due to lost supplies.

### **ASI Market News App**

Lamb markets -- Is there an app for that? Well, yes, as a matter of fact there is. Producers can tap into auctions and prices at any time - while checking on the sheep, between meetings or during lunch.

The American Sheep Industry Association (ASI) has launched its first mobile application providing lamb and wool market information to anyone with a smartphone or tablet. The free market app is available for both Apple and Android operating systems.

"ASI is pleased to offer market information to anyone in the industry with a smartphone," remarks Peter Orwick, ASI executive director.

ASI worked closely with Randy Hammerstrom, officer in charge at the Greeley U.S. Department of Agriculture's (USDA) Agricultural Marketing Service's (AMS) Livestock, Poultry and Grain Market News division, to hand-select the portions of the USDA reports to offer in this first version of the industry market app.

"The app offers a good variety of national reports as well as market results from seven auction barns from around the country," emphasizes Hammerstrom. "Producers can access price data as the information is made available by USDA."

"This app will provide the industry with the convenience of valuable market data anywhere, anytime," says AMS Administrator Anne Alonzo. "Partnerships between USDA and the sheep industry are a critical component to supporting American producers."

The app is titled ASI Market News which can be downloaded from Apple's App Store or the Android Store. From the front page, users can select to search national reports or action reports.

"Producers' thoughts on the usefulness of this tool as well as any ideas on additional information that would be valuable to access from the app is appreciated," says Orwick. "This is a work in progress and we want to provide you with the best possible product."

Also watch Grills Gone Wild! American Lamb - The Choice Meat for Summer Grilling music video at [www.youtube.com/watch?v=sVQxhH6cpIY](http://www.youtube.com/watch?v=sVQxhH6cpIY).

## USSA FUTURITY PROGRAM

Don't forget to send your Futurity Point Record Forms to the office.

### Ewe Lambs Futurity Standings

#### DISTRICT 1

At this time no points have been submitted to the USSA Office

#### DISTRICT 3

74pts Jacklyn Oelke, Barrett, MN, Hawkins 1302

#### DISTRICT 2

55pts Tayler Wolff, Oakes, ND, Quam 11193

50pts Tayler Wolff, Oakes, ND, Quam 11192

42pts Rhett Zelinsky, Brookings, SD, Kimm 09074-13124

23 pts Raesa Zelinsky, Brookings, SD, Kimm 10124-13337

#### DISTRICT 4

53pts Clayton Henderson, Atlanta, IN, Quam 11220

43pts Brady Henderson, Atlanta, IN, MacCauley 2774

### Yearling Ewe Futurity Standings

36pts Tayler Wolff, Oakes, ND, Benda 2015 RR

29pts Tayler Wolff, Oakes, ND, Quam 11023

25pts Katherine Newhouse, State Center, IA, Damman Suffolks 12-138

### ITEMS FOR SALE

To purchase, contact the USSA Office

Plastic Sheet Protectors .....	\$0.20
USSA Window Clings.....	\$1.00
USSA Flock Memo Book.....	\$1.00
USSA Folders.....	\$2.95
USSA 3-ring Binders.....	\$9.50
Suffolks Today & Tomorrow Print.....	\$80.00
Limited Edition Suffolk Sculptures.....	\$195.00



Binder



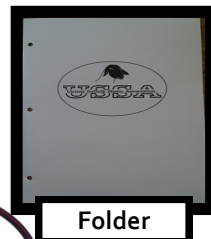
Sculpture



Print



Window Cling



Folder

# Learning Opportunities

## Parasite Management Webinar Available

A New Approach to Parasite Management in Sheep webinar was hosted this week by Will Getz, Ph.D., professor of animal science and extension specialist, and Thomas Terrill, Ph.D., assistant professor of animal science. They discussed the current state of thinking on best management practices for control of internal parasites in sheep.

The recording of the event has been compiled and is available for viewing at the URL:

[www.optimalag.com/webinars/2013-08-27\\_ParasiteManagementinSheep.wmv](http://www.optimalag.com/webinars/2013-08-27_ParasiteManagementinSheep.wmv).

A copy of the slides used by Getz and Terrill for the presentation is posted at the URL:

[www.optimalag.com/webinars/2013-08-27\\_ParasiteManagementinSheep.pdf](http://www.optimalag.com/webinars/2013-08-27_ParasiteManagementinSheep.pdf).

## ASI Schedules Wool Classing School

A Certified Wool Classing School is scheduled for Nov. 23-25 at the Hettinger Research Extension Center in Hettinger, N.D.

The focus of the school is to help train producers, wool industry and interested people about wool quality and classing. In addition, to assist in improving the quality of the domestic wool clip, which is imperative to American wool being more competitive and available in the international as well as domestic markets. Topics to be covered include wool fiber growth, development and production, objective measurement of wool and hands-on wool grading, to name a few.

Ron Cole, wool education consultant for the American Sheep Industry Association, and Lisa Surber, Ph.D., wool lab manager at Montana State University, will be providing the instruction for this course.

The cost for the course is \$175, which includes all handouts and materials.

Additional information for the course can be obtained by contacting Christopher Schauer at Christopher.schauer@ndsu.edu or by calling 701-567-4323.

## Sheep and Goat Research Journals Digitized

*Reprinted from ASI Weekly*

The *Sheep and Goat Research Journal* (previously the *Sheep Research Journal*) began production in 1984 because sheep producers, extension professionals, researchers and others saw the need for a vehicle where practical, adaptive sheep research could be published. The journal provides authors an avenue to publish peer-reviewed research.

"We are excited to report that all of the issues of the journal have now been placed into an electronic file," said Peter Orwick, executive director of the American Sheep Industry Association. "This format allows those interested in reading earlier research to be able to access it easier than hunting down paper copies of the articles."

In 2005, the journal transitioned from a hard-copy publication to an online journal. Work to digitize earlier editions of the journal has been ongoing. Issues dated 1984 to current are now available online at

[www.sheepusa.org/Sheep\\_and\\_Goat\\_Research\\_Journal](http://www.sheepusa.org/Sheep_and_Goat_Research_Journal).

Visit the site frequently as additional issues will continue to be posted.

## New Strategies for Safeguarding Dewormers - and the Sheep

*Reprinted from ASI Weekly*

Managing internal parasites in sheep by regular deworming of all animals is "no longer sustainable," according to an Ohio State University team of researchers. They maintain that frequently observed worm populations resistant to all chemical classes of dewormer available to producers is warning "of the need to develop and adopt additional strategies if we intend to continue using pasture-based systems" for small ruminants.

Ohio State University veterinarian, William Shulaw, teamed up with extension educators, Rory Lewandowski and Jeff McCutcheon, and U.S. Department of Agriculture research biochemist, Joyce Foster, with the Appalachian Farming Systems Research Center, Beaver, W.Va., to explore new strategies for coping with parasites on pasture, the bane of sheep producers.

The full article is available at [www.minnesotafarmguide.com/news/livestock/new-strategies-for-safeguarding-dewormers-and-the-sheep/article\\_dd0b0e3a-ffae-11e2-ab6a-001a4bcf887a.html](http://www.minnesotafarmguide.com/news/livestock/new-strategies-for-safeguarding-dewormers-and-the-sheep/article_dd0b0e3a-ffae-11e2-ab6a-001a4bcf887a.html).

(Continued on page 17)

# Learning Opportunities

(Continued from page 16)

## Sheep Management Education in the comfort of your own home

Continuing with providing various delivery methods of educational information, the Pipestone Lamb and Wool Program launched online courses so sheep enthusiasts can keep current in the comfort of their own home or office.

The most popular course is the [Introduction to Sheep Management course \(LWMP 1001\)](#). This course is the online version of the successful home study course that provides an overview of yearlong sheep management. The course also studies the philosophy of sheep management and its relationship to business goals. Introduction to Sheep Management course is a 14 lesson self-paced course with continuous enrollment. This is a one credit course that has no text book required. The 14 lesson topics include: Getting Started in the Sheep Business; Your Ewes, Your Rams and Their Health ; Breeding Strategies; Lamb Feeding; Facilities and Equipment; Ewe Flock Economics; Wool; Pre-Lambing Management; Lambing Time Management, Difficult Births, Baby Lamb Health; Orphan or Bonus Lambs, Grafting; Creeps and Creep Feeding; Weaning and Weaning Methods; Fitting and Showing Sheep; Raising Versus Buying Replacement Ewes. This course is offered online or through the mail.

Other online course offerings include:

[Equipment and Facilities \(LWMP 1202\)](#)

[Introduction to Sheep Health \(LWMP 1300\)](#)

[Ewe Ration Formulation \(LWMP 1502\)](#)

[Wool Characteristics and Properties \(LWMP 1701\)](#)

Online sheep management courses are an excellent opportunity for youth and adults to learn more about sheep production within their own home or community. These courses are offered each fall. Registration continues until the middle of October.

The Pipestone Lamb and Wool Program is a sheep management education/consulting program offered by Minnesota West Community and Technical College located at Pipestone, Minnesota. The purpose of the program is to help sheep producers increase income and profit through the production of quality lamb and wool. To maximize the profit per ewe and realize the full potential of all sheep through use of modern management practices, new technologies and new approaches to marketing of both lamb and wool.

For more information visit the Pipestone Lamb and Wool Program web page [www.pipestonesheep.com](http://www.pipestonesheep.com) or contact one of the Lamb and Wool instructors, Philip Berg, [philip.berg@mnwest.edu](mailto:philip.berg@mnwest.edu) , (507) 825-6799 or Mike Caskey, [mike.caskey@mnwest.edu](mailto:mike.caskey@mnwest.edu), (507) 825-6808. To register for one of the on-line courses contact Sue Lovell (507) 847-7929, [sue.lovell@mnwest.edu](mailto:sue.lovell@mnwest.edu) or register on-line at [www.mnwest.edu/index.php/registration/online-course-registr](http://www.mnwest.edu/index.php/registration/online-course-registr)

## Have something to share?



We're looking for photos, news, show and sale information, classified ads, recipes, helpful hints & tips, educational opportunities and questions for the question and answer section to include in the Suffolk Newsletter! Or anything else that may be of interest to fellow Suffolk Breeders you would like to share! If you have any suggestions on other items that should be included in the Suffolk Newsletter, please send those ideas as well!

Please submit information by the 25th of the month to be included in the following month's newsletter. Information can be emailed to [news@u-s-s-a.org](mailto:news@u-s-s-a.org) or contact the USSA Office.

## USSA MEMBER NEWS

### ***Our Condolences to the following Suffolk Families:***

**Helen C. (Reasor) Hurst**, age 95, of Greencastle, passed away on Monday, July 1, 2013. Born January 24, 1918 in Lee County, Virginia, she was the daughter of Walker H. and Bertha Lee Reasor. After high school Helen received her RN degree from nurses training at General Hospital in Indianapolis. She married William "Billy" Hurst on June 23, 1949 and he preceded her in death on August 22, 2005. Helen had been a nurse at the Putnam County Hospital and Wishard Hospital, prior to serving as a nurse in the United States Army during WWII. She was a school nurse at South Putnam High School; a homemaker; helped her husband, Billy farm and raising Suffolk sheep; she served as Putnam County Recorder and on the Putnam County Welfare Board, assisting women who were victims of abuse; a caretaker of Deer Creek Cemetery; and very active with the American Red Cross. She was a member of the First Baptist Church; V.F.W.; American Legion; National Suffolk Sheep Association; and was inducted into the Putnam County Agriculture Hall of Fame in 1985; and was known as the "Local Mother Goose" for Ag Day. Survivors include her daughters, Carolyn (Steve) Newton Shotwell and Beverly (Reggie) Ross both of Greencastle; a sister, Marilyn Reasor of Greencastle; three grandchildren, Kimberly (Chad) Beadles, William (Rachel) Newton, and Leah (Clay) Henry; two step-grandchildren, Nicholas (Melissa) Shotwell and Stephanie (Jeremy) Cooper; nine great grandchildren; and several nieces and nephews. She was preceded in death by her husband; parents; granddaughter, Heidi Ross; two brothers, James and Walker Reasor Jr; and a son-in-law, Tom Newton.

**Barbara Ann Kimm**, 67, of Dysart, Iowa died at Covenant Medical Center of a massive heart attack on Tuesday, August 13th. Barb was born December 29, 1945 in Davenport, Iowa, daughter of Herschel and Betty (Kistler) Stripe. She has one younger brother Jim Stripe & wife Sandy. She married Robert George Kimm December 28, 1966 in Cedar Rapids, Iowa at St. Paul United Methodist Church amidst a winter blizzard. Barb met Bob while attending Iowa State University in the early '60's. Barb earned her degree in elementary education and taught first grade for 7 years, the last 3 for the Waterloo School District. She became a stay at home mother after the adoption of their son Ted in 1972 and Flo in 1975. Once the kids were school age Barb worked as a teacher's aide for middle school special ed and an elementary sub in the local schools. She worked in retail sales at a department store and finally she became a rural mail carrier, retiring in 2011. She was a person of great kindness that would go out of her way to help anyone. She had an unwavering love for animals of all kind including Bob's sheep, but especially she loved her cats, her dogs and most recently her chickens. Her grandchildren were her world and she was an avid lover of all things nature....she will truly be missed. Barb is survived by her mother Betty of Rock Island, husband Bob of Dysart, Son Ted Kimm (Sarah) of Bettendorf, daughter Flo Grote and husband Casey of La Porte City and 3 Grandchildren, Ivy, Lily & River and a brother Jim and wife Sandy of Portland, OR. Barb was preceded in death by her father Herschel Stripe.

### SUFFOLK NEWSLETTER ADVERTISING RATES

1 page—\$200/month

1/2 page—\$100/month

1/4 page- \$50/month

Ads should be emailed to: [news@u-s-s-a.org](mailto:news@u-s-s-a.org). Please include the ad size and which months the ad should be run. Ads must be "publish-ready". Submit ads by the 25th of the month to ensure they will be included in the next newsletter.



## *A Great Recipe for Ewe to Try!*

Do you have a lamb recipe that is absolutely delicious you want to share? Do you have a child or junior that loves to cook? We'll feature their recipes, too! Please email it to [news@u-s-s-a.org](mailto:news@u-s-s-a.org) and it may be featured in an upcoming

### **Sweet & Sour Lamb Balls**

Recipe from *Ninety Nine Tasty Tender Lamb Recipes*, By Cathy Cranston

#### Meat Mixture

2lbs ground lamb

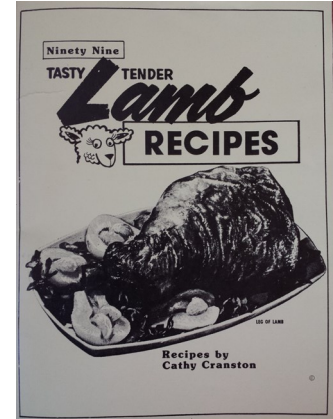
Salt & pepper

Garlic powder (to taste)

1 onion, chopped fine

1/2 cup oatmeal

Mix ingredients well, make into small balls and brown in the oven or electric frypan. Drain off grease



#### Sauce

1/3 cup brown sugar

1 Tbsp four

2 tsp. prepared mustard

2 tsp. water

Mix ingredients and pour over meatballs. Simmer for 1/2 hour.

USSA Member, LaVonne Beckler, Fergus Falls, MN gives this cookbook to all of her customers who purchase locker lambs from her. She says that her customers really like this cookbook as it has many lamb recipes. If you would like more information about this cookbook please contact LaVonne at 218-770-9731 or [clbeckler@hotmail.com](mailto:clbeckler@hotmail.com). Thanks, LaVonne, for sharing this cookbook!



## **USSA ELECTION BALLOTS HAVE BEEN MAILED!**

If you are a USSA member in District 2 or 4, election ballots must be returned (postmarked) by **October 1, 2013**. There is no election in District 1 and 3 as only one individual submitted an intent to run in each district, therefore members in those districts do not need to return a ballot. For all USSA members, please return (postmarked) your survey by October 1, 2013. Candidates bios can be found in this newsletter issue.



#### **DISTRICT 1**

Larry Pauly, Delta, Utah

#### **DISTRICT 2**

Amanda Dobson, Lexington, MO • James Heggemeier, Platte City, MO

#### **DISTRICT 3**

Bill Royer, Washington, IL

#### **DISTRICT 4**

Randy Hodges, North Branch, MI • Bill MacCauley, Atglen, PA

# 2013 USSA DIRECTOR ELECTION

## DISTRICT 1



**LARRY PAULY – DELTA, UT**

Dear Suffolk Enthusiasts,

Let me take a moment to introduce myself. My Name is Larry Pauly, I currently reside in Delta, Utah with my wife Linda. We run 260 head of registered brood ewes. Sheep are the chief source of our income. My involvement in the sheep industry began as a youth in Corvallis, Montana. Below, please review some of the highlights from my past 50 years in the sheep industry.

**Sheep Manager:** My first managerial position was with Cook Ranches in Florence, Montana +3000 head of commercial ewes. Upon the dispersal of the ranch, I too went to the new owners at L2 Incorporated out of Ephrata, Washington, who ran about 8000 head of commercial ewes. I have also managed operations for Farrell Wankier, from 1983 to 1989.

**Marketing:** The commercial sheep breeders are major contributors to the American lamb crop every year. I have been fortunate enough to know several owners of large operations and am proud to sell over 200 rams a year to help satisfy their needs. I received the Top Pen of Suffolks Award twice at the California Ram Sale. I have sold in the top 5% of both the Utah Ram Sale and the Craig Colorado Ram Sale for the past several years and the top selling pen of rams at the Bakersfield Ram Sale, of which I am the Chairman.

**Registered Sheep:** I enjoy raising and breeding sheep but due to the lack of time I am limited as to what I can attend. This year I attended the Nugget All-American in Reno which was the National Show. We had outstanding consignment award over all breeds, the Best Flock, the Best Suffolk Consignment. We also did well in Sedalia.

**Future of the Industry:** My children and Linda's children were actively involved in 4-H and FFA as youth. I currently have the opportunity to assist and mentor my grandchildren in the sheep industry. I am excited that they too have registered Suffolks. I enjoy working with the youth and hope to encourage them to stay involved with sheep.

My goal is to listen to what the members would like to have done. I believe that the board is there for the membership and need to work together to promote and improve the industry.

## DISTRICT 2



**Amanda Dobson – Lexington, MO**

Hello, my name is Amanda Dobson. Many of you have or still do know me as Amanda Bergsieker. I live in rural Lexington, Missouri with my husband, Kyle. For the past three years, I have been serving you as your District 2 director. Currently, I have 25 Suffolk brood ewes and 20 Tunis brood ewes. For the past 12 years, my summers have been spent traveling the show circuit with my Suffolk sheep. As your director, I have been able to meet many of you and really enjoy getting your opinions on current Suffolk topics.

I am the current Missouri Suffolk Sheep Association's President. Over the past couple years since I have become President; the Missouri Suffolk members have been working hard to continue to raise money and support the state Suffolk exhibitors at the Missouri State Fair. Just this past year we were able to get enough support to add 3 slick sheared classes to the open Suffolk show. As a state organization, we would like to support all Suffolk sheep, whether shown slick sheared or fitted.

While serving as your director, I have been active on several committees and active in many events such as: chairwomen of the Hospitality committee (which includes Reno and Sedalia sales), planned and served the food at the "Suffolks Today and Tomorrow" conference held at Sedalia in June 2012, and organized a social event hosted by Ruby Mountain Sheep Company in Louisville. I am currently serving as a chairwoman of the Ambassador committee as well. I am very proud to say that while on the board, I have been present for all but one meeting whether it was a conference call, meeting at Louisville or Sedalia or the 2013 May Board retreat. A goal of the USSA board is to maintain and obtain a unified board of directors, with the understanding that we may not all agree but once a decision is made we stand united as one.

Being on the USSA board has given me an opportunity to serve as a co-coordinator for the UJSSA board of directors. I took

*(Continued on page 21)*

## 2013 USSA DIRECTOR ELECTION

(Continued from page 20)

on this position knowing that I had big shoes to fill after the retirement of Andy Asberry and Donna Mays. After just completing our first junior show as coordinator, I feel great about my decision and look forward to the years to come. This year we had a number of applicants apply for a director position, which is a wonderful feeling knowing that these juniors want to be active and be the future of the Suffolk breed.

I have decided to run for District 2 director again, I would like to continue our work on the board to make the Suffolk sheep a more “functional” sheep as a loss for a better term in order to increase the longevity and structural correctness of the breed. The Suffolks are a breed that we can currently cater to others due to the fact we have wether type, “tweeners”, and frame sheep, we have it all! We may not be the breed in the lead anymore but that is not a goal that needs to get out of reach, if each of us as a Suffolk member recruits one to two members a year or even register a couple more sheep we can obtain this once again! WE are the one and only breed that has a junior show that is ran by its juniors, we need to be promoting that! After attending this year’s National Junior show (that was held at the same location as the All-American), I am incredibly proud of our breed and humbled to see the amount of entries and large list of sponsors that we were represented with when comparing our single breed show to the other that which hosts multiple breeds. So I truly want to say thank you to each of our great breeders and supporters!

As you finish analyzing all of your choices for directorships, please keep in mind my record, drive and passion for this association. I would love to serve you for another term as your District 2 USSA Director. As always, feel free to contact me via your preferred method at anytime to discuss any questions, concerns, or ideas you may have. Thank you and hope to see you soon at a future Suffolk event!

Thank you.

Amanda Dobson



### **James Heggemeier – Platte City, MO**

After 57 years of raising Suffolks, showing and selling them from coast to coast, I decided to sell them in 2011. It was a difficult decision to make but I knew it was time for Jody and I to take some time for ourselves and to take care of some medical issues we had been putting off. After having eye surgery and complete medical examinations we discovered we were in better shape than we thought. So we set out to help some of the friends and customers that had supported us for so many years. It was a real joy to be able to give back to those who had been so loyal to us, but we realized that there were a lot of people who loved their sheep but just weren’t capable of doing the physical work anymore. There were eager to expand and excited to see their sheep in competition.

Eleven and half months after selling our sheep I was back in the business again, even though only in a small way. I discovered I still loved working with the good ones and all the joys that go with it. After driving the school bus it was a welcome relaxation to come home and be a shepherd.

The most important thing I realized from talking to so many Suffolk breeders is that they want to raise, sell and show the type they like, not being told by our board how they had to present them in show or sale. When I previously served on your Suffolk Association board I was a great supporter of the slick sheared classes. I also pushed hard to include DNA testing on the sale order line-up sheets. While I was a great supporter of our past breed secretary Annette Benson, I also am quite proud of the job our new secretary Amanda Everts is doing. I am running for the board with the hope that my many years of raising sheep in several different climates and for a variety of different markets and clients will help me to guide our association into the future. I do believe that our breeders need our support to breed, show and sell the type of Suffolks that they love!

Thanks for your consideration and make your feelings heard.

James Heggemeier

# 2013 USSA DIRECTOR ELECTION

## DISTRICT 3



**Bill Royer, Washington, IL**

My name is Bill Royer and I am running for a USSA Director position representing District 3. I believe I bring several qualifications to this position. My family and I have been raising Suffolk sheep for more than 30 years. Our family's true love has been the involvement in youth programs, including the UJSSA. We are literally counting the few short years until grand children will be involved in UJSSA activities!

As a Board member, I will represent the complete Suffolk industry. We have sold numerous range rams over the years and have great respect for the Suffolk breed being the best of terminal sires. Our passion for the breed also extends to my son's family, which is very involved in providing select lamb to several farmers markets in Indiana.

Currently, I am serving as President of the Illinois Suffolk Association. It is through this organization that my wife and I were instrumental in starting the Illinois Jr. Suffolk Show more than 20 years ago. It is also through the juniors that I take much pride in breeding and selling quality Suffolk sheep. My family and I want to be able to create memorable experiences for these juniors through 4-H, FFA and junior shows at the county, state and national level. These memories and experiences are what we need to continue the breed's success and continue to grow the number of Suffolk breeders in the country.

I am currently retired from management in a large manufacturing company. With this career background and my personal experience of more than 30 years, I would bring my ability to work together as a team on this board and to ultimately make our USSA and the Suffolk breed the best it can be!

Thank you.

Bill Royer

## DISTRICT 4



**Randy Hodges – North Branch, MI**

I am the owner of R&R Suffolks located in the thumb area of Michigan. I have raised Suffolk sheep for over 50 years, starting with a 4-H project in southeastern Nebraska. I am currently president of the Michigan Suffolk Breeders Association, and past-director and vice-president of the USSA board. I have served as sheep superintendent at our county fair and have judged open and junior classes at several county fairs.

The USSA is a great resource for Suffolk breeders. I do think that we need to work harder at promoting Suffolks as sires of fast growing market lambs with a lean and desirable carcass. No other breed can beat a Suffolk ewe in lamb production a fact that sometimes gets lost when attention is given only to show ring results. I believe that a board we need to promote more aggressively the production type sheep that sell in the NSIP sale. Production data combined with the beautiful breed characteristics of the Suffolk will go a long way in convincing commercial breeders of the economic value of the breed.

I also think that support of junior breeders is vital to the future of the industry. We can do this by continuing to support the ewe lambs futurity and the USSA junior shows at the both the regional and national levels.

As a director, I will push for the board to promote the breed as serving many purposes capitalizing on the beauty and productivity of the breed. I don't believe we should let the show ring dictate what we are doing as a breed and get back to promoting the 3-dimensional sheep that the commercial industry demands. We don't need different breed standards for different types of sheep; instead we need to make sure judges of Suffolks are versed in our current breed standards.

I believe that I have a range of experiences with the Suffolk breed in both the commercial and purebred settings that qualify me to represent the variety of Suffolk breeders within the district. When I was director previously, I took my responsibilities seriously. I never missed a conference call or face-to-face board meeting in the three years I was on the board. Please feel free to contact me if you have any concerns you would like to discuss with me before you cast your ballot.

Randy Hodges, 810-441-6218, hodesrk@yahoo.com

## 2013 USSA DIRECTOR ELECTION



**Bill MacCauley – Atglen, PA**

Bill MacCauley from MacCauley Suffolks, resides in Atglen, PA with his family: Betsy, Chris, and Kyle. The flock consists of ~300 purebred Suffolk Ewes and 100 crossbred ewes used primarily as recipient ewes for the ET program. The entire program emphasizes easy keeping trouble free sheep that will work in any situation.

Every year Bill is a strong supporter of the Junior Association and Junior Show because the youth are the future of the breed. Bill and Betsy were the recipients of the 2013 Junior Advocate Award from the UJSSA.

Bill is invested in the future of the Suffolk Breed and is fully committed to returning the Suffolks to the powerhouse breed it was.



## United Suffolk Sheep Association

### ANNUAL MEETING & DINNER

Tuesday, November 19, 2013

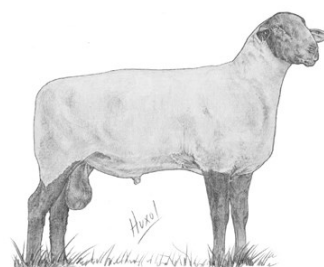
6:30 pm

North American International Livestock Exposition, Louisville, Kentucky

(Please stop by the USSA booth for room details)

*You're invited to join fellow United Suffolk Sheep Association Members for an event filled evening of dining and reminiscing as the association recognizes the inaugural class of inductees to the United Suffolk Sheep Association Hall of Fame. An annual business meeting will follow. We hope to see you there!*

*A Kentucky BBQ Meal will served which includes salad, coleslaw, baked beans, cheesy hashbrown casserole, biscuits, corn on the cob, boneless pork ribs, chicken, beef brisket and dessert. A cash bar will be open throughout the evening. Tickets are \$32 per person.*



## Reservation Form

The United Suffolk Sheep Association requests members submit a reservation for this event. Please complete the reservation form below and return by **October 1, 2013**. Reservations and payment can be mailed to: USSA, PO Box 995, Ottumwa, IA 52501. If you do not plan to attend, a reservation form does not need to be returned.

I, \_\_\_\_\_ plan to attend the 2013 USSA Annual Meeting & Dinner on Tuesday, November 19<sup>th</sup>, 2013. There will be a total of \_\_\_\_\_ guests with my party and I have enclosed a payment of \_\_\_\_\_ (\$32.00 per attendee).

# CLASSIFIED ADS

*USSA Members only. Ads are free. Must be sheep related: animals, vehicles, trailers, equipment, transportation, working dogs, etc. Include your contact information. Email you ad to: [news@u-s-s-a.org](mailto:news@u-s-s-a.org). The newsletter may not contain all of the classified ads or include photos that are posted with the classified ad. To find a full listing, please visit our website: [www.u-s-s-a.org](http://www.u-s-s-a.org).*

## **Rams For Sale**

2013 spring born ram lambs for sale.

For More Information: Bob Kimm, Kimm Suffolks, [bbkimm@fctc.coop](mailto:bbkimm@fctc.coop), 319-290-8997,

<http://breedingsheepage.com/kimm/>

## **Registered Suffolk Rams & Ewe Lambs For Sale**

Registered Suffolk Ram Lambs, RR and ready for fall breeding. February born Ram lambs sire by Double Lucky (Ruby Mountain 1217) with Corson and Lansing on the dam side. These are fast growing, structurally correct with lots of loin length. Will make excellent terminal sire for the commercial breeder and are competitive in the show ring at county and state fair.

We also have 8 ewe lambs for sale. These will make good brood ewes with good mothering ability.

For More Information: Stewart Family Suffolks, Newton, IA, (641) 792-2323, Cell (641) 521-7981, [rstewart@pcpartner.net](mailto:rstewart@pcpartner.net)

## **Proven Ewes For Sale**

In the battle to maintain a manageable flock size, we are offering 13 ewes (ages 2-4 years) for sale. These stud ewes are in great condition and ready to produce for you. Wonderful bloodlines represented here with a history of producing sound offspring.

For More Information: For more information, visit [www.martenssuffolks.webs.com](http://www.martenssuffolks.webs.com) or contact Carl Martens at 507-380-1828 or [martenssuffolks@comcast.net](mailto:martenssuffolks@comcast.net).

## **Suffolk Rams For Sale**

We are offering for your consideration the following rams:

An outstanding yearling ram sired by Ulrich 52 who is a son of the great Kimm 7012. This ram has it all together: beautiful head, great bone, thick topped and very correct.

Perhaps you may like a 3 year old ram that we purchased from Tom Slack. He is a typical Slack sheep: nice profile, good rear leg and very straight in his lines.

If you would prefer a ram lamb we have several to choose from. These are all beautiful headed, good bone, very correct with a good amount of meat.

Rather than give you more detail, you can go to [ulrichsheep.com](http://ulrichsheep.com) for pictures of all the above animals and see for yourself.

We also have a nice selection of ewe lambs with Kimm, Chapman, MacCauley and our own bloodlines. These are priced at \$300-\$500.

For More Information: Ulrich Suffolks 1310 C. R. 1300E Eureka, IL 61530 309-467-4707

## **Ewes For Sale**

9 ewes for sale. Mostly 1 to 4 years old. Ewes are "ASAP" breeding.

For More Information: Eddie Murphy 502-693-0154

(Continued on page 25)

**IS THERE SOMETHING YOU WOULD LIKE TO SEE IN THE NEWSLETTER?**

EMAIL THE USSA OFFICE: [news@u-s-s-a.org](mailto:news@u-s-s-a.org)

# CLASSIFIED ADS

(Continued from page 24)

## **Reg Suffolk Ewe Lambs For Sale**

RRNN From a 9 year certified scrapie free herd. All are February born and raised as, twins or triplets. A lot of style, depth and correctness. VanArkel on the dam side, and Dreher-Luxford on the sire side. Bred to be productive, easy keeping sheep, like they were meant to be. Can be shown fitted or slick shorn.

For More Information: Belle Haven Farm,, Craig Feters Lucas, 641-414-1979, feters\_1963@yahoo.com

## **Two Yearling Rams For Sale**

For sale: two yearling rams. 0112, 42 inches tall, 40 inches long, wide top. 2012, 41 inches tall 41 inches long, Champion Suffolk ram at the Ozark Empire Fair, Champion 4-H Suffolk Ram at the Missouri State Fair. Both rams sired by Quam 942 RR/NN.

For More Information: Pat Gorsett, Home: (660) 542-2404, Cell : (660) 542-4543

## **Flock Reduction**

50 –70 registered Suffolk ewes for sale. Solid, big framed, well bred ewes with over 50 years of selective breeding. Bloodlines include: Donner Trail, Lost River, Gamble and Dreher.

Several yearlings and 2 year olds will be offered as well. Ewes are open and ready for fall breeding.

Yearlings and 2 year olds \$200, 3 year olds and up \$150. No culls.

For More Information: Milt Russell, Russell Family Farm, Prosser, Washington, (509)973-3199

## **2 Registered February Ram Lambs**

2 registered February ram lambs for sale, RR/NN. Will sell individually or together. \$400 each.

For More Information: ATA Suffolks, Jerry Caven, Vernon Center, MN, (507)-549-3122

## **High Country Farm LLC**

1 Registered Ram (many Junior From the Bunker Hill blood line) 1 Registered Ram (big mountain Jr. From the Big Mountain blood line won grand champion of the Nevada gold nugget) 1 club Ram yearling \$150 1 95' Flat bed semi trailer for sale \$5,000 1 03' Kenworth semi tractor truck for sale 1 00' Freightliner semi tractor truck for sale And semi truck tires call for sizes \$60.00 each

For More Information: Call for more info (307) 747-6100 Email: fass15@hotmail.com

## **Ewe Lambs For Sale**

Ewe lambs for sale: A select group of Suffolk ewe lambs that are bred for meat and productivity are for sale by Russell Sheep Company.

There are pictures posted on the website: [www.russellsheepcompany.com](http://www.russellsheepcompany.com) under the for sale tab. If you saw us show at the Jr. Show in Michigan – you know the kind of impressive sheep these are.

For More Information: Contact us at 765-288-4845, or email [farmer1224@hughes.net](mailto:farmer1224@hughes.net) for more information. Jeremy, Paul, and Diane Russell, Russell Sheep Company.

## **Two Registered Ram Lambs For Sale**

Koch Suffolks from Waterloo, Illinois have two ram lambs for sale. The sire is RRNN from Bob Kimm Genetics back to grand sire is MacCauley Suffolks 2010.

Fitted ram lots of style out of one of our best two ewes (K137). We wish we could utilize him for breeding ourselves, but would be related to too many ewes at this time. \$450. Slick sheared ram is very thick and tons of bone. \$400.

For More Information: Please contact my e-mail if interested at [rakmpm@gmail.com](mailto:rakmpm@gmail.com)

# Calendar of Events

**Have a Suffolk related event you would like to add to the calendar of events?** Email your event to: [news@u-s-s-a.org](mailto:news@u-s-s-a.org). Event flyers, show rules and entry forms can be found on the USSA website event page. The newsletter may not contain all upcoming events. To find a full listing, please visit : [www.u-s-s-a.org](http://www.u-s-s-a.org) or [www.ujssa.org](http://www.ujssa.org).

## October

- 5 Craig Ram Sale, Craig, CO
- 10 Utah Ram Sale, Spanish Fork, UT 9:30am [website](#)

## November

- 16 NAILE Jr. Market Lamb Show\*, Louisville, KY
- 16 UJSSA Meeting, 6pm, NAILE, Louisville, KY
- 17 NAILE Jr. Breeding Sheep Show\*, Louisville, KY
- 18 USSA Board Meetings, NAILE, Louisville, KY
- 19 USSA Annual Meeting & Dinner, 6:30pm NAILE, Louisville, KY
- 20 NAILE Open Suffolk Show\*, Louisville, KY

\* All NAILE Shows and event information can be found by visiting: [www.livestockexpo.org](http://www.livestockexpo.org)



Some of the many scenes of the 2013 Junior Show!

## 2013 NSIP SUFFOLK ELITE & PERCENTILE REPORTS

To view [click here](#) or visit [www.nsip.org](http://www.nsip.org) and select elite/siresum than USA Terminal!

## United Suffolk Sheep Association

PO Box 995  
Ottumwa, IA 52501

Phone: 641.684.5291

Fax: 641.682.9449

E-mail: [info@u-s-s-a.org](mailto:info@u-s-s-a.org)



We're on the Web!

[www.u-s-s-a.org](http://www.u-s-s-a.org)

[www.ussa.oreg](http://www.ussa.oreg)

## Suffolk Scenes



## Sheep Resources

The USSA Office often gets phone calls asking for resources producers can go to for sheep-related questions. The following are resources the office is aware of for producers to use. Since this may not be a complete list, if there are additional resources that you use and would like to share please email those to [news@u-s-s-a.org](mailto:news@u-s-s-a.org).

### New Sheep Producer Resource Website

Sheep Community of Practice is a new web-based tool available to sheep producers through the eXtension Foundation, a non-profit entity. This website offers a Ask the Expert Tool that will connect you with experts and allow you to ask questions. Through the Ask the Expert Tool, the producer can even attach images. The website also offers information about sheep feeding and nutrition, reproduction and breeding, management practices, genetic selection, health and veterinary care, grazing and pasture, and wool. To visit the Sheep Community of Practice website go to: <http://www.extension.org/sheep>

### Ask a Sheep Vet

This website is a blog written by sheep veterinarian Dr. Kennedy of Pipestone Veterinary Clinic, Pipestone, MN. The blog contains answers to various sheep related questions, with new information added often. To visit Dr. Kennedy's blog please go to: <http://askavetsheep.wordpress.com/> Also, if you "LIKE" [Pipestone Vet Sheep-Goats](#) on Facebook, are several question and answers posted daily.

### A Guide to All Things Sheep©

A Guide to All Things Sheep© is a new resource for sheep breeders and producers by Premier 1 that offers information on several topics from educational guides, how to's, photos, recipes, an events calendar, view points and industry spotlights. To visit A Guide to All Things Sheep© please visit: [www.premier1supplies.com/sheep-guide/](http://www.premier1supplies.com/sheep-guide/)

Check out the USSA Facebook page!

