

# The Suffolk Newsletter

## United Suffolk Sheep Association

### President's Message

I hope everyone is enjoying the fall weather. Here in Pennsylvania we can't seem to catch a break from the rain. We had the least amount of rain on record for the month of July and now have set new records for both August and September.

I am pleased to report the board had a very successful and productive conference call in September and we are motivated more than ever to give you the most value and service you deserve. One topic that has come up is the issue of Slick Shearing Suffolks at our shows and sales. The board received a letter from a concerned member who has noticed a decline in the number of Suffolks being shown in their district versus Southdowns and Shropshires.

This is obviously a topic about which many feel strongly. Your board has an obligation to adopt policies that promote and encourage the growth of our breed. Our discussions at Louisville should include ideas from our membership about how to attract new Suffolk enthusiasts. We should discuss how we can collectively promote slick shearing, while not alienating those that wish to keep exhibiting fitted sheep.

Since the conference call all of us have heard from a lot of members who are not in favor of a drastic change and want to see us take a gentle step towards this idea. I can tell you that the board is committed to doing what is in the best interest of our great breed.

We have no interest in dividing up our membership or drawing a line in the sand; however, there is a large concern about the lack of junior kids getting into the Suffolk breed. It has been pointed out by many that we should look at the dramatic growth of some breeds and encourage similar policies.

Being your President, I have the privilege to hear from members on both sides of this issue. It is my job to try to remain neutral and pose questions to stimulate ideas. The bottom line is that we need to attract junior kids and we need to do whatever it takes to accomplish this goal. No one wants Suffolks to be shown in AOB-meat classes, or to see our numbers continue to drop. But we also can't take the ostrich approach and just hope that things will improve without some changes.

I am always hopeful for a large turnout at our board meeting and I would like to ask every member to come with an open mind, be objective and most importantly, contribute in a positive spirit. I would ask that anyone opposed to increased promotion of slick shearing please bring fresh new ideas how we can attract new members and grow our breed. In today's world it is very easy to sit on the sidelines and tell everyone what won't work to succeed. It takes creative people to think outside the box. If we work at this together we will continue to move our breed forward.

Bill MacCauley

October 2011

Volume 1, Issue 2

### Inside this issue:

UJSSA Information	3
2011 NAILE Information	4
Futurity	5
Question and Answer	5
End of an Era, the Beginning of a New One	6
USSA & UJSSA Member News	8
Calendar of Events	9
Classified Ads	11



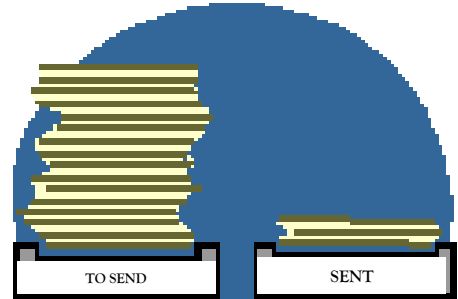
**DON'T FORGET TO MAIL THE OFFICE YOUR \$5 ENTRY FEE FOR THE NAILE OPEN SHOW.**

# Don't forget about the Amnesty Program!

The 2011 Amnesty Program includes *late transfers* as well as *late registrations*. Transfers over 60 days and registrations for sheep over 1 year of age are \$6.00/head. If you know of an individual that would like to join the association or has not been active within in the last few years, now is a great time to get flocks current! I have had several phone calls from members who are encouraged the amnesty program is back again this year because they did not take advantage of it last year. *I encourage current USSA members and prospective members to take advantage of the Amnesty Program!*

**Do not forget to submit your amnesty registrations and/or transfers by December 31, 2011.**

The USSA congratulates Shirley Volkman (Volkman Valley Ranch) of Livermore, CA who now has a completely registered Suffolk flock due to the amnesty program. If you're a member that needs a little motivation to update the status of your flock, Shirley took on a huge project, registering over 200 head dating as far back as 1989!



## 2011 USSA Annual Meeting

### Annual Meeting

**Monday, Nov. 14 @ 6:30pm**

**NAILE in Louisville, KY**

Members are encouraged to attend the 2011 United Suffolk Sheep Association Annual Meeting held at NAILE in Louisville, Kentucky on Monday, November 14th at 6:30 pm. For meeting location, please stop by the USSA booth in Louisville for further details.



## USSA Scholarship

The United Suffolk Sheep Association is offering two \$1,000 Scholarships for graduating high school seniors or students enrolled at a college or university. We encourage all eligible young breeders to join the competition. Funds will be paid directly to the winner's college or university and may be used for academic pursuits only. To qualify an entrant must:

1. Complete an application form which is available from the USSA Office or USSA website
2. Submit two letters of



recommendation from teachers/professors, counselors or community leaders

3. A current transcript of scholastic credits

Finalists will be selected from the applications received. Finalists will be interviewed by the Scholarship Committee at the North American International Livestock Exposition (NAILE) held in Louisville, KY. Finalists in attendance to NAILE should check the USSA Display Table for an interview date and schedule.

Applicants not able to attend interviews in person will be interviewed via the telephone. The scholarship winners will be announced at the USSA Annual Meeting held in Louisville, KY.

Applications must be received by the office no later than **November 1, 2011**. Winners will be selected entirely based on merit.

**PLEASE NOTE DEADLINE DATE CHANGE!**

# UJSSA Board of Directors

## Officers

**President:** Taylor Peck, 908-328-4053, peck676@yahoo.com  
**Vice President:** Katie Powers, 302-632-3079, sheepgrl22@yahoo.com  
**Secretary:** Elizabeth Niedziela, 413-585-9158, niedzielae@gmail.com  
**Treasurer:** Rachel Schambow, 608-774-6765, highpt@hughes.net

## Ambassador

**Tom Schambow**, 608-201-6068, tschambo@uwoy.edu

## Directors

**Kyle Baubonis**, 207-785-2978, guiairidge@gmail.com  
**Connor Vincent**, 302-858-2841, whatamelon@bwave.com, loveskat2@aol.com  
**Taylor Wolff**, 701-783-4514, wolff\_taylor@hotmail.com  
**Chris MacCauley**, 610-593-2907, 484-319-8376, cmac.sheep@yahoo.com  
**Codee Gilbertson**, 701-833-6754, 22and5@gmail.com

## Intern

**Makayla Johnson**, 920-878-0157, makayla\_johnson@hotmail.com  
**Faith Galford**, 304-992-1256, faithgalford@yahoo.com

## Junior Coordinators

**Andy Asberry**, Home: 817-558-3932, Cell: 817-366-6366, AAsberry@aol.com  
**Donna Mays**, 208-767-3405, lostriverdm@yahoo.com

## Message from the UJSSA President

Hi Suffolk Juniors!

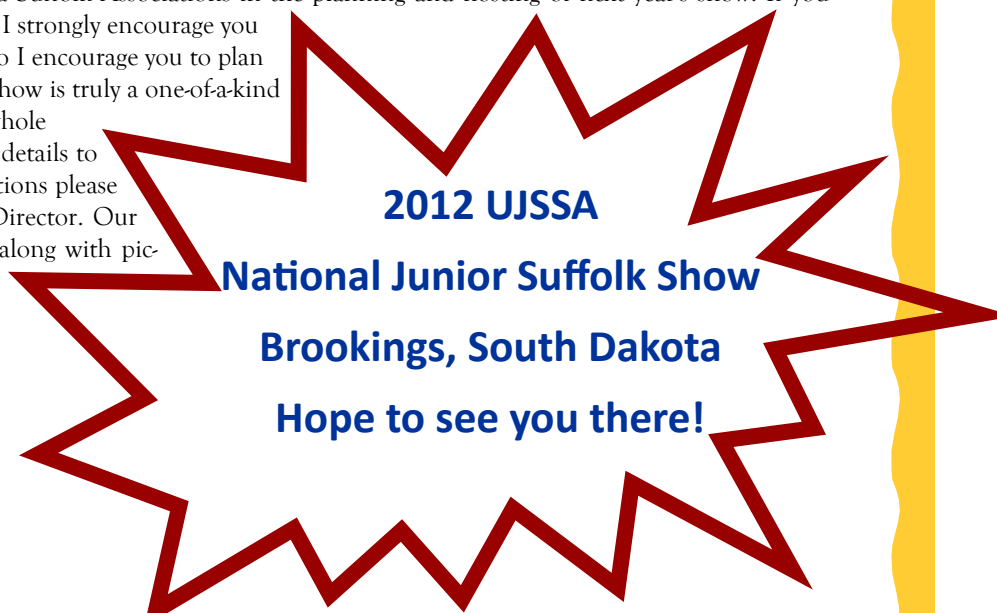
Hope you are pleased with your fall lamb crop! If you are fortunate enough to have fall lambs that is.... Summer is definitely over in State College, and the walks to class have been chilly! If you're anything like me~ you're looking forward to the fall shows, especially Louisville!!

NAILE: The Junior Board would like to invite all Suffolk juniors to a Jr. Social this year on Saturday at 12pm. We will get together somewhere in the barn-listen for announcements! We are currently selling raffle tickets for a cash raffle to be drawn in Louisville after the Suffolk Open Show. Please see a junior director if interested! We are also hoping to get a lamb donated for the Suffolk Sale, please let a director know if you would like to help!! Our Silent Auction will also be displayed at the Suffolk booth. When you get a chance, please stop by and place a bid on your favorite basket.

The 2012 National Jr. Suffolk Show will be held in Brookings, SD at South Dakota State University. We are especially excited to work with the South Dakota and Minnesota Suffolk Associations in the planning and hosting of next year's show. If you have never been to a National Jr. Suffolk show, I strongly encourage you to consider. Our junior shows are very special so I encourage you to plan now for next 4th of July. Our National Junior show is truly a one-of-a-kind event. It is a fun filled weekend suited for the whole family, not just Exhibitors! There will be more details to come as we get closer, but if you have any questions please don't forget that you can contact any Junior Director. Our contact information is on the junior website, along with pictures from past shows.

I look forward to seeing many of you soon!

Taylor Peck,  
President



2011

## NORTH AMERICAN INTERNATIONAL LIVESTOCK EXPOSITION

### USSA Calendar of Events for NAILE

#### Wednesday, November 9 -

Open Show Arrival (Until Nov. 11, 6pm)  
Junior Show Arrival (Until Nov. 11, Noon)

#### Friday, November 11 -

Lead Line at 1pm  
Market Lamb and Jr. Breeding Showmanship at 5pm

#### Saturday, November 12 -

Jr. Wether Show at 8am  
Suffolk Sale at 3:30pm  
UJSSA Board Meeting at 6pm  
USSA Board Meetings - immediately following  
UJSSA meeting

#### Sunday, November 13 -

Junior Show - Ring 1 (North) following Dorsets

#### Monday, November 14 -

USSA Annual Meeting at 6:30pm

#### Tuesday, November 15 -

Open Suffolk Show at 8am

#### Friday, November 18 -

Suffolks Released at 3pm

### Judges for NAILE Suffolk Shows

Junior Wether Show – Scott Greiner, Christiansburg, VA  
Junior Breeding Show—Rob Zelinsky, Brookings, SD  
Open Show— Slick: Larry Mrozinski, San Pierre, IN  
Fitted: Tor Sorenson, Tucson, AZ

### Open Show Entry Fees

#### NAILE Open Show Participants -

Just a reminder that the entry fee of \$5 per head needs to be paid to the USSA prior to the events at NAILE, for those who do not pay, will be prohibited from participating. If the entry fee is collected at NAILE, the entry fee will increase to \$10 per head.

### NAILE Market Lamb Show – Suffolk Division

Again this year, but a little revised, the USSA will be providing special monies to UJSSA members showing Suffolk market lambs at the 2011 NAILE Market Lamb Show.

The USSA will award \$1000 to the Champion Suffolk Market Lamb, \$500 to the Reserve Champion Market Lamb, and within each Suffolk Market Lamb Class, \$50 for 1<sup>st</sup> place and \$25 for 2<sup>nd</sup> place. To be eli-

gible for this prize money, each Suffolk market lamb, at the time of weigh-in and classification, will be required to have a Suffolk Market Lamb Certificate. Certificates may be obtained from the USSA office (P.O. Box 995, Ottumwa, IA 52501) or at the time of classification.

This award money will only be available to individuals whom:

- (1) Pay for a United Junior Suffolk Sheep Association (UJSSA) Membership at the rate of \$15 or are a current UJSSA member

AND

- (2) Purchase a wether certificate from the USSA at the rate of \$10 per lamb.



# Futurity Points

## District 1

No futurity point records have been received in the USSA Office.

## District 2

Riggen Zelinsky (SD) - Kimm 11089 (23pts)  
Rhett Zelinsky (SD) - Kimm 11039 (9pts)  
Alison Heitz (TX) - Baumgartner 1184 (9pts)  
Raesa Zelinsky (SD) - Kimm 11050 (8pts)

## District 3

Molly Jo Woods (IL) - Lyn Lee 11026 (85pts)  
Cole Damman (IA) - MacCauley 2391 (34pts)  
Cody Damman (IA) - Lyn Lee 11024 (31pts)  
Katherine Newhouse (IA) - Damman 11-212 (15pts)

## District 4

Ashley Gouge (DE) - Flying G 2102 (26pts)  
Marissa Bilyeu (PA) - Quam 982 RRNN (19pts)  
Kyle Baubonis (ME) - Lyn Lee 11057 (8pts)  
Kyle Baubonis (ME) - Quam 1030 RRNN (8pts)

**Futurity Point Record Forms**  
Don't forget to send your Futurity Point  
Record Forms to the office.

## Question & Answer

**Question #1:** When do I have to pay my 2012 Membership Dues in order to get the reduced price and to be included in the 2012 USSA Directory?

**Answer #1:** Early dues are due in the office March 1st in order to take advantage of the reduced price of \$35. This will also ensure that your information will be included in the 2012 USSA Directory. Any dues paid after March 1st will be \$50 and these members will not be included in the 2012 USSA Directory.

**Question #2:** What are flock copies and how much do they cost?

**Answer #2:** Flock copies are double sided papers printed in the office. The front side looks similar to the Registration Certificate and contains all of the same information. The back side has an area at the top to track if you sell the sheep and at the bottom an area for lambing records. These are usually used more for ewes, but sometimes people use them for their rams as well. Flock copies are a paper you can receive in addition to the Registration Certificate. Flock copies cost \$1/sheep.

## End of an Era, the Beginning of a New One

On August 8<sup>th</sup> and 9<sup>th</sup>, 2011 I had a unique once in a lifetime opportunity. That prospect was the closing of the former United Suffolk Sheep Association office in Newton, Utah. Although the office has been officially transferred to its new location in Ottumwa, Iowa, there was still a pulse in the old office. The computer, which had been transported from the National Suffolk Sheep Association office in Columbia, Missouri at the end of 1999, was/is operating and registering Suffolks for all of us. A new computer and software package may be in operation in Iowa by the time you read this.

Annette Benson, the retiring U.S.S.A. secretary, met us at the old office on the morning of the 8<sup>th</sup>. The “us” was a crew that eventually numbered 4  $\frac{3}{4}$  (ask Amanda and Andrew about the fraction). I have to describe us as motley crew, to say the least, but my office closing compatriots may not label us so glowingly. Amanda Everts, the recently hired U.S.S.A. secretary, and her husband Andrew had flown in from Iowa; via Salt Lake City (the Newton International Airport was unavailable). Larry Pauly, one of the U.S.S.A. directors from the west, drove up from south of Spanish Fork, Utah. I cruised in from Central California. Our job, finish the job that Annette and her staff had started.

Annette had already done a tremendous amount of work, as you were greeted by stacks of boxes ready for shipping, when you entered the old office. But, piles of pictures, office supplies, records, publications, you name it were on desks and in nooks and crannies everywhere. There was still much to do. Each of us took on a task and went to work.

For me, there was over 80 years of history emendating from all of this material. The energy that occurred during the formative years of the Suffolk breed to the unprecedented growth years of the 70's and 80's and on to the present was still in evidence. The cliché of history repeating itself means that the positive events of the past need to be preserved for study and analysis in order to apply them to the present as the need arises. This activity to safeguard the legacy of the Suffolk breed is one important element that should be utilized to understand where the breed came from, how it grew and became so strongly popular, and where it is today. The Suffolk breed needs to rediscover itself.

We sorted; reminisced, discarded, reminisced, boxed and labeled, reminisced, palletized, shrink wrapped and finally did wrap up reminiscing prior to shipping. Eventually a truck arrived, and with the help of borrowed fork lift, four pallets containing 69 boxes were loaded and departed to Texas Tech University in Lubbock, Texas. Texas Tech will become the repository for the archives of the Suffolk breed.

All civilizations and their components that make up society undergo change. Some changes occur with almost extraordinary speed, while other circumstances ebb and flow slowly over time. Obviously “Suffolkdom” has changed. Our organizational change has been a slow progression: an initial association in the West, a second association in the Midwest, numerous attempts to merge, finally unification in 1999, and now a movement from the West back to the Midwest. Change is inevitable, even though sometimes hard to acknowledge. I very much appreciate what past leaders and staff have done for the Suffolk breed and its member organization. I likewise eagerly support changes the Suffolk association is undergoing and look forward toward assisting in making history repeat itself so that there is no doubt or discussion as to the breed in the lead.



*(Continued on page 7)*

(Continued from page 6)

It is vitally important for Suffolk breeders to continue to strongly support the United Suffolk Sheep Association. Here are my ten suggestions on how one may so do:

- Maintain Association membership.
- Continue to be seed stock producers by registering Suffolks.
- Encourage youth to raise and exhibit Suffolk breeding stock.
- Elect directors who are committed to the Suffolk breed and who will remain actively involved during their terms.
- Take advantage of the 2011 fee amnesty programs for registering and transferring Suffolks.
- Attend and participate in shows and sales with practical, in demand Suffolks. This also enables one to see what other breeds and types of sheep are doing.
- Modernize your Suffolk promotion program with internet breeder listing and/or a web site.
- Make your Suffolk breeding program better by having an ideal type of sheep you are striving for and never selling your best females.
- Remember that Suffolks are a meat breed; strive to make your Suffolks unique by producing show ring winning and commercially acceptable meat animals.
- Produce Suffolk sheep/lambs that look like Suffolks that win supreme championships over all other breeds

Thank you for the opportunity to be involved with the Suffolk breed, and thank you Annette!

Ron Alves

## Current USSA Board of Directors

### Officers

#### **President:**

Bill MacCauley (District 4)  
Home: 610-593-2907  
Cell: 610-256-1608  
billmac@johnrock.com  
(Exp. 2013)

#### **Vice President:**

Donna Mays (District 1)  
208-767-3405  
lostriverdm@yahoo.com  
(Exp. 2011)

#### **Treasurer:**

Richard Schambow (District 3)  
Home: 608-743-1473  
Cell: 608-774-6068,  
highpt@hughes.net  
(Exp. 2011)

### District 1

**Jake Falleston** (Exp. 2012)  
541-979-0868  
jake101@netscape.com

**Larry Pauly** (Exp. 2013)  
435-864-2777  
l\_pauly@msn.com

### District 2

**William (Bill) Gergen** (Exp. 2012)  
402-540-7884  
wegergen@yahoo.com

**Tom Burke** (Exp. 2011)  
Cell: 816-532-0811  
angushall4@earthlink.net

**Amanda Bergsieker** (Exp. 2013)  
660-232-1433  
ab\_vettech@yahoo.com

### District 3

**Gary Hoskins** (Exp. 2011)  
Home: 515-386-8055  
Cell: 515-370-1353  
hoskinsagsolutions@yahoo.com

**Kim Ketcham** (Exp. 2013)  
Home: 618-656-5388  
Cell: 618-581-3554,  
kimketcham@hotmail.com

### District 4

**Dr. Gerald F. Clair** (Exp. 2012)  
Home: 814-238-1233  
Cell: 814-280-2621  
eclair4076@aol.com

**Andrew Hukowicz** (Exp. 2011)  
413-478-5774  
hukowicza@helenachemical.com

## USSA Member News

Our condolences go out to following families:

Jack Haslem from Susanville, CA passed away on Sept. 11, 2011.

Norma Walters from San Miguel, CA passed away on Sept. 8, 2011.

*If you have any news to share, please let the office know so we can include it in our newsletter.*

## UJSSA Member News

Jason Johnstone, a member of the Olney FFA Chapter, received the Sheep Production proficiency award on June 14, at the Illinois FFA Convention. The convention was held June 14-16 at the Prairie Capital Convention Center in Springfield.

The awards are sponsored by the Illinois Foundation FFA and the National FFA Foundation. Johnstone was recognized on stage and received a plaque and \$250 cash award.

Johnstone advanced as a winner at the chapter, section, and district levels. As the state winner, he advances to compete at the National FFA Convention in Indianapolis in October.

Selection of state award winners is based on the student's records of their supervised agricultural experience program as part of their high school agriculture education classes. The proficiency award areas range from traditional production such as beef, crops, and swine to agribusiness areas such as nursery operations, agricultural processing, and agricultural sales.

More than 3,500 FFA members, advisors, parents, and guests participated in the 83<sup>rd</sup> Illinois Association FFA Convention. There are 16,500 members in 301 different FFA chapters in the State of Illinois. The National FFA Organization is a national youth organization preparing students for leadership and careers in the science, business, and technology of agriculture.





# Calendar of Events

- **October 1** - Craig Ram Sale in Craig, CO
- **October 13** - Utah Ram Sale in Spanish Forks, UT
- **November 5-18** - North American International Livestock Exposition (NAILE). For an expanded listing of events, see page 4 of the Newsletter.
- **November 12** - UJSSA Board Meeting @ 6:00pm
- **November 12** - USSA Board Meetings (Old & New) - Immediately following the UJSSA Board Meeting
- **November 14** - USSA Annual Meeting @ 6:00pm
- **December 31** - Last day to take advantage of the Amnesty Program!
- **March 1** - Last day to take advantage of the reduced rate for 2012 Membership Dues and be listed in the 2012 USSA Directory



## Sheep Management Education in the Comfort of Your Own Home

The Pipestone Lamb and Wool Program is a sheep management education/consulting program offered by Minnesota West Community and Technical College located at Pipestone, Minnesota. The purpose of the program is to help sheep producers increase income and profit through the production of quality lamb and wool. To maximize the profit per ewe and realize the full potential of all sheep through use of modern management practices, new technologies and new approaches to marketing of both lamb and wool.

Continuing with providing various delivery methods of educational information, the Pipestone Lamb and Wool Program launched online courses so sheep enthusiasts can keep current in the comfort of their own home or office.

For more information visit the Pipestone Lamb and Wool Program web page [www.pipestonesheep.com](http://www.pipestonesheep.com) or contact one of the Lamb and Wool instructors, Philip Berg, [philip.berg@mnwest.edu](mailto:philip.berg@mnwest.edu) , (507) 825-6799 or Mike Caskey, [mike.caskey@mnwest.edu](mailto:mike.caskey@mnwest.edu), (507) 825-6808. To register for one of the on-line courses contact Sue Lovell (507) 847-7929, [sue.lovell@mnwest.edu](mailto:sue.lovell@mnwest.edu) or register on-line at [www.mnwest.edu/formmail/formdl.htm](http://www.mnwest.edu/formmail/formdl.htm)

## State Suffolk Associations

We would like contact information for all the State Suffolk Associations. If members could please send us the contact information including the website, we would like to put a link on our website to the state associations. Also if the state associations have any news or changes they would like us to include in our newsletter, please send those to us as well.

# Office Notes

## Correction

There was an error in the National Junior Suffolk Show results. The winner of Intermediate Showmanship was Paige Vincent, not Brandon Troy.

## We Want Your Photos!

We would like to feature some photos in each of our newsletters of our members and their Suffolks! Whether you have old or new photos, all are welcome. We would also like to use some member photos for promotional materials. If you would like to submit photos, you can mail them to the office address, P.O. Box 995, Ottumwa, IA 52501, and then we can return them to you after we scan them. You can also email any photos to [news@u-s-s-a.org](mailto:news@u-s-s-a.org). We look forward to seeing all your photos!

## What would you like to see in this publication?

If you have any ideas or items you would like to see in this newsletter, send us your input! Or, if you have any news stories, results, photos you would like to share with the rest of the United Suffolk Sheep Association let us know!

Items you would like to submit to the newsletter can emailed to:  
[news@u-s-s-a.org](mailto:news@u-s-s-a.org)

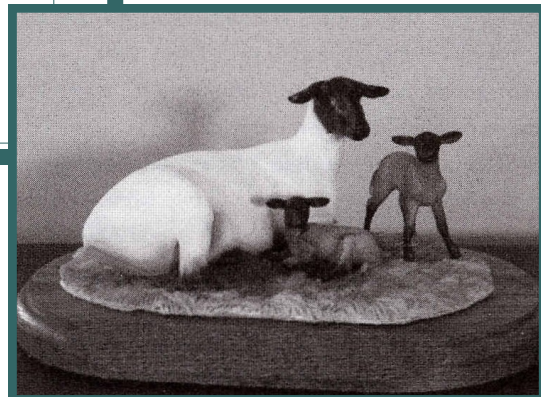


## Website

If you have any information you would like included on our website, please let us know. We also welcome any ideas you may have to improve our website.

**Limited Edition Suffolk Sculptures  
are still available!**

**Contact the office if you are  
interested in purchasing one.**



**United Suffolk Sheep  
Association**

PO Box 995  
Ottumwa, IA 52501

Phone: 641-684-5291

Fax: 641-682-9449

E-mail: [news@u-s-s-a.org](mailto:news@u-s-s-a.org)



"The Breed in the Lead"

We're on the Web!

[www.u-s-s-a.org](http://www.u-s-s-a.org)

# Suffolk Scenes



Submitted by Robert Kimm, Kimm Suffolks, Dysart, Iowa

## Classified Ads

***USSA Members only. Ads are free. Must be sheep related: animals, vehicles, trailers, equipment, transportation, working dogs, etc. Include your contact information. Email you ad to: [news@u-s-s-a.org](mailto:news@u-s-s-a.org). The newsletter may not contain all of the classified ads. To find a full listing, please visit our website: [www.u-s-s-a.org](http://www.u-s-s-a.org).***

### Registered Suffolk Sheep for Sale

**Description:** Offering ewe lambs and rams lambs for sale. Sire by Ruby Mountain ram. All ram lambs are RR and most of the Ewe lambs are RR with a few possible QR. These will be big well structure lambs with good mothering ability. Background genetics include Ruby Mountain on the sire side and Lansing, Nichols, Corson, Catron on the Dam side. Price: \$400 - \$500

For More Information:

Randy and Barb Stewart, Stewart Family Suffolk

4009 Hwy F-36 W, Newton, IA 50208

Home [\(641\) 792-2323](tel:6417922323), Cell [\(641\) 521-7981](tel:6415217981), [rstewart@pcpartner.net](mailto:rstewart@pcpartner.net)



### Registered Suffolk Ram For Sale

**Description:** DOB 1/12/2010. Sire - Slack 7152. Dam - Wiford 779. If you know quality Suffolks you will recognize these names. Wiford 007 has been the game changer for us. He has added length, muscle, and depth. Pictures of him are on our website [www.ONeillsuffolks.com](http://www.ONeillsuffolks.com). Price: Call for details!

For More Information:

O'Neill Suffolks

317-557-0932, 765-737-6660

email: [moneill@hrtc.net](mailto:moneill@hrtc.net), website: [www.oneillsuffolks.com](http://www.oneillsuffolks.com)