

# The Suffolk Newsletter

## United Suffolk Sheep Association

### President's Message

My fellow Suffolk breeders what an exciting time to be in the sheep business and Suffolk breed.

This is our first electronic newsletter and I want to thank Amanda for taking the initiative to get it going. We are doing everything we can to give our members value and up to date information.

In the next week you will be receiving the director ballots and this is your opportunity to have your say in the election. I want to thank all the candidates for taking the time and making the commitment to our association.

This summer we had a very successful junior show in Harrington, Delaware in conjunction with the All American and I want to thank everyone who made it a huge success.

As fall approaches we need to step back and evaluate where we are as a breed and ask ourselves how do we make ourselves better and bring in new members as well as junior members.

I look forward to meeting more of you this fall and making our great breed and association better!!

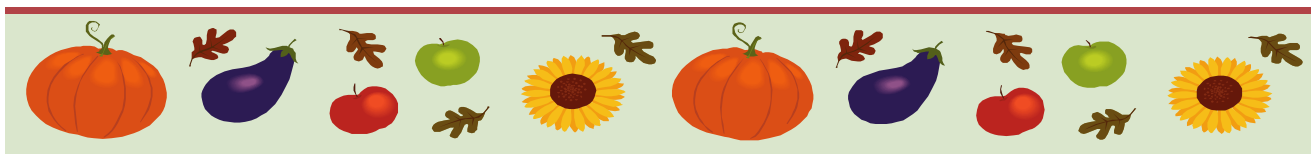
Thanks,  
Bill MacCauley

September 2011

Volume 1, Issue 1

#### Inside this issue:

UJSSA Update	3
District 1 Candidates	4
District 2 and 3 Candidates	5
District 3 Candidates	6
District 4 Candidates	7
2011 Junior Show Results	8
USSA Office Notes	12



### What would you like to see in this publication?

If you have any ideas or items you would like to see in this newsletter, send us your input! Or, if you have any news stories, results, photos you would like to share with the rest of the United Suffolk Sheep Association let us know!

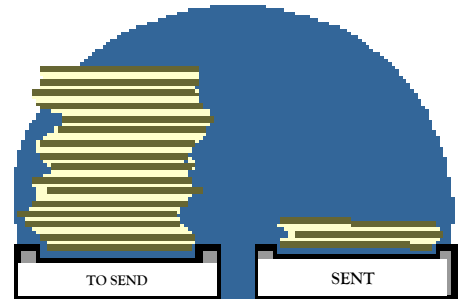
Items you would like to submit to the newsletter can be emailed to: [news@u-s-s-a.org](mailto:news@u-s-s-a.org)

# Don't forget about the Amnesty Program!

The 2011 Amnesty Program includes *late transfers* as well as *late registrations*. Transfers over 60 days and registrations for sheep over 1 year of age are \$6.00/head. If you know of an individual that would like to join the association or has not been active within in the last few years, now is a great time to get flocks current! I have had several phone calls from members who are encouraged the amnesty program is back again this year because they did not take advantage of it last year. *I encourage current USSA members and prospective members to take advantage of the Amnesty Program!*

**Do not forget to submit your amnesty registrations and/or transfers by December 31, 2011.**

The USSA congratulates Shirley Volkman (Volkman Valley Ranch) of Livermore, CA who now has a completely registered Suffolk flock due to the amnesty program. If you're a member that needs a little motivation to update the status of your flock, Shirley took on a huge project, registering over 200 head dating as far back as 1989!



## 2011 USSA Annual Meeting

### Annual Meeting

Monday, Nov. 14 @ 6:30pm

NAILE in Louisville, KY

Members are encouraged to attend the 2011 United Suffolk Sheep Association Annual Meeting held at NAILE in Louisville, Kentucky on Monday, November 14th at 6:30 pm. For meeting location, please stop by the USSA booth in Louisville for further details.



## USSA Scholarship

The United Suffolk Sheep Association is offering two \$1,000 Scholarships for graduating high school seniors or students enrolled at a college or university. We encourage all eligible young breeders to join the competition. Funds will be paid directly to the winner's college or university and may be used for academic pursuits only. To qualify an entrant must:

1. Complete an application form which is availa-

ble from the USSA Office or USSA website  
2. Submit two letters of recommendation from teachers/professors, counselors or community leaders  
3. A current transcript of scholastic credits

Finalists will be selected from the applications received. Finalists will be interviewed by the Scholarship Committee at the North American International Livestock Exposition

(NAILE) held in Louisville, KY. Finalists in attendance to NAILE should check the USSA Display Table for an interview date and schedule. Applicants not able to attend interviews in person will be interviewed via the telephone. The scholarship winners will be announced at the USSA Annual Meeting held in Louisville, KY.

Applications must be received by the office no later than October 3, 2011. Winners will be selected entirely based on merit.



# UJSSA Board of Directors

## Officers

**President:** Taylor Peck, 908-328-4053, peck676@yahoo.com  
**Vice President:** Katie Powers, 302-632-3079, sheepgrl22@yahoo.com  
**Secretary:** Elizabeth Niedziela, 413-585-9158, niedzielae@gmail.com  
**Treasurer:** Rachel Schambow, 608-774-6765, highpt@hughes.net

## Ambassador

**Tom Schambow**, 608-201-6068, tschambo@uwoy.edu

## Directors

**Kyle Baubonis**, 207-785-2978, guiairidge@gmail.com  
**Connor Vincent**, 302-858-2841, whatamelon@bwave.com, loveskat2@aol.com  
**Taylor Wolff**, 701-783-4514, wolff\_taylor@hotmail.com  
**Chris MacCauley**, 610-593-2907, 484-319-8376, cmac.sheep@yahoo.com  
**Codee Gilbertson**, 701-833-6754, 22and5@gmail.com

## Intern

**Makayla Johnson**, 920-878-0157, makayla\_johnson@hotmail.com  
**Faith Galford**, 304-992-1256, faithgalford@yahoo.com

## Junior Coordinators

**Andy Asberry**, Home: 817-558-3932, Cell: 817-366-6366, AAsberry@aol.com  
**Donna Mays**, 208-767-3405, lostriverdm@yahoo.com

## Message from the UJSSA President

Hello Suffolk Juniors,

As I write this, the State fairs on the East Coast are all wrapped up and many of us are getting ready to go back to school and leave the sheep at home. Hope everyone had a great show season and there is one good thing about going back to school: we have Louisville to look forward to! For those of you who have not ventured beyond your County or State Fairs, I encourage you to consider a trip to the North American International Livestock Exposition in Louisville, Kentucky this November.

Whether you are an experienced showman or just getting started with Suffolks, NAILE is an amazing event for everyone who attends. It is a fantastic learning experience, and whether you bring sheep to show or just come to watch you are guaranteed a good time.

I especially want to reach out to Suffolk Juniors who might not exhibit their sheep often. You are the silent majority—and we on the Suffolk Junior Board would love to hear from you. We would like to know, for example, what the Junior Association can do better or how we can better encourage participation from those just getting started or that have not previously shown their sheep.

On another note, I can't help but notice the sharp increase of the slick shorn breeds at the shows I have attended this summer. One would think that Shropshires and Southdowns have taken over the sheep world. It won't be long before we have to follow suit. It is disheartening to see the Suffolk numbers shrinking while these two particular breeds grow at an amazing rate.

Lastly, the Junior Board would like to once again thank all of the sponsors, supporters, and exhibitors that attended the 2011 National Junior Show in Harrington, Delaware. The exhibitors from over two dozen states enjoyed a fantastic weekend filled with great food, friendship, and sheep. Watch for details regarding the 2012 Junior Show which will be in the Midwest next July.

I look forward to seeing many of you at the fall shows and please don't forget that you can contact any Junior Director with any questions. Our contact information is on the junior website.

Sincerely,  
Taylor Peck  
UJSSA President

# 2012 USSA Board of Director Candidates

## District 1



**Donna Mays  
Howe, ID**

Suffolks have been my breed of choice since 1950. Raising Suffolks for show, farm flocks, range rams, and feedlots is something I know well. Besides my Suffolk flock I manage six thousand white face range ewes and serve on the Board of Directors of the Idaho Wool Growers Association.

## District 1

My life in the sheep industry started December 3, 1977 when my father-in-law gave my wife and myself 30 head of commercial ewes as a wedding gift. In 1983, I purchased twelve head of registered Suffolk ewes from Kenny Manthei. Over the years, I have emphasized selecting sound, productive Suffolk sheep from such breeders as Roger Nichols, Anxel Luxford, and Heupel Suffolks. Raising Suffolk sheep is a family affair for me and my children. All four of my children help or have some input in Dreher Family Suffolks and I would not want it any other way. To me raising Suffolk sheep is not just about the sheep but the whole experience that it brings for myself and my family.

I have been a sheep shearer since 1985 and taught myself over the years how to cut out and fit sheep. I have worked as flock manager for both

I hold a current seat on the USSA Board of Directors. I also served as a USSA Director in 2003-2005. While on the Suffolk Board, I have served on many committees. Those that know me know that when I am on a committee I complete my task. I have never missed a meeting or conference call. This past year our Suffolk Board has worked hard at moving the Suffolk breed forward once again!

As co-coordinator of the United Junior Suffolk Sheep Association, I strive to share my knowledge and encourage greater junior participation. All my adult life I have been involved with young people. The juniors are our future; without them to follow in our footsteps we will be a dying breed. I have been a mentor to many juniors through the years. Each year I judge many junior and open sheep

shows, where I meet and talk with so many kids and adults about Suffolks, the USSA, and sheep in general. I also have had the privilege of judging Suffolks at the NAILE in Louisville.

As an OLD 4-H club member and adult leader, I still stand by the 4-H Pledge and believe it is relevant to my everyday life, "I pledge my head to clearer thinking, my heart to greater loyalty, my hands to larger service, my health to better living for my club, my communities, my country and my world".

Serving on the Suffolk Board is an honor. We should all be ambassadors of our breed. My intentions are to continue working with the juniors, keep our expenses at a minimum, and work at keeping SUFFOLKS the number one breed in the lead.

Broken Dollar Ranch and Montana Aerie within the Columbia industry. During my time as manager at each of these operations I helped bring home numerous awards including Best Consignment at the National Columbia Show three out of four consecutive years for Broken Dollar, and four out of five consecutive years for Montana Aerie.

I believe several qualities make me a good candidate for being a director. I bring fresh ideas to the table on how to strengthen the Suffolk breed as a whole. As a director, I believe that our strength is in our members, and I would persuade all your members to come up with new ways we could strengthen our breed. With the positive sheep market we currently are experiencing, we as breeders need to reach out to possible new members. We need to look for new ways to bring

new breeders into the Suffolk industry. I have always prided myself in raising big, sound,

quality Suffolk sheep and I continue to push to improve the breed every year. I believe these qualities demonstrate the strengths I will bring to the 2012 USSA Board of Directors.

Ron Dreher 406-781-5107  
74 Truly Loop, Great Falls, MT



**Ron Dreher  
Great Falls, MT**

# 2012 USSA Board of Director Candidates

## District 2



**Rob Zelinsky**  
Brookings, SD

Hello, Suffolk enthusiasts. I am excited to be a candidate for the United Suffolk Sheep Association Board of Directors. I have been raising Registered Suffolk Sheep since 1979. My wife

Christy and our 3 children (Riggen, Rhett, and Raesa) have 60 Registered Suffolk ewes in Brookings, South Dakota. Our location is one of the reasons I appreciate Suffolks (Breeding, Wether, Performance, and Commercial/Range Types). Here in East River South Dakota through my occupation, I have a daily opportunity to work with producers raising all types of Suffolks. This diversity is one of the strengths of our breed.

I feel it is important that the USSA's leadership continues to build the infrastructure of our organization, grows the association in a way that makes current breeders more active and makes outsiders want to be a part of the USSA, con-

tinues to foster our junior program, is proud that the UJSSA is strong enough and has a dedicated group of directors and leaders to host a prestigious event, and markets our product. There has never been a breed of sheep that has faced the adversity of Suffolks. I am referring to scrapie and the spider syndrome. What doesn't kill you can only make you stronger. We have a tremendous commodity to promote. There is not a breed that has the growth performance, carcass merit, and presence of Suffolk Sheep!!

If you share these thoughts, let's get this train a moving and make sure Suffolks stay as the "Breed in the Lead".

## District 3

I am 54 years old and live in Jefferson, Iowa on our family farm where I grew up. We raise registered Suffolks, commercial ewes, and feed market lambs. We also have a cow calf operation and feedlot cattle. I've been married for 30 years to Kathi, a registered nurse for Iowa Hospice. We have three children. Jaimee is a dentist in Boone, Iowa, married to Kyle Mowrer. They have Rylee, the best granddaughter ever born! Becci is a registered nurse working at Springfield Memorial Hospital in Springfield, Illinois. And David is a part-time farmer and full-time agronomist for a local coop.

When I ran for the board three years ago, I had no idea that it would involve so much turmoil. I hope that I helped control it rather than add to it. There have been some good and some not so good things happen during my term. I take responsibility for both. I would like the opportunity to continue with

the good and help with some topics I think are going to come up. First, I believe that we need to continue to work on a balanced budget. Secondly, the issues of slick sheared or fitted and breed type. I think we need both slick and fitted. In my opinion, the prettiest part of a Suffolk show is the fitted yearling ewes. On the topic of breed standards, we have no business telling you what type of sheep to raise. We have breed characteristics in place which is good, but the perfect Suffolk depends on you and your operations.

In closing, I would like to thank you for the opportunity to have been your director for the past three years and ask you to allow me to be your director for the next three.

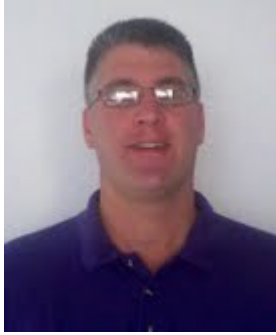


**Gary Hoskins**  
Jefferson, IA



# 2012 USSA Board of Director Candidates

## District 3



**Rex Quam  
Wanamingo, MN**

Hello fellow Suffolk Breeder's!! My name is Rex Quam and it is my pleasure to run for a Director in District 3 for the USSA!! We have had Suffolks in our family since 1977 when my brother started with a 4-H and FFA project. Over the years we have also had a few other breeds, but currently my dad Jerry and I lamb out 75 Suffolk and 25 Hamp ewes each spring and 10-15 ewes each fall. In high school I had interest, but when I was in college I started going to sales and wanted to improve our genetics and quality. Boy how have things changed in the last 20 years. In the 80's and 90's we showed at many county fairs in SE Minnesota and today we show at a couple of them that include our State Suffolk Show to see how the show string lines up and

to tame them down. Our main show focus the past few years has been the Great Iowa State Fair and Louisville. We now feel that utilizing technology like Embryo Transfer will be our next step in improving the quality in our flock.

I work full-time as an Adult Farm Management Instructor for Riverland Community College in Austin, MN. The main part of my job is to work with local farmers, who enroll in classes, to educate them on accounting, tax estimates, balance sheets, farm analysis by enterprise & cash flow projections. We also assist them in setting up business plans, marketing plans, farm transfers & estate planning. This keeps me real busy from December 1<sup>st</sup> to April 1<sup>st</sup>, but also allows me the ability to schedule when I need time off in the summer and fall to go to and participate at some of the major sheep shows and sales at the local, regional and national level.

I feel the USSA needs to keep the youth in mind when we make decisions that will affect the future and sustainability of our breed and industry with these changing economic times. We need to find ways to

get new families raising and showing Suffolk Sheep and educating them on how to take care of them and prepare them for the shows. If we don't get more people raising Suffolks there won't be anyone to sell them to. We do a great job now of getting support for the National Junior Suffolk Show and need to keep that up, but some people may not be able to attend. It would be a goal of mine to assist in getting more Regional shows for the youth.

I also feel as a board working together instead of working against each other is the best way to accomplish the goals of the Suffolk Breed. Negativity and bashing of other board members will not do anything but decrease enthusiasm of the breeders and youth and waste time that some of us don't have. Let's put a positive spin on the Suffolk Breed and get more people involved!!

I would appreciate your vote as director of District 3. If you have any questions or concerns, feel free to contact me on my cell phone, 507-251-2650, or email, [rquam@frontiernet.net](mailto:rquam@frontiernet.net).

Thank You!

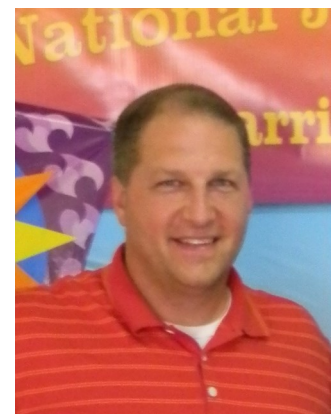
## District 3

Hello Suffolk Breeders, I am excited to be a candidate for the United Suffolk Sheep Association Board of Directors. I have been raising Registered Suffolk sheep since 1982. I live in central Iowa with my wife Shannon and our 4 children Lily 11, Ty 9, Landen 6, and Tessa 2. We run 50 Registered Suffolk ewes and 15 Wether type ewes on our farm.

I come from a family where my dad has been raising Suffolk sheep since he was in high school and has recently finished his 44<sup>th</sup> year of showing at the Iowa State Fair. My mom has a similar background in that she also grew up raising and showing sheep in rural Iowa.

The USSA's leaders have done a great job leading our breed through a rough time in the association and we need to build on that going into the future. Growing the association would be one of my main focuses and not alienating any one type of Registered Suffolk sheep. There is a type and place for different characteristics of our Suffolk sheep.

With 4 kids that participate in the USSA, I would like to see the organization continue to grow and foster leadership skills in the youth of our association.



**Paul Skartvedt  
Radcliffe, IA**

# 2012 USSA Board of Director Candidates

## District 4



**Lisa M. Webster**  
Windham, ME

As a 5th generation farmer and co-owner of North Star Sheep Farm, I have a lifetime of experience raising sheep. Our flock of 400 purebred

Suffolk and Hampshire sheep are raised for both show and market. My passion is sheep farming and preserving lamb production for future generations.

In the sheep industry in New England I am a well-connected businesswoman. My lamb market is expanding beyond New England and I believe the Suffolk breed can benefit from my lamb market activities. I am an active member in several non-profit sheep associations in district four. These organizations support the many farms and breeders by providing education opportunities, sharing best practices, and creating a community for sharing of issues and working to resolution.

Farming is my life, and expanding the usefulness of the purebred industry is essential to its survival. Rather than sit by the sidelines, I am an outspoken advocate for not only preserving the purebred Suffolk industry, but making it profitable. This is the key to continuing its legacy.

I will represent all Suffolk flocks in my district and across America. I am willing to devote the time and energy necessary to serve the members of the USSA.

Thank you for considering me as your next director in district four.

## Current USSA Board of Directors

### Officers

#### **President:**

Bill MacCauley (District 4)  
Home: 610-593-2907  
Cell: 610-256-1608  
billmac@johnrock.com  
(Exp. 2013)

#### **Vice President:**

Donna Mays (District 1)  
208-767-3405  
lostriverdm@yahoo.com  
(Exp. 2011)

#### **Treasurer:**

Richard Schambow (District 3)  
Home: 608-743-1473  
Cell: 608-774-6068,  
highpt@hughes.net  
(Exp. 2011)

### District 1

**Jake Falleston** (Exp. 2012)  
541-979-0868  
jake101@netscape.com

**Larry Pauly** (Exp. 2013)  
435-864-2777  
l\_pauly@msn.com

### District 2

**William (Bill) Gergen** (Exp. 2012)  
402-540-7884  
wegergen@yahoo.com

**Tom Burke** (Exp. 2011)  
Cell: 816-532-0811  
angushall4@earthlink.net

**Amanda Bergsieker** (Exp. 2013)  
660-232-1433  
ab\_vettech@yahoo.com

### District 3

**Gary Hoskins** (Exp. 2011)  
Home: 515-386-8055  
Cell: 515-370-1353  
hoskinsagsolutions@yahoo.com

**Kim Ketcham** (Exp. 2013)  
Home: 618-656-5388  
Cell: 618-581-3554,  
kimketcham@hotmail.com

### District 4

**Dr. Gerald F. Clair** (Exp. 2012)  
Home: 814-238-1233  
Cell: 814-280-2621  
clair4076@aol.com

**Andrew Hukowicz** (Exp. 2011)  
413-478-5774  
hukowicza@helenachemical.com

# NATIONAL JUNIOR SUFFOLK SHOW RESULTS

June 30 - July 3, 2011 • Harrington, Delaware

Judge: Kyle Thayer

- Slick Shorn Yearling Ram - 1) Kyle MacCauley, PA
- Production Yearling Ram - 1) Christopher MacCauley, PA
- Slick Shorn Senior Ram - 1) Christopher MacCauley, PA
- Slick Shorn Junior Ram Lamb - 1) Ty Schoelerman, IA; 2) Christopher MacCauley, PA
- Production Ram Lamb - 1) Christopher MacCauley, PA
- Junior Champion Slick Shorn Ram - Kyle MacCauley, PA (Yearling)
- Reserve Junior champion Slick Shorn Ram - Christopher MacCauley, PA (Senior Ram)
- Junior Champion Production Ram - Christopher MacCauley, PA (Yearling)
- Grand Champion Slick Shorn Ram - Kyle MacCauley, PA
- Reserve Grand Champion Slick Shorn Ram - Ty Schoelerman, IA (Junior Ram Lamb)
- Grand Champion Production Ram - Christopher MacCauley, PA
- Reserve Grand Champion Production Ram - Christopher MacCauley, PA (Yearling)
- Yearling Rams, Owned - 1) Elizabeth Niedziela, MA; 2) Faith Galford, WV; 3) Taylor Peck, NJ
- Yearling Rams, Bred & Owned - 1) Andrew Slack, WI; 2) Taylor Peck, NJ; 3) Christopher MacCauley, PA
- Senior Rams, Owned - 1) Chelsea Bilyeu, PA; 2) Kaitlyn Fuss, MD
- Senior Rams, Bred & Owned - 1) Christopher MacCauley, PA
- Senior Champion Owned Ram - Chelsea Bilyeu, PA (Senior Ram)
- Reserve Senior Champion Owned Ram - Elizabeth Niedziela, MA
- Senior Champion Bred & Owed Ram - Andrew Slack, WI (Yearling)
- Reserve Senior Champion Bred & Owned Ram - Taylor Peck, NJ (Yearling)
- Junior Ram Lambs, Owned, Class 1 - 1) Taylor Peck, NJ; 2) Kyle Baubonis, ME; 3) Alison Heitz, TX
- Junior Ram Lambs, Owned, Class 2 - 1) Marissa Bilyeu, PA; 2) Kyle Baubonis, ME; 3) & 4) Andrew Slack, WI
- Junior Ram Lambs, Bred & Owned, Class 1 - 1) Ty Schoelerman, IA; 2) & 5) Zachary Schoelerman, IA; 3) Kyle MacCauley, PA; 4) Christopher MacCauley, PA
- Junior Ram Lambs, Bred & Owned, Class 2 - 1) Cody Matthews, OH; 2) Rachel Matthews, OH; 3) Taylor Peck, NJ; 4) Connor Vincent, DE; 5) Codee McClure, IL
- Junior Champion Owned Ram - Marissa Bilyeu, PA
- Reserve Junior Champion Owned Ram - Taylor Peck, NJ
- Junior Champion Bred & Owned Ram - Ty Schoelerman, IA
- Reserve Junior Champion Bred & Owned Ram - Zachary Schoelerman, IA
- Grand Champion Owned Ram - Chelsea Bilyeu, PA
- Reserve Champion Owned Ram - Elizabeth Niedziela, MA
- Grand Champion Bred & Owned Ram - Andrew Slack, WI
- Reserve Grand Champion Bred & Owned Ram - Taylor Peck, NJ
- Supreme Champion Ram - Chelsea Bilyeu, PA
- State Flock - Pennsylvania
- Team Showmanship, Senior - Kristina Weld & Elizabeth Niedziela
- Team Showmanship, Junior - Adalyn & Ty Schoelerman, IA
- Team Showmanship, Intermediate - Lily & Jessica
- Slick Shorn Yearling Ewes - 1) Christopher MacCauley, PA; 2) Ty Skartvedt, IA; 3) Codee McClure, IL; 4) Andrew Slack, WI; 5) Chelsea Bilyeu, PA
- Production Yearling Ewes - 1) Christopher MacCauley, PA; 2) Brandon Troy, MD; 3) & 5) Kyle Baubonis, ME; 4) Cade Eymann, MD
- Slick Shorn Senior Ewes - 1) Landen Skartvedt, IA; 2) Christopher MacCauley, PA
- Senior Champion Slick Shorn Ewe - Christopher MacCauley, PA (Yearling)
- Reserve Senior Champion Slick Shorn Ewe - Ty Skartvedt, IA (Yearling)



# NATIONAL JUNIOR SUFFOLK SHOW RESULTS

June 30 - July 3, 2011 • Harrington, Delaware

Judge: Kyle Thayer

- Senior Champion Production Ewe - Christopher MacCauley, PA (Yearling)
- Reserve Senior Champion Yearling - Brandon Troy, MD (Yearling)
- Slick Shorn Junior Ewe Lamb - 1) Zachary Schoelerman, IA; 2) Christopher MacCauley, PA
- Production Junior Ewe Lamb - 1) Christopher MacCauley, PA
- Junior Champion Slick Shorn Ewe Lamb - Zachary Schoelerman, IA
- Junior Champion Production Ewe Lamb - Christopher MacCauley, PA
- Grand Champion Slick Shorn Ewe - Christopher MacCauley, PA
- Grand Champion Production Ewe - Christopher MacCauley, PA
- Reserve Grand Champion Production Ewe - Brandon Troy, MD
- Yearling Ewes Weaned a Lamb - 1) Faith Galford, WV
- Yearling Ewes, Owned, Class 1 - 1) Connor Vincent, DE; 2) Makayla Johnson, WI; 3) Celeste Block, WI; 4) Ashley Gouge, DE; 5) Alison Heitz, TX
- Yearling Ewes, Owned, Class 2 - 1) Chelsea Bilyeu, PA; 2) Taylor Peck, NJ; 3) Jessica Greenslit, MA; 4) Alison Heitz, TX; 5) Paige Vincent, DE
- Yearling Ewes, Bred & Owned, Class 1 - 1) & 3) Christopher MacCauley, PA; 2) Kyle MacCauley, PA; 4) Clay Matthews, OH; 5) Brooke Mazepink, PA
- Yearling Ewes, Bred & Owned, Class 2 - 1) Taylor Peck, NJ; 2) Christopher MacCauley, PA; 3) Cody Matthews, OH; 4) & 5) Andrew Slack, WI
- Senior Ewes, Owned - 1) Paige Vincent, DE; 2) & 3) Taylor Peck, NJ
- Senior Ewes, Bred & Owned - 1) Christopher MacCauley, PA; 2) Ty Skartvedt, IA
- Senior Champion Owned - Chelsea Bilyeu, PA
- Reserve Senior Champion Owned - Connor Vincent, DE
- Senior Champion Bred & Owned - Christopher MacCauley, PA
- Reserve Senior Champion Bred & Owned - Taylor Peck, NJ
- Junior Ewe Lambs, Owned, Class 1 - 1) Chelsea Bilyeu, PA; 2) Kaleb Schakel, IN; 3) Katrina Frey, PA; 4) Celeste Block, WI; 5) Ryan Matthews, OH
- Junior Ewe Lambs, Owned, Class 2 - 1) Marissa Bilyeu, PA; 2) & 4) Alison Heitz, TX; 3) Marissa Bilyeu, PA; 5) Taylor Peck, NJ
- Junior Ewe Lambs, Bred & Owned, Class 1 - 1) Christopher MacCauley, PA; 2) & 3) Kyle MacCauley, PA; 4) Adalyn Schoelerman, IA; 5) Ty Schoelerman, IA
- Junior Ewe Lambs, Bred & Owned, Class 2 - 1) Andrew Slack, WI; 2) & 5) Taylor Peck, NJ; 3) & 4) Jason Mazepink, PA
- Junior Ewe Lambs, Bred & Owned, Class 3 - 1) Andrew Slack, WI; 2) Christopher MacCauley, PA; 3) Makayla Johnson, WI; 4) Brooke Mazepink, PA; 5) Connor Vincent, DE
- Junior Champion Owned Ewe - Chelsea Bilyeu, PA
- Reserve Junior Champion Owned Ewe - Kaleb Schakel, IN
- Junior Champion Bred & Owned Ewe - Christopher MacCauley, PA
- Reserve Junior champion Bred & Owned Ewe - Andrew Slack, WI
- Grand Champion Owned Ewe - Chelsea Bilyeu, PA
- Reserve Grand Champion Owned Ewe - Connor Vincent, DE
- Grand Champion Bred & Owned Ewe - Christopher MacCauley, PA
- Reserve Grand Champion Bred & Owned Ewe - Taylor Beck, NJ
- Supreme Champion Ewe - Christopher MacCauley, PA
- Suffolk market lambs, Class 1 - 1) Jessica Thompson; 2) Jason Mazepink; 3) Elizabeth Niedziela; 4) Anne Maxwell; 5) Gabriella Tovar
- Suffolk market lambs, Class 2 - 1) Brooke Mazepink; 2) Sara Culver; 3) Katrina Frey; 4) Cade Eyman; 5) Hunter Russell

# NATIONAL JUNIOR SUFFOLK SHOW RESULTS

June 30 - July 3, 2011 • Harrington, Delaware

Judge: Kyle Thayer

- Champion Suffolk Market Lamb – Brook Mazepink
- (Class 2) Reserve Champion Suffolk Market Lamb – Sara Culver (Class 2)
- Suffolk-cross market lambs, Class 3 – 1) Katie Powers; 2) Clara Watson; 3) Lily Skartvedt; 4) Alison Heitz; 5) Jessica Thompson
- Suffolk-cross market lambs, Class 4 – 1) Sam Watson; 2) Sara Culver; 3) Sam Watson; 4) Madeline Watson; 5) Hunter Russell
- Champion Suffolk-Cross Market Lamb – Sam Watson (Class 4)
- Reserve Champion Suffolk-Cross Market Lamb – Sara Culver (Class 4)
- Overall Champion Market Lamb – Sam Watson (Suffolk-Cross Class 4)
- Overall Reserve Champion Market Lamb – Sara Culver (Suffolk-Cross Class 4)
- Suffolk Yearling Wether Dams – 1) Katie Powers; 2) Faith Galford
- Suffolk Ewe Lamb Wether Dams – 1) Taylor Peck; 2) Jessica Thompson; 3) Katie Powers
- Champion Suffolk Wether Dam – Taylor Peck (Ewe Lamb)
- Reserve Champion Suffolk Wether Dam – Jessica Thompson (Ewe Lamb)
- Suffolk-Cross Yearling Wether Dam – 1) Lily Skartvedt
- Suffolk-Cross Ewe Lamb Wether Dam – 1) Katie Powers; 2) Lily Skartvedt; 3) Victoria Arnevik; 4) Jessica Thompson
- Champion Suffolk-Cross Wether Dam – Lily Skartvedt (Yearling)
- Reserve Champion Suffolk-Cross Wether Dam – Katie Powers (Ewe Lamb)
- Overall Champion Wether Dam – Lily Skartvedt (Suffolk-Cross Yearling)
- Overall Reserve Champion Wether Dam – Taylor Peck (Suffolk Ewe Lamb)
- Senior Showmanship – Katie Powers
- Intermediate Showmanship – Troy Brandon
- Junior Showmanship – Landon Skartvedt



Exhibitors at the 2011 National Junior Suffolk Show, Harrington, Delaware

# NATIONAL JUNIOR SUFFOLK SHOW RESULTS

June 30 - July 3, 2011 • Harrington, Delaware



**Supreme Champion Ewe**  
2011 National Junior Suffolk Show  
Christopher MacCauley, PA  
Yearling Ewe, Bred & Owned



**Supreme Champion Ram**  
2011 National Junior Suffolk Show  
Chelsea Bilyeu, PA  
Senior Ram Lamb, Owned



# Office Notes

## Futurity Point Record Forms

Don't forget to send your Futurity Point Record Forms to the office.

## We Want Your Photos!

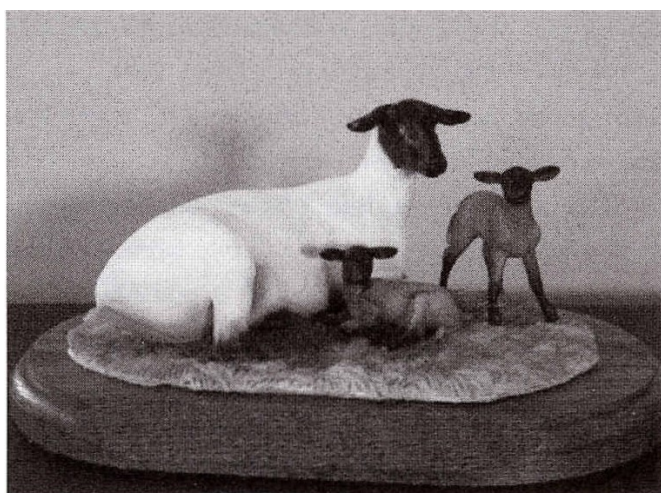
We would like to feature some photos in each of our newsletters of our members and their Suffolks! Whether you have old or new photos, all are welcome. We would also like to use some member photos for promotional materials. If you would like to submit photos, you can mail them to the office address, P.O. Box 995, Ottumwa, IA 52501, and then we can return them to you after we scan them. You can also email any photos to [info@u-s-s-a.org](mailto:info@u-s-s-a.org). We look forward to seeing all your photos!

## Sheep Management Education in the Comfort of Your Own Home

The Pipestone Lamb and Wool Program is a sheep management education/consulting program offered by Minnesota West Community and Technical College located at Pipestone, Minnesota. The purpose of the program is to help sheep producers increase income and profit through the production of quality lamb and wool. To maximize the profit per ewe and realize the full potential of all sheep through use of modern management practices, new technologies and new approaches to marketing of both lamb and wool.

Continuing with providing various delivery methods of educational information, the Pipestone Lamb and Wool Program launched online courses so sheep enthusiasts can keep current in the comfort of their own home or office.

For more information visit the Pipestone Lamb and Wool Program web page [www.pipestonesheep.com](http://www.pipestonesheep.com) or contact one of the Lamb and Wool instructors, Philip Berg, [philip.berg@mnwest.edu](mailto:philip.berg@mnwest.edu), (507) 825-6799 or Mike Caskey, [mike.caskey@mnwest.edu](mailto:mike.caskey@mnwest.edu), (507) 825-6808. To register for one of the on-line courses contact Sue Lovell (507) 847-7929, [sue.lovell@mnwest.edu](mailto:sue.lovell@mnwest.edu) or register on-line at [www.mnwest.edu/formmail/formdl.htm](http://www.mnwest.edu/formmail/formdl.htm)



**These Suffolk sculptures are still available. Contact the office if you are interested in purchasing one.**

## United Suffolk Sheep Association

PO Box 995  
Ottumwa, IA 52501

Phone: 641-684-5291

Fax: 641-682-9449

E-mail: [news@u-s-s-a.org](mailto:news@u-s-s-a.org)



"The

Breed in the Lead"

We're on the Web!

[www.u-s-s-a.org](http://www.u-s-s-a.org)

## DON'T FORGET TO VOTE!

Director election ballots have been mailed, so expect to see it in your mailbox soon!

Also included are proposed changes to the USSA bylaws.

*Ballots must be  
returned by*

*October 1, 2011*

## Montana Suffolk Sheep Breeders Association turns 30 years old!!

The Montana Suffolk Sheep Breeders Association was formed in 1981 when a group of dedicated Montana Suffolk sheep breeders joined together to form the association. The association was formed to educate, promote and support the Suffolk sheep breeders in Montana. Many people recognize Suffolk sheep as those black faced lambs exhibited by 4H kids at local fairs.

The Montana Suffolk Sheep Breeders Association was formed in 1981 with Susan Quist – Clyde Park, Don and Maureen Cleveland – Fairfield, Tom Shaughnessy – Corvallis, Tom Grimes – Cascade, Cliff Abbott – Livingston as officers and directors.

Montana Suffolk Sheep Breeders Association held a show and sale in Livingston until 1986. It was then held in August in conjunction with the Billings fair until the show was disbanded in 1993 and the sale in 2002.

Now Montana Suffolk Sheep Breeders Association sell sheep at the Choteau Sheep Expo in Choteau, MT, the Montana Ram Sale in Miles City sponsored by the Montana Wool Growers Association or by private treaty from the ranch.

Some of the members, directors and officers through the years were: Paul Balier - Hamilton; Kathy and Dave DeVries - Roberts; Charlie Peterson - Glendive; Bill McKay; Joe & Betty Lee -Belgrade; Guy & Ruth Sowers - Chinook; Marlene Amen - Billings; Geraldine Hathway -Bozeman; Steven & Kim Knutson - Clyde Park; Bert Degenhart - Billings; Walt & Sharyl Raffelson - Big Horn; Jack Hume - Livingston; Ann Schilling - Livingston; Jim Cabtree; Linda Bowman - Lodge Grass; Matthew Eckstein - Absorkee; Ginger Miller - Whitehall; Gail Stevens - Joliet; Keith & Kathy Stower; Ray & June Rath - Miles City; Rick & Dee Abbott - Kinsey; Lorna Theriault; Robbie Isbell - Bozeman; Annette Frank; Linda Hull; Betty Smith; Mindi Wilson, DMV; Mike Taylor; Kathy Ostrum; Mary Donohoe; Gayle Ott; Laura Mitchell - Creason - Livingston; Curt Robbins - Columbus; Sandy Newmann - Hot Springs; Randy & Rick Reinlasoder; Diana Benitz-Charlo; Gayle Lucas - Philipsburg; A.F. Luxford - Wilsail; Merle Raph - Shelby; Elda Nichols - Shelby; Dana Penrod - Miles City; Eric & Stephanie Hansen - Dillon; Brett & Susan Mosby - Forsyth; Angela Murray - Jordan; and Dakota Gaustad - Scobey. Pete Knutson - Clyde Park was the auctioneer for our sales.

A printed sheep breeder's directory was started in 1994 and still continues today. The website [www.mtsuffolksheep.org](http://www.mtsuffolksheep.org) contains information on current Suffolk sheep member breeders who have sheep for sale, links to education on sheep along with videos showing how to show sheep.

The Montana Suffolk Sheep Breeders Association established a ewe grant in 2006 to promote Suffolk sheep and assist our states youth in getting started in the sheep business. Annual raffle ticket sales are used specifically for the ewe grant fund. "The ewe grant is a great way for kids to get started raising sheep. To date, 18 ewe grants have been awarded to Montana youth between the ages of 9 and 16. This year's Montana Suffolk Sheep Breeders Association ewe grant winners are Gage Murray - Jordan and Emily Neville - Corvallis" said Brett Mosby President of the Association.

Montana Suffolk Sheep Breeders Association is working hard to promote Suffolk Sheep and helping today's youth become tomorrow's sheep people. If you would like more information please visit the Montana Suffolk Sheep Breeders Association website at [www.mtsuffolksheep.org](http://www.mtsuffolksheep.org).