

The Suffolk Newsletter

United Suffolk Sheep Association

Notes from the USSA Office

Happy November!

Wow, hard to believe it's November. In just a few short days the 2012 NAILE festivities will begin. Please find a detailed schedule of the events further in the newsletter. I hope that if you are planning to be at NAILE you can find a chance to attend some of our Suffolk Events. Whether it's saying hello to Suffolk friends at the Suffolk Social, attending the junior board meeting to see what they are planning for next July or looking to purchase a needed addition for your flock at the Suffolk Sale, I hope to see you there! Also, I invite you to stop by the Suffolk Booth and say hello and check out the silent auction items—proceeds from the silent auction benefit the UJSSA's activities!

Have you sold a ram or bred ewe this fall? Don't forget to send registration certificate to be transferred! Also, if it is a bred ewe, please remember to fill out the breeding certificate located on the back of the ewe's registration paper.

Before you know it, the holidays will be here! If you looking for a unique gift for a Suffolk Enthusiast, take a look a the Limited Edition Suffolk Sculpture! Please order by Dec. 10th to insure it's arrival in time for the holidays!

As always, please feel free to contact me if you need anything!



Happy Thanksgiving!

Amanda

Welcome!

...new members, returning past members (whom have not been active in recent years) and past UJSSA members who have joined the USSA during September 2012.



Bill & Sharon Kabel, IN

Steve & Judith Komp, WI

DON'T FORGET TO MAIL THE OFFICE YOUR \$5 ENTRY FEE FOR THE NAILE OPEN SHOW.

November 2012

Volume 2, Issue 9

Inside this issue:

USSA Election Results	2
USSA Director Spotlight	3
Notes from the UJSSA	6
UJSSA Director Spot-	7
Learning Opportunities	10
USSA Member News	12
Calendar of Events	13
NAILE Information	17
Classified Ads	18
USSA Office Notes	19

2012/2013 USSA DIRECTOR ELECTION RESULTS

District 1 - Keith Pumphrey (31 votes)

Write-in: Alan Batt (7 votes)

District 2 - Virginia Gergen (16 votes)

Glen Anderson (11 votes)

Leroy Braasch (6 votes)

Write-in: Alan Kjeldgaard (1 vote)

District 3 - Paul Skartvedt (41 votes)

Write-in: Marlin Subra (1 vote)

Write-in: Glen Nelson (1 vote)

Write-in: Randy Dombek (1 vote)

Write-in: Matt Benda (1 vote)

Write-in: Toby Bender (1 vote)

District 4 - Diane Russell (43 votes)

Randy Hodges (16 votes)

Congratulations to the newly elected USSA Directors: Keith, Virginia, Paul & Diane!

Current USSA Board of Directors & Officers

Officers

President:

Rob Zelinsky (District 2)

Brookings, SD

605-695-7791

robzelinsky@yahoo.com

(Exp. 2014)

Vice President:

Bill MacCauley (District 4)

Atglen, PA

Home: 610-593-2907

Cell: 610-256-1608

billmac@johnrock.com

(Exp. 2013)

Treasurer:

Richard Schambow

Janesville, WI

Home: 608-743-1473

Cell: 608-774-6068

highpt@hughes.net

District 1

Jake Falleson (Exp. 2012)

Crabtree, OR

541-979-0868

jake101@netscape.com

Donna Mays (Exp. 2014)

Howe, ID

208-767-3405

lostriverdm@yahoo.com

Larry Pauly (Exp. 2013)

Delta, UT

435-864-2777

l_pauly@msn.com

District 2

William (Bill) Gergen (Exp. 2012)

Geneva, NE

402-540-7884

wegergen@yahoo.com

Amanda Bergsieker (Exp. 2013)

Waverly, MO

660-232-1433

ab_vettech@yahoo.com

District 3

Gary Hoskins (Exp. 2012)

Jefferson, IA

Home: 515-386-8055

Cell: 515-370-1353

hoskinsagsolutions@yahoo.com

Kim Ketcham (Exp. 2013)

Edwardsville, IL

Home: 618-656-5388

Cell: 618-581-3554,

kimketcham@hotmail.com

Rex Quam (Exp. 2014)

Wanamingo, MN

Home: 507-824-2248

Cell: 507-251-2650

rjqquam@frontiernet.net

District 4

Dr. Gerald F. Clair (Exp. 2012)

State College, PA

Home: 814-238-1233

Cell: 814-280-2621

eclair4076@aol.com

Lisa Webster (Exp. 2014)

Windham, ME

Home: 207-892-2161

northstarfarms@me.com

Get to Know Your USSA Board of Directors.

WILLIAM "BILL" GERGEN

Geneva, NE

My name is William E. Gergen: "W.E.", "WEG", "Wild Willie", "Fuzzy Bill", and other names we can't mention. This November will be 50 years in the Registered Suffolk business. I started with two bred Registered Suffolk Ewes through the Geneva "FFA Chapter Livestock Chain", Geneva, Nebraska.



I needed a project and this would be something of my own, not something my family was already involved in. Hallie and Maxine Gergen, my parents, farmed, fed cattle, raised chickens and Registered Hampshire hogs. The way the "FFA Chapter Chain" worked was I cared for the two bred ewes and lambed them out, kept the lambs, and returned the ewes to the FFA Chapter. Thus was the beginning of WEG Suffolks.

WEG Suffolks tries to be as diverse as possible in marketing: Registered Seed Stock, Commercial Farm Flocks, Range Rams, Club Lambs, and Freezer Lambs. I do as much off the farm marketing as possible and I also sell at a few sales.

The main reason I showed as much as I did was to take my sheep to the people. I've sold a lot of sheep over the years at Fairs all over the country. I've always thought this was the greatest form of advertising—where you got more "bang for the bucks".

At one time I ran 150 Registered Suffolk Ewes. As the "miles have rolled over on the odometer of life" I currently run about 75 Registered Ewes—1/2 Suffolk and the other 1/2 Shropshires and Hampshires.

Fondest memories—I should write a book or books on this subject.

- First out of state major show: Ozark Empire Show, Springfield, MO. This is where I met Glen Armontrout and Joe Bill Reid both from Missouri. These two gentlemen taught me a lot about show ring ethics, feeding show sheep, and proper exercise and handling of show sheep.
- I bred and raised the first Suffolk lamb that was a Champion Market Lamb at a major show—the Nebraska State Fair in 1968. The lamb was shown by my sister, Virginia.
- First trip to the Chicago International Livestock Expo: seeing the packing plants, stock yards, and having a Big Steak in the Inn.
- Very first NAILE (39 years ago), which brought about a unique comparison between the "old" and the "new". The mystique of Chicago will never be matched and is impossible to explain.
- Each and every show and sale always brings the opportunity to meet new people and add to list of "fondest memories"! Over the "miles" (years) I've been to over 800 shows and sales.

I became a Director to make a difference and to help the USSA to operate as efficiently as possible. When I was first elected to the Board of Directors of the USSA, the USSA was having serious financial problems that were primarily related to the inefficiency of the office. Members of the USSA were pumping blood (money) into the USSA without stopping the bleeding first. As a Board we addressed the issues by evaluating the problems and came to a solution. This was a big challenge and not a popular decision with some USSA members, but life goes on.

The list of things I have gained from raising Suffolks goes on and on. The most important things are the interaction with people from all over the United States.

(Continued on page 9)

A message from the UJSSA President

Hello Junior Members,

It is with excitement that I get to invite you to the activities that we have throughout the year! I would like to take the time to explain to you what the National Junior Show is all about. The Junior Show is 4 days packed with so many amazing things. We have many contests kids can participate in including Meat Evaluation, Judging Contest, Fitting Contest, Public Speaking, Ewe Lead with Wool, Essay Contest, Photography, Logo Design, and more! They have the opportunity to participate in anything that tickles their fancy. We have the show on three different days. The market lamb show is usually the first day followed by the ewes on the next day and the ram show being on the last day. We also have market lamb showmanship on one day and breeding sheep showmanship following the ewe show. We have a breakfast social on the morning of the ewe show, a pizza party with games that night, and a sub lunch on the last day of the show. On Saturday night we have a banquet where we have supper, hand out awards, and elect and announce our new president. The last of the junior show we have State Flock, Team Showmanship, Adult Showmanship, and the Good Shepard Award is handed out. The National Junior show is also a time where we interview the people that would like to be part of our Junior Board of Directors. Personally the junior show has been one of the most rewarding experiences ever. You get to be around people that have the same passion as you do and nothing could be better than that.

Taylor Wolff

View photos of the 2012 National Junior Suffolk Show!

(click above)

UJSSA Board of Directors

www.ujssa.org

The UJSSA is on facebook!



Officers

President:

Taylor Wolff, Oakes, ND
701-783-4514,
wolff_tayler@hotmail.com

Vice President:

Chris MacCauley, Atglen, PA
610-593-2907, 484-319-8376,
cmac.sheep@yahoo.com

Secretary:

Elizabeth Niedziela, Hadley, MA
413-585-9158, niedziela@gmail.com

Treasurer:

Connor Vincent, Laurel, DE
302-858-2841, loveskat2@aol.com,
whatamelon@bwave.com

Directors

Codee Gilbertson, Sherwood, ND
701-833-6754, 22and5@gmail.com

Taylor Peck, Pittstown, NJ
908-328-4053, peck676@yahoo.com

Makayla Johnson, Manawa, WI
920-878-0157, ma-
kayla_johnson@hotmail.com

Faith Galford, White Sulphur Springs, WV
304-992-1256,
faithgalford@yahoo.com

Junior Coordinators

Amanda Bergsieker, Waverly, MO
660-232-1433, ab_vettech@yahoo.com

Rebecca Krinsky, Washington, OK
405-501-1593, krin-
skyhamps@gmail.com

Ambassador

Danielle Wittmann, New Glarus, WI,
608.214.5908,
wittmandanielle@gmail.com

Interns

Paige Vincent, Laurel, DE
302-875-5369,
whatamelon@bwave.com

Jaclynn Kuntson, Centerville, SD
605-670-2147, ajkuntson@iw.net

Hope Juntunen, Vienna, SD
605-868-0503, HJ3051@K12.sd.us

Andrew Slack, Lake Geneva, WI
262-903-1326, Kslack-
suffolks@yahoo.com

Kristina Weld, Warwick, MA
413-387-2615, suffolks25@gmail.com

If ewe have a little free time . . .

(for the kid in everyone!)

Can ewe find the hidden words?

P S S G R D U T D T S R T T T
 U M E N E H Z U B D N R S F
 F R M E V U T R M U O R A E R
 R N C P R A K L X E E F D V I
 I P A S K E E E E H E W I R E
 X O D O Y I B L T H A T T A N
 B A L U F K N A H T S Y I H D
 Y F A L L E E P R P H L O N S
 O E B N W W D C I N W I N R G
 S A G E D W I R B E H M S A Q
 B E B L A C K F R I D A Y M E
 M V O E X H I B I T L F H L Q
 I C M B B G K I R E N N I D L
 M N Q S O D T R Y K V A G X O
 L A Z S F N H G H O N W C M Y

BARN
 BLACK FRIDAY
 COLD WEATHER
 DINNER
 EWE
 EXHIBIT
 FALL
 FAMILY
 FRIENDS
 HARVEST

LEAVES
 MEETING
 NAILE
 PUMPKIN PIE
 RAM
 SHELTER
 THANKFUL
 THURSDAY
 TRADITIONS
 TURKEY

2012 Junior Suffolk Shows

NBVEEROM

4		8					

LALF LAMGNBI

				3		9			

NILSESGSB

				5		10		6	

FYMALI TIRHESGAGN

				12		13		11		1		2			

RIZNIETWE

								7		

1	2	3	4	K	5	6	7	8	9	10	11	D	12	13	

Juniors— Check out these upcoming Junior Suffolk Shows!

If you have a junior show that you would like to add to this list, please email the event to news@u-s-s-a.org.

- Nov 10 NAILE Junior Wether Show, 8am
- Nov 11 NAILE Junior Breeding Sheep Show, 8am

Hope to see you at the 2012 NAILE!

Notes from the UJSSA

Pizza Party Invitation!

UJSSA Members, there will be a pizza party held on Saturday, November 10th at noon during NAILE. Please look for location details at the USSA/UJSSA booth at NAILE.

2013 UJSSA National Junior Suffolk Show T-Shirt Design & Slogan Contest

The UJSSA is seeking ideas for the 2013 Junior Suffolk Show T-Shirt Design and Slogan. The 2013 Junior Suffolk Show will be held in East Lansing, MI. Put your creative hat on and see what you can come up with! Designs/Slogans are due to the office by Nov. 1st. Entries can be submitted to info@u-s-s-a.org or mailed to the USSA Office, PO Box 995, Ottumwa, IA 52501. The winner will be chosen during the UJSSA Board meeting held at NAILE. The winner will receive a paid 2013 UJSSA Membership!

UJSSA Raffle

Again this year, the UJSSA will be selling raffle tickets to raise money for the 2013 Junior Suffolk Show. Raffle tickets are \$5 per ticket or 5 tickets for \$20. This year's raffle prizes include a Golf Club Set (value approximately \$1000, donated by Rebecca & Josh Krinsky), a half-page, full color ad in *The Banner Sheep Magazine* (valued at \$450, donated by *The Banner Sheep Magazine*), and \$100 cash prize. To purchase raffle tickets, please contact a UJSSA Director.

UJSSA Silent Auction

The UJSSA will be having a Silent Auction throughout the events at NAILE. If you are interested in supporting the UJSSA and would like to donate an item for the UJSSA Silent Auction, please contact UJSSA President, Tayler Wolff.

Attention Michigan Suffolk Breeders!

Would you be willing to help the UJSSA plan and coordinate the 2013 National Junior Suffolk Show? The UJSSA is looking for volunteers to help with this year's events. If interested, contact UJSSA President, Tayler Wolff. If you are planning to attend the 2012 NAILE events, you are welcome to join the UJSSA Board Meeting held on Saturday, November 10th at 6pm (location TBA).

UJSSA MEMBERS

You're invited to attend the 2013 National Junior Suffolk Show in East Lansing, MI!
More details to come...

Futurity Point Record Forms Don't forget to send your Futurity Point Record Forms to the office. All Futurity points are due to the office by December 1, 2012.

CURRENT FUTURITY STANDINGS

1. Molly Jo Woods, Baylis, IL, LynLee 12029	50 pts
2. Katherine Newhouse, State Center, IA Damman Suffolks 12-138	48 pts
2. Tayler Wolff, Oakes, ND, Quam 11023	48 pts
4. Molly Jo Woods, Baylis, IL, Skartvedt 4467	44 pts
5. Ashley Burns, Jamestown, IN, LynLee 12012	16 pts

Get to Know Your Junior Board of Directors.

ANDREW SLACK

Lake Geneva, WI

Where do you go to school? If still in high school, where they plan to go to college and major. If college, include major: I go to Shoreland Lutheran High School. I'm thinking about University of Wisconsin and Agriculture.

How did you become interested in raising Suffolks? It was family tradition. Plus Suffolks are the best breed of all the sheep.

Why did you want to be on the UJSSA Board? Because I thought it would look good on a college application. But I really wanted to finally take a step up and represent the Junior Suffolk Sheep Assoc.

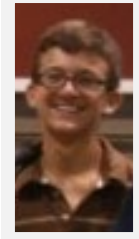
Outside of sheep activities, what other activities are you active in? For school, I play varsity soccer, freshman basketball, and varsity track.

Favorite Food: Pizza

Favorite TV Show: SportsCenter

Favorite Sheep Event: Probably my favorite sheep event would be the junior show in Louisville 2011.

Best Suffolk Memory: My favorite Suffolk Memory was last year at about this time, my dad and I decided which sheep were going down to Louisville, and it being my first year down there I didn't expect to do very well. But actually the Lord blessed me with Grand Champion Ram and Junior Champion Ewe. With only taking 3 down, with the other Ewe lamb taking 2nd. But it is hard to decide with this year at the 2012 National Junior Suffolk Show. Where I received both Supreme Champion Ram and Ewe (ewe was same as junior champ in Louisville 2011). Those were definitely my top 2 ever.



#1BreedintheLead



**GIVE A TURKEY A BREAK -
EAT LAMB THIS THANKSGIVING.**

Image from [Frederick County Sheep Breeders Association](#). Turkey artwork was developed by Holly Porter, Marketing Department, Mid-Atlantic Farm Credit.

Suffolks Today And Tomorrow Conference Commemorative Poster

Just a reminder...

CJ Brown of Lindenwood, Illinois, well known livestock artist, was on hand and was commissioned to do a commemorative poster highlighting "SUFFOLKS TODAY AND TOMORROW", which will be unveiled and auctioned at the Association's annual meeting at the North American International Livestock Show.

NOV. 16 DEADLINE FOR ANNUAL ASI AWARDS

The nomination period for the 2013 Awards Program is now open. All nominations must be postmarked no later than Nov. 16 to be considered.

The awards program allows producers and industry affiliates an opportunity to nominate individuals they feel have benefited the industry over the last year. Individuals who are selected to receive the awards are honored each year during the ASI Annual Convention.

Four awards are available for nomination

McClure Silver Ram Award: The McClure Silver Ram Award is dedicated to volunteer commitment and service and is presented to a sheep producer who has made substantial contributions to the sheep industry and its organizations in his/her state, region or nation. The award may recognize a lifetime of achievement or may recognize a noteworthy, shorter-term commitment and service to the industry. Nominees should be recognized as industry leaders with nominations spelling out the candidates' contributions to the industry and its producers. Producers should be actively involved in sheep production and may or may not produce sheep as their sole income. However, their nominations should not be based in any part on a paid position serving the sheep industry.

Camptender Award: The Camptender Award recognizes industry contributions from a professional in a position or field related to sheep production. Nominees should show a strong commitment and a significant contribution to the sheep industry, its organizations and its producers above and beyond that called for in his/her professional capacity. Nominees should be well respected in their fields by their peers and by sheep producers. Nominees may be involved with the industry as teachers, consultants, scientists, youth leaders, promoters, event managers, journalists or any other position directly related to the sheep industry, enabling the nominee to affect the sheep industry in a positive and long-lasting way. Nominees may be recognized for lifetime service to the sheep industry or may be recognized for a shorter-term commitment that resulted in significant benefits for the sheep industry.

Environmental Stewardship Award: The Environmental Stewardship Award recognizes individuals actively involved in sheep production who have shown an extraordinary commitment to caring for natural resources and thereby enhancing the environment. Nominees should exhibit a dedication to resource management and a commitment to sharing new techniques of management to preserve resources or improve flock management through natural resources.

Shepherd's Award for Media: The Shepherd's Award for Media recognizes outstanding yearlong coverage of the sheep industry in either print or broadcast. The award excludes all publications and affiliates related solely to the sheep industry, allowing for recognition of outlets with general coverage for excellence in covering sheep industry issues. Nominations may be publications, networks or specific reporters exhibiting a strong commitment to balanced reporting and consistent coverage of the sheep industry locally, statewide and/or nationally.

The 2013 Award Nomination Form is available [here](#).

Mail, fax or e-mail completed forms to:

Award Nomination, American Sheep Industry Association, 9785 Maroon Circle, Suite 360, Englewood, CO 80112

Fax: 303-771-8200

Email: judym@sheepusa.org

For additional information, contact the ASI office at (303) 771-3500.

Note that Past Award Recipients are not eligible for renomination.

(Continued from page 3)

The committee(s) I serve upon: By-Laws, Promotion, and the NAILE Suffolk Market Lamb Program.

Before you can look at the improvements to be made within the USSA you must evaluate and solve the problems the USSA has. Elect directors that will take a stand; believe in themselves, and not be so “wishy washy” and change their minds ever two seconds. Follow the By-Laws; they were adopted for a reason. Don’t be making changes in the By-Laws just because you’ve got a friend that would benefit from the change. These rules were made so that the USSA could function in an orderly fashion by following Roberts Rules of Order.

There is also too much discrimination in telling members what they should do, rather than asking them. Mandatory slick shearing is a good example. Right now we have the best of both worlds and plenty of classes for both slick and fitted Suffolks. This type of decision is a membership decision not a Board decision. We can’t afford to discriminate against members by forcing them to do something they don’t want to.

It is my personal opinion stronger restrictions should be placed on number of years you can be a Board member of the USSA. The USSA does not need professional Board members just so they can add it to their resume and brag on how many years they served as a Director of the USSA. Directors should be able to brag on what they have accomplished and not on what they haven’t accomplished. When you solve these problems then things can proceed in a positive direction and manner.

The biggest challenge for the USSA and the Suffolk breed is the direction production agriculture is taking. I wish I had a “crystal ball” and could give you all the answers but I can’t. This is also going to affect the rate of decline in numbers of Registered Suffolk sheep and members of the USSA. Things that also must be considered:

- Age of the members involved.
- Is it a hobby or a business?
- The cost of feed, facilities, equipment, and labor costs.

A Great Recipe for Ewe to Try!

Do you have a lamb recipe that is absolutely delicious and you want to share?
Do you have a child or junior that loves to cook? We’ll feature their recipes, too!
Please email it to news@u-s-s-a.org and it may be featured in an upcoming newsletter!

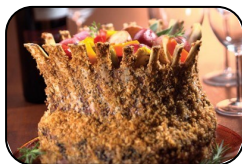


Festive Lamb Crown Roast with Oven Roasted Vegetables

Recipe from: [Superior Farms](#)

Ingredients

- 2 heads of garlic
- 2 Tbsp. olive oil, divided
- 2 Tbsp. butter
- 1 cup Panko bread crumbs
- 3 Tbsp. chopped herbs (rosemary, basil and thyme)
- 1 American Lamb crown roast, cap removed from ribs
- Salt and coarse ground pepper
- Oven roasted vegetables



Directions

1. Cut 1/2 inch off the tops of the garlic. Place in small metal pan and drizzle with 1 tablespoon oil. Roast in 375°F oven for 1 hour. Cool and squeeze soft garlic cloves into small bowl. Mash with remaining 1 tablespoon oil; set aside.
2. In small skillet, melt butter and add bread crumbs. Stir and cook until browned. Pour into bowl and mix in herbs. Place roast in roasting pan. Rub garlic mixture over outside of roast. Generously season lamb with salt and pepper. Pat on bread crumb mixture. Roast at 375°F for about 45 minutes or until desired degree of doneness. Remove roast from oven, pour roasted vegetables in center, cover and let stand for 10 minutes. Carve and serve 2 to 3 chops per serving.

Learning Opportunities

The following learning opportunities were found in the *ASI WEEKLY* electronic newsletter.

Sheep Webinar Audio Available

The webinar, Proper Feeding of Ewes During Breeding and Pregnancy, was held Tuesday evening, Aug. 28. More than 100 attendees participated in the session offered by the American Sheep Industry Association (ASI) in conjunction with its Rebuild the Sheep Industry initiative with funding support from the National Sheep Industry Improvement Center.

According to Rodney Kott, Ph.D., Montana State University and one of the presenters of the webinar, "There was a lot of interest expressed throughout the session and many great questions were asked. It was really exciting to see that much enthusiasm in the sheep business, making it a fun event to be a part of."

For anyone who was unable to participate, the full session is available for viewing from the home page of the ASI website, www.sheepusa.org.

2012 Wool Schools Scheduled in N.D.

A Sheep Shearing School and a Certified Wool Classing School are scheduled for Nov. 17-20 at the Hettinger Research Extension Center in Hettinger, N.D.

The focus of the schools is to provide the U.S. sheep industry with trained shearers and wool classers who can assist in improving the quality of the domestic wool clip, which is imperative to American wool becoming more competitive and available in the international as well as domestic markets.

The shearing school will cover the professional shearing pattern, tagging and eyeing, equipment maintenance and repair and wool handling and preparation.

Some of the topics to be covered in the classing sessions include wool fiber growth, objective measurement of wool, genetic selection programs, wool contamination, handling practices and packaging, labeling and marking. To fine tune the skill of wool classing, students will be given the opportunity to work through and grade a number of wool samples.

Each course will run from 8 a.m. to 5 p.m. daily. The cost of the classing school is \$175 per student and includes tuition as well as all supplies, manuals and a wool handling DVD. Class size is limited to 12.

Included in the \$125 instruction fee for the shearing school are the tuition, handbook, DVD and singlet. The class is limited to 20 students of any experience level. A total of \$250 in scholarships is available to be split among North Dakota residents who are 16 years of age or older.

Additional information for either course can be obtained by contacting Christopher Schauer at christopher.schauer@ndsu.edu or by calling 701-567-4323.

The courses are being sponsored by the American Sheep Industry Association, the North Dakota State University Hettinger Research Extension Center, North Dakota Lamb and Wool Producers Association and the North Dakota State University Extension Service.

Wisc. Offers Beginning Sheep Shearing School

The annual Beginning Sheep Shearing School will be held on Dec. 1-2 at the University of Wisconsin (UW)-Madison Sheep Unit within the Arlington Agricultural Research Station. The school will cover basic shearing skills including sheep handling, shearing positions, wool handling and equipment care and maintenance.

The cost to attend the training program will be \$75 per participant, which includes the necessary equipment.

The school is organized by the Department of Animal Sciences at the UW-Madison, Cooperative Extension, UW-Extension and the Wisconsin Sheep Breeders Cooperative.

For more information or to register, call 608-846-5858. The registration deadline is Nov. 1.

Sheep Management Tips - Late Fall

Dr. Scott P. Greiner, Extension Animal Scientist, VA Tech

Re-printed from [Virginia Cooperative Extension](#)

Breeding to 6 Weeks Before Lambing

1. Mature ewes in average to good body condition should be fed to maintain or slightly increase their body-weight during the first 3 ½ months of gestation. This is the time to take advantage of lower quality pasture. If this period occurs during the winter, hay will normally supply the necessary nutrients, with no supplemental grain required.
2. Thin ewes should be fed separately and supplemented with 1 to 1.5 lbs of grain per day to gain 10 to 15 lbs by 6 weeks before lambing.
3. Pregnant ewe lambs should be fed separately from mature ewes. They should gain approximately 25 lbs from breeding to 6 weeks before lambing. Attempts to cause large weight gains in ewe lambs during late gestation may lead to lambing problems. Conversely, underweight ewe lambs and/or poor body condition have low birth weight lambs and poor survivability and lower milk production.
4. If pregnant ewes are to be brought into the flock, keep these ewes separate from the main flock through lambing when feasible. This will diminish the risk of introducing abortion and other diseases into the main flock. Consult with your veterinarian regarding health management protocols for these newly received ewes.
5. Shear ewes if facilities are available to shelter ewes appropriately during winter months.
6. Test hay for nutrient content to facilitate proper and economical diet formulation.

6 Weeks Before Lambing

1. Start feeding 0.5 lb of grain per head daily as a preventative for pregnancy disease. Grain may be in the form of whole shelled corn or barley. Even if ewes are on good quality pasture, they still require the extra grain. During the winter or when on poor quality pasture, feed approximately 4 lbs of hay in addition to grain.
2. Supplementation of tetracycline pre-lambing has been shown to reduce the incidence of abortions. Consult with your veterinarian on a flock health management protocol.
3. Make sure there is plenty of feed trough space so that ewes do not crowd each other at feeding time.

4 Weeks Before Lambing

1. Shear the wool from around the head, udder and dock of pregnant ewes. If covered facilities are available, shear the ewes completely. Sheared ewes are more apt to lamb inside, facilities stay drier because less moisture is carried in by the ewes, sheared ewes require less space, and environment is cleaner for newborn lambs and the shepherd. Sheared ewes must have access to a barn during cold, freezing rains, and they must receive additional feed during periods of extremely cold temperatures.
2. Vaccinate ewes for overeating disease and tetanus. These vaccines provide passive immunity to baby lambs through the ewes' colostrum until the lambs can be vaccinated at 4 to 6 weeks of age.
3. Check and separate all ewes that are developing udders or are showing signs of lambing. Check and remove heavy ewes once a week during the lambing season. Increase the grain on all ewes showing signs of lambing to 1 lb daily, and feed all the good quality grass/legume hay they will clean up.
4. Observe ewes closely. Ewes that are sluggish or hang back at feeding may be showing early signs of pregnancy disease. If so, these ewes should be drenched with 2 ounces of propylene glycol 3 to 4 times daily.
5. Shelter ewes from bad weather.



Looking for the following to include in the Suffolk Newsletter:

Photos, news, events, recipes, helpful hints & tips, educational opportunities and questions for the question and answer section! Or anything else you would like to share!

USSA Member News

If you have any news to share, please let our office know so we can include it in our newsletter.

Our Condolences to the following Suffolk families:

Fina Kinne, Jr., 78, Hamilton, Missouri, passed away on October 23, 2012, at Heartland Regional Medical Center in St. Joseph, Missouri.

Fina was born on April 2, 1934, in Hamilton, to Fina Kinne, Sr., and Lennis Frances Royer. He was a 1951 Penney High School graduate. He had lived in Hamilton all of his life and had been a farmer.

Fina was a member of the Hamilton Federated Church, a past member of the Hamilton R-II School Board, past member of Young Farmers, and he was an avid Penney High School booster and sports fan. He attended the Missouri State Fair each year showing sheep, and had just received, along with his family, a 40-year Sheep Show honor and presentation plaque.

Fina was preceded in death by his parents; brother, Don Kinne; and sister, Doris Bothwell.

On September 28, 1952, Fina married Nathaleen Spidle in Breckenridge, Missouri, as the United Methodist Church. They had just celebrated their 60th wedding anniversary. Nathaleen survives of the home.

Additional Survivors: Daughter, Pam (Bill) Englert, Hamilton; Daughter, Linda (Jerry) Wilson, Kidder; Son, Keith (Shelly) Kinne, Eagleville; 11 grandchildren-Scott Englert, Kansas City, Missouri; Sara Lasher, Hamilton; Sandra Beth Steggall, St. Joseph; Shawn Englert, Hamilton; Jenny Hill, Chillicothe, Missouri; Clint Wilson, Liberty, Missouri; Lucas Wilson, Kidder; Jeremy Kinne, Hamilton; Zachary Kinne, Washington, DC; Shane Kinne, Ashland, Missouri; and Sadie Kinne, Eagleville; 11 great-grandchildren; and a Sister, AdaLee Clark, Kansas City, Missouri.

Memorials can be directed to The Hamilton Federated Church.

Nathaleen's address is 4406 NE Sunset Rd, Hamilton, MO 64644.

The Kinne Family was the 2012 Missouri State Fair Sheep Family and had exhibited Suffolk Sheep and Market Lambs for many years at the fair.



American Lamb Board Announces Changes To 2013 Grant Programs

The American Lamb Board (ALB) kicks off its new fiscal year with changes to its fiscal year 2013 industry outreach cooperative funding programs. The board's Industry Matching Grant Program has been replaced by an Annual Sponsorship Program. \$20,000 will be available annually to support local lamb events, fairs and festivals to help offset the cost of lamb for sampling and demonstrations, event advertising and publicity, promotional materials, etc. Applications will be due in January 2013.

ALB has also approved an increase to the Supplier Co-op Program budget from \$60,000 to \$80,000 to help American lamb suppliers and direct marketers develop and implement branded retail, foodservice or consumer promotions. The funding cycle will remain the same for this program with applications due for the first round on Oct. 31 (\$40,000 available), and the second round on April 30, 2013 (\$40,000 available). This program requires a dollar for dollar match.

"Both programs are designed to expand ALB's efforts to promote American lamb and further the goals and objectives of ALB's strategic plan," said ALB Chairman Nick Forrest. "We look forward to working with industry partners in 2013 to support promotions and events that help the industry build demand for American lamb."

For more information about the programs and for a copy of the ALB's Strategic Plan, visit www.lambcheckoff.com.

Calendar of Events

Have a Suffolk related event you would like to add to the calendar of events? Email your event to: news@u-s-s-a.org. The newsletter may not contain all upcoming events. To find a full listing, please visit our website: www.u-s-s-a.org.



November

10 NAILE Suffolk Sale - Louisville, KY - 3:30 pm

12 NAILE Open Suffolk Show, Louisville, KY—8 am

USSA Annual Meeting, Louisville, KY—45 min. following the conclusion of the Suffolk Show

***** SEE PAGE 17 OF THE NEWSLETTER TO FIND A MORE DETAILED LISTING OF NAILE EVENTS *****

24 Illini Bred Ewe & Ewe Lamb Sale - Bloomington, IL—Breeding Stock, Wether Sires & Dams

January

23-26 American Sheep Industry Association/National Lamb Feeders Association Annual Convention, San Antonio, TX. www.sheepusa.org

NAHMS Study Released

Source: American Sheep Industry Association, sheepusa.org

The U.S. Department of Agriculture's Animal and Plant Health Inspection Service's National Animal Health Monitoring System (NAHMS) has released the first part of its 2011 study entitled Part 1: Reference of Sheep Management Practices in the United States, 2011.

The study provides baseline information on U.S. sheep inventories, health and management practices, productivity, marketing, nutritional management and disease prevention.

The study was conducted in 22 states representing 70 percent of the U.S. sheep flocks and 85 percent of the U.S. sheep.

The NAHMS report can be accessed at www.aphis.usda.gov/animal_health/nahms/sheep/index.shtml.

ATTENTION STATE AND REGIONAL SUFFOLK ASSOCIATIONS!

Do you have news, events, meetings, etc. that you would like to share with other Suffolk Enthusiasts?

Information can be shared in the next newsletter — please email the information to news@u-s-s-a.org !



Suffolk Social



Please attend the NAILE Suffolk Social. The social will be hosted by and located at Ruby Mountain Sheep Co.'s (Cynthia Huckins) pens on the evening of Sunday, November 11th (time to be announced). Hope you can attend! Stop by for some snacks and drinks while catching-up with your Suffolk friends!

FLOCK CALENDAR OUTLINE

NDSU [Hettinger Research Extension Center](#)
Article from 2010 Sheep Research Report

The following guidelines are neither inclusive nor intended to fit every sheep operation. Each operation is different, therefore, each “calendar event” should be tailored to each flock’s needs.

PRIOR TO BREEDING

1. Bag and mouth ewes and cull those that are not sound.
2. Replace culled ewes with top-end yearlings or ewe lambs.
3. Keep replacement ewes lambs on growing rations.
4. Evaluate sires:
 - A. Be sure they are vigorous, healthy and in good breeding condition.
 - B. Rams should be conditioned at least a month before breeding season. Flush rams in poor condition.
 - C. Allow at least two mature rams (preferably three) or four buck lambs per 100 ewes.
5. Flush ewes:
 - A. One pound grain/day two to five weeks before breeding (usually 17 days).
 - B. If ewes are over-conditioned, the effect of flushing will be lessened.
6. Vaccinate ewes for vibriosis and enzootic abortion (EAE).
7. Identify all ewes and rams with ear tags, paint brands or tattoos.

BREEDING

1. The ovulation rate of a ewe tends to be lower at the first part of the breeding season. Vasectomized or teaser rams run with ewes through the first heat period tend to stimulate then and increase the ovulation rate at the second heat period.
2. Use a ram marking harness or painted brisket to monitor breeding. Soft gun grease with a paint pigment mixed in works well for painting the brisket. A color sequence of orange, red and black is recommended with colors being changed every 17 days.
3. Leave rams in NO LONGER than 51 days (35 days is more desirable).
 - A. An exception may be with ewe lambs. Allowing them four cycles or 68 days may be beneficial.
4. Remove rams from ewes after the season (don’t winter rams with ewes).

PRIOR TO LAMBING (First 15 weeks)

1. Watch general health of ewes. If possible sort off thin ewes and give extra feed so they can catch up.
2. Feed the poor quality roughage you have on hand during this period, saving better for lambing.
3. An exception to the above is feeding pregnant ewe lambs. They should receive good quality roughage and grain (about 20 percent of the ration) during this period.

LAST SIX WEEKS BEFORE LAMBING

1. Trim hooves and treat for internal parasites.
2. Six to four weeks before lambing feed 1/4 to 1/3 pound grain/ewe/day.
3. Shear ewe before lambing (with highly prolific ewes at least a month before is preferred). Keep feeding schedule regular and watch weather conditions immediately after shearing (cold).
4. Vaccinate ewe for enterotoxaemia.
5. Control lice and ticks immediately after shearing.
6. Four weeks before lambing increase grain to 1/2 to 3/4 pound/ewe/day (usually done immediately after shearing).
7. Give A-D-E preparations to ewes if pastures and/or roughage are or have been poor quality.

(Continued on page 15)

8. Feed selenium-vitamin E or use an injectable product if white muscle is a problem. Caution DO NOT use both.
9. Check facilities and equipment to be sure everything is ready for lambing.
10. Two weeks before lambing increase grain to 1 pound/ewe/day.

LAMBING

1. Be prepared for the first lambs 142 days after turning the rams in with the ewe, even though the average pregnancy period is 148 days.
2. Watch ewes closely. Extra effort will be repaid with more lambs at weaning time. Saving lambs involves a 24-hour surveillance. Additional help at this time is money well spent.
3. Pen a ewe and lambs in lambing pen (jug) after lambing, not before.
4. Grain feeding the ewe during the first three days after lambing is not necessary.
5. Be available to provide assistance if ewes have trouble lambing.
6. Disinfect lamb's naval with iodine as soon after birth as possible.
7. Be sure both teats are functional and lambs nurse as soon as possible.
8. Use additional heat sources (heat lamps, etc) in cold weather.
9. Brand ewes and lambs with identical numbers on same side. Identify lambs with ear tags, tattoos or both.
10. Turn ewes and lambs out of jug as soon as all are doing well (one to three days).
11. Bunch up ewes and lambs in small groups of four to eight ewes and then combine groups until they are a workable size unit.
12. Castrate and dock lambs as soon as they are strong and have a good start (two days to two weeks of age). Use a tetanus toxoid if tetanus has been a problem on the farm (toxoids are not immediate protection, it takes at least ten days for immunity to build).
13. Vaccinate lambs for soremouth at one to two weeks of age if it has been a problem in the flock.
14. Provide a place for orphaned lambs. Make decision on what lambs to orphan as soon after birth as possible for best success. Few ewes can successfully nurse more than two lambs.

END OF LAMBING TO WEANING

1. Feed ewes according to the number of lambs sucking. Ewes with twins and triplets should receive a higher plane of nutrition.
2. Provide creep feed for lambs (especially those born during the winter and early spring).
3. Vaccinate lambs for overeating at five weeks and seven weeks of age.

WEANING

1. Wean ewes from lambs, not lambs from ewes. If possible, remove ewes from pen out of sight and sound of lambs. If lambs have to be moved to new quarters, leave a couple of ewes with them for a few days to lead the lambs to feed and water locations.
2. Lambs should be weaned between 50 and 60 days of age when they weigh at least 40 pounds and are eating creep and drinking water. The advantage of early weaning is that the ewe's milk production drops off to almost nothing after eight weeks of lactation.
3. Grains should be removed from the ewe's diet at least one week prior to weaning and low quality roughage should be fed. Restriction of hay and water to ewes following weaning lessens the chance of mastitis to occur. Poorer quality roughage should be fed to the ewes for at least 10-14 days following weaning.
4. Handle the ewes as little as possible for about 10 days following weaning. Tight udders bruise easily. If possible, bed the area where the ewes will rest heavily with straw to form a soft bed for the ewes to lay on.

(Continued on page 16)

WEANING TO PRE-BREEDING

1. If ewes go to pasture, treat for internal parasites.
2. Feed a maintenance ration to the ewes. Put ewe lambs that lambed back on a growing ration once they have quit milking.
3. Adjust ewes condition so they can be effectively flushed for next breeding season. Don't get ewes too fat prior to breeding.

REARING LAMBS ARTIFICIALLY (ORPHANS)- MANAGEMENT TIPS

Within 2 to 4 hours after birth, decide which lambs among those from multiple births you should remove. Look for the weaker, or smaller ones to choose for artificial rearing. It is important to make the decision early.

Relatively weak lambs remaining with ewes can experience more stress than those reared artificially.

Consider the following tips:

- It is essential that newborn lambs receive colostrums milk. Cow's colostrums will work if ewe's milk is not available. Do not dilute with water or warm too quickly if colostrums is frozen.
- Lambs should be removed from sight and hearing distance of ewes.
- Provide a warm, dry, draft-free area to start lambs.
- Use a good milk replacer that is 30% fat and at least 24% protein. Each lamb will require from 15 to 20 pounds of replacer to weaning.
- Lambs may require some assistance the first day or two to teach them to nurse on whatever feeding device is used.
- Start on nurser quickly, young lambs start easier.
- Self feed cold milk replacer after lambs are started. Milk replacers should be mixed with warm water for best results and then cooled down. Lambs feed cold milk well with less problems from scours and other digestive disturbances. Cold milk keeps better too.
- There is a Formaldehyde solution commercially available that retards bacterial growth in milk (1cc/gallon milk).
- Hang a light over the milk replacer feeding device and dry ration feeder.
- Avoid placing young lambs with older lambs, as they may be pushed aside and may not be able to obtain the milk replacer. Remember that lambs nursing ewes drink 25 to 40 times per 24 hours. Best results have been obtained when lambs are fed in groups of 3 to 4 initially. After lambs are successfully trained, they can be handled in groups of 25.
- Inject lambs in the first few days with Iron Dextran, Vitamin A-D-E, and Selenium Vitamin E. At 15 days of age, vaccinate for overeating (*Colostridium perfringens* type C & D).
- Provide lambs with a high-quality creep feed as soon as possible. Provide ample fresh water in front of lambs at all times. Do not feed hay or oats the first three weeks after weaning, as it encourages bloat. Caution! Do not feed leafy alfalfa until two weeks after weaning, as it encourages bloat.
- Wean lambs abruptly at 21-30 days of age. When to wean depends upon whether lambs are eating creep feed and drinking water. Newly weaned lambs will go backwards for several days. Don't be alarmed, they will make compensating gains later on.



A Guide to All Things Sheep©

By Premier1Supplies

A new resource for sheep breeders and producers—check it out: <http://www.premier1supplies.com/sheep-guide/>

2012

NORTH AMERICAN INTERNATIONAL LIVESTOCK EXPOSITION

USSA Calendar of Events for NAILE

Wednesday, November 7 -

Open Show Arrival (Until Nov. 9, 6pm)
Junior Show Arrival (Until Nov. 9, Noon)

Friday, November 9 -

Lead Line at 1pm
Market Lamb & Jr. Breeding Showmanship at 5pm
Market Lamb Momma Sale 7pm

Saturday, November 10 -

Jr. Wether Show at 8am
UJSSA Pizza Party at noon
Suffolk Sale at 3:30pm
UJSSA Board Meeting at 6pm
USSA Board Meetings - immediately following
UJSSA meeting

Judges for NAILE Suffolk Shows

Junior Wether Show — Marvin Ensor, San Angelo, TX

Junior Breeding Show— Ryan Hendricks

Open Show— Slick: Billy Wade, Salem, OR

Fitted: Gary Saylor, Belle Center, OH

Open Show Entry Fees

NAILE Open Show Participants -

Just a reminder that the entry fee of \$5 per head needs to be paid to the USSA prior to the events at NAILE, for those who do not pay, will be prohibited from participating. If the entry fee is collected at NAILE, the entry fee will increase to \$10 per head.

NAILE Market Lamb Show – Suffolk Division

Again this year, but a little revised, the USSA will be providing special monies to UJSSA members showing Suffolk market lambs at the 2012 NAILE Market Lamb Show.

The USSA will award \$1000 to the Champion Suffolk Market Lamb, \$500 to the Reserve Champion Market Lamb, and within each Suffolk Market Lamb Class, \$50 for 1st place and

\$25 for 2nd place. To be eligible for this prize money, each Suffolk market lamb, at the time of weigh-in and classification, will be required to have a Suffolk Market Lamb Certificate. Certificates may be obtained from the USSA office (P.O. Box 995, Ottumwa, IA 52501) or at the time of classification.



Sunday, November 11 -

Junior Show - Ring 1 (North) following Dorsets
Suffolk Social (evening) —located at Ruby Mountain Sheep Co. pens

Monday, November 12 -

Open Suffolk Show at 8am
USSA Annual Meeting: 45 minutes following conclusion of the Open Suffolk Show

Friday, November 16-

Supreme Champion 11am
Suffolks Released at 3pm

**Stop by the USSA/UJSSA Booth
for further details on board
meeting dates and locations!**

This award money will only be available to individuals whom:

(1) Pay for a United Junior Suffolk Sheep Association (UJSSA) Membership at the rate of \$15 or are a current UJSSA member

AND

(2) Purchase a wether certificate from the USSA at the rate of \$10 per lamb.

**United Suffolk Sheep
Association**

PO Box 995
Ottumwa, IA 52501

Phone: 641-684-5291

Fax: 641-682-9449

E-mail: news@u-s-s-a.org

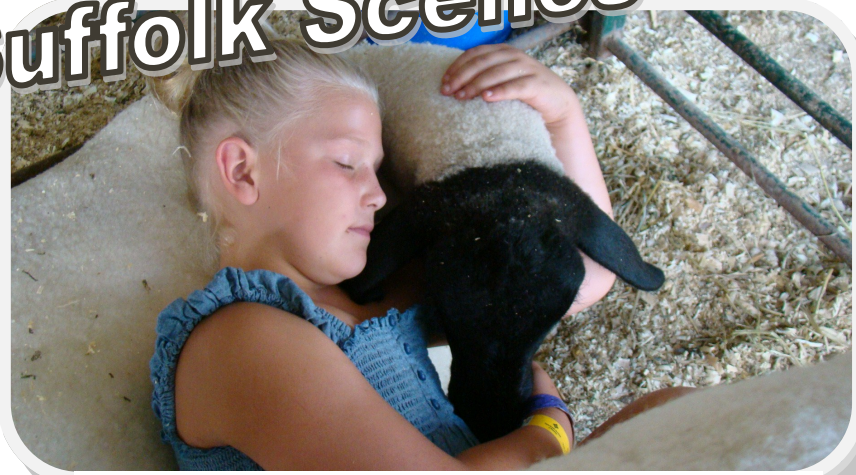


"The Breed in the Lead"

We're on the Web!

www.u-s-s-a.org

Suffolk Scenes



Submitted By Carol Harder, Harder Suffolks, Mtn Lake, MN

Annual Meeting

Monday, Nov. 12th

45 minutes following the conclusion of the Open Suffolk
Show

NAILE in Louisville, KY

Members are encouraged to attend the 2012 United Suffolk Sheep Association Annual Meeting held at NAILE in Louisville, Kentucky on Monday, November 12th beginning 45 minutes after the conclusion of the Open Suffolk Show in South Wing Conference Center "B" – 102 . For meeting location, please stop by the USSA booth in Louisville for further details.

Classified Ads

USSA Members only. Ads are free. Must be sheep related: animals, vehicles, trailers, equipment, transportation, working dogs, etc. Include your contact information. Email you ad to: news@u-s-s-a.org. The newsletter may not contain all of the classified ads or include photos that are posted with the classified ad. To find a full listing, please visit our website: www.u-s-s-a.org.

FOR SALE: March born ram lamb. He is out of a Burke ram and a Foster ewe. He placed 5th at the Missouri State Fair in August. Located in Marshall, Missouri. Photos of ram can be found on the USSA website. \$400 OBO. Chris Mallett, 660-216-6898

Have a sheep related item to sell?

It could be listed here!

There are many more ads posted on the USSA website!

Check out the USSA Facebook page!



Office Notes

USSA /UJSSA Membership Drive



The goal of this program is to recruit new members or encourage past members who have been inactive to rejoin the USSA or UJSSA.

Details for USSA members: Any senior member of the USSA is eligible to participate in the Membership Drive. If a senior member signs up 5 new senior members, they will receive a \$35 account credit through the USSA. If a senior member signs up 10 new senior members, they will receive an \$85 account credit through the USSA.

Details for UJSSA members: Any junior member of the UJSSA is eligible to participate in the Membership Drive. If a junior member signs up 5 new junior members, they will receive a \$15 account credit through the USSA. If a junior member signs up 10 new junior members, they will receive a \$40 account credit through the USSA.

To insure you get credit, remind your recruits to communicate to the office who encouraged them to join the USSA or UJSSA. For more details, please contact the USSA Office. Let's promote the USSA and UJSSA and registered Suffolks!

What would you like to see in this publication?

If you have any ideas or items you would like to see in this newsletter, send us your input! Or, if you have any news stories, results, photos you would like to share with the rest of the United Suffolk Sheep Association let us know! Items you would like to submit to the newsletter can emailed to: news@u-s-s-a.org

We Want Your Photos!

We would like to feature some photos in each of our newsletters of our members and their Suffolks! Whether you have old or new photos, all are welcome. We would also like to use some member photos for promotional materials. If you would like to submit photos, you can mail them to the office address, P.O. Box 995, Ottumwa, IA 52501, and then we can return them to you after we scan them. You can also email any photos to news@u-s-s-a.org. We look forward to seeing all your photos!

Website

If you have any information you would like included on our website, please let us know. We also welcome any ideas you may have to improve our website.

USSA Suffolk Window Clings and Limited Edition Suffolk Sculptures are available for purchase!

Window Clings are \$1 each and sculptures are \$195 per sculpture.

Both prices include shipping!

Contact the office if you are interested in purchasing .

