

# Suffolk Newsletter

## The United Suffolk Sheep Association

### Welcome Spring!

As the hustle and bustle of the summer approaches, I wanted to include some friendly reminders when it comes time to get your registration work sent to the office-

- Give yourself plenty of turn around time. Once papers are received in the office there can be up to a two week processing time depending on workload. If papers are need by a certain date, please indicate date needed. If papers are needed in 14 days or less from postmark date, there will be a rush fee applied (\$5 per head). The office intends to process work in a quick efficient matter but during the height of the registration time, a slower turnaround time should be expected.
- Double check your lamb's information – flock number (ear tag), sire & dam registration numbers and flock numbers, birth type and birth date.
- Print legibly – If you want to type your registration applications, there are Excel documents available on the website that you can type in the necessary information, save a copy for your records then email, fax or mail it to the office.
- For percentage sheep, please use an application for percentage registrations or, if you do not have a percentage form, please indicate the animals that are percentage registrations.
- Please include a breeding certificate if needed.
- For transfers, be sure to include a date of sale.
- If you would like to have transfers sent to the new owner, please include that on the submitted documents.
- Please indicate if flock copies are needed (\$1/head).
- All work orders should include \$3 for postage, shipping and handling.
- Don't forget to include a daytime phone number or email that you can be contacted at if there are questions at the time of registration processing.
- If you have not paid your 2013 membership dues, you can submit that with the work you send in.
- Payment is required at the time of submission. Accepted forms of payment include check, credit card or PayPal (there's a direct link to PayPal on the USSA website homepage).
- If you plan to fax applications, please make sure they are legible.

April 2013

Volume 4, Issue 2

### Inside this issue:

Member Spotlight	3
Notes from the UJSSA	7
UPDATE: USSA Futurity Program	9
Suffolk Associations Close to Home	10
Sheep Industry Updates of Interest to Ewe	12
Calendar of Events	14
Member News	15
Total Sheep and Lamb Inventory Down 1 Per- cent	16
Learning Opportunities	18
Classified Ads	20
Sheep Resources	22

*Amanda Events*

### Welcome!

...new members, returning past members (whom have not been active in recent years)  
and past UJSSA members who have joined the USSA during March 2013.



- ◆ Brian & Carol Harder, Mountain Lake, MN
- ◆ Shawn O'Donovan, Waupun, WI
- ◆ Bret, Lori, John, Joe & Jackie Oelke and Jessica & Paul Haskamp, Barrett, MN
- ◆ Daniel Perry, Springville, IN
- ◆ John Richards, Bentonville, VA
- ◆ Clint & Angela Wallisch, Janesville, WI
- ◆ Seth Wengert, Clemons, IA

# USSA BOARD OF DIRECTORS

## Officers

### **President:**

**Rob Zelinsky** (District 2)  
Brookings, SD  
605-354-8248  
robzelinsky@yahoo.com  
(Exp. 2014)

### **Vice President:**

**Bill MacCauley** (District 4)  
Atglen, PA  
Home: 610-593-2907  
Cell: 610-256-1608  
billmac@johnrock.com  
(Exp. 2013)

### **Treasurer:**

**Rex Quam** (District 3)  
Wanamingo, MN  
Home: 507-824-2248  
Cell: 507-251-2650  
rjqquam@frontiernet.net

## District 1

**Donna Mays** (Exp. 2014)  
Howe, ID  
208-767-3405  
lostriverdm@yahoo.com

**Larry Pauly** (Exp. 2013)  
Delta, UT  
435-864-2777  
l\_pauly@msn.com

**Keith Pumphrey** (Exp. 2015)  
Walla Walla, WA  
509-529-0140  
jkpumphrey@hotmail.com

## District 2

**Virginia Gergen** (Exp. 2015)  
Lincoln, NE  
402-477-7333  
veegergen@yahoo.com

**Amanda Bergsieker** (Exp. 2013)  
Waverly, MO  
660-232-1433  
ab\_vettech@yahoo.com

## District 3

**Kim Ketcham** (Exp. 2013)  
Edwardsville, IL  
Home: 618-656-5388  
Cell: 618-581-3554,  
kimketcham@hotmail.com

**Paul Skartvedt** (Exp. 2015)  
Radcliffe, IA  
515-450-1302  
skarby67@yahoo.com

## District 4

**Diane Russell** (Exp. 2015)  
Eaton, IN  
765-288-4845  
farmer1224@hughes.net

**Lisa Webster** (Exp. 2014)  
Windham, ME  
Home: 207-892-2161  
northstarfarms@me.com

## UPDATED BYLAWS

All proposed USSA ByLaw amendments have been approved by a vote of the membership on Nov. 1, 2012. To view updated USSA ByLaws, visit the USSA [website](#) or view in the 2013 USSA Directory.



## Question & Answer

Do you have a question for the USSA or Board of Directors?  
If so, please email it to [news@u-s-s-a.org](mailto:news@u-s-s-a.org)!

**Question:** When registering my 2013 lambs, if I know the Scrapie and/or Spider DNA information for the lambs can I have it included on the registration paper?

**Answer:** Yes, you can have that information listed on the registration paper. Just list the information behind the flock number on the registration application. If sheep are tested after the registration paper has been created, the information can be added to the certificate. If requested, a new certificate, which has that information included can be purchased for \$5 per certificate.

## **Be sure to mark your calendars for:**

### **2013 National Suffolk Show and Sale • May 30—June 1**

Held during the Nugget All-American Invitational All-Breeds Sheep Sale, Sparks, NV

For more information visit: [www.bannersheepmagazine.com](http://www.bannersheepmagazine.com)

### **2013 UJSSA National Junior Suffolk Show • July 4-7**

On the Michigan State University Campus, East Lansing, MI

For more information visit: [www.ujssa.org](http://www.ujssa.org)

# USSA MEMBER SPOTLIGHT



Bob & Barb Kimm

## ROBERT KIMM – KIMM SUFFOLKS

DYSART, IOWA

**How long have you raised Suffolks?** 41 years

**What/Who inspired you to raise Suffolks?** In the early seventies I wanted to be competitive at the National Lamb Show (a show combining rate of gain, live placing and carcass merit). Richard Roe, an Iowa Suffolk breeder gave me advice and leased me a ram he had bought from another Iowa breeder, Bob Lewis. This ram had won the IA Ram Test and I went on to buy this ram from Richard. The ram, RoEl 600, sired six champion progeny pen's of five plus several individual champions at the NLS for me from 1974 through 1979, he lived to be nine years old and was the foundation sire for my flock. I entered several of this ram's sons in the Iowa Ram Test, with great success as well. It was all this plus my good friends in the beef industry (who I met through my teaching career) that inspired me to really take breeding Suffolks with performance traits seriously.

**Discuss the marketing of your Suffolks.** In the seventies and early eighties I sold everything private treaty off the farm. When prospective buyers arrived I handed them a spreadsheet with the animals for sale, along with this data was the price I was asking. I never liked going to a farm to buy a ram and be offered NO INFORMATION plus once I picked my choice THEN I was told the price. In 1988 I held my first annual production sale at the farm. In 2010 I moved the sale location to the Kirkwood Comm. College Campus in Cedar Rapids, IA. I offer approx. 100 females and 70 rams on sale night, plus I sell an additional 20-30 rams private treaty during the summer. I believe in offering the buyer as much information as possible such as NSIP epd's, 60 day adjusted weaning weights, current weight, REA, BF and a two-generation pedigree, all included in the night of sale catalog. I also offer birth weights if the buyers request. I usually consign to the Center of the Nation NSIP Sale in early August.

**Currently, how many Suffolks do you own?** I own 200 registered Suffolk ewes, maintaining 65-70 brood ewes between two satellite flocks and the home base at Dysart. Plans are to add an additional satellite flock in 2014.

**What are the benefits of registering your Suffolks?** When working with genetics, I feel you need to know the true lineage to make meaningful matings. Assuming the registration papers you are working with are HONEST, what better tool could be at your disposal and one you can pass on to the buyers as a permanent record. I personally feel the sheep breeds needs to add performance information to their pedigrees such as the beef, swine and dairy breeds.

**What is one of your fondest memories related to Suffolks?** There are many and I would like to share a few. I currently do not show but can understand how it drives many in the business. Back in the seventies when I was



Bob's first 4-H lamb project in 1960.



Ro El 600—First Suffolk ram purchased by Bob in 1973.



One of six champion pen of 5 at the National Lamb Show sired by Ro El 600.

(Continued from page 3)

doing well at the National Lamb Show, those were FUN TIMES. Later my son showed numerous State Fair 4-H Champion Suffolk Ewes in the eighties along with my daughter participating in Ladies Lead at the St. Fair with our ewes. Those were very fond memories allowing me to working with my family. I also enjoyed working with the Iowa youth, establishing the Iowa Jr. Suffolk Assoc. in the eighties, holding a state show, taking the kids on fall weekend producer tours to adjoining states and working with them to compete at the National Jr. Suffolk Show in the quiz bowl. But during the past two plus decades, holding successful sales and having buyers share their appreciation for what my genetics has meant to them is most rewarding along with awarding youth who attend my sale and take a quiz, credit to purchase from the consignment.

**What is something you have gained from raising Suffolks?** To enjoy the fruits of my labor on sale night when the offering is well received, but most of all the great FRIENDS I have made in the process. I am blessed with a great family of the LOYAL customers.

**What improvements could be made within the USSA to benefit its membership, gain new members and/or retain its current members?** In a nut shell; TAKE THE WOOL OFF and open the books to recapture so many of the flocks that dropped their papers when moving toward the club lamb side of the equation. Many would say this would create a breed of MONGROLS, lets be serious: Is this breed or any of the breeds we have papered today PURE? It also would not hurt our cause if we concentrated on breeding a more user-friendly animal. If the breed, first and foremost, does not serve the best interest of the commercial producer then its only purpose is for SHOW. EXTREMES, in my opinion, are not the answer and should not be the FACE of the breed.

**Discuss one major challenge facing the USSA or Suffolk breed.** The previous question covers the challenges we face, we have lost many breeders to the club lamb side, were papers do not matter plus currently another black faced breed has gained great momentum, taking even more of our youth away from the Suffolk breed. The youth of today, for the most part, do not have the time or interest to learn the ART of FITTING but if the family involved have the money, then they can participate by hiring a professional.

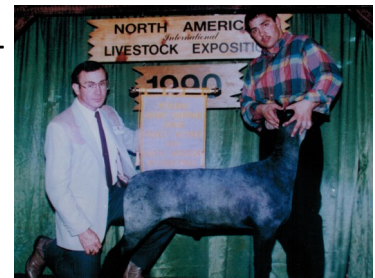
**Any other general comments you would like to share?** The Suffolk breed has many fantastic traits, namely MUSCLE and GROWTH. We need to promote these along with the breed's great MATERNIAL talents. Concentrate on selecting for SOUND, STRUCTUALLY CORRECT, EASY FLESHING animals with good Suffolk breed character that can FUNCTION on forage and LIVE past two years of age!



An Iowa Jr. Suffolk tour in the late 80's to Mary Ann Nipps, NE.



Bob's son Ted and daughter Flo.



Bob has judged most all the major Jr. Market Lamb shows in the U.S.



The ram that in recent times has made his mark on Bob's program, McLaughlin 0038



Bob's three grand kids, Ivy, Lily and River

# A Message From the UJSSA President...

Dear Suffolk Juniors,

Here in the Midwest we have been hit with some pretty large winter storms. We are finally seeing signs of spring. I like many others are hoping winter is over and everything it brings with it.

By the time you read this, I hope that you have your eye on several lambs that you are hoping to show or raise or sell this coming spring or summer. Spring is an exciting time for juniors.

If you haven't been to a National Junior Show, or you haven't been in several years, we sure hope you will plan to spend the 2014 Fourth of July with other Suffolk families in East Lansing, Michigan! As always, if you have any questions at all, please contact any Junior Director---we would be happy to help you find transportation, or answer any show, ownership or entry questions you may have

Wishing you all the best as your lambs grow and you look forward to the summer show season!

Respectfully Submitted,

Taylor Wolff

## QUAM SUFFOLKS & HAMPSHIRE 8th Annual On Farm Sale April 20

Viewing From  
10 AM - 1 PM

If you are unable to attend, we can have someone on the phone with you that day

[www.quamsuffolksandhampshires.com](http://www.quamsuffolksandhampshires.com)

Sale Begins  
1 PM  
Delivery to Ohio  
is available.



**Champion Ram, 2012 Iowa State Fair**  
Sold half interest to Schoelerman Suffolks  
Also 3rd at Louisville after breeding 50 ewes

**All of these sold in last years sale!**

Videos, pedigrees, & base prices will be on our website by April 9th

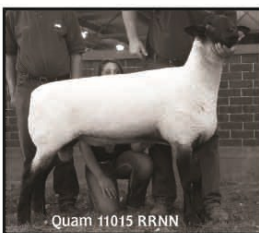


Schoelerman Suffolks, IA, 3rd Fall Ram Lamb, NAILE, 1st Fall Ram, Iowa State Fair  
Thanks to Schoelerman's for allowing us to show him at Louisville

- Selling...**
- 10 Suffolk Winter Ewe Lambs
  - 5 Winter Hamp Ewe Lambs
  - 3-4 Suffolk Fall Ewe Lambs
  - 2 Hamp Fall Ewe Lambs
  - 3 Hamp Yearling Ewes by Held 09-2910
  - 3 Suffolk Yearling Ewes
  - 3-4 Suffolk Fall Ram Lambs
  - 2 Hamp Fall Ram Lambs
  - 3-4 Suffolk Yearling Rams
  - 1 Hamp Yearling Ram

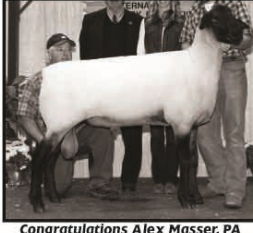


Congratulations to Tayler Wolff on her great success on her ewe lamb purchased in our 2012 sale.



Quam 11015 RRNN

Champion Ram and Supreme Ram Over All Breeds, Minnesota State Suffolk Show as a fall ram lamb. Sired by Quam 9076 "HeadlineRR" who was Junior Champion, 2010 Iowa State Fair and Reserve Champion Ram. Dammed by a "Cowboy" Daughter. 11015 was our lead sire for our 2013 Lambcrop and will now be our lead ram on our 2013 Farm Sale. We will be offering some Son's and daughters on the sale as well. If you're looking to add some bone and 3 Dimensional MASS to your sheep check him out!!



Congratulations Alex Masser, PA with his 1st Fall Ram Lamb, NAILE. Purchased from us privately.

Broehm's had a class winning ewe lamb at the National Junior Show on a ewe lamb from the 2012 sale!

Sired by Held 09-2910 and Dammed by a Top Phenom Daughter. 11036 Sired all of our naturally bred Hamp lambs for 2013 and they are lookin good. We also have a full brother to 11036 in the fall lamb pen!! We are going to offer you choice of either one of these up and coming Studs and we will retain the other to use for our 2014 lamb crop. Both these bucks have tremendous breed character, wool, bone, and most of all length of body that is hard to find!



Quam 11036 RRNN

**Held at Jerry Quam Farm**  
8533 Co. 30 BLVD • Wanamingo, MN  
Jerry: 507/824-2274 or Jerry Cell: 507/261-8201

**Jerry & Rex Quam**

• New Address **Rex, Malinda, Anna & Tegan**  
and Email • 60243 195th Ave. • Dodge Center, MN 55927  
Rex: 507/374-2976 or Rex Cell: 507/251-2650  
Rex email: Rex.Quam@Riverland.edu



**WHISPERING HILLS FARM**  
Registered Suffolks & Polled Shorthorns

Our Suffolk genetics cannot be found anywhere else because of our use of classic Suffolk rams from the 70's and 80's through AI. They are outcross genetics that emphasize production.

We offer free delivery from our farm in Perrydale, Oregon to the Midwest.

Dr. Joseph Schallberger  
Dr. Susan Schallberger  
6515 Kurtz RD  
Dallas, OR 97338

wisper@comcast.net  
503-704-2408

**Whisper 20GG**  
Birth weight: 26lb.

**Whisper 6FF "Standard-bearer"**

**Whisper 15BB**

**Ram lamb; born and raised as a triplet.**

<http://whisperinghillsfarm.com>

## UJSSA Board of Directors

[www.ujssa.org](http://www.ujssa.org)



The UJSSA is on facebook!

### Officers

#### **President:**

Taylor Wolff, Oakes, ND  
701-783-4514,  
wolff.taylor@gmail.com

#### **Vice President:**

Chris MacCauley, Atglen, PA  
610-593-2907, 484-319-8376,  
cmac.sheep@yahoo.com

#### **Secretary:**

Elizabeth Niedziela, Hadley, MA  
413-585-9158, niedzielae@gmail.com

#### **Treasurer:**

Connor Vincent, Laurel, DE  
302-858-2841, loveskat2@aol.com,  
whatamelon@bwave.com

### Directors

**Codee Gilbertson**, Sherwood, ND  
701-833-6754, 22and5@gmail.com

**Taylor Peck**, Pittstown, NJ  
908-328-4053, peck676@yahoo.com

**Makayla Johnson**, Manawa, WI  
920-878-0157, ma-  
kayla\_johnson@hotmail.com

**Faith Galford**, White Sulphur Springs, WV  
304-992-1256,  
faithgalford@yahoo.com

### Junior Coordinators

**Amanda Bergsieker**, Waverly, MO  
660-232-1433, ab\_vettech@yahoo.com

**Rebecca Krinsky**, Washington, OK  
405-501-1593, krin-  
skyhamps@gmail.com

### Ambassador

**Danielle Wittmann**, New Glarus, WI,  
608.214.5908,  
wittmandanielle@gmail.com

### Interns

**Paige Vincent**, Laurel, DE  
302-875-5369,  
whatamelon@bwave.com

**Jaclynn Kuntson**, Centerville, SD  
605-670-2147, ajknutson@iw.net

**Hope Juntunen**, Vienna, SD  
605-868-0503, HJ3051@K12.sd.us

**Andrew Slack**, Lake Geneva, WI  
262-903-1326, Kslack-  
suffolks@yahoo.com

**Kristina Weld**, Warwick, MA  
413-387-2615, suffolks25@gmail.com

# Notes for UJSSA Members

## Illinois Junior Preview Show

Juniors, start your 2013 show season by attending the **June 8, 2013** Junior Preview Show. The Illinois Suffolk Breeders' and the Club Lamb Associations have joined together for an exciting show day for juniors under 21 years old. This is a fun, family oriented, and educational show with low entry fees and great prizes and awards for all participants.

It is conveniently located in **Eureka, Illinois** at the Woodford County Fairgrounds just 10 miles north of the I-74 Goodfield exit or west of I-39 at the El Paso exit. Sheep arrive Saturday morning and are released Saturday following the show. Suffolk check-in is at 8:00 am with show time at 9:30 am. Club lambs check-in at 10:00 am with show time at 1:00 pm.

Questions?

Bill Royer (email: [royerfarm@aol.com](mailto:royerfarm@aol.com)) or Cheryl Roelfsema (email: [croelf@mtco.com](mailto:croelf@mtco.com) or Phone 815-795-5030)



## UJSSA Raffle

Again this year, the UJSSA will be selling raffle tickets to raise money for the 2013 Junior Suffolk Show. Raffle tickets are \$5 per ticket or 5 tickets for \$20. This year's raffle prizes include a Golf Club Set (value approximately \$1600, donated by Rebecca & Josh Krinsky), a half-page, full color ad in *The Banner Sheep Magazine* (valued at \$450, donated by *The Banner Sheep Magazine*), and \$100 cash prize. To purchase raffle tickets, please contact a UJSSA Director.

**UJSSA MEMBERS: If any junior member would like to sell raffle tickets please contact a UJSSA Director. The UJSSA Member who sells the most tickets will receive a prize (check back in the next newsletter for updated information on the prize).**

## Attention Michigan Suffolk Breeders!

Would you being to help the UJSSA plan and coordinate the 2013 National Junior Suffolk Show? The UJSSA is looking for volunteers to help with this year's events. If interested, contact UJSSA President, Tayler Wolff.

## 2013 National Junior Suffolk Sheep Show Sponsorship

Not able to attend NAILE? Or Didn't get asked to sponsor this year's upcoming junior show? Whether you have a specific class you would like to sponsor or just a general donation, check out the opportunities to support the next UJSSA Junior Show. Visit the USSA or UJSSA website and find the sponsor sheet to view available classes to sponsor. Contact the USSA Office to sign-up!

## USSA Ambassador

Deadline: June 1, 2013

Visit the USSA or UJSSA website to view the USSA Ambassador guidelines and application. The USSA Ambassador rules and application can also be requested from the USSA Office.





# UPDATE! USSA FUTURITY REVISIONS & ADDITIONS

## EWE LAMB FUTURITY

- ⇒ The ewe lamb futurity will revert back being a competition within USSA Districts.
- ⇒ The first place winner in each district will be guaranteed \$100 payout, with the remaining premiums based on participation within the district.
- ⇒ There will be an overall futurity winner—the individual with the most points across USSA Districts that is guaranteed at least \$500 and will receive a trophy given by Quam Suffolks.

## YEARLING EWE FUTURITY \*\*\*NEW\*\*\*

- ⇒ Any purchased yearling ewe is eligible to participate in the USSA Yearling Ewe Futurity.
- ⇒ It is the junior exhibitor's responsibility to nominate the yearling ewe at \$25 per ewe.
- ⇒ Yearling ewes must be nominated by July 1, 2013.
- ⇒ Yearling ewes are to be registered in the INDIVIDUAL NAME ONLY. No partnerships, farm, family, 4-H Club or FFA Chapter names accepted in the futurity program. The junior exhibitor of a futurity yearling ewe may not be a family member or employee of the breeder as listed on the registration paper. For purposes of the USSA Yearling Ewe Futurity, family members shall include children, grandchildren, brothers, sisters, nieces and nephews.
- ⇒ Premiums: The USSA Yearling Ewe Futurity is a national competition, unlike the USSA Ewe Lamb Futurity which is split into districts. There will be a 100% payback for the Yearling Ewe Futurity. Premiums will be paid out by December 31, 2013.

**Please review the USSA Futurity Rules\* for complete details on this great program!**

\*Complete futurity rules can be found on the [USSA Website](#) or contact the USSA Office.

## *A Great Recipe for Ewe to Try!*

Do you have a lamb recipe that is absolutely delicious you want to share? Do you have a child or junior that loves to cook? We'll feature their recipes, too! Please email it to [news@u-s-s-a.org](mailto:news@u-s-s-a.org) and it may be featured in an upcoming newsletter!

### **Sate Kambing (Indonesian Lamb Kebabs) Serves 4**

2 lb. boned lamb

2-4 Tbsp. Sate seasoning – available from Penzeys (see <http://www.penzeys.com/cgi-bin/penzeys/penzeys-sate-seas.html> )

2 Tbsp. water

2 Tbsp. rice vinegar

3 Tbsp. soy sauce

3 Tbsp. peanut oil

12 10" bamboo skewers



Place bamboo skewers into water to soak. Combine Sate seasoning and liquid ingredients in a bowl. Cut meat into ¾ inch cubes (if starting with frozen lamb, it is easier to cut in a partially-thawed state). Mix thoroughly with the seasoning blend and cover; if partially-thawed, can be left on the countertop, if fully thawed, place in the refrigerator. Let stand for 2 hours. Fire grill to very high heat; place meat on skewers and grill both sides until brown.

This is a recipe to serve to people who “don’t like lamb.” (Just don’t tell them what it is until they’ve been raving about it for a while.) Adapted from a recipe developed by the Penzey Company.

*This recipe was reprinted, with permission, from Baglien Suffolk's website. To see other recipes they have included on their site, visit: <http://www.thicksheep.com/recipes.html>*

# Suffolk Associations Close to Home



Ever wondered if there is a state or regional Suffolk Association near you? The following is a listing of active state and/or regional Suffolk Associations across the United States. If there is an active local Suffolk Association that has been overlooked, please contact the USSA Office. Local Suffolk Associations are encouraged to share news, events or updates through the Suffolk Newsletter!

## **CALIFORNIA SUFFOLK AND HAMPSHIRE SHEEP BREEDERS' ASSOCIATION** **Website**

President: Greg Ahart, Sacramento, CA Phone: 916.716.0089 Email: greg.ahart@superiorfarms.com  
Secretary: Mary McMurphy, Oroville, CA Phone: 530.570.9856 Email: cshsba@gmail.com or  
echobasinmcm@yahoo.com

## **ILLINOIS SUFFOLK SHEEP ASSOCIATION**

President: Bill Royer, Washington, IL Phone: 309-444-2356 Email: royerfarm@aol.com

## **IOWA SUFFOLK SHEEP ASSOCIATION** **Website** **Facebook Page**

President: Kelly Werner, Grinnell, IA Phone: 641.236.4976 Email: kgang@iowatelecom.net

## **MINNESOTA SUFFOLK SHEEP ASSOCIATION**

President: Jeremy Geske, New Prague, MN Phone: 612.756.1200 Email: jeremy.geske@gmail.com

## **MISSOURI SUFFOLK SHEEP ASSOCIATION**

President: Amanda Bergsieker, Waverly, MO Phone: 660.232.1433 Email: ab\_vettech@yahoo.com

## **MONTANA SUFFOLK SHEEP BREEDERS ASSOCIATION** **Website**

Contact: Jane Rath, Miles City, MT Phone: 406.232.1060

## **NORTHEAST SUFFOLK SHEEP ASSOCIATION** **Website** **Facebook Page**

President : Josh Miller, Schoharie, NY Phone: 518-231-8113 Email: millers@midtel.net

## **OHIO SUFFOLK SHEEP ASSOCIATION**

President: Barbie Casey, Apple Creek, OH Phone: 513-205-7992 Email: bcasey@roadrunner.com

## **PENNSYLVANIA SUFFOLK SHEEP ASSOCIATION** **Facebook Page**

President: Alex Masser, Elizabethville, PA Phone: 570.847.1833 Email: almass412@yahoo.com

## **SOUTH DAKOTA SUFFOLK SHEEP ASSOCIATION**

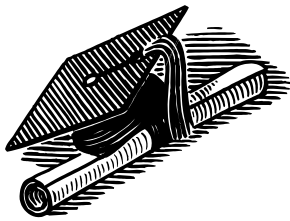
President: Duane Juntunen, Vienna, SD Phone: 605.881.3374 Email: jute@itctel.com

## **WISCONSIN SUFFOLK SHEEP ASSOCIATION** **Website** **Facebook Page**

President: Kevin Slack, Lake Geneva, WI Phone: 262.903.5971 Email: kslacksuffolks@yahoo.com

\*\*\*\*\*  
★ **Mark your calendars for....**  
★ **2013 National Junior Suffolk Sheep Show!**  
★ **July 4—7 • Michigan State University • East Lansing, MI**  
★ **Hotel Accommodations:**  
★ **Holiday Inn Express** \*\*\*please book prior to June 12th as the room block expires at that time\*\*\*  
★ **Hotel Address: 2209 University Park Drive Okemos, MI 48864 • Hotel Phone: 517.349.8700**  
★ **Rate: \$95 plus tax for rooms with 2 queen beds**  
★  
★ To view Michigan State University visitors information go to: <http://msu.edu/visitors/>  
★  
\*\*\*\*\*

Scholarship applications are posted!



UJSSA Members are encouraged to apply for the USSA Scholarship and the Let's Grow Suffolk Scholarship.

Each of these scholarships award \$1000.

**The deadline to apply has been moved to August 1, 2013 - please note this change.**

To see the specific guidelines for each scholarship, please review the applications on the [USSA](#) or [UJSSA](#) website.

**KIMM SUFFOLKS**  
**25th ANNUAL PRODUCTION SALE**  
SATURDAY, MAY 4, 2013 • 6:30 PM AT KCC, CEDAR RAPIDS, IA  
70 RAM LAMBS • 10 YEARLING RAMS • 100 EWE LAMBS • 10 YEARLING EWES

41 Years of breeding purebred Suffolks that are practical and complete, with emphasis on maternal traits, production, structural soundness, predictability, muscle, and they look BEST when SLICK SHORN.

**SALE LOCATION!!**  
Tippie Beef Center, Kirkwood Community College • Cedar Rapids, Iowa

**2013 LAMB CROP Sired by:**  
Kimm 7012  
Meadows 5211  
Kimm 11200  
McLaughlin 11-23  
MacCauley 2415  
MacCauley 2554  
Kimm 11192  
Miller 0-757

View all of these rams & additional information plus their extended pedigrees on our website.

**Guest Consignors**  
Alves Livestock  
Oakdale, CA  
Bar-Zel Suffolks  
Brookings, SD  
MacCauley Suffolks  
Atglen, PA  
All Guest Consignments Carry Kimm Bloodlines

**ATTENTION JUNIORS!!!**  
Up to \$500 Sale Credit by taking quiz prior to sale - Check website for details on all the above!

**2013 Preliminary Sale Catalog posted April 9 on website**

**Entire sale offering pictured by April 23 on website**

**RICH & MANDY ROURKE**  
Suffolk Club Lamb Flock  
4714 Sharon Center Rd SW • Iowa City, IA 52240  
319/683-3021 • Cell: 319/930-2001  
mourke@kirkwood.edu  
This flock is not enrolled in VFSCP

**BOB KIMM**  
1636 W Avenue • Dyess, IA 52224  
319/476-3875 • Cell: 319/290-8997 (Sale Day)  
btkimm@fcc.coop  
www.breedingsheepage.com/kimm

**KIMM FLOCK ASSISTANT TERRY CHAPMAN**  
1374 Old Muscatine Rd. • Tipton, IA 52772  
Work: 319/398-5568 • Cell: 319/329-5904 (Sale Day)  
terry.chapman@kirkwood.edu  
VFSCP - June 2003 • NSIP Records Since 1984

## Details, Data & Decisions

By: Dr. Val Slack, Slack Club Lambs  
North Manchester, IN

This presentation covers information regarding sheep flock records—why records should be kept, what records to keep, electronic recordkeeping options and Val's own tidbits.

To view this PowerPoint presentation given at 2013 Indiana Sheep Symposium [click here](#).

## SUFFOLK NEWSLETTER ADVERTISING RATES

1 page—\$200/month  
1/2 page—\$100/month  
1/4 page- \$50/month

Ads should be emailed to: [news@u-s-s-a.org](mailto:news@u-s-s-a.org). Please include the ad size and which months the ad should be run. Ads must be "publish-ready". Submit ads by the 25th of the month to ensure they will be included in the next newsletter.

# Sheep Industry Updates of Interest to Ewe!

## State Check-off News

*Reprinted from the ASI Weekly, American Sheep Industry Assn .*

The **Iowa** Department of Agriculture and Land Stewardship certified the results from the Iowa sheep assessment referendum that was held Feb. 25 to March 15.

The assessment will stay at \$0.10 per head after a simple majority of producers that voted did not support raising the assessment to \$0.25 per head.

The second question on the referendum, which would have allowed the Iowa Sheep and Wool Promotion Board, beginning in 2016, to change the assessment rate by \$0.05 every three years, was also defeated.

The **Oregon** Senate Rural Communities and Economic Development Committee passed a bill backed by sheep growers that is aimed at giving the Oregon Sheep Commission a more reliable source of revenue.

Senate Bill 719 allows the commission to assess sheep growers up to \$1 per head on sheep sold for meat. Under the current system, producers are assessed \$0.03 a pound on wool sales.

John Fine, chairman of the commission and president of the Oregon Sheep Growers Association, said the current system has resulted in a dramatic fluctuation in annual assessment revenue. Growers tend to store wool when prices are down and sell it when prices increase.

Voter registration has been extended to March 30 for a proposed **Indiana** Sheep and Wool Market Development Council.

In order for a vote to take place, at least 20 percent of Indiana's commercial sheep producers must register, in writing, by the March 30 deadline. The official number of Indiana sheep producers recognized for the vote is 1,833, meaning at least 367 must register for the vote to take place.

With the deadline extension, the proposed voting period is now April 15 to May 15, with the intent to announce results by June 1. The council would begin July 1.

## Public Meetings to Discuss Antimicrobial Use in Livestock

*Reprinted from the ASI Weekly, American Sheep Industry Assn .*

The Food and Drug Administration (FDA) in a Federal Register notice on Thursday announced plans for five meetings to provide an opportunity for public dialogue and feedback on challenges faced by the animal agriculture industry and practicing veterinarians as FDA implements its initiative for the judicious use of medically important antimicrobials in medicated feed or drinking water of food-producing animals. Particular emphasis will be placed on challenges faced by animal producers in areas that may lack access to adequate veterinary services. The meetings are jointly sponsored by FDA and the U.S. Department of Agriculture's Animal and Plant Health Inspection Service.

The dates and locations of the meetings are: April 9, Bowling Green, Ky.; April 23, Olympia Wash.; May 8, Fort Collins, Colo.; May 21, Pierre, S.D.; and June 4, College Station, Texas. The American Sheep Industry Association's Animal Health Committee encourages interested producers to participate.

Oral presentations from the public are welcome on the topic of discussion at the meeting. Although prior notification is not required, it is recommended that those desiring to make oral presentations notify the contact person before the meeting. In an effort to accommodate all who desire to speak, time allotted for each presentation may be limited. For more information, contact Patricia Arnwine, FDA, [240-276-9724](tel:240-276-9724) or [patricia.arnwine@fda.hhs.gov](mailto:patricia.arnwine@fda.hhs.gov).

*(Continued on page 13)*

## Sheep Producers Cautioned to Watch for Polio

News release from North Dakota State University [website](#)

Polioencephalomalacia (polio) is a disease that can become a problem in some sheep flocks, North Dakota State University Extension Service sheep specialist Reid Redden warns.

It is characterized by the death of brain cells and is different from human polio, according to Neil Dyer, director of NDSU's Veterinary Diagnostic Lab.

Rising feed costs have many livestock producers, including shepherds, looking for less-expensive alternatives to traditional feedstuffs. However, some of these changes may result in animal health problems such as polio if diets are not balanced adequately for vitamins and minerals.

The primary cause of polio in sheep is thiamine deficiency, or a disturbance in how the body uses thiamine. Thiamine (vitamin B1) is produced naturally in the rumen of sheep on a normal diet.

Feeding high-grain diets to ruminants can predispose them to polio because it slows thiamine production in the rumen and increases mechanisms that degrade thiamine produced in the rumen. Therefore, supplemental thiamine should be added to all high-grain sheep diets to prevent polio, Redden says.

Sheep suspected of having polio from a thiamine deficiency recover quickly after a few treatments with vitamin B-complex.

Another cause of polio in sheep is elevated levels of sulfur (greater than 0.43 percent dry-matter basis) in the diet or sulfates (greater than 3,000 parts per million) in the drinking water. A high level of sulfur leads to the production of hydrogen sulfide in the rumen. Hydrogen sulfide makes its way into the blood stream and eventually causes brain damage.

Some alternative feeds, especially distillers byproducts, can contain high levels of sulfur. Drought conditions can reduce the water quality of ponds and reservoirs that livestock use as their primary water source. The best method of preventing polio from excess sulfur is to test feed and water sources, Redden says.

Plants such as bracken fern and horse tail also contain enzymes that can cause polio. Additionally, amprolium, a drug used to treat coccidiosis, can cause polio if given at high enough doses. However, these causes of polio are much less common.

Sheep affected by polio typically are isolated from the flock and exhibit signs of blindness, Dyer says. If the problem progresses, they tend to arch their back with their head up and appear to be stargazing. Sheep often are found on their side, with their feet paddling, and are unable to get up. Depending on the weather conditions and severity of the disease, death typically occurs within hours to a few days.

Polio most often is seen in lambs from a few weeks to 6 months old; however, it can affect sheep of any age. Sheep producers who suspect polio in their flock should contact their attending veterinarian for treatment and prevention advice.

### **United Suffolk Sheep Association**

#### **Registrations by State**

**2011 - 2012 Fiscal Year**

<b>State</b>	<b>Registrations</b>
Alabama	5
Alaska	4
Arizona	3
Arkansas	3
California	479
Colorado	146
Connecticut	3
Delaware	31
Florida	2
Georgia	3
Idaho	413
Illinois	462
Indiana	560
Iowa	1032
Kansas	29
Kentucky	42
Louisiana	2
Maine	15
Maryland	96
Massachusetts	60
Michigan	181
Minnesota	713
Missouri	200
Montana	296
Nebraska	308
Nevada	55
New Hampshire	15
New Jersey	32
New York	148
North Carolina	20
North Dakota	115
Ohio	323
Oklahoma	159
Oregon	369
Pennsylvania	528
South Dakota	411
Tennessee	104
Texas	73
Utah	152
Virginia	206
Washington	197
West Virginia	163
Wisconsin	475
Wyoming	124
Ontario, Canada	4
<b>Total Registrations</b>	<b>8761</b>

*Reported Registrations include member and non-member registrations.*

# Calendar of Events

**Have a Suffolk related event you would like to add to the calendar of events?** Email your event to: [news@u-s-s-a.org](mailto:news@u-s-s-a.org). Event flyers, show rules and entry forms can be found on the USSA website event page. The newsletter may not contain all upcoming events. To find a full listing, please visit : [www.u-s-s-a.org](http://www.u-s-s-a.org) or [www.ujssa.org](http://www.ujssa.org).

## **April**

- 2-3 Wright's Rocky Acres Online Club Lamb Sale, Galena, MO [website](#)
- 5 Illini Spring Sale, Bloomington, IL
- 6 Joy Genetics Club Lamb & Show Pig Sale at the Joy Farm 5130 F Rd. Dunbar, NE. Pigs sell at 2pm & Lambs follow at 3:30pm. More details call: 402-873-4406, 402-873-6648(o), or 402-209-1207©
- 6 Slack's 35th Annual Formula for Champions Club Lamb Sale - 1:30pm EST, Whitley County 4-H Fair grounds, Columbia City, IN. 260-750-7399(Tom) or 260-750-1561 (Val) [website](#) [Facebook Page](#)
- 13 California Ram Sale, Tulare, CA [website](#)
- 26—27 National Cornbelt Sale, Des Moines, IA
- 30 - May 1 Stars of the North Online Ewe and Stud Ram Sale [www.wlivestock.com](http://www.wlivestock.com)

## **May**

- 1 Michigan State University, 28th Production Sale, Online Auction [www.wlivestock.com](http://www.wlivestock.com)
- 4 25th Annual Kimm Production Sale, 6:30 pm, Tippie Beef Center, Kirkwood Comm. College, Cedar Rapids, IA. Entire sale catalog posted on the [website](#) by April 23rd.
- 9-11 Big Ohio Sale Weekend, Eaton, OH—The Suffolk Social lunch will be held Saturday prior to the Suffolks selling on the east side of the barn.
- 25-26 Great Lakes All Breeds Show & Sale, Wooster, OH
- 30— June 1 Nugget All-American Show and Sale including the National Suffolk Sale, Sparks, NV

## **June**

- 8 Illinois Junior Preview Show, Woodford Co. Fairgrounds, Eureka, IL
- 15 Midwest Junior Preview Show, Missouri State Fairgrounds, Sedalia, MO [website](#)
- 25-29 Midwest Stud Ram Sale, Sedalia, MO [website](#)

## **July**

- 4-7 2013 UJSSA National Junior Suffolk Sheep Show, Michigan State University, East Lansing, MI
- 18 –21 Northeast Youth Suffolk Sheep Show, Big E Fairgrounds, W.Springfield, MA
- 19-20 Crossroads of the West All-Breeds Sheep Sale, Heber City, UT
- 20 Minnesota Suffolk Sheep Association State Show - Faribault, MN
- 21 Minnesota Junior Suffolk Sheep Show - Faribault, MN

## **August**

- 1 [Deadline for the USSA Scholarship and Let's Grow Suffolks Scholarship applications](#)
- 1 2013 Midwest Regional Jr. Suffolk Show, Ohio State Fair - 5:30 PM
- 17 Iowa Hawkeye Suffolk Sale, Des Moines, IA

# Member News



To USSA Member **Susan Shultz**, who has been elected to the American Sheep Industry Executive Board. Susan and her husband Bill live near DeGraff, Ohio where they operate Bunker Hill Farm.



Congratulations to USSA Director **Rex Quam** who was married on March 24, 2013. Rex and Malinda, along with Malinda's daughters, Anna and Tegan reside in Dodge Center, MN.

## **Thinking of the Lehrkamp Family ...**

The following is an email received from the Kori Lehrkamp. Kori's husband Michael and daughter Paige, from Highmore, South Dakota are USSA and UJSSA Members.

This note comes in the wake of turmoil and distress at the Lehrkamp farm and on behalf of Michael, Paige (10 yrs old) Grady (8) and Maddie (5) Lehrkamp. Sunday night we were waiting for Paige's Angus show heifer Abby to calve for the first time and thought perhaps that night was the night as her due date was the 15th. You know how it is with the first baby and the first show animal :) Mike (Paige's dad) was going out every two hours or so to check on her. He'd been out at about 10 pm and was back out at midnight when he discovered the barn totally engulfed in flames. We lost the barn all the livestock (which was the majority of our herd) in it which would have been 150 head of ewes and 210 lambs (35 Suffolk Ewe and 50 Suffolk lambs) as and Paige's Sweet Abby. Mike tried to get them out but it was just too late. As the barn was burning to the ground because of the awesome wind one of our haystacks caught on fire and we lost 50 bales.

My perspective is this Abby (the heifer) died a hero, had Mike not been checking as often as he was he would not have found the fire at all and then where would we be? As hard as this wind was blowing and as many embers I saw flying through the air it could have been much much worse. We are left with 3 ewe lambs that were open and outside, our herd bucks, and Bella the Angus heifer Paige bought at the Rapid City, SD Stock Show in January.

Nothing gets my heart pumping faster than the sound of a fire whistle or the flashing of fire truck lights. While some might find our loss manageable this is the 2nd devastation of this magnitude we have endured in the last three years. I share this with you only to bring you up to speed we lost our home and all our possessions in a fire in August of 09. We walked away with only the clothes on our backs and some of us with not even shoes on our feet. But God was faithful then and I have no doubt he will be just as faithful now.

"Trust in the Lord with all your heart and lean not on your own understanding; in all your ways know him, and he will make your paths straight." Proverbs 3:5-6

My heart breaks for my children and my husband. Their hearts are breaking and I feel helpless. As a pastor I have all the right words but as a mother and a wife I feel completely useless. So I am writing to you on their behalf. Paige is a member of the Junior Angus association as well as the Junior American Suffolk Sheep Association. I don't think I have to tell you how completely devastated we are. Our community is awesome and totally supportive but there is nothing like a little "love" from those who can understand best, people just like us.

Paige's, her dad and siblings contact information is PO Box 631 Highmore SD 57345 and her phone number is 605-852-2106. Perhaps if they received a card or a call it might brighten their day.

Remember what we spend our whole lives building can be gone in an instant. Appreciate those who love you and love those who appreciate you.

Peace and blessings to you all,

From a mom whose heart is breaking Kori Lehrkamp



Paige and her Suffolk Ewe lamb at the 2013 National Junior Suffolk Show

## Total Sheep and Lamb Inventory Down 1 Percent

From USDA National Agriculture Statistics Service

Released February 1, 2013



This is an excerpt from The USDA's Report. To view full report [click here](#).

All sheep and lamb inventory in the United States on January 1, 2013, totaled 5.34 million head, down 1 percent from 2012. Breeding sheep inventory decreased to 3.98 million head on January 1, 2013, down 1 percent from 4.0 million head on January 1, 2012. Ewes one year old and older, at 3.14 million head, were 1 percent below last year.

Market sheep and lambs on January 1, 2013, totaled 1.36 million head, down 1 percent from January 1, 2012. Market lambs comprised 94 percent of the total market inventory. Twenty-three percent were lambs under 65 pounds, 12 percent were 65 -84 pounds, 22 percent were 85 -105 pounds, and 37 percent were over 105 pounds. Market sheep comprised the remaining 6 percent of total market inventory. The 2012 lamb crop of 3.46 million head, was down 2 percent from 2011. The 2012 lambing rate was 109 lambs per 100 ewes one year old and older on January 1, 2012, unchanged from 2011.

Shorn wool production in the United States during 2012 was 28.5 million pounds, down 3 percent from 2011. Sheep and lambs shorn totaled 3.93 million head, also down 2 percent from 2011. The average price paid for wool sold in 2012 was \$1.53 per pound for a total value of 43.6 million dollars, down 11 percent from 48.9 million dollars in 2011.

Sheep death loss during 2012 totaled 229 thousand head, a decrease of 5 percent from 2011. Lamb death loss decreased 4 percent from 380 thousand head in 2011 to 365 thousand head in 2012.

## Suffolks Today And Tomorrow Conference Commemorative Print



This commemorative print was created by well known livestock artist CJ Brown, during the Suffolks Today and Tomorrow Conference held on June 29, 2012 in Sedalia Missouri. Prints can be ordered with or without conference information included on print.

Prints are only available for purchase through the United Suffolk Sheep Association. Prints are \$80 each (price includes shipping). To order prints, please contact the USSA Office by phone (641.684.5291) or email ([info@u-s-s-a.org](mailto:info@u-s-s-a.org)).

**IS THERE SOMETHING YOU WOULD LIKE TO SEE IN THE NEWSLETTER?**

EMAIL THE USSA OFFICE: [news@u-s-s-a.org](mailto:news@u-s-s-a.org)



# *Selling the World's Fastest Growing Sheep!*



Michigan State University

28<sup>th</sup> *Production Sale*

*Online Auction*

*May 1<sup>st</sup> & 2<sup>nd</sup> - 2013*

*Sale managed by:*

**Willoughby Sales**

[www.wlivestock.com](http://www.wlivestock.com)

**Selling Suffolks & Polled  
Dorsets**

Top selling ram 2010 Center of the Nation NSIP Sale going to Bunkerhill Farms of Ohio. Went on to sire Suffolk breed leading sire for Carcass + Index for them

**EBVs, Codon 171, & ultrasound carcass data available on all entries!**

**All sheep sold "slick" shorn  
OPP free flock!**

Alan Culham

Manager

517/896-7378

[culhama@msu.edu](mailto:culhama@msu.edu)

Dept. of Animal Science

1290 Anthony Hall

East Lansing, MI 48824

Dr. Richard Ehrhardt

Faculty Coordinator

517/899-0040

[ehrhart5@msu.edu](mailto:ehrhart5@msu.edu)

Attend our "Open House"

Saturday, April 27<sup>th</sup>

10:00 a.m. - 2:00 p.m.

MSU Sheep Barn

**MICHIGAN STATE  
UNIVERSITY**

## Learning Opportunities

### **Howard Wyman Sheep Industry Leadership School—July 14-17, 2013 in San Angelo, TX**

Dr. Frank Craddock, Texas A&M AgriLife Research and Extension Service, will be our 2012 coordinator. Interested individuals may apply by completing a brief application and short essay. A group of 26 participants, age 20 or older, will be selected to attend. The registration fee is \$200 per person and participants are responsible for their own travel expenses. NLFA covers the cost of food, lodging and tour-related expenses during the school. No fee is required until after the applicant is selected. Applicants will be notified in early May.

How to Apply: There is no fee to apply. Complete your application form (pdf) and submit it electronically no later than May 3, 2013. For question or more information, call the NLFA office at 503.364.5462 or email us at [info@nlfa-sheep.org](mailto:info@nlfa-sheep.org).

### **Vaccination Programs for Sheep and Goats**

*Reprinted from the ASI Weekly, American Sheep Industry Assn .*

The first session of the 2013 Ohio Sheep and Goat Web Series, presented by Eric Gordon, DVM, regarding vaccination programs for sheep and goats, has been recorded and is available at <http://go.osu.edu/2013Sheep-1>.

### **Online Resources for the Sheep Industry**

*Reprinted from the ASI Weekly, American Sheep Industry Assn .*

For the past several years, Susan Schoenian, Sheep and Goat Specialist with the University of Maryland Extension, has been conducting webinar short courses for sheep and goat producers. The short courses include 4 to 6 individual webinars and participants can log in from home.

Several topics are available to view including Breeding Better Sheep and Goats, Nutrition and Feeding, Spring Worms and Ewe and Doe Management.

These webinars are available at [www.sheepandgoat.com/recordings.html](http://www.sheepandgoat.com/recordings.html). There are also links to the PowerPoint presentations that accompanied each webinar.

Also available is a one-hour archived webinar, Farm Animal Biosecurity -- Manage Disease Risks on the Farm, for livestock producers and extension educators. This course was developed for the cooperative extension system and can be accessed at

<https://connect.extension.iastate.edu/p5djh8qzde4/?launcher=false&fcsContent=true&pbMode=normal>.

### **The American Consortium for Small Ruminant Parasite Control—May 20—22, 2013**

Information from [http://www.fvsu.edu/acsrpc\\_registration](http://www.fvsu.edu/acsrpc_registration)

The American Consortium for Small Ruminant Parasite Control (ACSRPC), an organization dedicated to development and on-farm validation of non-chemical methods of parasite control in sheep, goats, and other livestock, will be holding its first International Conference on Integrated Parasite Management (IPM) at Fort Valley State University (FVSU) in Fort Valley, GA, on May 20-22, 2013. It will be a Train-the-Trainer Conference to train animal health professionals (Veterinarians, County Extension Agents, University personnel) in IPM principles, who will then train farmers in these principles throughout the country. The conference may also be of interest to individual farmers who would like to learn more about sustainable parasite management in small ruminants. The activities and speakers at the Conference are described in the attached documents and on our website at [ACSRPC.org](http://ACSRPC.org). Continuing Education credits for this conference have been approved by the Georgia State Board of Veterinary Medicine and the American Registry of Professional Animal Scientists.

For more information about ACSRPC, please visit [www.acsrpc.org](http://www.acsrpc.org).

# Learning Opportunities

## Pennsylvania Offers Shearing Schools

Reprinted in part from the ASI Weekly, American Sheep Industry Assn .

Pennsylvania State Extension has scheduled four sheep shearing workshops across the state for new and experienced shearers. Each two-day session is filled with educational opportunities as well as time for hands-on shearing. Sessions are currently planned for April 25 & 26, May 3 & 4, May 9 & 10 and September 9 & 10.

Workshops will be held in Tyler Hill, Scenery Hill, Grove City and on the main campus at Pennsylvania State University. The registration fee is \$75 for the first person and \$50 for the second person from the same farm. Equipment will be supplied.

For additional information, go to <http://agsci.psu.edu/sheep-shearing> or contact Walt Bumgarner at-wob10@psu.edu or 724-438-0111. Since registration deadlines are set for each session, be sure to inquire right away.

## California Shearing Schools

Reprinted from the ASI Weekly, American Sheep Industry Assn .

Two sheep shearing schools are being planned in California this spring.

Participants will learn to shear sheep using the methods taught by certified instructors of the National Sheep Shearing Program (NSSP). These five-day, hands-on courses, jointly sponsored by the NSSP and the University of California (UC) Cooperative Extension in Mendocino County, is intended for both the beginner as well as the advanced shearer. It is especially designed to teach how to shear to maintain a quality wool clip and minimize stress to both the shearer and the animal. Additional topics covered include learning about the shearing machine, how to care for and maintain the hand piece, how to sharpen combs and cutters and how to handle the fleece once it's off the sheep.

The first school runs from April 29 to May 2 and the second is scheduled for May 6-10 at the UC Hopland Research and Extension Center.

The fee for the course is \$295 and covers all materials and equipment. Pre-registration ends April 16. For more information and to register, go to <http://cemendocino.ucanr.edu> and click on the event in the calendar listing.

## United Suffolk Sheep Association

### Top Registers by Member

2011- 2012 Fiscal Year

Member	State	Registrations
Kimm Suffolks	Iowa	232
William & Elizabeth MacCauley	Pennsylvania	180
Andrus Suffolks	Idaho	156
Tom Slack	Indiana	143
Pat Erstrom	Oregon	125
J & A Phillips	Idaho	106
Cheryl Bierle	Iowa	89
Kevin Lansing	Iowa	82
Dreher Family Suffolks	Montana	81
Jerry & Rex Quam	Minnesota	74
Marlin Subra	Wisconsin	73
Virgina Tech	Virginia	70
US Meat Animal Research Center	Nebraska	67
Kenneth. E and Melanie D. Fowle	California	58
Paul & Jeremy Russell	Indiana	58
Renn-Vue Farms	Michigan	57
Robert Amundson	North Dakota	56
Heintz Family Suffolks	Minnesota	56
Daryl Thomas Family	South Dakota	55
Lyn Lee Farms	Pennsylvania	53

*Reported registration numbers include amnesty registrations.*

*Thank you to those of you who took advantage of the USSA Amnesty Program!*



# CLASSIFIED ADS

*USSA Members only. Ads are free. Must be sheep related: animals, vehicles, trailers, equipment, transportation, working dogs, etc. Include your contact information. Email you ad to: news@u-s-s-a.org. The newsletter may not contain all of the classified ads or include photos that are posted with the classified ad. To find a full listing, please visit our website: www.u-s-s-a.org.*

## Ride Wanted: Reno to Webster City, IA

Looking for someone to haul sheep back from Reno to Webster City or within 100 or so miles of Webster City if I get any bought. Any distance back east would help. I cannot make it this year. This would help pay for gas if you are heading back east past Iowa or toward Iowa.

**Contact:** Mark Weisberg, 515-835-9230 (cell) or 515-832-4465 (work)

## For Sale - Great Pyrenees Pups

Farm raised with sheep, out of working parents. Born 1/8/13

**Contact:** Jason Johnstone, 618-843-2329 (Cell) or 618-869-2329 (Home)

## Great Pyrenees Wanted

We are needing to replace some of our Great Pyrenees females as ours are getting some age on them. We are looking for some big, rugged females to use for breeding that are AKC registered. Pups or young adults will be considered. We are located 45 minutes from the Ohio Suffolk Sale

**Contact:** Connie Schakel, Knightstown, IN, 765.345.5711(home) or schakel@embarqmail.com

## Proven Stud Buck For Sale

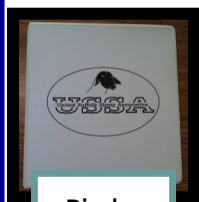
R & R Suffolks 431 was born 2-16-08 as a twin. He goes back to Luxford on the top side and Double H on the bottom side. He is RR/NN. This is the same ram that sired the first place slick sheared yearling ewe for Don Craft at Sedalia in 2010. He is BIG, correct and an aggressive breeder. We purchased him from Don in 2010 and used him heavy. He has done a tremendous job for us, but we have several of his daughters in the flock and some semen in the tank. This buck has many good things to offer to many flocks. Guaranteed to breed. We are located 45 minutes from the Ohio Suffolk Sale. Price:\$750

**Contact:** Will & Connie Schakel, Knightstown,IN, 765.345.5711(h) or 317.439.6397(c) or schakel@embarqmail.com

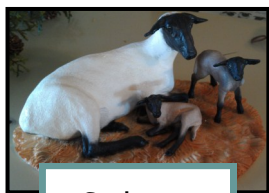
## ITEMS FOR SALE

To purchase, contact the USSA Office

Plastic Sheet Protectors .....	\$0.20
USSA Window Clings.....	\$1.00
USSA Flock Memo Book.....	\$1.00
USSA Folders.....	\$2.95
USSA 3-ring Binders.....	\$9.50
Suffolks Today & Tomorrow Print.....	\$80.00
Limited Edition Suffolk Sculptures.....	\$195.00



Binder



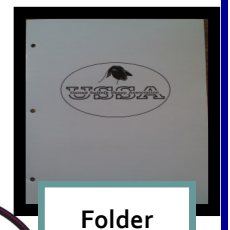
Sculpture



Print



Window Cling



Folder



## Have something to share?

We're looking for photos, news, show and sale information, classified ads, recipes, helpful hints & tips, educational opportunities and questions for the question and answer section to include in the Suffolk Newsletter! Or anything else that may be of interest to fellow Suffolk Breeders you would like to share! If you have any suggestions on other items that should be included in the Suffolk Newsletter, please send those ideas as well!

Please submit information by the 25th of the month to be included in the following month's newsletter. Information can be emailed to [news@u-s-s-a.org](mailto:news@u-s-s-a.org) or contact the USSA Office.



## ADVERTISE YOUR FLOCK AT THE 2013 NATIONAL JR. SUFFOLK SHOW!



If you are interested in having a banner made to advertise your flock, we are offering all of this year's sponsors a discounted price of \$50! If you have helped sponsor in the past and already have a banner, we will hang your banner at this year's Junior Show in East Lansing, MI for only \$25! If interested, please contact our Jr. Coordinator, Amanda Bergsieker by May 15th!

Flock banners are hung near the National Jr. Suffolk Show show ring. See photo above for examples of flock banners hung at last year's junior show.

## OHIO SALE WEEKEND SUFFOLK SOCIAL

Planning to attend the Suffolk Sale during the Big Ohio Sale Weekend? If so, please plan to attend the Suffolk Social lunch on Saturday, May 11th. The lunch will be located on the east side of the barn.

Hope to see you there!



Lunch is hosted by the Ohio Suffolk Sheep Association  
Lunch is sponsored by the Ohio Suffolk Sheep Association and the United Suffolk Sheep Association

**We WANT your fiber . . .**

**We NEED you!!!**

We are an agricultural cooperative focusing on natural fibers grown in the US and manufactured in the US. We produce 24 different products that need your fiber.

We need you as members because we cannot do this alone. We are not asking for all your fiber just 10% to be put towards changing the US Textile industry for the benefit of the farms and all the employees of US Textile.

*We've been in business since May 2007. Please join us by visiting our website.*

[www.naturalfiberproducers.com](http://www.naturalfiberproducers.com)

**United Suffolk Sheep  
Association**

PO Box 995  
Ottumwa, IA 52501

Phone: 641.684.5291

Fax: 641.682.9449

E-mail: [info@u-s-s-a.org](mailto:info@u-s-s-a.org)



"The Breed in the Lead"

We're on the Web!

[www.u-s-s-a.org](http://www.u-s-s-a.org)

# Suffolk Scenes

## IT'S LAMBING SEASON!

This is one of the best times of the year for a Suffolk Enthusiast! Capture images of those spunky little Suffolk lambs and email them into the office! Over the next issues of The Suffolk Newsletter your photo could be featured here...

## Sheep Resources

The USSA Office often gets phone calls asking for resources producers can go to for sheep-related questions. The following are resources the office is aware of for producers to use. Since this may not be a complete list, if there are additional resources that you use and would like to share please email those to [news@u-s-s-a.org](mailto:news@u-s-s-a.org).

### New Sheep Producer Resource Website

Sheep Community of Practice is a new web-based tool available to sheep producers through the eXtension Foundation, a non-profit entity. This website offers a Ask the Expert Tool that will connect you with experts and allow you to ask questions. Through the Ask the Expert Tool, the producer can even attach images. The website also offers information about sheep feeding and nutrition, reproduction and breeding, management practices, genetic selection, health and veterinary care, grazing and pasture, and wool. To visit the Sheep Community of Practice website go to: <http://www.extension.org/sheep>

### Ask a Sheep Vet

This website is a blog written by sheep veterinarian Dr. Kennedy of Pipestone Veterinary Clinic, Pipestone, MN. The blog contains answers to various sheep related questions, with new information added often. To visit Dr. Kennedy's blog please go to: <http://askavetsheep.wordpress.com/> Also, if you "LIKE" [Pipestone Vet Sheep-Goats](#) on Facebook, are several question and answers posted daily.

### A Guide to All Things Sheep©

A Guide to All Things Sheep© is a new resource for sheep breeders and producers by Premier 1 that offers information on several topics from educational guides, how to's, photos, recipes, an events calendar, view points and industry spotlights. To visit A Guide to All Things Sheep© please visit: [www.premier1supplies.com/sheep-guide/](http://www.premier1supplies.com/sheep-guide/)

Check out the USSA Facebook page!

