

Suffolk Newsletter

The United Suffolk Sheep Association

Happy February Suffolk Breeders!

By now, I'm sure most of you have begun lambing and are keeping extremely busy! With that being said, I don't want to hold you up for too long but wanted to give a few reminders:

- ⇒ Don't forget to take advantage of the reduced USSA membership rate by paying before March 1st! Until March 1st, membership dues are \$35 and will then increase to \$50 after March 1st. This is not only a cost-savings advantage; members who have paid by March 1st will be included in the 2013 USSA Breeder Directory. This directory is handed out at events from coast to coast as well as mailed to individuals requesting Suffolk information from the USSA Office!
- ⇒ Does the office have your current contact information? If not, please update the office—we want to make sure that current information is printed in your 2013 USSA Breeders Directory listing!
- ⇒ The new registration program is up and running in the USSA Office! The next step is to get the program ready for you, the members to use. In the near future the online registration option on the USSA website will be replaced with the new program. As we work towards completing the design for member use, we ask for your help. There is a little leg work in preparing the program for members to use. If you plan to use/continue using the online registration program (rather than sending in applications to the office), please let the office know. The program will be setup and activated per member for member use. Further instruction will be mailed to members planning to utilize the online registration program when the program is completed.

As always, if there's anything the office can help with, please give me a call!



Amanda Events

Welcome!

...new members, returning past members (whom have not been active in recent years) and past UJSSA members who have joined the USSA during January 2013.



Joe & Doris Griffy, Clarksville, TN
Jon Kulas, Houston, MN
Craig & Garrett Peterson, Scranton, IA
Dewey Smuin, Terreton, ID

Ari Katz, Takoma Park, MD
David L. Mitchell, Clintonville, WV
Radell Schrock & Mike Zook, Harrisonburg, VA
Leslie Thornton, Stayton, OR

February 2013

Volume 3, Issue 2

Inside this issue:

Notes from the UJSSA	4
Directors Spotlight	3
UJSSA Information	6
USSA Futurity Results	8
Lambing Time Management Tips	10
Suffolk Associations Close to Home	12
Sheep Industry News	14
Learning Opportunities	16
Calendar of Events	17

Current USSA Board of Directors

Officers

President:

Rob Zelinsky (District 2)
Brookings, SD
605-695-7791
robzelinsky@yahoo.com
(Exp. 2014)

Vice President:

Bill MacCauley (District 4)
Atglen, PA
Home: 610-593-2907
Cell: 610-256-1608
billmac@johnrock.com
(Exp. 2013)

Treasurer:

Rex Quam (District 3)
Wanamingo, MN
Home: 507-824-2248
Cell: 507-251-2650
rjqum@frontiernet.net

District 1

Donna Mays (Exp. 2014)
Howe, ID
208-767-3405
lostriverdm@yahoo.com

Larry Pauly (Exp. 2013)
Delta, UT
435-864-2777
l_pauly@msn.com

Keith Pumphrey (Exp. 2015)
Walla Walla, WA
509-529-0140
jkpumphrey@hotmail.com

District 2

Virginia Gergen (Exp. 2015)
Lincoln, NE
402-477-7333
veegergen@yahoo.com

Amanda Bergsieker (Exp. 2013)
Waverly, MO
660-232-1433
ab_vettech@yahoo.com

District 3

Kim Ketcham (Exp. 2013)
Edwardsville, IL
Home: 618-656-5388
Cell: 618-581-3554,
kimketcham@hotmail.com

Paul Skartvedt (Exp. 2015)
Radcliffe, IA
515-450-1302
skarby67@yahoo.com

District 4

Diane Russell (Exp. 2015)
Eaton, IN
765-288-4845
farmer1224@hughes.net

Lisa Webster (Exp. 2014)
Windham, ME
Home: 207-892-2161
northstarfarms@me.com

Updated ByLaws

All proposed USSA ByLaw amendments have been approved and passed by a vote of the membership on November 1, 2012. To view updated USSA ByLaws, please visit the USSA website and or view in the 2013 USSA Directory, which will be distributed in April.



Do not forget to pay your 2013 USSA Membership Dues by March 1st to get the discounted rate of \$35 and to be included in the 2013 Breeders Directory!

Get to Know Your USSA Board of Directors.

KIM KETCHAM

District 3
Edwardsville, IL



Kim Ketcham

How long have you raised Suffolks? For 50 years

What/Who inspired you to raise Suffolks? I started showing Suffolk sheep by my own choice in 1963 at the age of 10. Within several years, I started showing for Bill Heggemeier; traveling the national show circuit which ultimately reaffirmed my preference to always raise Suffolk sheep. My children Kerry & Katie wanted to show Suffolks and now the grandkids are showing Suffolks.

Currently, how many Suffolks do you own? 35

What is one of your fondest memories related to Suffolks? There are too many to choose from!

What is something you have gained from raising Suffolks? Showing Suffolks on the national level made me see the need for sheep equipment. This would lead me to start building sheep equipment which has been our family business for 35 years now. Showing Suffolks and having to travel all over the country to shows & sales as a teenager only prepared me for what my family and I are doing now and for the success in our business. Also, I have gained a lot of memories/ time with family, lifelong friends, and people I have met along the way which has been priceless.



Kim, as a teenager showing Suffolks.



Kim and one of his Great Pyrenees

Why did you want to become a USSA Director? Suffolk sheep are the only breed of sheep I have ever raised. I wanted to promote the sheep breed I have invested so much into over the years and to continue promoting the junior portion of our association--they are the future of the industry.

As a USSA Director, what committees do you serve on? I have served on almost all of them throughout the years but I currently serve on the By-Laws Committee

Where can improvements be made within the USSA to benefit it's membership, gain new members and retain its current members? Promotion and consistency in what we are promoting. If we would breed a consistent sheep that can breed on their own, lamb on their own, and maintain itself and be profitable in the showing and on the farm, I think we would have a lot more people staying in or getting involved in our association.



Kim, Kerry & Koy looking at sheep

(Continued on page 4)

Discuss any major challenges facing the USSA or Suffolk breed. Keeping the membership. We have lost a major number of people in the industry because we have failed to maintain a sheep true to its breed character and sometimes have let the showring dictate what we raise not what the sheep are intended to be used for—a finished meat product. Just because a sheep is tall doesn't make it the best sheep and we need judges to judge according to our breed standards and overall correctness of the sheep. This consistency will help the membership numbers because they will have a breed standard to meet and hopefully will have a judge recognize the correctness of their sheep.



Kim, Kylie & Koy



NAILE 2000—"Sasquatch"



Kim & Koy Carding Sheep



Kim Ketcham and Family,

UJSSA Board of Directors

www.ujssa.org

The UJSSA is on facebook!



Officers

President:

Taylor Wolff, Oakes, ND
701-783-4514,
wolff.taylor@gmail.com

Vice President:

Chris MacCauley, Atglen, PA
610-593-2907, 484-319-8376,
cmac.sheep@yahoo.com

Secretary:

Elizabeth Niedziela, Hadley, MA
413-585-9158, niedzielae@gmail.com

Treasurer:

Connor Vincent, Laurel, DE
302-858-2841, loveskat2@aol.com,
whatamelon@bwave.com

Directors

Codee Gilbertson, Sherwood, ND
701-833-6754, 22and5@gmail.com

Taylor Peck, Pittstown, NJ
908-328-4053, peck676@yahoo.com

Makayla Johnson, Manawa, WI
920-878-0157, ma-
kayla_johnson@hotmail.com

Faith Galford, White Sulphur Springs, WV
304-992-1256,
faithgalford@yahoo.com

Junior Coordinators

Amanda Bergsieker, Waverly, MO
660-232-1433, ab_vettech@yahoo.com

Rebecca Krinsky, Washington, OK
405-501-1593, krin-
skyhamps@gmail.com

Ambassador

Danielle Wittmann, New Glarus, WI,
608.214.5908,
wittmandanielle@gmail.com

Interns

Paige Vincent, Laurel, DE
302-875-5369,
whatamelon@bwave.com

Jaclynn Kuntson, Centerville, SD
605-670-2147, ajknuntson@iw.net

Hope Juntunen, Vienna, SD
605-868-0503, HJ3051@K12.sd.us

Andrew Slack, Lake Geneva, WI
262-903-1326, Kslack-
suffolks@yahoo.com

Kristina Weld, Warwick, MA
413-387-2615, suffolks25@gmail.com

If ewe have a little free time . . .

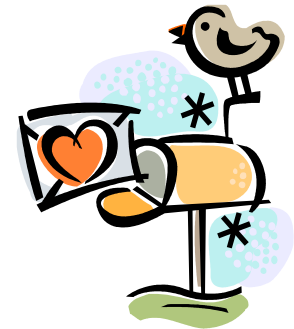
(for the kid in everyone!)

Can ewe find the hidden words?

Z K O F G K W Z E J G A E V L
A C R Z E E T P X T M N F F V
N M I E A B A E M A I R C C E
D V N T P R R L L T G X H L L
V M H A I Z M U N P U Z P A G
R E T L E H S E A A I H F M N
R Y A O I M L M Y R T R Z B I
U M E C D A S W G R Y H T I S
B O U O V F J S A M A R V N T
K V M H T P Z E N Z T R T G T
E V Z C S O H B Q O C P J M W
H W G A B C A N D Y W J U K I
C C E K K W H E A T L A M P N
I F V H H Y W S P M C N A Z P
M Z U J T W G W W Y D C Z J R

CANDY
CHOCOLATE
EWE
FEBRUARY
HEART
HEATLAMP
LAMB
LAMBING

RAM
SHELTER
SINGLE
SNOW
TRIPLET
TWIN
VALENTINE
WEATHER



Suffolk
K-O-R-S
Suffolk
K-O-R-S

HRSTATE

7				3	

CUMLTSORO

1						13			8

BEHCER

		4		11		

FENHRTOTU

						5		15		2	

BIGLAMN

10	9			6	14	12	

W			'			W						y		V																								?	
1	2			3		4	5		6	7		8		9	10	11	12	13	14	2	15																		

Juniors— Check out these upcoming Junior Suffolk Shows!

If you have a junior show that you would like to add to this list, please email the event to news@u-s-s-a.org. To find more details on these listings please visit: u-s-s-a.org or ujssa.org

June 15	Midwest Junior Preview Show, Missouri State Fairgrounds, Sedalia, MO website
July 4—7	2013 UJSSA National Junior Suffolk Sheep Show, Michigan State University, East Lansing, Michigan
July 21	Minnesota Junior Suffolk Sheep Show - Faribault, MN
August 1	2013 Midwest Regional Jr. Suffolk Show, Ohio State Fair - 5:30 PM

Notes from the UJSSA

UJSSA Raffle

Again this year, the UJSSA will be selling raffle tickets to raise money for the 2013 Junior Suffolk Show. Raffle tickets are \$5 per ticket or 5 tickets for \$20. This year's raffle prizes include a Golf Club Set (value approximately \$1600, donated by Rebecca & Josh Krinsky), a half-page, full color ad in *The Banner Sheep Magazine* (valued at \$450, donated by *The Banner Sheep Magazine*), and \$100 cash prize. To purchase raffle tickets, please contact a UJSSA Director.

UJSSA MEMBERS: *If any junior member would like to sell raffle tickets please contact a UJSSA Director. The UJSSA Member who sells the most tickets will receive a prize (check back in the next newsletter for updated information on the prize).*

Attention Michigan Suffolk Breeders!

Would you being to help the UJSSA plan and coordinate the 2013 National Junior Suffolk Show? The UJSSA is looking for volunteers to help with this year's events. If interested, contact UJSSA President, Tayler Wolff.

2013 National Junior Suffolk Sheep Show Sponsorship

Not able to attend NAILE? Or Didn't get asked to sponsor this year's upcoming junior show? Whether you have a specific class you would like to sponsor or just a general donation, check out the opportunities to support the next UJSSA Junior Show. Visit the USSA or UJSSA website and find the sponsorsheet to view available classes to sponsor. Contact the USSA Office to sign-up!

**UJSSA members are encouraged to apply for the 2013 scholarships!
Details will be posted in upcoming newsletters.**

★ Mark your calendars for....

2013 National Junior Suffolk Sheep Show!

July 4—7

Michigan State University

East Lansing, MI

★ Hotel Accommodations:
★ **Holiday Inn Express**
★ ***please book prior to June 12th as the room block expires at that time***
★ Rate: \$95 plus tax for rooms with 2 queen beds
★ Hotel Phone: 517.349.8700
★ Hotel Address: 2209 University Park Drive Okemos, MI 48864

A Message From the UJSSA President...

Happy February !

Hello Suffolk Sheep Enthusiasts,

I hope lambing is off to a good start for all of you. It has definitely been cold up in North Dakota these past few weeks which puts a strain on the lambs but they were able to survive it and are doing what every lamb does when they are little... PLAY!

On the 13th of January we had a conference call and talked about many things but the 2013 Junior Show was the main topic. As many of you know the Junior Show will be in East Lansing, Michigan where it will be held in conjunction with the All-American. The planning is going wonderful and we are looking forward to a very successful junior show. I would like to take the time to thank Deb and Randy Sanders for being our contacts in Michigan. Without you two the planning would not be going as smooth.

For many years now we have been selling raffle tickets to raise money for the Junior Association. This year the UJSSA will be selling raffle tickets to raise money for the 2013 Junior Suffolk Show. Raffle tickets are \$5 per ticket or 5 tickets for \$20. This year's raffle prizes include a Golf Club Set (value approximately \$1600, donated by Rebecca & Josh Krinsky), a half-page, full color ad in The Banner Sheep Magazine (valued at \$450, donated by The Banner Sheep Magazine), and \$100 cash prize. To purchase raffle tickets, please contact a UJSSA Director. If you don't feel like buying a raffle ticket here's another chance for you to help the juniors. Become a sponsor for The 2013 National Junior Suffolk Show. Whether you have a specific class you would like to sponsor or just a general donation, check out the opportunities to support the next UJSSA Junior Show. Contact the USSA Office to sign-up!

Happy Lambing!

Taylor Wolff

Check out the new UJSSA website!

www.ujssa.org



[View photos of the 2012 National Junior Suffolk Show!](#)

(click above)

2012 USSA Futurity Results

Pictures of futurity winners will be included in the February newsletter!

Placing	Exhibitor Name			Futurity Ewe Lamb	Total Points
1*	Katherine Newhouse	State Center	IA	Damman Suffolks 12-138	50
2*	Molly Jo Woods	Baylis	IL	LynLee 12029	50
3	Taylor Wolff	Oakes	ND	Quam 11023 RRNN	48
4	Molly Jo Woods	Baylis	IL	Skartvedt 4467	44
5	Ashley Burns	Jamestown	IN	LynLee 12012	16

*The tie for first place was broken by the exhibitor who had the most points at the National Junior Suffolk Show and/or NAILE Jr. Suffolk Show.



Katherine Newhouse
1st place—Damman Suffolks 12-138



Taylor Wolff
3rd place—Quam 11023

Thank you to the USSA members who nominated futurity lambs!

California

Mike & Alison Mann
Neumiller Suffolks

Colorado

Wagner Suffolks

Iowa

Cheryl Bierle
Damman Suffolks
Kimm Suffolks
Sandage Farms
Wayne Skartvedt Family

Idaho

Whispering Hills Suffolks - Matt Wolf & Family

Illinois

Phantom Hills Fitting & Training, Ethan, Annie & Ty Smith

Indiana

Five Star 'J' Farms, Richard & Cindy Jones
Silver Dollar Farms, Tad Thompson

Michigan

Renn-Vue Farms

Minnesota

Arndt Acres
Baumgartner Family Suffolks
Quam Suffolks

Montana

Dreher Family Suffolks

Nevada

Ruby Mountain Sheep Co., Cynthia Huckins

Oklahoma

Annuschat Suffolks

Oregon

Hawkins Farms Suffolks

Pennsylvania

Lyn Lee Farms, Gerald & Susan Clair
MacCauley Suffolks

Utah

Double L Livestock, Larry & Linda Pauly
Mayo Suffolk/Double L Livestock

Washington

Clift Livestock

SPOTLIGHT:

U S S A Futurity Program

Please visit the USSA website for complete details on the USSA Futurity Program. Please note that there will be some changes made to the USSA Futurity Program, more details to com.

The USSA Futurity Program is easy to participate in! All you have to do is:

1. Purchase a USSA Futurity nominated ewe lamb
2. Exhibit the nominated ewe in a Suffolk class(es).
3. Fill out the Futurity Points Form (see example to right).
4. Submit Futurity Points Form to the USSA Office.

2012 National Suffolk Futurity Point Record Form

_____ have shown the Suffolk Ewe, _____
Association Registry Number _____

This Suffolk was placed _____ in a class of _____ ewes, and was shown in _____
the _____ (year or years) _____ division at the following livestock show: _____
_____ on _____ 2012.

This placing is verified by the superintendent of the above listed show.

Superintendent (please print) _____ (Signature)

Superintendent's phone number _____ (Title)

Who can participate in the USSA Futurity Program? All juniors who meet the requirements for the Junior Show at the North American International Livestock Exposition are eligible. Rules for the NAILE are:

1. The participant must be 21 years old or younger as of January 1st. There is no lower age limit but the exhibitor must be physically able to show their own sheep.
2. Junior members must be present to show their own sheep unless physically impaired.
3. Animals ownership must be registered with the USSA office by September 1, 2013. Ownership must be in the exhibitor's name. Youth partnerships, farm names or family ownerships are not permitted.
4. Exhibitors must have current youth or lifetime membership in the USSA.

Who can nominate a futurity ewe? Any USSA breeder can nominate a ewe lamb through one of the following sale options; consignment sales, organized production sales, or organized internet sales. To see complete details on nomination rules visit the USSA [website](#) or contact the USSA Office.

What awards are available to USSA Futurity participants? Premiums are paid to top point exhibitors and the winner receives a trophy given by Quam Suffolks.

Please review the USSA Futurity Rules*
for complete details on this great program!

***For those breeders interested in nominating a ewe lamb in 2013 and juniors interested in purchasing a nominated ewe lamb in 2013—STAY TUNED—rules will be revised for 2013 USSA Futurity Contest and included in an upcoming newsletter!**

Lambing Time Management Tips

By: Dr. Scott Greiner, Extension Animal Scientist, Sheep, VA Tech

Reprinted from [Virginia Extension Cooperative](#), Livestock Update, January 2008

4 Weeks Before Lambing

1. Shear the wool from around the head, udder and dock of pregnant ewes. If covered facilities are available, shear the ewes completely. Sheared ewes are more apt to lamb inside, the inside of the barn stays drier because less moisture is carried in by the ewes, more ewes can be kept inside, and it creates a cleaner environment for the lambs and the shepherd. Sheared ewes must have access to a barn during cold, freezing rains, and they must receive additional feed during periods of extremely cold temperatures.
2. Vaccinate ewes for overeating disease and tetanus. These vaccines provide passive immunity to baby lambs through the ewes' colostrum until they can be vaccinated at 4 to 6 weeks of age.
3. Check and separate all ewes that are developing udders or showing signs of lambing. Check and remove heavy ewes once a week during the lambing season. Increase the grain on all ewes showing signs of lambing to 1 lb daily, and feed all the good quality grass/legume hay they will clean up.
4. Observe ewes closely. Ewes that are sluggish or hang back at feeding may be showing early signs of pregnancy disease.
5. Shelter ewes from bad weather.
6. Get lambing pens and lambing equipment ready. There should be one lambing pen for every ten ewes expected to lamb.
7. Stock lambing supplies such as iodine, antibiotics, stomach tube, injectable selenium/Vitamin E, OB lube, lamb puller, ear tags, etc.

At Lambing Time

1. Check ewes on a frequent basis (every 3 to 4 hours), as feasible. Do not check ewes in the middle of the night. Activity at that time may stimulate ewes to lamb two to three hours before they normally would.
2. Assist ewes which have been in labor more than one hour and not yet delivered lambs.
3. After lambs are born, move the ewe and her lambs to a lambing pen with a minimum dimension of 5' X 5'. Check the ewe's udder to see that she has milk, strip each teat to remove the waxy plug, and make sure lambs nurse within 30 minutes.
4. Colostrum is critical for baby lamb survival. For ewes without milk or for lambs that fail to nurse, lambs must be given colostrum via a stomach tube. If sheep colostrum is not available, cow or goat colostrum should be used. Colostrum can be frozen in ice cube trays or stored in plastic storage bags. Colostrum should be thawed using indirect heat. Thawing by direct heat destroys the antibodies that are present. Lambs should receive 20 ml (cc) of colostrum per pound of body weight. It works best if feedings can be 4 hours apart.
5. Only use a heat lamp if lambs are weak and chilled. Avoid danger of fire by hanging heat lamps 3' above the bedding and in the corner of the lambing pen. Block off the corner so that the ewe cannot get under the lamp.
6. Check on the health of the ewe and her lambs at least three times daily. Lambs that are lying down should be made to get up. Those that fail to stretch after getting up may have a problem that requires further examination. The biggest cause of baby lamb mortality is starvation.
7. Virginia is a selenium deficient state. If selenium deficiency has been a problem, lambs should be given an

(Continued on page 11)

injection of 0.25 mg selenium per 10 lb of body weight immediately after birth. A good quality mineral provided to the ewe flock on a year-round basis has been shown to be the best way to prevent selenium deficiency.

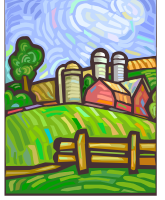
8. A general rule of thumb is for the ewe and her lambs to stay in the lambing pen one day for each lamb. Weak or small lambs may require a longer stay.
9. Ewes should receive fresh water and high quality hay the day of lambing. Don't feed grain until the second day. One pound of grain plus 5 lbs of good quality hay will take care of their needs until moving to a mixing pen.
10. If ewes were not treated for internal parasites within 3 weeks of lambing, they should be treated prior to removal from the lambing pen.
11. Keep records on all ewes, noting those that had problems. Individually identify lambs so they can be matched with the ewe. The ability to match ewes and lambs is important to monitor performance, and individual identification is critical for making selection and culling decisions.
12. Move ewes and their lambs from lambing pens to mixing pens. Make sure lambs are matched up well with their mothers before moving to larger groups. Ewes with twins should be receiving 2 lbs of a 15% crude protein grain mix and 5 lbs of good quality hay daily. Ewes with singles should be receiving 1 lb of a 15% crude protein grain mix and 5 lbs of good quality hay daily.
13. All lambs should be docked and castrated by the time they are 2 weeks old.
14. Lambs on a winter-lambing program should have access to a high-quality creep feed by the time they are 7 days old. Creep feeds should contain 18% to 20% crude protein and be low in fiber. Make sure the source of protein in commercially prepared lamb creep pellets is all natural protein and does not contain urea. Maintain at least a 2:1 calcium to phosphorous ratio in the feed by adding 1% feed grade limestone. Calcium to phosphorous ratios of less than 2:1 may lead to urinary calculi. When constructing a creep area, keep the following points in mind: 1) place the creep in a convenient location close to an area where the ewe flock congregates; 2) have openings on at least two sides of the creep and several openings per side; 3) keep the creep area clean and well bedded; 4) place a light over the creep to help attract lambs. Sunlight shining into the creep area works well; 5) keep feed fresh and provide clean water in the creep; and 6) construct the creep feeder so that lambs cannot stand and play in it. Allow 2" of trough space per lamb.

Post-Lambing

1. Vaccinate lambs for overeating disease at 4 weeks of age. Booster the lambs for overeating disease one week before weaning.
2. Wean winter born lambs at 2 to 3 months of age and spring-born lambs at 3 to 5 months of age. Weaning age will vary depending on the marketing plan for the lambs. Generally, winter-born lambs should be weaned at an earlier age and managed to grow rapidly and be sold in the spring at a young age. Spring-born lambs should be weaned at an older age, derive a large percentage of their growth from forage and therefore grow at a slower rate, and be marketed in the late fall and winter at an older age compared to winter-born lambs.

For ewes weaned at 2 to 3 months of lactation, supplemental grain should be discontinued and forage quality decreased one week prior to weaning. Fasting ewes for 72 hours without feed and water at weaning has been used successfully to prevent mastitis. During periods of high temperatures, make sure ewes have access to shade.

Suffolk Associations Close to Home



Ever wondered if there is a state or regional Suffolk Association near you? The following is a listing of active state and/or regional Suffolk Associations across the United States. If there is an active local Suffolk Association that has been overlooked, please contact the USSA Office. Local Suffolk Associations are encouraged to share news, events or updates through the Suffolk Newsletter!

CALIFORNIA SUFFOLK AND HAMPSHIRE SHEEP BREEDERS' ASSOCIATION

Website

President: Greg Ahart, Sacramento, CA Phone: 916.716.0089 Email: greg.ahart@superiorfarms.com
Secretary: Mary McMurphy, Oroville, CA Phone: 530.570.9856 Email: cshsba@gmail.com or
echobasinmcm@yahoo.com

ILLINOIS SUFFOLK SHEEP ASSOCIATION

President: Bill Royer, Washington, IL Phone: 309-444-2356 Email: royerfarm@aol.com

IOWA SUFFOLK SHEEP ASSOCIATION

Website

Facebook Page

President: Kelly Werner, Grinnell, IA Phone: 641.236.4976 Email: kgang@iowatelecom.net

MINNESOTA SUFFOLK SHEEP ASSOCIATION

President: Jeremy Geske, New Prague, MN Phone: 612.756.1200 Email: jeremy.geske@gmail.com

MISSOURI SUFFOLK SHEEP ASSOCIATION

President: Amanda Bergsieker, Waverly, MO Phone: 660.232.1433 Email: ab_vettech@yahoo.com

MONTANA SUFFOLK SHEEP BREEDERS ASSOCIATION

Website

Contact: Jane Rath, Miles City, MT Phone: 406.232.1060

NORTHEAST SUFFOLK SHEEP ASSOCIATION

Website

Facebook Page

President : Josh Miller, Schoharie, NY Phone: 518-231-8113 Email: millers@midtel.net

OHIO SUFFOLK SHEEP ASSOCIATION

President: Barbie Casey, Email: bcasey@roadrunner.com

PENNSYLVANIA SUFFOLK SHEEP ASSOCIATION

Facebook Page

President: Alex Masser, Elizabethville, PA Phone: 570.847.1833 Email: almass412@yahoo.com

SOUTH DAKOTA SUFFOLK SHEEP ASSOCIATION

President: Duane Juntunen, Vienna, SD Phone: 605.881.3374 Email: jute@itctel.com

WISCONSIN SUFFOLK SHEEP ASSOCIATION

Website

Facebook Page

President: Kevin Slack, Lake Geneva, WI Phone: 262.903.5971 Email: kslackuffs@yaho.com

A Great Recipe for Ewe to Try!

Do you have a lamb recipe that is absolutely delicious and you want to share?
Do you have a child or junior that loves to cook? We'll feature their recipes, too!
Please email it to news@u-s-s-a.org and it may be featured in an upcoming newsletter!



Lamb Stew (with Shepherd's Pie variation)

2 lbs. lamb stew meat	3 large potatoes, peeled & cubed
2 Tbl. oil	4 medium carrots, sliced
4 cloves garlic, minced	1/2 cup celery, chopped
1 medium onion, chopped	1/2 apple, peeled and chopped
1 cup water	1—14 oz. can diced tomatoes
2 tsp. salt	2 Tbl. beef bouillon granules
1/2 tsp. pepper	2 Tbl. tapioca

Heat oil in a dutch oven. Add meat, garlic, and onion. Cook till meat is browned. Add all the other ingredients. Heat to boiling. Cover and simmer for two hours.

To make Shepherd's Pie: Use the same ingredients, omitting potatoes from the recipe. Instead, cook potatoes separately, and make mashed potatoes, seasoning as desired. After meat and vegetable mixture comes to a boil, simmer for 30 minutes and then place into a large casserole dish, top with mashed potatoes, and bake for 1 hour.

I
LUV
U

DID YOU KNOW FEBRUARY IS LAMB LOVERS MONTH?

TREAT YOUR VALENTINE TO SOME SUFFOLK LAMB!

BE MY
VALENTINE!

2013 USSA Breeders Directory

It's that time of year again to start thinking about 2013 USSA Breeders Directory and 2013 USSA Membership Dues. Once again this year USSA is partnering with Greg Deakin and Banner Publications to create the 2013 Breeders Directory. As always, this will be a magazine-quality, informational listing of USSA members that you can count on to keep in touch with other breeders within the association. In addition, the directory will contain up-to-date news, show results, pictures, sale information, breed standards and more. If you are interested in advertising in this year's directory, please contact Casey by phone at 309.785.5058 or by email at ads.banner@sybertech.net.

ATTENTION SUFFOLK BREEDERS

Plan to be part of the 2013 Breeders Membership Directory

All United Suffolk Sheep Association Members will be listed in the 2013 Directory. Complete addresses, phone numbers, email addresses & websites will be listed for all new or renewed memberships paid to the USSA office by February 28. The Banner Sheep Magazine will publish the directory in a colorful magazine format which will be mailed to all paid members of the USSA. Additional copies will be distributed throughout the year at major Suffolk functions by the USSA.

AD SIZE	DIMENSION	Black & White	Black & 1 Color	Full Color
1 Page Ad	7 1/4" wide x 10" deep	\$400	\$475	\$600
1/2 Page Ad	7 1/4" wide x 5" deep	\$200	\$230	\$300
1/4 Page Ad	3 1/2" wide x 5" deep	\$100	\$120	\$150

Breeders & Commercial Advertisers Deadline is February 28

Contact THE BANNER Now!

Phone: 309/785-5058
Fax: 309/785-5054
Email: ads.banner@sybertech.net
www.bannersheepmagazine.com

BE PART OF IT!

2012 United Suffolk Sheep Association Directory



~UJSSA Members~

Consider purchasing a futurity nominated ewe in 2013!

Sheep Industry Updates of Interest to Ewe!

Veterinary Awards Announced

Reprinted from the ASI Weekly, American Sheep Industry Assn .

The U.S. Department of Agriculture (USDA) announced this week more than 40 awards to help veterinarians repay a portion of their veterinary school loans in return for serving areas of the United States lacking sufficient veterinary resources. The awards, totaling more than \$4.6 million, were made by USDA's National Institute of Food and Agriculture (NIFA) through the Veterinary Medicine Loan Repayment Program (VMLRP) and will benefit 30 states.

Veterinarians are critical to America's food safety and food security, and to the health and well-being of both animals and humans. Major studies indicate significant and growing shortages of food-supply veterinarians and veterinarians serving in certain other high-priority specialty areas. A leading cause for this shortage is the heavy cost of four years of professional veterinary medical training, which can average more than \$150,000, according to the latest American Veterinary Medical Association survey of graduating veterinary students.

Recipients are required to commit to three years of veterinary service in a designated veterinary shortage area. Thirty states will fill at least one shortage area through VMLRP. Texas will fill four shortage areas and Iowa, Minnesota, Montana, Oklahoma and South Dakota will each fill three shortage areas.

A map showing all designated shortage areas and areas that were filled is available at www.nifa.usda.gov/nea/animals/in_focus/vmlrp_12/vmlrp_shortage_situation_usmap.html.

2012 Scrapie Annual Report Available

Reprinted from the ASI Weekly, American Sheep Industry Assn .

The National Scrapie Eradication Program continues to make excellent progress in fiscal year (FY) 2012. Published by the U.S. Department of Agriculture's Animal and Plant Health Inspection Service (APHIS), the report reviews the current progress of scrapie eradication in the United States.

In FY 2012, the percent of cull sheep found positive at slaughter, adjusted for face color, decreased to 0.0057 percent. This measure of prevalence has decreased 96.2 percent since slaughter surveillance started in FY 2003 and 24.7 percent since FY 2011. There was also a 47-percent decrease in the number of infected and source flocks identified during FY 2012 compared to FY 2011.

Other topics reviewed in this report include on-farm surveillance, total animals sampled and positive scrapie cases.

The FY 2012 report is available at www.aphis.usda.gov/animal_health/animal_diseases/scrapie/downloads/yearly_report.ppsx.

(Continued on page 15)

H-2A Shepherd Wages Increased in Ariz., Nev., Ore. and Wash.

Reprinted from the ASI Weekly, American Sheep Industry Assn .

Effective Jan. 8, the Department of Labor increased the wage rates for H-2A shepherding and goat herding jobs in Arizona, Nevada, Oregon and Washington, and decreased wage rates in New Mexico, Oklahoma and Texas. Shearing, open-range production of livestock and custom combine operations were also re-evaluated.

According to American Sheep Industry Association (ASI) officials, "The industry is very concerned with this wage increase as it nearly doubles labor costs in Arizona and Nevada. The decisions published in the Federal Register create an immediate and drastic increase in wages, yet the sheep industry had no advanced notice that this was under consideration.

"Further, ASI strongly questions the methodology used to arrive at the wage rate increases. For example, wage rates in Nevada were based on data collected in California because the states are adjoining. The situation in these two states is very different and the huge wage increase would be a severe financial hardship."

The Office of Foreign Labor Certification used three main principles in establishing the prevailing wage rates for states that had no official wage rate findings:

- where a state directly borders a state with a wage rate finding, that wage rate finding is assigned to the bordering state;
- where a state borders more than one state with wage rate findings, the findings of the state that is more adjoining are applied to the state with no wage rate finding; and
- where a state does not directly border a state with a wage rate finding but is within a U.S. Department of Agriculture farm production region that includes another state either with its own wage rate finding or to which findings were applied consistent with one of the other principles, that wage rate finding is applied to the state with no wage rate finding.

Applying these rules, the prevailing wage rates for shepherding and goat herding were all based on data collected in California and Colorado. Wages for Idaho, Montana, New Mexico, North Dakota, Oklahoma, Texas, Utah and Wyoming were based on Colorado information resulting in a prevailing wage rate of \$750 per month. Arizona, Nevada, Oregon and Washington were based in data collected in California, which is reflected in the \$1,422.52 wage rate per month.

"We have shared and continue to express our immediate concerns and objections with members of the congressional delegations of the states impacted by the DOL's announcement, as well as with congressional leadership. We are particularly disturbed that a decision having such a significant economic impact to sheep producers in these states was not discussed with the industry before it was made effective," said Peter Orwick ASI executive director.

The full details are available in the Federal Register at www.gpo.gov/fdsys/pkg/FR-2013-01-08/pdf/2013-00115.pdf.

Learning Opportunities

Sheep Shearing School to be held at Lincoln University (MO)

Lincoln University Cooperative Extension with Dr. Helen A. Swartz presents Sheep Shearing School to be held at George Washington Carver Farm, 3804 Bald Hill Road, Jefferson City, MO 65102, Wednesday, March 13, 2013, 8:00 a.m. - 5:00 p.m. Registration fee: \$50.00, lunch is provided. For more information and registration, contact: Vonna Kesel, phone (573) 681-5312, email: KeselV@LincolnU.edu, visit www.lincolnu.edu/web/programs-and-projects/sheep-goat-and-value-added-fiber-program.

Certified Wool Classing School to be Held in Idaho

Reprinted from the ASI Weekly, American Sheep Industry Assn .

A Certified Level I Wool Classing School is scheduled for Feb. 18-20 in Idaho. The school will begin at the West Jefferson School District Conference Room in Terreton, Idaho, and the shearing site is west of Mud Lake at the U.S. Sheep Experiment Station corrals.

The focus of the school is to provide the U.S. sheep industry with trained wool classers who can assist in improving the quality of the domestic wool clip, which is imperative to American wool becoming more competitive and available in the international as well as domestic markets.

Some of the topics to be covered include wool fiber growth, objective measurement of wool, genetic selection programs, wool contamination, handling practices and packaging, labeling and marking. To fine tune the skill of wool classing, students will be given the opportunity to work through and grade a number of wool samples. At the shearing site, students will work with a very experienced wool classer who works in most of the western states during shearing season and handles a wide variety of wool.

The cost of the classing school is \$175 per student and includes all educational materials, a wool resource notebook, wool samples and a wool handling and shearing DVD. Class size is limited to 18.

Additional information for the course can be obtained by contacting Ron Cole, American Sheep Industry Association wool education consultant, at 970-302-4117 or ihrcole@comcast.net.

Howard Wyman Sheep Industry Leadership School—July 14-17, 2013 in San Angelo, Texas

Dr. Frank Craddock, Texas A&M AgriLife Research and Extension Service, will be our 2012 coordinator. Interested individuals may apply by completing a brief application and short essay. A group of 26 participants, age 20 or older, will be selected to attend. The registration fee is \$200 per person and participants are responsible for their own travel expenses. NLFA covers the cost of food, lodging and tour-related expenses during the school. No fee is required until after the applicant is selected. Applicants will be notified in early May.

How to Apply: There is no fee to apply. Complete your application form (pdf) and submit it electronically no later than May 3, 2013. For question or more information, call the NLFA office at 503.364.5462 or email us at info@nlfa-

Suffolks Today And Tomorrow Conference Commemorative Print

This commemorative print was created by well known livestock artist CJ Brown, during the Suffolks Today and Tomorrow Conference held on June 29, 2012 in Sedalia Missouri. Prints can be ordered with or without conference information included on print.

Prints are only available for purchase through the United Suffolk Sheep Association. Prints are \$80 each (price includes shipping). To order prints, please contact the USSA Office by phone (641.684.5291) or email (info@u-s-s-a.org).





Looking for the following to include in the Suffolk Newsletter:

Photos, news, events, recipes, helpful hints & tips, educational opportunities and questions for the question and answer section! Or anything else you would like to share!

Calendar of Events

Have a Suffolk related event you would like to add to the calendar of events? Email your event to: news@u-s-s-a.org. The newsletter may not contain all upcoming events. To find a full listing, please visit our website: www.u-s-s-a.org and www.ujssa.org.

March

- 1 Last day to take advantage of the reduced rate for 2012 Membership Dues and to be listed in the 2012 USSA Directory.
- 13 Lincoln University Sheep Shearing School, Jefferson, MO [visit website](#)

April

- 5 Illini Spring Sale, Bloomington, IL
- 13 California Ram Sale, Tulare, CA [website](#)
- 26—27 National Cornbelt Sale, Des Moines, IA
- 30 - May 1 Stars of the North Online Ewe and Stud Ram Sale, www.wlivestock.com



May

- 9-11 Big Ohio Sale Weekend, Eaton, OH
- 25-26 Great Lakes All Breeds Show & Sale, Wooster, OH
- 30— June 1 Nugget All-American Show and Sale including the National Suffolk Sale, Sparks, NV

June

- 15 Midwest Junior Preview Show, Missouri State Fairgrounds, Sedalia, MO [website](#)
- 25-29 Midwest Stud Ram Sale, Sedalia, MO [website](#)

July

- 4-7 2013 UJSSA National Junior Suffolk Sheep Show, Michigan State University, East Lansing, MI
- 14—17 Howard Wyman Sheep Industry Leadership School, San Angelo, Texas [website](#)
- 19-20 Crossroads of the West All-Breeds Sheep Sale, Heber City, UT
- 20 Minnesota Suffolk Sheep Association State Show - Faribault, MN
- 21 Minnesota Junior Suffolk Sheep Show - Faribault, MN

August

- 1 Deadline for the USSA Scholarship and Let's Grow Suffolks Scholarship applications
- 1 2013 Midwest Regional Jr. Suffolk Show, Ohio State Fair - 5:30 PM
- 17 Iowa Hawkeye Suffolk Sale, Des Moines, IA

**United Suffolk Sheep
Association**

PO Box 995
Ottumwa, IA 52501

Phone: 641.684.5291

Fax: 641.682.9449

E-mail: info@u-s-s-a.org



"The Breed in the Lead"

We're on the Web!

www.u-s-s-a.org

Suffolk Scenes

IT'S LAMBING SEASON!

This is one of the best times of the year for a Suffolk Enthusiast! Capture images of those spunky little Suffolk lambs and email them into the office! Over the next issues of The Suffolk Newsletter your photo could be featured here...

Classified Ads

USSA Members only. Ads are free. Must be sheep related: animals, vehicles, trailers, equipment, transportation, working dogs, etc. Include your contact information. Email you ad to: news@u-s-s-a.org. The newsletter may not contain all of the classified ads or include photos that are posted with the classified ad. To find a full listing, please visit our website: www.u-s-s-a.org.

FOR SALE: Fall Born Frame Type Ram Lambs—Show or stud prospects

1 Fall Born Frame Type Ewe Lamb—Show prospect

All are NN/RR.

Sired by Big Rig the huge yearling ram we showed in Louisville this year.

Price: Fall Born Frame Type Ram Lambs - \$1000-\$1500 Fall Born Frame Type Ewe Lamb - \$500

For More Information: Ocean State Suffolks Joe and Vonnie Young P.O. Box 287 - Tom Bean, TX

Phone: 817-239-7879. or E-mail at oceanst8suff@yahoo.com

**Have a sheep related item to sell?
It could be listed here!**

Check out the USSA Facebook page!



Office Notes

Don't forget to register your 2012 born lambs before they turn one year of age!

If you sold bred ewes last fall, don't forget to fill out the breeding certificate on the back of the ewe's registration paper!

We Want Your Photos!

We would like to feature some photos in each of our newsletters of our members and their Suffolks! Whether you have old or new photos, all are welcome. We would also like to use some member photos for promotional materials. If you would like to submit photos, you can mail them to the office address, P.O. Box 995, Ottumwa, IA 52501, and then we can return them to you after we scan them. You can also email any photos to news@u-s-s-a.org. We look forward to seeing all your photos!

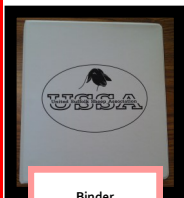
Website

If you have any information you would like included on our website, please let us know. We also welcome any ideas you may have to improve our website.

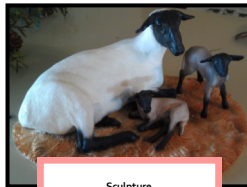
ITEMS FOR SALE

To purchase, contact the USSA Office

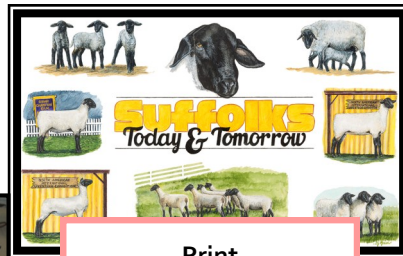
Plastic Sheet Protectors	\$0.20
USSA Window Clings.....	\$1.00
USSA Flock Memo Book.....	\$1.00
USSA Folders.....	\$2.95
USSA 3-ring Binders.....	\$9.50
Suffolks Today & Tomorrow Print.....	\$80.00
Limited Edition Suffolk Sculptures.....	\$195.00



Binder



Sculpture



Print



Window Cling



Folder