

Suffolk Newsletter

The United Suffolk Sheep Association

GET READY, GET SET, GO!

Summer is here...let the craziness begin. How is it that we look forward to spring (which we really haven't had this year) then summer and before you know it, it's September! Time does go a lot faster as I've gotten older.

When time flies by, things get overlooked... registrations, transfers, entry deadlines, etc. Please contact the USSA Office if we can assist with any of your last minute to-do list items! I ask that you be courteous to your fellow Suffolk breeders...if you are running behind, it's okay, it happens! I'll do everything possible to get your paper work done and back in time. However, I ask that you have a rush, please let me know when you need it in hand by. Also, unfortunately, rush fees apply to all work needed in less than two weeks. I'm usually not one to be hard on rushes during most of the year but in the summer, they apply. Sorry!

August 1st brings a couple of deadlines that I would like to remind everyone of....it will be here before we know it!

- Intent to run for the USSA Board—must be mailed, faxed or emailed (phone calls are not accepted)
- USSA and Let's Grow Suffolks Scholarship Applications

Lastly, I just want to remind you all about the USSA Futurity Program! Breeders, we encourage you to support and promote this program. Juniors, please consider participating in this great program. Also, for those juniors who are planning to show a purchased yearling ewe this year, consider the USSA's new Yearling Ewe Futurity. To find out details on the USSA Futurity Program, please visit the [USSA website](#)!

The office is here to work for you. Please let me know if I can be of any assistance!

Safe travels as your summer journeys begin and GOOD LUCK! It's time to let your Suffolk sheep shine!

Amanda Everts

Welcome!

...new members, returning past members (whom have not been active in recent years) and past UJSSA members who have joined the USSA during May 2013.



- ♦ Koop Suffolks, Cornersville, Tennessee
- ♦ Elizabeth Lignell, Warba, Minnesota
- ♦ Daniel Perry & Family, Montpelier, Indiana

June 2013

Volume 2, Issue 6

Inside this issue:

Member Spotlight	3
USSA Board Update	5
Notes from the UJSSA	6
Junior Show Schedule	7
Junior Show Entry Form	8
Suffolk Associations Close to Home	12
National Suffolk Show & Sale Results	14
Sheep Industry News	17
Calendar of Events	18
Member News	19
Learning Opportunities	20
Classified Ads	23
Sheep Resources	25

USSA BOARD OF DIRECTORS

Officers

President:

Rob Zelinsky (District 2)
Brookings, SD
605-354-8248
robzelinsky@yahoo.com
(Exp. 2014)

Vice President:

Bill MacCauley (District 4)
Atglen, PA
Home: 610-593-2907
Cell: 610-256-1608
billmac@johnrock.com
(Exp. 2013)

Treasurer:

Rex Quam (District 3)
Dodge Center, MN
Home: 507-374-2976
Cell: 507-251-2650
rjqum@frontiernet.net

District 1

Donna Mays (Exp. 2014)
Howe, ID
208-767-3405
lostriverdm@yahoo.com

Larry Pauly (Exp. 2013)
Delta, UT
435-864-2777
l_pauly@msn.com

Keith Pumphrey (Exp. 2015)
Walla Walla, WA
509-529-0140
jkpumphrey@hotmail.com

District 2

Virginia Gergen (Exp. 2015)
Lincoln, NE
402-477-7333
veegergen@yahoo.com

Amanda Dobson (Exp. 2013)
Lexington, MO
660-232-1433
ab_vettech@yahoo.com

District 3

Kim Ketcham (Exp. 2013)
Edwardsville, IL
Home: 618-656-5388
Cell: 618-581-3554,
kimkketcham@hotmail.com

Paul Skartvedt (Exp. 2015)
Radcliffe, IA
515-450-1302
skarby67@yahoo.com

District 4

Diane Russell (Exp. 2015)
Eaton, IN
765-288-4845
farmer1224@hughes.net

Lisa Webster (Exp. 2014)
Windham, ME
Home: 207-892-2161
northstarfarms@me.com

Be sure to mark your calendars for:

2013 UJSSA National Junior Suffolk Show • July 4-7

On the Michigan State University Campus, East Lansing, MI

For more information visit: www.ujssa.org

ARE YOU CONSIGNING EWE LAMBS AT AN UPCOMING SALE?

CONSIGNMENT SALE • ORGANIZED INTERNET SALE • ORGANIZED PRODUCTION SALE

Consider **futurity nominating** your ewe lambs in 2013!

To view the complete 2013 USSA Futurity Rules visit u-s-s-a.org or contact the USSA Office.

USSA MEMBER SPOTLIGHT

ANDRUS SUFFOLKS

LAVA HOT SPRINGS, IDAHO

Andrus Suffolks is a partnership of Ken and Jim Andrus of Lava Hot Springs, Idaho. They were raised in Kamas Valley, Utah where their father ran 400 commercial sheep.

Ken went to work for Brigham Young University in 1967 as the first livestock herdsman for the Animal Science Dept. He was in charge of the beef cattle and swine herds as well as the sheep flock which consisted of approximately 40 Suffolk ewes that had been purchased from Olsen Brothers of Spanish Fork, Utah. Twenty of these ewes were closely related to and may have been half sisters to the great stud ram "Thousand Peaks", who was a foundation ram and type changer for the whole Suffolk breed. This was the beginning of change in type from small, squatty sheep to Suffolks that had more frame, yet maintained bone and body capacity.

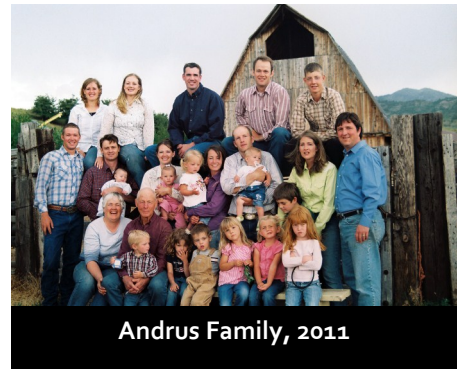
In the winter of 1970, Dr. David Ames of Kansas State University visited Utah and after having evaluated the sheep in Utah County, encouraged some breeders to consign sheep to the "Midwest Stud Ram Show and Sale" in Missouri. Olsen Bros. Jack Larsen, and BYU entered Suffolks and Mark Bradford of Spanish Fork entered Columbias. The event was held at the new livestock center at the University of Missouri in Columbia. Sales after were held in Sedalia at the State fair grounds. This was the beginning of several breeders from the west consigning to the "Midwest Stud Ram Show and Sale".

Ken bought some Suffolks of his own in 1970 and had his brother-partner, Jim run them in Idaho where Jim lived. In 1975 Ken left BYU and moved with his wife, Colleen, and new baby to Idaho to raise Suffolks full time. At first a farm was leased, then in 1980 they purchased the family ranch where they still live and run 300-325 Suffolk ewes and 300-350 commercial Angus cows in a cow-calf operation.

In the 1970's and early 80's Andrus Suffolks exhibited and sold sheep at most of the major sales in the mid west and west. These included the International Livestock Show at Louisville, Kentucky, Midwest Stud Ram Show and Sale, Top Of The Rockies In Colorado, The Golden Nugget in Reno, Nevada, The National Ram Sale, the Spanish Fork Ram Sale, the Idaho Ram Sale, the Idaho Falls Ram Sale, Rocky Mountain Ram Sale in Salt Lake City, and Craig Ram Sale in Craig, Colorado.

In 1975 we exhibited the Supreme Champion ewe in Sedalia, selling to Ben Huff of Oregon for \$8000, which was a world record price for a ewe selling at Public Auction. That record was of course broken the

(Continued on page 4)



Andrus Family, 2011



Working the sheep in the corral 2007



Highest World Selling 1975 Ewe.
\$8,000 to Ben Huff at Sedalia Midwest
Stud Ram Sale

(Continued from page 3)

next year and great fever and interest in Suffolks was in full swing. In 1980 we sold a ram at Sedalia for \$14,000 another 13,500 and one privately for \$15,000. The economic recession of 1979 and 80 caused the Suffolk bubble to burst and prices and general interest in Suffolks declined from there.

Ken and Jim have always sold quite a number of commercial rams and after the recession, that became the main focus of the operation. We have commercial (range) ram customers in Idaho, Utah, Wyoming, Colorado, Montana, Nevada, and South Dakota. We have sold commercial rams to Washington, California, and Arizona.

Raising Suffolk sheep had been good to our family. Ken and Colleen have eight children. Until lamb prices tanked the last two years, the Suffolks have always made more money for us than the cattle. Coyotes have been a problem, but good guard dogs have helped mitigate the loss.

Other than current low lamb prices, our biggest challenge has been to find outside bloodlines that will improve or maintain our breeding program. The club lamb sheep do not have enough size and the frame or show type lack the body capacity, bone, thickness, and livability. We approximately sell 150 commercial rams per year and have demand for many more. Our customers want rams that live, have body mass, ruggedness and transmit gain ability and a thick-bodied lamb that will grade.

Our journey in the Suffolk business has been a great one. We have traveled to many places and states we would not have otherwise seen. One year we sold sheep to Costa Rica and delivered them to Florida. We have met many quality people who have become life long friends.

We started with nothing. Suffolks have enabled us to raise a family, pay off a ranch and have a good life along the way. Our children learned to work.

Suffolk sheep have greatly enriched our lives.



2004 Idaho Ram Sale, Reserve Champion
Ram sold to Lava Lake for \$1000



Andrus's in the Sale Ring, 2004 Idaho Ram Sale



Franchise, the stud and Molly, the Shetland pony

Suffolks Today And Tomorrow Conference Commemorative Print

This commemorative print was created by well known livestock artist CJ Brown, during the Suffolks Today and Tomorrow Conference held on June 29, 2012 in Sedalia Missouri. Prints can be ordered with or without conference information included on print.



Prints are only available for purchase through the United Suffolk Sheep Association. Prints are \$80 each (price includes shipping). To order prints, please contact the USSA Office by phone (641.684.5291) or email (info@u-s-s-a.org).

The USSA Board working for the Suffolk Breed....

submitted by Diane Russell, District 4 Director

On the weekend of May 17-19, 2013, your USSA Board of Directors met in Kansas City for a working retreat and a strategic planning session. Eight directors traveled from each of the four districts, at their own expense, to do the work of the association. Board members unable to make the trip also connected with us via phone. Amanda Everts was amazing in handling the logistics and the planning that allowed the weekend to flow smoothly. Dennis Everson was our facilitator for Saturday's sessions, and Craig Huffhines, executive director for the Hereford Association, was a guest speaker. I'm Diane Russell, a director from District four, and I'm excited to share with you a brief summary and a few personal thoughts.

So, what did we do? After gathering from all directions, Friday night we got better acquainted and enjoyed a nice meal together. Saturday was intense, focused, and very productive. Throughout the process of our strategic planning session I was impressed that there were no personal agendas at the table, only honest, open discussion. Board members did not always agree, but there was always a sincere and warm regard and respect for each other. With a healthy appreciation and respect for our history, our task focused on looking forward. Most amazing to me was the similarity of thought as we worked independently, in small groups, and all together. Sunday morning started with a 7:00am work session and board meeting. By the time we left the meeting room at noon, we were exhausted, but strangely energized. The laughter was abundant, the handshakes were sincere, our commitment was genuine, and the tasks ahead were big.

I want you, our membership, to know that this is a special moment for your association. We will rely on you to help us move forward, and we will ask you to help us grow. Personally, I really enjoyed the opportunity to sit with my fellow board members and to work hard for our breed. This is a good group! Yes, we had lots of light moments, a few difficult moments, and a general feeling of "brain-drain". But this board has a wealth of vision, vitality, and wisdom. If we can stay open to change and focused on the big picture, exciting days will lie ahead of us. Stay tuned!



Miss the deadline for junior show entries?

NO WORRIES!

You can still submit junior show entries...get them sent today!

Juniors— Check out these upcoming Junior Suffolk Shows!

If you have a junior show that you would like to add to this list, please email the event to news@u-s-s-a.org. To find more details on these listings please visit: www.u-s-s-a.org or www.ujssa.org

June 8	Illinois Junior Preview Show, Woodford Co. Fairgrounds, Eureka, IL
June 15	Midwest Junior Preview Show, Missouri State Fairgrounds, Sedalia, MO website
July 4—7	2013 UJSSA National Junior Suffolk Sheep Show, Michigan State University, East Lansing, Michigan
18 –21	Northeast Youth Suffolk Sheep Show, Big E Fairgrounds, W.Springfield, MA
July 21	Minnesota Junior Suffolk Sheep Show - Faribault, MN
August 1	2013 Midwest Regional Jr. Suffolk Show, Ohio State Fair - 5:30 PM
August 17	Iowa Junior Suffolk Show, held with the Suffolk Open Show, Iowa State Fair, Des Moines, IA
September 8	Junior Class Show, Clay County Fair, Spencer, IA

A Message From the UJSSA President...

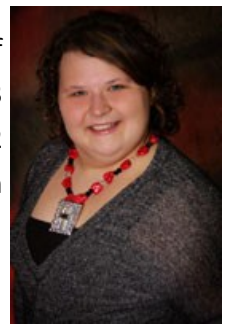
As summer is in full swing I hope all is going well for you and that you are enjoying everything your summer has to offer. Up here in North Dakota we have had a terrible start to summer with only having 3 days of sunshine in a month and half. I just keep telling myself that means I have more time to work with my sheep.

By the time you read this, I hope that you have sent your entry forms in and are anxiously waiting for this month to get over. I hope that you all have your animals picked out for the summer and that you are well on your way to having an awesome show string of sheep to take out this summer.

As always, if you have any questions at all, please contact any Junior Director---we would be happy to help you find transportation, or answer any show, ownership or entry questions you may have

Wishing you all the best as your lambs grow and you look forward to the summer show season!

Tayler Wolff
UJSSA President 2012-2013
Cell: 701-710-1542
Email- wolff.tayler@gmail.com



Summer Vacation

Notes for UJSSA Members

UJSSA Raffle

Again this year, the UJSSA will be selling raffle tickets to raise money for the 2013 Junior Suffolk Show. Raffle tickets are \$5 per ticket or 5 tickets for \$20. This year's raffle prizes include a Golf Club Set (value approximately \$1600, donated by Rebecca & Josh Krinsky), a half-page, full color ad in *The Banner Sheep Magazine* (valued at \$450, donated by *The Banner Sheep Magazine*), and \$100 cash prize. To purchase raffle tickets, please contact a UJSSA Director.

UJSSA MEMBERS: If any junior member would like to sell raffle tickets please contact a UJSSA Director. The UJSSA Member who sells the most tickets will receive a prize (check back in the next newsletter for updated information on the prize).

Attention Suffolk Breeders!

Would you be willing to help the UJSSA plan and coordinate the 2013 National Junior Suffolk Show? The UJSSA is looking for volunteers to help with this year's events. If interested, contact UJSSA President, Tayler Wolff.

2013 National Junior Suffolk Sheep Show Sponsorship

Not able to attend NAILE? Or Didn't get asked to sponsor this year's upcoming junior show? Whether you have a specific class you would like to sponsor or just a general donation, check out the opportunities to support the next UJSSA Junior Show. Visit the USSA or UJSSA website and find the sponsor sheet to view available classes to sponsor. Contact the USSA Office to sign-up!

2013 NATIONAL JUNIOR SUFFOLK SHOW

SCHEDULE OF EVENTS

July 4 – 7, 2013

Michigan State University Pavilion • South Barn Area & Arena • East Lansing, Michigan

Thursday – July 4th

- 8 am Entries may begin to arrive on fairgrounds
- 8 am Enter for Fitting Contest & drawing of animals
- 3-6 pm Pool Party – MSU Pool (with the All-American)
- 7 pm Judging Contest
- 10 pm DEADLINE for Sheep Arrival

Friday – July 5th

A complimentary lunch will be available from 11:30 – 1:00.

A complimentary snack will be available from 2:30 – 3:00.

- 7:30-9 am Market Lamb and Production Weigh-In
- 8:00 am Breakfast Social – Meet your UJSSA Directors!
- 9 am Market Lamb & Wether Dams Show followed by Market Lamb Showmanship
- 10 am DEADLINE for BREEDING SHEEP CHECK-IN
- 10 am Public Speaking Contest & UJSSA Director Interviews
- 12 pm Quiz Bowl
- 12:30 pm DEADLINE for LEADERSHIP CONTESTS MATERIAL
- 1 pm Pie & Ice Cream Social – MSU Pavilion (with the All-American)
- 3 pm Fitting Contest
- 6 pm Pizza Party & 3 on 3 basketball tournament – location TBA (with the All-American)

Saturday – July 6th

A complimentary lunch will be available from 11:30 – 1:00.

A complimentary snack will be available from 2:30 – 3:00.

- 7 – 8 am Exhibitor Breakfast – MSU Pavilion (with the All-American)
- 8 am Breeding Sheep (EWES) Show including Production Classes
Selection of Champion Ewe
- 3 pm Breeding Sheep Showmanship (or immediately following ewe show)
- 3:30 pm "Ewe" Lead with Wool Contest, Dress a sheep contest to follow
- 7 pm Banquet

Sunday – July 7th

- 7 – 8 am Exhibitor Breakfast – MSU Pavilion (with the All-American)
- 8:30 am Breeding Sheep (RAMS) Show including Production Classes
Selection of Champion Ram
- 12:00 Sub Lunch
- 1:30 pm State Flock
- 1:45 pm Team Showmanship Contest
- 2:15 pm Adult Showmanship
- 2:30 pm Good Shepherd Award Presentation
Release
- 12:00 am (midnight) All Sheep Off Fairgrounds

Miss the deadline for junior show entries?

NO WORRIES!

You can still submit junior show entries...get them sent today!

2013 National Junior Suffolk Show Entry Form

East Lansing, Michigan

July 4-7, 2013

Entries must be postmarked by **June 1, 2013**, to avoid the double entry fee. Use a separate form for each exhibitor. All exhibitors must be a current member of the United Junior Suffolk Sheep Association: Annual dues are \$15.00.

Name: _____

T-Shirt Size: Child S M, Adult S M L XL XXL XXXL

Address: _____

Daytime Telephone Number _____

City: _____ State: _____ Zip: _____ Email Address _____

Birthday: _____ Age on Day of the Show (7/6/2013) _____ Flock Name _____

Leadership Contests

Indicate age classification (age as of 7/6/2013) for the leadership contest(s) you plan to enter.

There are no additional entry fees for leadership contests.

Public Speaking

(option of PowerPoint)

____ Junior (14 & under)

____ Senior (15-22*)

Suffolk Quiz Bowl

____ Junior (14 & under)

____ Senior (15-22*)

"Ewe" Lead with Wool

____ Youth (8 & under)

____ Junior (9-14)

____ Senior (15-22*)

Dress a Sheep Contest

____ Junior

____ Senior

Fitting Contest

Pre-entry for the fitting contest is required to guarantee a sheep for this contest.

____ Junior (14 & under)

____ Senior (15-22*)

Judging Contest

____ Junior (14 & under)

____ Senior (15-22*)

Advertising Contest**

____ Junior (14 & under)

____ Senior (15-22*)

Essay Contest**

____ Junior (14 & under)

____ Senior (15-22*)

Scrapbook Contest **

____ Junior (14 & under)

____ Senior (15-22*)

____ Family

Photography Contest **

____ Junior (14 & under)

____ Senior (15-22*)

***Exhibitor Age** – to be a UJSSA member the individual, shall not have reached 22 years prior to January 1st of the current year. With this rule, there will be individuals who have reached 22 years old by the day of the show whom are eligible to participate.

****UJSSA members do not have to be present at the Junior Show to enter these contests.**

Number of people planning to attend the banquet Saturday evening: _____

There is no charge for the banquet to UJSSA members and families. Only those who specify above how many individuals will be in attendance to the banquet will have guaranteed seating.

Mail your payment and entry form to:

United Junior Suffolk Sheep Association

PO Box 995

Ottumwa, IA 52501

UJSSA annual membership dues (\$15/yr) _____

Total sheep entries: _____ x \$12.00 _____

Total Amount Enclosed _____

Important Notes to Exhibitors for the 2013 NJSS:

- There are campsites with electrical hook-ups on grounds. There are two water sources located in the campgrounds to fill water tanks. A dump station is located southwest of the facility. Any tent or vehicle that is occupied overnight must have a special permit displayed. If an exhibitor intends to stay at the campgrounds, the exhibitor needs to check-in with the All-American Office when they arrive in Michigan.
- A hotel room block has been made at the Holiday Inn Express (517.349.8700), just minutes from the show location on the MSU Campus. The room block is for the nights of July 3rd thru July 7th for \$95.00 per night. Please book your rooms prior to June 12th as the room block expires at that time. To receive this rate, please state that you are with the United Suffolk Sheep Association.
- To view Michigan State University visitors information go to: <http://msu.edu/visitors>

Division 1-6: Market Lambs & Wether Dams

* For Suffolk Wether Dams, please include USSA Registration Number. Appendix registered wether dams show as Suffolk-Cross dams.

** For Suffolk and Suffolk-Cross Wether Dams, please include birth date and sire and dam information.

Division 1- Suffolk Market Lambs

Division 3- Suffolk Yearling Wether Dams

Division 5- Suffolk-Cross Yearling Wether Dams

Division 2- Suffolk-Cross Market Lambs

Division 4- Suffolk Ewe Lamb Wether Dams

Division 6- Suffolk-Cross Ewe Lamb Wether Dams

Division	Private Flock Name & Number	USSA Reg. Number*	Birth date**	Sire Flock Name & Number**	Dam Flock Name & Number**

Division 7- Yearling Rams

a. Slick Shorn b. Production

Division 8-Slick Shorn Sr (Fall) Ram

Division 9- Sr Champion Slick Shorn Ram (no entry)

Division.10- Jr. Ram Lambs

a.Slick Shorn b. Production

Division 11-Jr Champ Slick Shorn Ram (no entry)

Division 12-Grand Champion Slick Shorn Ram

Division 13- Yearling Rams

a. Owned b. Bred & Owned

Division 14-Senior (Fall) Rams

a. Owned b. Bred & Owned

Division 15-Sr Champion Ram (no entry)

a. Owned b. Bred & Owned

Division 16- Junior Ram Lambs

a. Owned b. Bred & Owned

Division 17- Jr Champion Ram (no entry)

a. Owned b. Bred & Owned

Division 18-Gr Champion Ram (no entry)

a. Owned b. Bred & Owned

Division 19- Yearling Ewes

a. Slick Shorn b. Production

Division 20-Slick Shorn Sr (Fall) Ewes

Division 21-Sr Champ Slick Shorn Ewe (no entry)

Division 22- Jr. Ewe Lambs

a. Slick Shorn b. Production

Division 23-Jr Champion Slick Shorn Ewe (no entry)

Division 24-Gr Champ Slick Shorn Ewe (no entry)

Division 25-Yrlg Ewes/Weaned a Lamb

a. Owned b. Bred & Owned

Division 26- Yearling Ewes

a. Owned b. Bred & Owned

Division 27- Senior (Fall) Ewes

a. Owned b. Bred & Owned

Division 28-Sr Champion Ewe (no entry)

a. Owned b. Bred & Owned

Division 29-Junior Ewe Lambs

a. Owned b. Bred & Owned

Division 30-Jr Champion Ewe (no entry)

a. Owned b. Bred & Owned

Division 31- Gr Champion Ewe (no entry)

a. Owned b. Bred & Owned

Division	Private Flock Name & Number	USSA Reg. Number	Birth date	Sire Flock Name & Number	Dam Flock Name & Number

OFFICIAL CONSENT FORM

As an exhibitor of the National Junior Suffolk Show, I fully understand and agree to comply with all the rules listed on the United Junior Suffolk Sheep Assn website. Failure to do so will disqualify me and forfeit my premiums.

Exhibitor Signature _____ Date _____

Parent/Guardian Signature _____ Date _____

Parent/Guardian must also sign if exhibitor is under 18 years of age

**This statement must be signed, by the exhibitor listed on the application of this form, in order to participate in the show.*



2013 NATIONAL JUNIOR SUFFOLK SHOW

Now posted on the UJSSA & USSA Websites:

Entry Form • Rules • Show Schedule

UJSSA Board of Directors

www.ujssa.org

The UJSSA is on facebook!



Officers

President:

Tayler Wolff, Oakes, ND
701-783-4514,
wolff.tayler@gmail.com

Vice President:

Chris MacCauley, Atglen, PA
610-593-2907, 484-319-8376,
cmac.sheep@yahoo.com

Secretary:

Elizabeth Niedziela, Hadley, MA
413-585-9158, niedzielae@gmail.com

Treasurer:

Connor Vincent, Laurel, DE
302-858-2841, loveskat2@aol.com,
whatamelon@bwave.com

Directors

Codee Gilbertson, Sherwood, ND
701-833-6754, 22and5@gmail.com

Taylor Peck, Pittstown, NJ
908-328-4053, peck676@yahoo.com

Junior Coordinators

Amanda Dobson, Lexington, MO
660-232-1433, ab_vettech@yahoo.com

Rebecca Krinsky, Washington, OK
405-501-1593, krin-
skyhamps@gmail.com

Ambassador

Danielle Wittmann, New Glarus, WI,
608.214.5908,
wittmanndanielle@gmail.com

Interns

Paige Vincent, Laurel, DE
302-875-5369,
whatamelon@bwave.com

Jaclynn Kuntson, Centerville, SD
605-670-2147, ajknutson@iw.net

Hope Juntunen, Vienna, SD
605-868-0503, HJ3051@K12.sd.us

Andrew Slack, Lake Geneva, WI
262-903-1326, Kslack-
suffolks@yahoo.com

Kristina Weld, Warwick, MA
413-387-2615, suffolks25@gmail.com

ATTENTION UJSSA MEMBERS:

ARE YOU BUYING A EWE LAMB AT AN UPCOMING SALE?

Consider purchasing a **futurity nominated** ewe lamb in 2013!

NEWS FLASH! New this year—Yearling Ewe Futurity!

To view the complete 2013 USSA Futurity Rules visit u-s-s-a.org or contact the USSA Office.



A Great Recipe for Ewe to Try!

Do you have a lamb recipe that is absolutely delicious you want to share? Do you have a child or junior that loves to cook? We'll feature their recipes, too! Please email it to news@u-s-s-a.org and it may be featured in an upcoming

American Lamb Gyros with Tzatziki

Recipe and image from the American Lamb Board. To see more recipes from the American Lamb Board, visit www.americanlamb.com.

Servings: 6 to 8 servings

Preparation Time: 30 minutes

Cook Time: 40 to 50 minutes

3 pounds boneless American Lamb leg, butterflied

Salt and pepper, to taste

Lay lamb leg open on a cutting board. Trim off visible fat. Season lamb generously with salt and pepper; allow to sit at room temperature for 30 minutes prior to grilling.



Tzatziki

2 cups Greek yogurt

1 small cucumber, peeled, seeded and grated on large holes of grater

1 tablespoon fresh chopped dill

1 tablespoon fresh chopped mint

1 tablespoon extra virgin olive oil

1-1/2 teaspoons red wine vinegar

1 teaspoon sea salt

1/8 teaspoon freshly ground black pepper

8 authentic Greek pitas (not pocket bread)

1 pint grape tomatoes, sliced

1 small cucumber, sliced

1 bunch mint leaves



In a medium-sized bowl, combine yogurt, cucumber, dill, mint, oil, vinegar, salt and pepper; keep cold until serving. Preheat grill to medium-high. Grill lamb leg to medium-rare (remove from heat when thermometer registers between 130°F and 135°F, or to desired doneness). Rest lamb, lightly covered, for at least 10 minutes before serving. Slice lamb across the grain into thin slices. Place some lamb slices in the middle of each pita; top with tomatoes, cucumber slices, mint leaves and Tzatziki sauce; fold pita like a taco.

USSA DIRECTOR ELECTIONS

It's time to start thinking about directors elections. There will be a director opening in all four USSA districts. If you or a USSA member you know would like to be a candidate for the upcoming USSA Directors elections, here's a brief overview of your next steps:

1. Submit a letter of intent declaring that you are willing to be a candidate for the 2014 USSA Board of Directors Election. Letters of intent are due in the USSA Office by **August 1, 2013**. The letter must be faxed, emailed or mailed to the USSA Office, PO Box 995, Ottumwa, IA 52501. Letters of intent submitted through mail must be postmarked by the deadline date. **Phone calls are not acceptable.**
2. Within one week of the deadline, candidates must submit a brief personal bio as well as a photo to the USSA Office. The personal bio should be approximately one-half of an 8 ½ x 11 page. The content of candidate bios should discuss the candidate's qualifications, reasons they feel they are a good director candidate and any thoughts/ideas they may have on improving the association and Suffolk breed. *Candidates who do not submit a personal bio and photo will only have their name listed on the election ballot.*

MEMBER NEWS

Congratulations to USSA Director **Amanda (Bergsieker) Dobson** who was married on May 4, 2013 to Kyle Dobson in Higginsville, Missouri. Amanda and Kyle currently reside in rural Lexington, Missouri. Amanda is also serving as the President of the Missouri Suffolk Sheep Association.



Scholarship applications are posted!



UJSSA Members are encouraged to apply for the USSA Scholarship and the Let's Grow Suffolk Scholarship.

Each of these scholarships award \$1000.

The deadline to apply has been moved to August 1, 2013 - please note this change.

To see the specific guidelines for each scholarship, please review the applications on the [USSA](#) or [UJSSA](#) website.

SUFFOLK NEWSLETTER ADVERTISING RATES

1 page—\$200/month

1/2 page—\$100/month

1/4 page- \$50/month

Ads should be emailed to: news@u-s-s-a.org. Please include the ad size and which months the ad should be run. Ads must be "publish-ready". Submit ads by the 25th of the month to ensure they will be included in the next newsletter.

2013 National Suffolk Show & Sale

May 30 thru June 1
John Ascuga's Nugget Casino
Sparks, NV

BREEDING SHEEP - RAMS



Champion Ram, Sr. Champ.
Dreher Family Suffolks, Lot 21



Res. Champion Ram, Res. Sr. Champ.
Chuck Ream, Lot 100



Jr. Champion Ram
WHS, Matt Wolf & Family, Lot 34



Res. Jr. Champion Ram
Hawkins Farms Suffolks, Lot 44



Champion Suffolk Flock
Double L Livestock, Larry & Linda Pauly

2013 National Suffolk Show & Sale

May 30 thru June 1
John Ascuga's Nugget Casino
Sparks, NV

BREEDING SHEEP - EWES



Champion Ewe, Sr. Champ
Double L Livestock, Lot 66



Res. Champion Ewe, Res. Sr. Champ
Pumphrey Family Suffolks, Lot 74



Junior Champion Ewe
Double L Livestock, Lot 68

No Image Available

Res. Junior Champion Ewe
Beaver Creek Ranch, Lot 109

Visit the USSA [Website](#) to see more photo!

2013 National Suffolk Show & Sale

May 30 thru June 1

John Ascuga's Nugget Casino
Sparks, NV

WETHER DAMS



Champion Ewe, Sr. Champ
Estes Show Lambs, Lot 509

No Image Available

Reserve Champion Ewe, Jr. Champ
Estes Show Lambs, Lot 510



Res. Sr Champion Ewe
Dipper Tee Sheep, Lot 515



Reserve Jr Champion Ewe
Estes Show Lambs, Lot 511

WETHER SIRES



Champion Ram
Joe Olsen, Lot 504

Visit the [USSA Website](#) to see
more photo!

Sheep Industry Updates of Interest to Ewe!

VetGRAM App Released

Reprinted from the ASI Weekly, American Sheep Industry Assn .

The Food Animal Residue Avoidance Databank program announced the launch of its first mobile application for smartphones and other mobile devices that use the Android operating system.

VetGRAM is a resource that provides comprehensive information about Food and Drug Administration-approved food animal drugs, including approved indications, mandatory withdrawal times for various products from food animals, tolerance levels for active ingredients and other critical information for both major and minor food animal species, including sheep.

This new app carries out user-defined searches and accesses all information in VetGRAM databases, without the need for internet connectivity.

From the front page, users can select a species to search to view label information directly. In addition, VetGRAM Mobile App provides easy access to other useful resources, including

- a complete listing of products that are approved for use in food animals;
- a convenient list of drugs that are prohibited for use in food-producing animal species;
- a list of requirements for legal extra-label drug use (ELDU) in food-producing animal species; and,
- a handy link to the American Veterinary Medical Association's Decision Algorithm for ELDU in food animals.

Users with iPhones, iPads or other non-Android devices can still access the VetGRAM databases through the mobile-friendly website.

Lamb Blog Ranked #1

Reprinted from the ASI Weekly, American Sheep Industry Assn .

A sheep blog posted by Edward Avalos, Under Secretary for Marketing and Regulatory Programs with the U.S. Department of Agriculture (USDA), ranked as USDA's most viewed blog last week, according to USDA public affairs.

Avalos' blog, Responding to the Challenges of the U.S. Sheep and Lamb Industry, a multi-faceted approach to supporting the sheep and lamb industry, is available at <http://blogs.usda.gov/2013/05/09/responding-to-the-challenges-of-the-u-s-sheep-and-lamb-industry>.

Cargill Lamb Feed Recall

Reprinted from the ASI Weekly, American Sheep Industry Assn .

Cargill's animal nutrition business this week announced a voluntary recall of Showmaster® S-Series Show Lamb Feed (BW) because it contained incorrect sodium molybdate levels. To date, there are 170, 50-pound bags of feed still out in the market.

The affected products were manufactured at Cargill's Burlington, Wash., facility between March 1 and March 15 and were sold only in Washington and Idaho.

The recall applies only to Packaging Date Codes (lot numbers) of 38306326464, 38306726610 and 38307426757.

Customers should return remaining products to their local distributor for a full refund. For more information, call toll free [509-771-1439](tel:509-771-1439).

Calendar of Events

Have a Suffolk related event you would like to add to the calendar of events? Email your event to: news@u-s-s-a.org. Event flyers, show rules and entry forms can be found on the USSA website event page. The newsletter may not contain all upcoming events. To find a full listing, please visit : www.u-s-s-a.org or www.ujssa.org.

June

- 8 Illinois Junior Preview Show, Woodford Co. Fairgrounds, Eureka, IL
- 8 Quam Suffolks and Hampshires 1st Ever ET/Young Guns on Farm Sale. Viewing 10 to Noon, Sale starts at Noon, 8533 Co 30 Blvd, Wanamingo, MN [website](#)
- 15 Midwest Junior Preview Show, Missouri State Fairgrounds, Sedalia, MO [website](#)
- 25-29 Midwest Stud Ram Sale, Sedalia, MO [website](#)

July

- 4-7 2013 UJSSA National Junior Suffolk Sheep Show, Michigan State University, East Lansing, MI
- 18 –21 Northeast Youth Suffolk Sheep Show, Big E Fairgrounds, W.Springfield, MA
- 19-20 Crossroads of the West All-Breeds Sheep Sale, Heber City, UT
- 20 Minnesota Suffolk Sheep Association State Show - Faribault, MN
- 21 Minnesota Junior Suffolk Sheep Show - Faribault, MN
- 26—27 NSIP Center of the Nation Sale, Clay County Fairgrounds, Spencer, IA

August

- 1 Deadline for the USSA Scholarship and Let's Grow Suffolks Scholarship applications
- 1 Deadline to submit intent to run for USSA Director position openings
- 1 2013 Midwest Regional Jr. Suffolk Show, Ohio State Fair - 5:30 PM
- 17 Iowa Hawkeye Suffolk Sale, Des Moines, IA
- 17 Iowa Junior Suffolk Show, held with the Suffolk Open Show, Iowa State Fair, Des Moines, IA

September

- 7 29th ANNUAL CHOTEAU SHEEP EXPO For more information go to www.choteausheepexpo.com.
- 8 Junior Class Show, Clay County Fair, Spencer, IA



2013 NSIP SUFFOLK ELITE & PERCENTILE REPORTS

To view [click here](#) or visit www.nsip.org and select elite/siresum than USA Terminal!

Midwest Stud Ram Sale

Suffolk Events:

Wednesday, June 26

Suffolk Show 7am

Thursday, June 27

USSA Board Meeting 8am

(location TBA)

Suffolk Wether Sires & Dams Show

(following Hampshire Show)

Friday, June 28

Sale—All Suffolks 3pm



Missouri State Fairgrounds

Sedalia, Missouri

www.midwestramsale.com

Quam Suffolks and Hampshires 1st ever

ET/Young Guns on Farm Sale!

Saturday June 8th, 2013

Viewing 10:00 to Noon, Sale Starts at Noon

Held at 8533 Co 30 BLVD. Wanamingo, MN



Quam 11015 RRNN

Sired by Quam
"HeadlineRR" and
dammed by a top

"Cowboy" daughter!

\$7,100 High Selling

Ram in farm sale going to
Russ Knutzen. Son's and
daughters will sell!!!



Quam 11097 RRNN

Our popular 3rd place Febru-
ary Hamp Ewe lamb last
year at Louisville! Sired by
Held 09-2910. A top ET son
of Held 09-2910 and grand-
kids will sell!!!!!!



Quam 867 RRNN

"Northern Connection"

Special highlight of the
sale will be a full ET
brother. Plus some NC ET
grandkids that are by of
the "30" buck!!!!!!

Free delivery to Sedalia!

For more info go to www.quamsuffolksandhampshires.com or call Rex at 507-251-2650. Thanks!

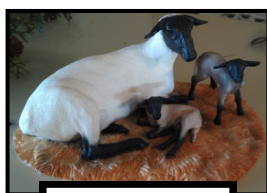
ITEMS FOR SALE

To purchase, contact the USSA Office

Plastic Sheet Protectors	\$0.20
USSA Window Clings.....	\$1.00
USSA Flock Memo Book.....	\$1.00
USSA Folders.....	\$2.95
USSA 3-ring Binders.....	\$9.50
Suffolks Today & Tomorrow Print.....	\$80.00
Limited Edition Suffolk Sculptures.....	\$195.00



Binder



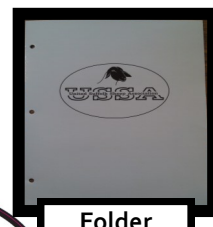
Sculpture



Print



Window Cling



Folder

Learning Opportunities

Grazing Workshop—Neosho, MO

Press Release

Lincoln University Cooperative Research (LUCR) is conducting a Grazing Workshop for Small Ruminant Producers, Friday, June 7th and Saturday, June 8th, 2013. It will be held at Crowder College in Neosho, MO.

"We are excited to be able to offer this kind of educational opportunity for producers," said Dr. Todd Higgins, Workshop Director and Associate Professor. "There are over 5,000 producers in Missouri raising small ruminants. This workshop is designed to have a significant impact on their management grazing practices. This in turn may help them lower production costs to have a positive impact on their bottom line."

The workshop consists of two days of classes and hands-on exercises. Workshop participants will hear presentations by grazing specialists, veterinarians and researchers as well as network with other producers. There will also be field exercises, demonstrations and vendors present for participants to interact with.

The Grazing Workshop for Small Ruminant Producers is open to all interested producers and vendors. For more information and to register, please contact Ms. Laurie Gilles by calling (573) 681-6189 or email GillesL@LincolnU.edu.

Maryland Classing School

Reprinted from the ASI Weekly, American Sheep Industry Assn .

The Maryland Sheep Breeders Association, in conjunction with the American Sheep Industry Association (ASI), is sponsoring an ASI Wool Classing School on June 18-20 at the Maryland State Fairgrounds.

The training will help prepare students to meet the Level I requirements of ASI's certified wool classing program. Ron Pope, Ph.D., ASI's raw-wool services consultant, will facilitate the class, which is being held in conjunction with the Maryland-Delaware wool pool on June 19.

Anyone interested in learning how to skirt and class wool is encouraged to attend. Also, fiber basics, production, packaging, labeling and ways to improve wool value will be reviewed. Class size is limited to 25 people and the cost is \$175 per person.

To register, contact Linda Shane at lshane@carr.org before May 29.

Montana Hosting Sheep Symposium

Reprinted from the ASI Weekly, American Sheep Industry Assn .

Integrating Advanced Concepts into Traditional Practices sheep symposium will be held at the Museum of the Rockies on the Montana State University campus in Bozeman, Mont., on June 19. All producers are encouraged to attend this informative and timely symposium.

A list of distinguished speakers has been released and includes Rodney Kott, Ph.D., Impact of Research on the Sheep Industry; David Anderson, Ph.D., The U.S. Lamb Market; Rebecca Cockrum, Ph.D., Applying Genomic Selection Technology to the Sheep Industry; Thomas Craig, DVM, Sheep Parasites: Problems, Resistance, New Products and Practices for Parasite Control; Rachel Frost, Ph.D., Alternative Grazing Strategies for Industry Diversification and Rangeland Improvement; Keith Inskeep, Factors Related to the Ewe That Affect Prolificacy in Sheep; Peter Orwick, ASI Initiatives for Industry Growth; Kim Vonnahme, Ph.D., Maternal Environment Impacts Fetal and Offspring Outcomes in Sheep; John Walker, Ph.D., Sheep, Black Swans and the Future of Agriculture; and Travis Whitney, Ph.D., Alternative Feeds: For a Temporary Crisis or Permanent Problem.

(Continued on page 21)

Learning Opportunities

(Continued from page 20)

Additional information can be obtained by contacting Patrick Hatfield at [406-994-7952](tel:406-994-7952) or hatfield@montana.edu.

The symposium is sponsored by the Western Extension, Research and Academic Coordinating Sheep Committee, the Western Section American Association of Animal Science, Montana State University, Department of Animal and Range Sciences and the Montana Wool Growers Association.

Howard Wyman Sheep Industry Leadership School—July 14-17, 2013 in San Angelo, TX

Dr. Frank Craddock, Texas A&M AgriLife Research and Extension Service, will be our 2012 coordinator. Interested individuals may apply by completing a brief application and short essay. A group of 26 participants, age 20 or older, will be selected to attend. The registration fee is \$200 per person and participants are responsible for their own travel expenses. NLFA covers the cost of food, lodging and tour-related expenses during the school. No fee is required until after the applicant is selected. Applicants will be notified in early May.

How to Apply: There is no fee to apply. Complete your application form (pdf) and submit it electronically no later than May 3, 2013. For question or more information, call the NLFA office at 503.364.5462 or email us at info@nlfa-sheep.org.

Advanced Grazing Workshop—Jefferson City, MO

Press Release

Lincoln University Cooperative Research (LUCR) is conducting an Advanced Grazing Workshop for Small Ruminant Producers, Friday, September 6th and Saturday, September 7th, 2013. The workshop will be held at the Lincoln University George Washington Carver Farm, 3804 Bald Hill Rd, Jefferson City, MO.

(Continued on page 22)

Have something to share?



We're looking for photos, news, show and sale information, classified ads, recipes, helpful hints & tips, educational opportunities and questions for the question and answer section to include in the Suffolk Newsletter! Or anything else that may be of interest to fellow Suffolk Breeders you would like to share! If you have any suggestions on other items that should be included in the Suffolk Newsletter, please send those ideas as well!

Please submit information by the 25th of the month to be included in the following month's newsletter. Information can be emailed to news@u-s-s-a.org or contact the USSA Office.

IS THERE SOMETHING YOU WOULD LIKE TO SEE IN THE NEWSLETTER?

EMAIL THE USSA OFFICE: news@u-s-s-a.org

Learning Opportunities

(Continued from page 21)

"We are excited to be able to offer this kind of educational opportunity tailored to small ruminant producers," said Dr. Todd Higgins, Workshop Director and Associate Professor. "There are over 5,000 producers in Missouri raising small ruminants. This workshop is designed to help devoted grazers fine tune their grazing management programs to optimize their return on investment."

The workshop consists of two days of classes and hands-on exercises. The keynote speaker is Kathy Voth, a renowned specialist at getting animals to eat undesirable plant species. "Kathy Voth uses simple animal behavioral techniques to produce impressive results in managing undesirable plant species in pastures, without the use of herbicides," says Higgins. Presentations by grazing specialists, veterinarians and researchers are on the agenda, as well as opportunities to network with other producers. There will also be field exercises, demonstrations and vendors present for participants to interact with.

The Grazing Workshop for Small Ruminant Producers is open to all interested producers and vendors. For more information and to register, please contact Ms. Laurie Gilles at (573) 681-6189 or email GillesL@LincolnU.edu.

Using Technology to Reach Producers

Reprinted from the ASI Weekly, American Sheep Industry Assn .

A recent series of educational workshops held online by Ohio State University (OSU) Extension experts geared toward sheep and goat farmers has drawn more than 1,300 views so far from farmers in Ohio, Indiana and West Virginia, OSU Extension educator, Jeff McCutcheon, says.

The 2013 Sheep and Goat WebEx Program Series was presented over four days at 18 sites statewide in February using a WebEx online format as part of an ongoing effort to reach as many producers as possible on issues relevant to growing and enhancing their operations.

"The need is there for this kind of programing, and based on feedback that we've gotten thus far, the program is a success," McCutcheon said. "A majority of participants, 93 percent, said they gained knowledge from viewing the program; and 63 percent said they planned to make a change to their operation based on the information learned through the program."

Topics for the series included:

- Vaccination Programs for Sheep and Goat Operations;
- Artificial Insemination Techniques of Sheep and Goats;
- Managing Pastures and Hay Fields after a Drought; and
- Use of EAZI-BREED CIDR for Sheep and Goat Operations.

The series is sponsored by the Ohio Sheep Improvement Association (OSIA), OSU Extension and the OSU Sheep Team and can be viewed online at <http://sheep.osu.edu/presentation-library/>.

Sheep For Profit School

The Pipestone Lamb and Wool Program is very excited about offering a Sheep For Profit School this July. This will be our 7th offering of this course with 111 past participants from 20 different states completing the course. The course is only offered once every two years.

Any help that you can provide in promoting this program would be greatly appreciated. You can simply forward this email to individuals and email lists who you think may be interested. I have also attached a news release that can also be used to promote the program.

This information can also be found on our web page www.pipestonesheep.com.

CLASSIFIED ADS

USSA Members only. Ads are free. Must be sheep related: animals, vehicles, trailers, equipment, transportation, working dogs, etc. Include your contact information. Email you ad to: news@u-s-s-a.org. The newsletter may not contain all of the classified ads or include photos that are posted with the classified ad. To find a full listing, please visit our website: www.u-s-s-a.org.

FOR SALE: 4 year old Stud Ram for sale "Red Label" Luxford 09-1309A RR

4 year old Stud Ram for sale. "Red Label" Luxford 09-1309A RR. We have successfully used this ram for 3 years and only due to cutting back on ewe numbers are we offering him for sale. He was a class winner at the 2010 Reno Sale. We have kept many daughters and he is in great shape. See his picture on our facebook page at www.facebook.com/keeversuffolks. He is reasonably priced.

For More Information: Jeff at 309-337-7359 or Ryan at 309-337-4075

FOR SALE: Reg Suffolks from the Oregon Coast

Reg Suffolks from the Oregon Coast - proven coming yearling ewes - lambs just weaned off. Shearing date June 22. 15 head to choose from with sires by Lost River and Kimm Suffolks. Stylish, easy keepers, and ready to go to work. \$175 choice, 3 or more \$150 each.

Ram Lambs with above genetics plus late born from new sires from Batt Suffolks-Idaho. RR and QR \$400 choice. Ewe lambs also available.

KIMM 10099 RR/NN Sire is Bob Kimm's popular 7012 ram. Just sheared after wintering over on pasture and no supplements. His daughters for sale show same body smoothness, ease of care, and proven breeders as lambs. "Kimm99" will be a lead sire for us this year as well as a triplet son of his from our top producing ewe.

For More Information: Christina Waller 541-808-1234 waller.c@hotmail.com

Sires can be viewed at www.southernoregonsuffolks.us

FOR SALE: Reg Suffolk Sheep

Reg Suffolk sheep for sale - 15-20 brood ewes. Genetics include MacCauley, Erstrom, Heggemeier, Pasch, and Silver Dollar. Also, yearling ewes and many top quality ewe lambs. Top quality RR Yearling rams and ram lambs sired by "Cobra II."

For More Information: Alex Masser, A. Masser Suffolks, Elizabethville, PA phone: 570-847-1833

FOR SALE: Ewe Lambs, Ram Lambs

I have a few select ewe lambs, and ram lambs for sale. These are great stud ewe, and stud ram prospects. They show a lot of length, size, bone, style, promise, and are very complete and competitive lambs.

Ram Lamb 1301 - Heggemeier on the top side and Skartvedt (Touchdown Acres) on the bottom side (TW – DOB 1/26/13)

Ram Lamb 1307 - Stewart 1205 on the top side and Stewart 1225 on the bottom side (TW – DOB 3/17/13)

1307 is a very promising must see show prospect, and 1301 is not much different!

Ewe lambs for sale on the ground have the following breeding (Heggemeier X Skartvedt) (Belle Haven) and (Stewart) Breeding. Call for information or Pictures! Great looking prospects!

For More Information: Mark Weisberg, 515-832-9230

5 Yearling Ewes For Sale

I have 4 great looking, super correct yearling ewes with plenty of style, length, leg, and muscle. These ewes will produce great lambs. All of my ewes from that farm produce some great keepers and the only reason I am passing these on is so I have room for the lambs that I am keeping back. These are some true stud ewes and I know they will produce great lambs far better than they are and they are some great ewes with some great genetics packed in them.

1237 RR/NN, 1238 QR/NN, 1239 QR/NN, Quad sisters out of Corson 09-357 (Sire) and Miller 10-121 (Dam)

1229 RR/NN, 1230 RR/NN a Twin out of Ruby Mountain 1109 (Sire) and Stewart 1130 (Dam). \$650 each or \$3100

(Continued on page 24)

(Continued from page 23)

for all 5 - Loaded with Ruby Mountain & John Corson Bloodlines! I hate to let them go but they might as well go to a good farm with room for them!

Questions, Comments or to schedule a visit call any time. This is a must see great opportunity for any shepherd with any flock!

For More Information: Mark Weisberg 515-832-9230

MacCauley 2715 Stud Ram For Sale

Ram Lamb MacCauley 2715 packed with power, style, muscle, and bone!

Twin, born 9/2/2012; Sire is MacCauley 2479 packed with national champion blood lines and he falls all the way back to DTR's The Rock. This rams dam is MacCauley 2504. \$1,500 or \$1000 with 50% ownership and full possession.

This is a great ram and shows great potential. He is super correct with a true Suffolk style head, well muscled, with plenty of bone, style and structure, he will produce in the show ring slick shorn or fitted, and on the farm! This impressive ram will throw some great lambs, I will be using him next season to breed if he does not sell. I am just getting too many rams around and the ewes have a lot of the same blood in them so I figured I would pass him on so that he may help someone else's flock.

Questions, Comments or to schedule a visit call any time. This is a must see great ram opportunity for any shepherd with any flock!

For More Information: Mark Weisberg 515-832-9230

15 Month Old Ram For Sale

15 month old ram for sale that is a registered Suffolk (RRNN). Both parents registered Kimm stock, both bought in Iowa. He is a good looking ram. \$250.

For More Information: Ted Williams 615-347-1692

MIDWEST STUD RAM SALE SUFFOLK SOCIAL

Planning to attend the Suffolk Sale during the Midwest Stud Ram Sale? If so, please plan to attend the Suffolk Social on Friday, June 28th before the Suffolk Sale. The social will be located at the Suffolk booth.

Hope to see you there!



Hosted and Sponsored by the United Suffolk Sheep Association



NFP
naturalfiberproducers

We WANT your fiber . . .
We NEED you!!!

We are an agricultural cooperative focusing on natural fibers grown in the US and manufactured in the US. We produce 24 different products that need your fiber.

We need you as members because we cannot do this alone. We are not asking for all your fiber just 10% to be put towards changing the US Textile industry for the benefit of the farms and all the employees of US Textile.

We've been in business since May 2007. Please join us by visiting our website.

www.naturalfiberproducers.com

United Suffolk Sheep Association

PO Box 995
Ottumwa, IA 52501

Phone: 641.684.5291

Fax: 641.682.9449

E-mail: info@u-s-s-a.org



We're on the Web!

www.u-s-s-a.org

www.ujssa.oreg



Submitted by Mike O'Neill

Sheep Resources

The USSA Office often gets phone calls asking for resources producers can go to for sheep-related questions. The following are resources the office is aware of for producers to use. Since this may not be a complete list, if there are additional resources that you use and would like to share please email those to news@u-s-s-a.org.

New Sheep Producer Resource Website

Sheep Community of Practice is a new web-based tool available to sheep producers through the eXtension Foundation, a non-profit entity. This website offers a Ask the Expert Tool that will connect you with experts and allow you to ask questions. Through the Ask the Expert Tool, the producer can even attach images. The website also offers information about sheep feeding and nutrition, reproduction and breeding, management practices, genetic selection, health and veterinary care, grazing and pasture, and wool. To visit the Sheep Community of Practice website go to: <http://www.extension.org/sheep>

Ask a Sheep Vet

This website is a blog written by sheep veterinarian Dr. Kennedy of Pipestone Veterinary Clinic, Pipestone, MN. The blog contains answers to various sheep related questions, with new information added often. To visit Dr. Kennedy's blog please go to: <http://askavetsheep.wordpress.com/> Also, if you "LIKE" [Pipestone Vet Sheep-Goats](#) on Facebook, are several question and answers posted daily.

A Guide to All Things Sheep©

A Guide to All Things Sheep© is a new resource for sheep breeders and producers by Premier 1 that offers information on several topics from educational guides, how to's, photos, recipes, an events calendar, view points and industry spotlights. To visit A Guide to All Things Sheep© please visit: www.premier1supplies.com/sheep-guide/

Check out the USSA Facebook page!

