

# Suffolk Newsletter

## The United Suffolk Sheep Association

November 2013

Volume 2, Issue 8

### Notes from the USSA Office

As the leaves fall and brisk, frosty mornings welcome us most mornings we're reminded fall is here...isn't it hard to believe it's November!? In just a few short days the 2013 NAILE festivities will begin. Please find a detailed schedule of the events further in the newsletter. I hope that if you are planning to be at NAILE you can find a chance to attend some of our Suffolk Events. The USSA Board is especially excited to honor the inaugural class of the USSA Hall of Fame Inductees. A complete listing of these individuals can be found in the newsletter. Whether it's saying hello to Suffolk friends at the Suffolk Social, attending the junior board meeting to see what they are planning for next July or looking to purchase a needed addition for your flock at the Suffolk Sale, I hope to see you there! Also, I invite you to stop by the Suffolk Booth and say hello and check out the silent auction items—proceeds from the silent auction benefit the UJSSA's activities!

Have you sold a ram or bred ewe this fall? Don't forget to send registration certificate to be transferred! Also, if it is a bred ewe, please remember to fill out the breeding certificate located on the back of the ewe's registration paper.

Before you know it, the holidays will be here! If you are looking for a unique gift for a Suffolk Enthusiast, take a look at the Limited Edition Suffolk Sculpture! Please order by Dec. 10th to insure it's arrival in time for the holidays!

As always, please feel free to contact me if you need anything!

Happy Thanksgiving!



### Inside this issue:

USSA Director Election Results	2
UJSSA President's Message	3
Calendar of Events	3
Hall of Fame Inductees	4
Ambassador's Message	5
Suffolk Associations Close to Home	8
USDA Research Report	9
What is NSIP?	12
USSA Member News	15
Learning Opportunities	16
Futurity Standings	17
Classified Ads	18
2013 NAILE Events	19

**DON'T FORGET TO MAIL THE OFFICE YOUR \$5 ENTRY FEE FOR THE NAILE OPEN SHOW.**

Welcome!

...new members, returning past members (whom have not been active in recent years) and past UJSSA members who have joined the USSA during September & October 2013.



- ◆ Dustin Cruit, IL
- ◆ Misty Ridge Farm, WV
- ◆ Austin Goff, ID
- ◆ Larson Livestock, WA
- ◆ Jason Simpson, CO
- ◆ Junior Lenth, IA
- ◆ Thomas & Loretta Schwartz, IN

# USSA BOARD OF DIRECTORS

## Officers

### **President:**

**Rob Zelinsky** (Exp. 2014)  
Brookings, SD  
605-354-8248  
robzelinsky@yahoo.com

### **Vice President:**

**Bill MacCauley** (Exp. 2013)  
Atglen, PA  
Home: 610-593-2907  
Cell: 610-256-1608  
billmac@johnrock.com

### **Treasurer:**

**Rex Quam** (Exp. 2014)  
Dodge Center, MN  
Home: 507-374-2976  
Cell: 507-251-2650  
Rex.Quam@Riverland.edu

## District 1

**Donna Mays** (Exp. 2014)  
Howe, ID  
208-767-3405  
lostriverdm@yahoo.com

**Larry Pauly** (Exp. 2013)  
Delta, UT  
435-864-2777  
l\_pauly@msn.com

**Keith Pumphrey** (Exp. 2015)  
Walla Walla, WA  
509-529-0140  
jkpumphrey@hotmail.com

## District 2

**Virginia Gergen** (Exp. 2015)  
Lincoln, NE  
402-477-7333  
veegergen@yahoo.com

**Amanda Dobson** (Exp. 2013)  
Lexington, MO  
660-232-1433  
ab\_vettech@yahoo.com

## District 3

**Kim Ketcham** (Exp. 2013)  
Edwardsville, IL  
Home: 618-656-5388  
Cell: 618-581-3554,  
kimketcham@hotmail.com

**Paul Skartvedt** (Exp. 2015)  
Radcliffe, IA  
515-450-1302  
skarby67@yahoo.com

## District 4

**Diane Russell** (Exp. 2015)  
Eaton, IN  
765-288-4845  
farmer1224@hughes.net

**Lisa Webster** (Exp. 2014)  
Windham, ME  
Home: 207-892-2161  
northstarfarms@me.com

---

## 2013/2014 USSA DIRECTOR ELECTION RESULTS

### District 1

Larry Pauly, Delta, UT

### District 2

Amanda Dobson, Lexington, MO - 34 votes  
Jim Heggemeier, Platte City, MO - 10 votes

### District 3

Bill Royer, Washington, IL

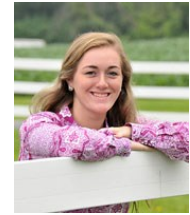
### District 4

Randy Hodges, North Branch, MI - 25 votes  
Bill MacCauley, Atglen, PA - 39 votes

**Congratulations to the newly elected USSA Directors:  
Larry, Amanda, Bill & Bill!**



# A Message From the UJSSA President...



Hello and happy Fall! From looking at social networks and The Banner I see many Jr. Suffolk members have had a terrific summer at County and State fairs and shows across the country, great job to all of you. Remember to share your love of Suffolks with someone else, get them involved as a member if they already have Suffolks, and encourage your friends, especially those with Suffolks to join us in July at the National Jr. Show. Help us keep our breed in the lead and our memberships in the USSA growing.

As the temperatures are slowing beginning to drop and the leaves are beginning to show their fall colors. I am reminded that NAILE is just around the corner. Remember juniors to get your entries in and join us as we wind down the show season with our always fun Junior Suffolk show at NAILE. Don't forget there is a pizza party for junior members on Saturday at noon. Also we will be having the annual silent auction table to raise money to support the Junior Association. The money we raise goes to buying shirts for NAILE and the National Junior show, winner prizes, premiums, facility rental, awards banquet, etc., so the more money you help us raise the more money we may have to spend on prizes and premiums. Remember the auction items do not necessarily need to be sheep related, anyone can donate to the silent auction and if your donation is a basket of things then please wrap it in plastic so that we can keep everything in the basket intact.

Hope everyone's fall lambing season is going well. I can't wait to see everyone in Kentucky!!

Connor Vincent

---

## Calendar of Events

**Have a Suffolk related event you would like to add to the calendar of events?** Email your event to: [news@u-s-s-a.org](mailto:news@u-s-s-a.org). Event flyers, show rules and entry forms can be found on the USSA website event page. The newsletter may not contain all upcoming events. To find a full listing, please visit : [www.u-s-s-a.org](http://www.u-s-s-a.org) or [www.ujssa.org](http://www.ujssa.org).

### November

- 16 NAILE Jr. Market Lamb Show\*, Louisville, KY
- 16 UJSSA Board Meeting, 6pm, NAILE, Louisville, KY
- 17 NAILE Jr. Breeding Sheep Show\*, Louisville, KY
- 18 USSA Board Meetings, NAILE, Louisville, KY
- 19 USSA Annual Meeting & Dinner, 6:30pm NAILE, Louisville, KY
- 20 NAILE Open Suffolk Show\*, Louisville, KY

\*All NAILE Shows and event information can be found by visiting: [www.livestockexpo.org](http://www.livestockexpo.org).

\*\*\*SEE PAGE 17 OF THE NEWSLETTER TO FIND A MORE DETAILED LISTING OF NAILE EVENTS \*\*\*

- 30 Illini Bred Ewe & Ewe Lamb Sale - Bloomington, IL—Breeding Stock, Wether Sires & Dams

### January

- 22-25 American Sheep Industry Association Convention, Charleston, SC. [www.sheepusa.org](http://www.sheepusa.org)



# *United Suffolk Sheep Association Hall of Fame*

## *2013 Inductees—Inaugural Class*

With great excitement, the USSA Board of Directors announces the following group of individuals as the inaugural class of the USSA Hall of Fame! Congratulations, these individuals contributions to the Suffolk breed and association are to be commended!

**Bob & Marge Paasch & Family, Donner Trail Ranch**

**Fred A. & Marian Coble**

**Farrell Wankier**

**Warren Kuhl**

**Jarvis Sheep Co.**

**Jack Larsen**

**Olsen Brothers, Alden & Snell**

**Harlan & Edwina Wagner**

**Allan & Veneal Jenkins & Annette Benson**

**Larry Mead**

**Betty Biellier & Family**

**Roy & Joe Warrick**

**Richard Roe**

**Heggemeier Sheep Farms, Bill & Alice Heggemeier and Jim & Jody Heggemeier**

**Craig Van Arkel, Van Arkel Suffolks**

**Roland (Rollie) and Ruth Rosenboom**

**Robert Hall**

**Wes Azeltine**

**DuWayne Swenson**

**Roger Nichols**

**Wayne & Mary Skartvedt**



**George and Fred Buckham**

**Bud & Julia Westlake & Family**

**Bill & Helen Hurst**

**Dr. Harold A. Henneman**

**Pearson Linn**



This group of inductees will be honored on Tuesday, November 19th during the USSA Annual Meeting and Dinner. Please check the USSA website as information about each inductee and photos will be posted.



## A note from your USSA Ambassador, Taylor Peck

### Got Suffolks?

Here's an idea. As Suffolk breeders, we are constantly searching for new ways to market our product and promote our breed. I am wondering, when was the last time you reached out to junior agriculture groups right in your own backyard? I am writing this letter, hoping that maybe you could use it to spread the word to 4-H and FFA leaders and anyone else where the potential to pick a breed of sheep exists. I am writing this to our local 4-H County Agent; I am hoping that there is an idea here that you can use to encourage someone to select Suffolks and hopefully become a lifelong supporter. You'll need to change the names and maybe some text to suit your specific marketing goals.

Dear Mrs. Peterson,

At our farm in Pittstown, we breed, raise and sell Suffolk sheep. We want to get the word out to any current or future 4-H junior that if they are looking for an inexpensive, interesting, and productive livestock project, they should consider Suffolk sheep.

Suffolks are a fast growing, heavily muscled, easy to care for breed that makes a fantastic market lamb. Not only are Suffolks one of the oldest and most popular breeds in the country, they are also very versatile for those who wish to show them. They can be shown fitted (with their wool carded and groomed) or simply slick shorn. You can also raise terminal market animals which are easy to care for, show, and sell.

When we sell a lamb to a 4-H member, we also stand behind the product with advice and remain available to help them be successful in growing and marketing the lamb. We can also help them determine which type of Suffolk would best fit their needs. Hopefully, they will see very quickly why Suffolks are the breed in the lead!

We have lambs available beginning in April, and yearlings and rams usually available throughout the year.

Thank you for passing this on to our county 4-H livestock leaders.

Sincerely yours,

Taylor Peck



## SUFFOLK NEWSLETTER ADVERTISING RATES

1 page—\$200/month

1/2 page—\$100/month

1/4 page- \$50/month

Ads should be emailed to: [news@u-s-s-a.org](mailto:news@u-s-s-a.org). Please include the ad size and which months the ad should be run. Ads must be "publish-ready". Submit ads by the 25th of the month to ensure they will be included in the next newsletter.

# Notes for UJSSA Members

**Attention Suffolk Breeders!** Would you be willing to help the UJSSA plan and coordinate the 2014 National Junior Suffolk Show to be held in Hutchinson, Kansas? The UJSSA is looking for volunteers to help with this year's events. If interested, contact UJSSA President, Connor Vincent.

**2014 National Junior Suffolk Sheep Show Sponsorship** Would you like to help sponsor the 2014 National Junior Suffolk Show? If you are interested in sponsoring a specific class or would like to just be a general sponsor please contact Connor Vincent, Amanda Dobson, Rebecca Krinsky or the USSA Office!

**UJSSA Silent Auction** The UJSSA will be having a Silent Auction throughout the events at NAILE. If you are interested in supporting the UJSSA and would like to donate an item/gift basket for the UJSSA Silent Auction, please contact UJSSA President, Connor Vincent.

**UJSSA Meeting** There will be a UJSSA Meeting on Saturday, November 16th at 6pm during NAILE in Louisville, Kentucky. Meeting location will be posted at the USSA Booth at NAILE. Please feel free to join in on the meeting!



2013 NATIONAL JUNIOR SUFFOLK SHOW

Now posted on the [UJSSA Website](#):

[Complete Results](#) • [Photos](#) • [2014 UJSSA Directors](#)

**CHECK OUT THE  
SHOW RESULTS  
ON THE UJSSA  
SITE!**

## UJSSA Board of Directors

[www.ujssa.org](http://www.ujssa.org)



The UJSSA is on facebook!

### Officers

**President:** Connor Vincent, Laurel, DE  
302-858-2841,  
connor.vincent33@gmail.com

**Vice President:** Tayler Wolff, Oakes, ND  
701-783-4514, wolff.tayler@gmail.com

**Secretary:** Jaclynn Knutson, Centerville, SD  
605-670-2147, JK3368@k12.sd.us

**Treasurer:** Chris MacCauley, Atglen, PA  
484-319-8376, cmac.sheep@yahoo.com

### Ambassador

**Taylor Peck**, Pittstown, NJ  
908-328-4053, peck676@yahoo.com

### Directors

**Codee Gilbertson**, Sherwood, ND  
701-833-6754, 22and5@gmail.com

**Elizabeth Niedziela**, Hadley, MA  
413-585-9158, niedzielae@gmail.com

**Andrew Slack**, Lake Geneva, WI  
262-903-1326, Kslack-  
suffolks@yahoo.com

### Junior Coordinators

**Amanda Dobson**, Lexington, MO  
660-232-1433, ab\_vettech@yahoo.com

**Rebecca Krinsky**, Washington, OK  
405-501-1593,  
krinskyhamps@gmail.com

### Interns

**Alison Knutson**, Centerville, SD  
605-660-9881, ajknutson@iw.net

**Jackie Oelke**, Barrett, MN  
218-731-7748, jsoelke@gmail.com

**Lily Skartvedt**, Radcliffe, IA  
515-290-2470,  
lily.skartvedt@yahoo.com

**Raelynn Thompson**, Patoka, IN  
812-779-6059, raelynn023@gmail.com

**Riggen Zelinsky**, Brookings, SD  
605-695-7791,  
christy.zelinsky@yahoo.com

# Suffolk Breed Standards

**Introduction:** Suffolk sheep are efficient converters of forage and feed to body dimension and mass. All Suffolk sheep should be structurally and reproductively sound. They should have distinctly black heads, ears, and legs, and produce a white fleece. Rams should appear masculine, muscular, of good size and well proportioned. Ewes should exhibit strong maternal traits, carry and deliver lambs with ease, and have ample milking ability.

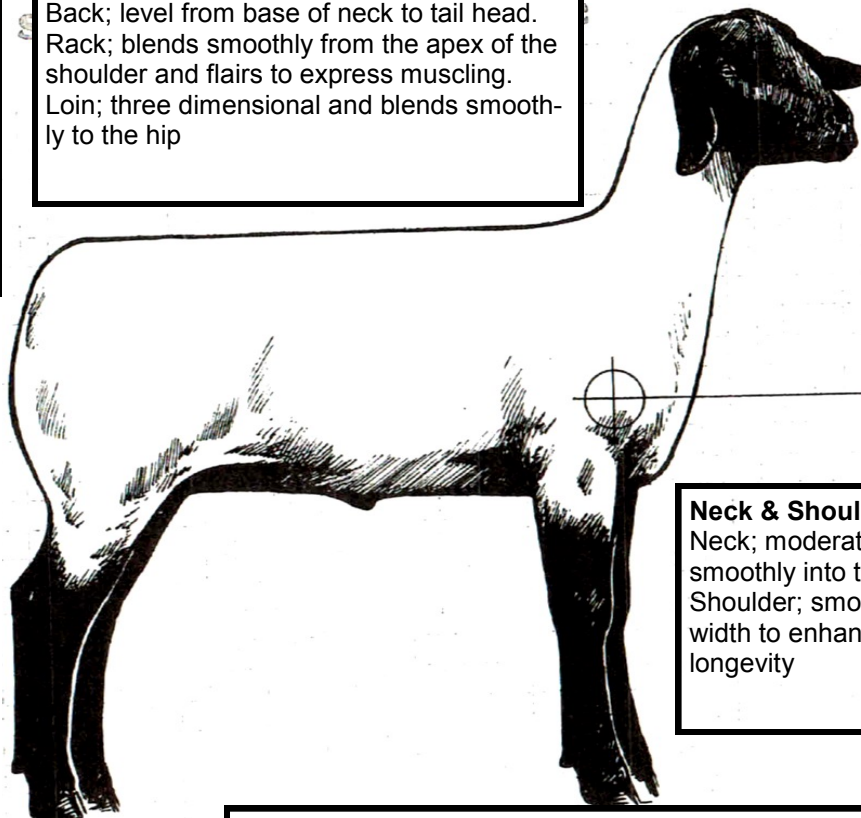
**General Body Shape and Capacity: ..... 20 points**  
 Chest; wide and deep, with these dimensions carrying back into the lower rib  
 Side Profile; depth of body that carries through middle rib and rear flank  
 Muscularity; roundness of shape in muscle patterns throughout the body

**Rump and Twist: ..... 20 points**  
 Rump; long and wide, level from hooks to pins, with width at tail head carrying down through a wide stifle, Twist; should be full, broad and deep

**Back, Rack, & Loin: ..... 20 points**  
 Back; level from base of neck to tail head.  
 Rack; blends smoothly from the apex of the shoulder and flairs to express muscling.  
 Loin; three dimensional and blends smoothly to the hip

**Head, Mouth, & Ears:.....15 points**  
 Head; black from poll forward with wide skull, long muzzle, and deep jaw  
 Mouth; sound, with incisor teeth meeting the pad  
 Ears; long, black, bell-shaped, pointing down

**Legs, Feet, & Gait: .....20 points**  
 Legs; black with smooth heavy bones, front and rear legs set wide enough to exhibit body width  
 Feet; short pasterns with toes pointing straight forward.  
 Gait; long and smooth strides, tracking as wide in rear as in front



**Neck & Shoulders:..... 5 points**  
 Neck; moderate length, set smoothly into the shoulders  
 Shoulder; smooth with adequate width to enhance functionality and longevity

**Disqualifications:**  
 \*over-shot or under-shot jaw  
 \*Hermaphrodite (animals having both male and female organs)  
 \*Inguinal hernia  
 \*(rams) very small testicles or single testicle

**Discriminate Against:**  
 \*post or straight legged, or sickle hocked, or crooked, bowed, or bent legs  
 \*flat or weak pasterns  
 \*unsound movement or gait  
 \*excessive black fiber in woolled areas  
 \*white speckling or splotching on bellies, inner legs, neck or jaw  
 \*asymmetrical or split testes  
 \*inadequate scrotal circumference (yearling ram < 35 cm.)  
 \*pendulous udders, low capacity udders, balloon teats  
 \*upturned vulva  
 \*wild or uncontrollable dispositions  
 \*Inverted eyelids  
 \*prolapsed uterus or rectum  
 \*horns  
 \*extreme width at shoulder





# Evaluation of Columbia, USMARC-Composite, Suffolk, and Texel rams as terminal sires in an extensive rangeland production system.

## Part 1: Ewe productivity and lamb survival, growth, and feed efficiency

David Notter<sup>1</sup>, Greg Lewis<sup>2</sup>, Michelle Mousel<sup>2</sup>, Tim Leeds<sup>2</sup>, Henry Zerby<sup>3</sup>, Steve Moeller<sup>3</sup>, David Kirschten<sup>2</sup>, and Bret Taylor<sup>2</sup>

<sup>1</sup>Department of Animal and Poultry Science, Virginia Tech, Blacksburg; <sup>2</sup>USDA, ARS, U.S. Sheep Experiment Station, Dubois, ID; and <sup>3</sup>Department of Animal Science, The Ohio State University, Columbus

### Introduction

Mating systems involving crossing of terminal sire sheep breeds with superiority for production characteristics such as growth rate and feed efficiency with well-adapted maternal breeds provide opportunity to increase lamb carcass value while maintaining acceptable environmental adaptation in the crossbred lambs. Large, lean terminal-sire breeds such as the Suffolk and Columbia have been most typically used in extensive rangeland conditions found in much of the western U.S.A. Intense selection in these breeds for adult body weight and frame size led to correlated increases in growth rate but also concerns regarding fitness and survival rates to weaning in resulting crossbred lambs, and other less-extreme terminal-sire types of most moderate size have been increasingly promoted as alternatives.

An experiment was therefore carried out at the US Sheep Experiment Station (USSES), Dubois, ID to compare Columbia, USMARC Composite, Suffolk, and Texel sires in matings with Rambouillet ewes in an extensive rangeland production system. USMARC Composite rams were developed at the U.S. Meat Animal Research Center (USMARC), Clay Center, NE, in the early 1970s from crosses among Columbia (50%), Suffolk (25%), Hampshire (25%). The study included intensive characterization of ewe productivity and lamb survival, growth, composition, and feed efficiency. Matings to produce experimental animals were made in 2005, 2006, and 2007.

### Experimental Procedures

Columbia, Suffolk, and Texel rams (n = 22, 22, and 21, respectively) were sampled from industry and USSES flocks, and Composite rams (n = 22) were obtained from USMARC. Approximately one half of Suffolk rams and one quarter of Columbia rams were obtained from flocks participating in the U.S. National Sheep Improvement Program and were selected for high estimated breeding values (EBV) for 120-day postweaning weight. Most rams were purchased as yearlings and transferred to USSES in the summer preceding their first use in breeding. A few older rams were used in 2006 and 2007 to provide genetic connections between years.

Ewes were selected from the USSES Rambouillet flock and were 3 to 7 years old at lambing. In each year, rams and ewes were joined in single-sire pens for 21 days beginning in mid-October. Ewes lambled in March and early April in outdoor lots under frequent surveillance. Ewes and lambs were placed in small pens for 24 to 48 hours and then comingled in outdoor lots. Male lambs were castrated at birth. Ewes and lambs were moved to sagebrush steppe in late April and herded on subalpine range beginning in early July. Lambs were weaned in early August at approximately 132 days of age. In each year, lambs were assigned, within sex and sire breed, to one of three replicated drylot pens and fed a series of diets over 6 weeks to facilitate transition from a preweaning forage diet to a high-energy (85% digestible) finishing diet. Feed was provided for free-choice intake in a single feeder in each pen to allow monitoring of feed intake, with a maximum of 16 lambs per pen. Lambs were scanned every 2 wk using ultrasound during the postweaning period to monitor changes in fat depth and loin muscle area.

### Results and Discussion

Over 3 years, rams of the four terminal sire breeds were used in 1,018 matings with Rambouillet ewes. These matings resulting in 908 lambings and produced 1,834 lambs. Weaning weights were recorded for 1,306 lambs, and 1,049 of these lambs were evaluated for postweaning performance.

#### Ewe reproduction and lamb survival

The fertility of adult Rambouillet ewes in this project averaged 95%. The average number of lambs born per ewe lambing was 2.02. Numbers of lambs weaned per ewe exposed or per ewe lambing are shown in Figure 1. Production levels were broadly typical of commercial flocks in the region, with overall averages of 1.45 lambs weaned per ewe lambing and 1.38 lambs weaned per ewe exposed. No significant sire breed differences were observed for the percentage of ewes that lambled or for numbers of lambs born or weaned per ewe exposed or per ewe lambing.

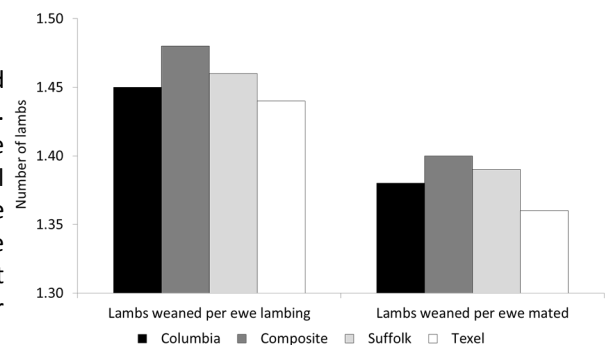
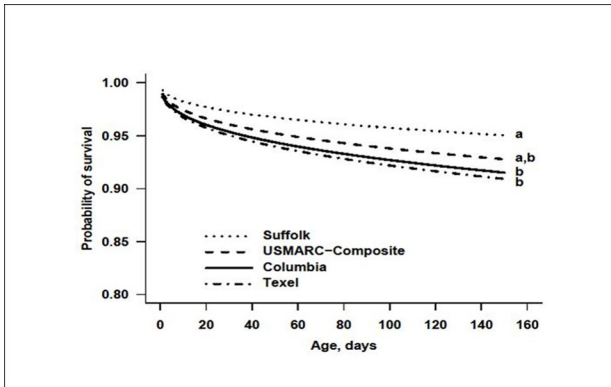


Figure 1. Numbers of lambs weaned per ewe mated for Rambouillet ewes mated to Columbia, Composite, Suffolk, and Texel rams.



(Continued from page 9)

Figure 2. Survival functions from birth to weaning for lambs sired by Columbia, Composite, Suffolk, and Texel rams. Sire breeds that do not share a common letter differed ( $P < 0.05$ ) for survival rate.

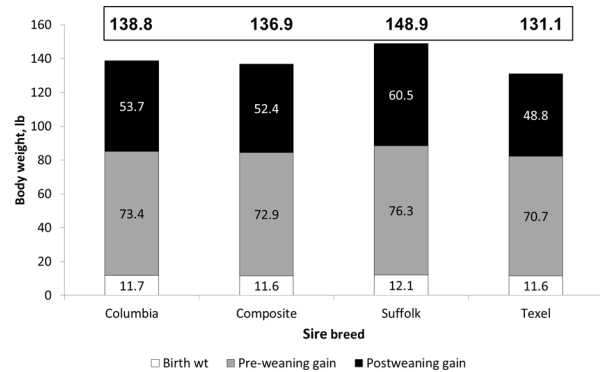


Figure 3. Body weights at birth, weaning, and 90 days postweaning for lambs sired by Columbia, Composite, Suffolk, and Texel rams. Values within shaded columns are birth weights and gains during the pre- and postweaning periods

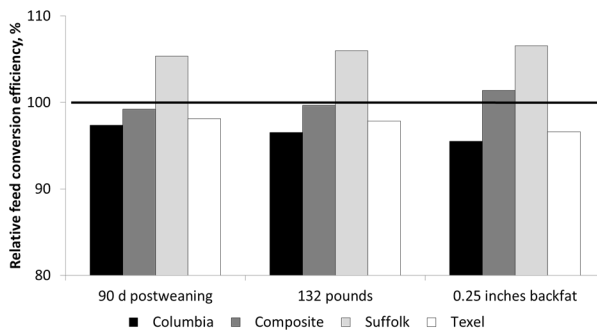


Figure 4. Relative values for feed conversion efficiency (FCE) for lambs sired by Columbia, Composite, Suffolk, and Texel rams at 90 days postweaning, 132 pounds live weight, or 0.25 inches of backfat. FCE was measured as the ratio of gain achieved to ME consumed and expressed as a percentage of the average of all sire breeds. **Higher values indicate more efficient growth.**

endpoints. This result largely reflected their more rapid postweaning gain and greater leanness. Differences in efficiency of feed conversion among remaining sire breeds were small at 90 days on test. However, Columbia- and Texel-sired lambs tended to be less efficient than Composite-sired lambs at both 132 lb and 0.25 inches of ultrasonic backfat. This result can be explained by the slower growth and greater fatness of Texel-sired lambs. However, Columbia-sired lambs were also relatively inefficient despite their large adult body size, relatively rapid gains, and tendency to stay lean.

Reasons for observed differences in feed conversion efficiency among sire breeds were investigated in greater detail by calculating residual feed intake (RFI) for each breed group during the feeding period. The RFI is derived as the difference between the observed feed intake and that predicted from the average body weights (i.e., average maintenance re-

Shed-lambing management protocols were designed to minimize death losses in the first 24 to 48 hours following lambing. However, ewes were subsequently managed under extensive conditions on desert or mountain range with minimal shepherding until weaning. The adult Rambouillet ewes used in this study were moderately prolific, with approximately 17% triplet births. Essentially all triplet litters had one lamb orphaned or fostered and a few twin litters were also reduced to a single lamb in cases where the milk supply of the ewe appeared insufficient to raise twins. Approximately 6% of the lambs were born dead and approximately 14% of the lambs were orphaned or fostered to other ewes. The proportions of lambs that were orphaned or fostered did not differ among sire breeds. After excluding orphaned and fostered lambs from the analysis, survival probabilities from birth to weaning for lambs produced by the different sire breeds are shown in Figure 2. Survival rates to weaning (including lambs that were dead at birth) were 92.5% for Suffolk-sired lambs, and were significantly superior to survival rates recorded for Texel-sired lambs (86.4%) and Columbia-sired lambs (87.3%).

Our results, therefore, contradict previous studies that reported lower survival rates for Suffolk-sired crossbred lambs compared to lambs sired by Texel or Composite rams. Those studies used prolific Romanov-crossbred ewes and included ewes lambing at 1 and 2 years of age, and ewes were not monitored during the night. By contrast, our ewes were 3 to 7 years old and were closely monitored at lambing. Rambouillet ewes are also known to have relatively long gestations; the average birth weight for lambs in this study was nearly 12 lb (Figure 3).

### Lamb growth

Growth rates before and after weaning clearly favored Suffolk-sired lambs (Figure 3). Lambs sired by smaller-framed Texel rams were lightest at weaning and after 90 days in the feedlot. Columbia- and Composite-sired lambs were similar in weaning weight, but lambs sired by the larger-framed Columbia rams grew more rapidly after weaning compared to Composite-sire lambs. Suffolk-sired lambs were thus 3 to 5 lb heavier at weaning and 10 to 18 lb heavier at 90 days after weaning than lambs sired by rams of the other breeds.

### Feed Efficiency

Efficiency of feed conversion was assessed as the ratio of pounds of gain achieved relative to Mcal (calories x 1,000) of metabolizable energy consumed (Figure 4). Results are expressed as a percentage of the overall mean, and higher values indicate more efficient growth. Suffolk-sired lambs grew most efficiently to all harvest

(Continued on page 11)

quirements) and daily gains of the lambs. Lambs that gain rapidly relative to body weight normally have greater feed conversion efficiency, although poor efficiency of Columbia-sired lambs in this study demonstrated that is not always the case. Adjustment of observed feed intake for body weight and average daily gain provides an indication of inherent differences in efficiency resulting from possible breed differences in things such as maintenance requirements at comparable body weights, energy lost due to differences in voluntary activity, lower energy density (i.e., less fat) in the gain, and greater efficiency in digestion and metabolism of nutrients. Negative values for RFI are desirable, indicating that less feed was required to maintain comparable body weights and achieve comparable rates of gain.

Changes in RFI across the feeding period are shown for each sire breed in Figure 5, and means for RFI for each sire breed at alternative harvest endpoints are shown in Figure 6. Columbia-sired lambs consistently required more feed to maintain body weight and achieve a fixed level of gain. Differences among remaining breeds were small but tended to favor Texel-sired lambs. Our results suggest relatively poor efficiency of feed use in Columbia-sired lambs, but remaining breed differences appear to mainly reflect difference in growth rates relative to body size and maintenance requirements.

### Conclusions

Suffolk rams were superior to rams of other breeds as sires of crossbred market lambs in this extensive rangeland production system. As expected, Suffolk-sired lambs grew more rapidly before and after weaning and were superior in efficiency of feed conversion. Suffolk sires were also equal or superior to rams of other breeds in ewe fertility and prolificacy and lamb survival.

Composite-sired lambs were equal or superior to the remaining breeds for most measured traits, but grew more slowly and less efficiently than Suffolk-sired lambs. Composite sires have been recommended for use in relatively stressful production conditions such as pasture lambing, summer mating, lambing of yearling ewes, and use of prolific ewes, but were not superior to Suffolk sires in lamb survival or ewe productivity under our conditions.

Texel-sired lambs grew more slowly than lambs sired by the other breeds, but generally had favorable residual feed intake values. This result suggests opportunity to develop new composite lines that can capitalize on favorable effects of the Suffolk on growth rate and possible favorable effects of the Texel on feed efficiency.

These results suggest that more intense selection for growth rate and efficiency of feed conversion are required in order for the Columbia to compete directly with the Suffolk as a terminal sire. Columbia breeders thus need to consider the relative merits of the breed's existing dual-purpose role in extensive rangeland sheep production compared to opportunities to develop more specialized maternal or terminal-sire lines.

### References

Kirschten, D. P., D. R. Notter, T. D. Leeds, M. R. Mousel, J. B. Taylor, and G. S. Lewis. 2011. Correlations between measures of feed efficiency and feedlot return for F<sub>1</sub> lambs. *Proc. Western Section, Amer. Soc. Anim. Sci.* 62:86-88.

Kirschten, D. P., D. R. Notter, T. D. Leeds, M. R. Mousel, J. B. Taylor, and G. S. Lewis. 2013. Evaluation of Columbia, USMARC-Composite, Suffolk, and Texel rams as terminal sires in an extensive rangeland production system: V. Postweaning growth, feed intake, and feed efficiency. *J. Anim. Sci.* 91:2021-2033.

Leeds, T. D., D. R. Notter, K. A. Leymaster, M. R. Mousel, and G. S. Lewis. 2012. Evaluation of Columbia, USMARC-Composite, Suffolk, and Texel rams as terminal sires in an extensive rangeland production system: I. Ewe productivity and crossbred lamb survival and preweaning growth. *J. Anim. Sci.* 90:2931-2940.

Notter, D. R., M. R. Mousel, T. D. Leeds, J. B. Taylor, D. P. Kirschten, and G. S. Lewis. 2012. Evaluation of Columbia, USMARC-Composite, Suffolk, and Texel rams as terminal sires in an extensive rangeland production system: II. Postweaning growth and ultrasonic measures of composition. *J. Anim. Sci.* 90:2941-2952.

“Mention of trade names or commercial products in this publication is solely for the purpose of providing specific information and does not imply recommendation or endorsement by the U.S. Department of Agriculture (USDA). The USDA is an equal opportunity provider and employer.”

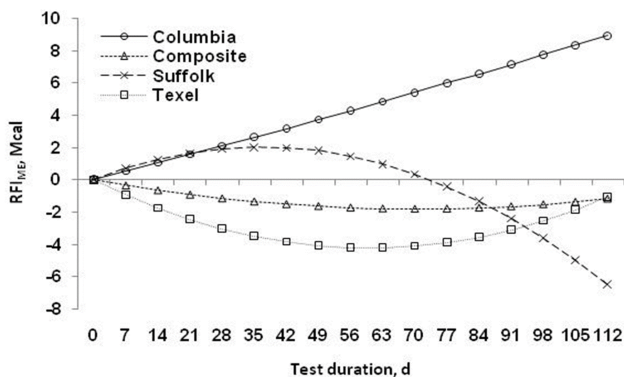


Figure 5. Cumulative residual feed intake (Mcal ME) across days on study by lamb sire breed. **Negative values are desirable**, and indicate that less feed was required relative to that expected for the observed body weights and average daily gains

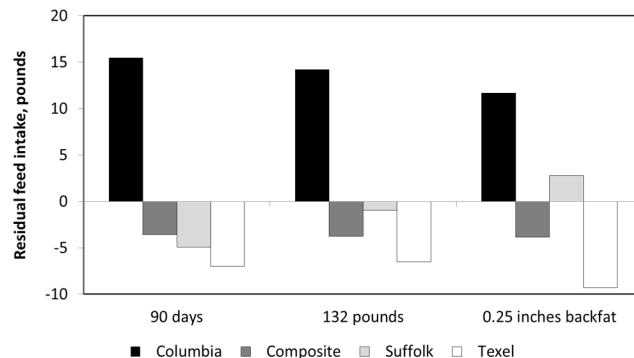


Figure 6. Residual feed intake for lambs sired by Columbia, Composite, Suffolk, and Texel rams at 90 days postweaning, 132 pounds live weight, or 0.25 inches of backfat. **Low values are superior**, and indicate that less feed was required relative to that expected for the observed body weights and average daily gains

# What is the National Sheep Improvement Program (NSIP)?

NSIP's business is calculating EBVs for sheep producers and breed associations and helping producers use those EBVs to their best advantage. EBVs are statistically created based on generations of progeny performance for various traits. EBVs are one of the most accurate tools to select for or against genetically superior or inferior sheep based on traits of interest. The following are traits measured in the Suffolk breed:

## EBVs for Weight Traits

### Birth Weight (BWT) EBV (kg)

- estimates direct genetic effects on weight at birth.
- Changing birth weights is generally not a primary selection goal.
- Positive selection may be advantageous in prolific breeds and in flocks where lambing difficulty is not a problem.
- negative selection may be desirable in less-prolific breeds or flocks with a history of heavy birth weights and associated lambing difficulties.
- birth weight EBV is positively correlated with weaning and post weaning body weight EBVs.

### Weaning Weight (WWT) EBV (kg)

- provides an estimate of preweaning growth potential.
- will likely receive positive selection emphasis in most flocks.

### Maternal Weaning Weight (MWWT) EBV (kg)

- estimates genetic merit for mothering ability.
- EBV mainly reflects genetic differences in ewe milk production, but other aspects of maternal behavior may also be involved.
- Selection for high maternal milk EBVs is expected to improve milk production and mothering ability .

### Post Weaning Weight (PWWT) EBV (kg)

- combines information on preweaning and post weaning growth to predict genetic merit for post weaning weight at 120 days.
- Positive selection on Post weaning Weight EBV is expected to favor rapid growth to typical market ages.

## EBVs for Carcass merit

### Fat Depth (CF) EBV (mm)

- indicator of genetic differences in carcass fatness between the 12th and 13th ribs.
- derived from ultrasonic measurements of fat depth in live animals and adjusted to standard post weaning weight of 110 lb (55 kg)
- Animals with negative Fat Depth EBVs are expected to produce leaner progeny with lower, more desirable Yield Grades and are generally desirable.
- emphasis placed on Fat Depth EBVs in individual breeding programs will depend on specifications, discounts, and premiums in current markets.

### Loin Muscle Depth (EMD) EBV (mm)

- indicator of genetic differences in muscling.
- derived from ultrasonic measurements of loin muscle depth between the 12th and 13th ribs in live animals and adjusted to standard post weaning weight of 110 lb (55 kg)
- Animals with positive Loin Muscle Depth EBVs are expected to produce offspring with larger loin eyes and are generally desirable.
- emphasis placed on Loin Muscle Depth EBVs in individual breeding programs depends on specifications, discounts, and premiums in current markets.

(Continued on page 13)

## EBVs for Reproduction

### Number of Lambs Born (NLB) EBV (% Lambcrop)

- evaluates genetic potential for prolificacy This EPD is expressed as numbers of lambs born per 100 ewes lambing.
- Selection on Number of Lambs Born EBV is expected to increase prolificacy in the flock.

### Number of Lambs Weaned (NLW) EBV (%)

- evaluates combined ewe effects on prolificacy and lamb survival to weaning. The NLW EBV is expressed as numbers of lambs weaned per 100 ewes lambing.
- Selection on Number of Lambs Weaned EBV is expected to increase weaning rates in the flock.

## Selection Index

**Carcass Plus Index** – allows a selection index for traits considered important in terminal sires (Post weaning growth, Post weaning fat, & Post weaning eye muscle depth)

$$\text{Carcass Plus EBV} = 5.06 \times \text{PWWT EBV} - 13.36 \times \text{Fat Depth EBV} + 7.83 \times \text{Muscle Depth EBV}$$

The true power of NSIP EBVs is the ability to compare animal's genetic potential for performance in various traits across contemporary groups. This allows comparison of animals raised in different flocks, different management conditions, and across lambcrops. The ability to do this allows us to compare genetic potential of individual animals.

The following web page provides percentile ranking within the Suffolk breed of individuals with EBV values for various traits: <http://www.nsip.org/wp-content/uploads/2013/09/Suffolk-Percentile-July-2013.pdf>

Suffolk Trait leaders and the sire summary can be found at: [http://www.nsip.org/?page\\_id=2444](http://www.nsip.org/?page_id=2444)

The NSIP enrollment form is available at: <http://www.nsip.org/wp-content/uploads/2013/06/Enrollment-form-2013.pdf>

You can direct any questions to NSIP Suffolk breed director: Alan Culham, [culhamab@aol.com](mailto:culhamab@aol.com), 517/896-7378

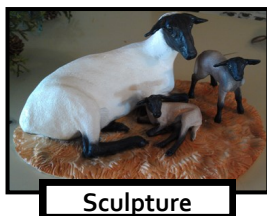
## ITEMS FOR SALE

To purchase, contact the USSA Office

Plastic Sheet Protectors .....	\$0.20
USSA Window Clings.....	\$1.00
USSA Flock Memo Book.....	\$1.00
USSA Folders.....	\$2.95
USSA 3-ring Binders.....	\$9.50
Suffolks Today & Tomorrow Print.....	\$80.00
Limited Edition Suffolk Sculptures.....	\$195.00



Binder



Sculpture



Print



Window Cling



Folder



\* PRESS RELEASE \* PRESS RELEASE \*

Oct. 4, 2013

## Nov. 15 Deadline for Annual American Sheep Industry Association Awards

For more information: Judy Malone  [\(303\) 771-3500, ext. 35](tel:3037713500) or Amy Trinidad  [\(303\) 771-3500, ext. 55](tel:3037713500)

DENVER, Colo. - Nov. 15 marks the deadline for the submission of nominations for the annual American Sheep Industry Association awards.

There are three award categories available for nomination:

The McClure Silver Ram Award is dedicated to volunteer commitment and service and is presented to a sheep producer who has made substantial contributions to the sheep industry and its organizations in his/her state, region or nation. The award may recognize a lifetime of achievement or may recognize a noteworthy, shorter-term commitment and service to the industry. Nominees should be recognized as industry leaders with nominations spelling out the candidates' contributions to the industry and its producers. Producers should be actively involved in sheep production and may or may not produce sheep as their sole income. However, their nominations should not be based in any part on a paid position serving the sheep industry.

The Camptender Award recognizes industry contributions from a professional in a position or field related to sheep production. Nominees should show a strong commitment and a significant contribution to the sheep industry, its organizations and its producers above and beyond what is called for in his/her professional capacity. Nominees should be well respected in their fields by their peers and by sheep producers. Nominees may be involved with the industry as teachers, consultants, scientists, youth leaders, promoters, event managers, journalists or any other position directly related to the sheep industry, enabling the nominee to affect the sheep industry in a positive and long-lasting way. Nominees may be recognized for lifetime service to the sheep industry or may be recognized for a shorter-term commitment that resulted in significant benefits for the sheep industry.

The Shepherd's Voice Award for Media recognizes outstanding year-long coverage of the sheep industry in either print or broadcast. The award excludes all publications and affiliates related solely to the sheep industry, allowing for recognition of outlets with general coverage for excellence in covering sheep industry issues. Nominations may be publications, networks or specific reporters exhibiting a strong commitment to balanced reporting and consistent coverage of the sheep industry locally, statewide and/or nationally.

Nominations must be postmarked by Nov. 15. (Please note that past award recipients are not eligible.) Awards will be presented at the ASI Convention, Jan. 22-25, 2014, in Charleston, S.C.

To receive a nomination application, call or email ASI:  [\(303\) 771-3500](tel:3037713500); [info@sheepusa.org](mailto:info@sheepusa.org). The one-page nomination form can also be downloaded from ASI's website, [www.sheepusa.org](http://www.sheepusa.org), by clicking on the "2014 Awards Program" link located on the home page.

ASI is a national trade organization supported by 46 state sheep associations, benefiting the interests of more than 80,000 sheep producers.

# USSA MEMBER NEWS

## *Our Condolences to the following Suffolk Families:*

**Thomas P. Brown**, age 68, of Troy, Ohio, passed away on Sunday, October 20, 2013 at the Upper Valley Medical Center. He was born on July 24, 1945 to the late Howard Hales and Mildred McGalliard Brown. Tom was preceded in death by his brother, Robert Hales Brown, sister, Rosemary Trissell, nephew, Jeffrey Anderson and his beloved, faithful Border Collie, Kate. He is survived by one sister, Josephine Brown Wallace of Casstown; nieces, Jill Kiser of Piqua, Krista Wallace Black of Richmond, Indiana, Jan Anderson, and Jayne Anderson and Ann Francis of Piqua; nephews, Ric Wallace of Casstown and Greg Anderson of Bowling Green, Kentucky; and many great-nieces and nephews.

Tom will be missed and remembered by his family and close friends, Craig Fetters of Osceola, Iowa, Janet Pond and daughters Stacey and Jennifer of St. Paris, John Allread, also of St. Paris, Dennis and Cheryl Clark of Troy, Cindy Gibson of Troy, and many sheep breeders across the country.

Tom was a graduate of Miami East High School and Bowling Green State University with a Bachelors of Science in Education. He taught for 30 years in the Miami East school system.

Tom lived on his family's historic Spring Haven Farm in Miami County for his entire life, raising Suffolk sheep and cattle there for 60 years.

Among numerous accomplishments, Tom was a reputed livestock judge. As a judge, Tom traveled to 42 states and judged at every national sheep show in the nation. In 1982, Tom was honored by the American Saddle and Sirloin Club as one of the top five livestock judges in America. He was the recipient of the Ohio Master Shepherd Award in 1991 and was inducted into the Ohio State Fair Hall of Fame in 2004.

Tom was a past-president of the Ohio Sheepman's Association, a member of the Ohio Lamb Board, the Lamb and Wool Checkoff Board and was currently chairman of the Ohio Scrapie Committee. He was a member of the Cove Spring Church. Graveside services will be held Thursday, October 24, 2013, 11:00AM at the Village of Casstown Cemetery where Tom will be buried on the family plot.

In lieu of flowers, memorial contributions may be made to the Ohio Sheep Improvement Association Ralph Grimshaw Memorial Scholarship Fund, 280 N. High St., Columbus, OH 43218. The fund is used to give scholarships to the youth of Ohio. Friends may express condolences to the family through [www.bairdfuneralhome.com](http://www.bairdfuneralhome.com).

**James Edward "Jim" Peifer**, 59, of Williamsville went to heaven healthy and whole on Sunday, October 27, 2013, at Sugar Creek Dementia Special Care in Normal, IL, following a long battle with frontotemporal dementia.

He was born on July 14, 1954 at St. Clara's Hospital in Lincoln, IL, the son of Vincent and Jean Warrens Peifer who both preceded him in death. He married Angela (Angie) Fowler on November 23, 1991 at Good Shepherd Lutheran church in Sherman, IL.

He is survived by his wife, his siblings Tom (Patty) Peifer, Lincoln; Mary Peifer (Jim Runyon), Peoria; Bob (Michelle) Peifer, Wildwood, MO; Ann (Marvin) Mosier, Colfax; Tim Peifer (fiancée Michelle Fulton), Springfield; and 14 nieces and nephews and six great nieces and nephews who loved "Uncle Jimmy" very, very much; and seven cousins.

Jim attended Carroll Catholic Grade school and was a 1973 graduate of Lincoln High School. He was a lifelong Logan County farmer and was proud to have worked with his dad and brother Tom on the farm that has been in their family for well over a century. Jim also raised purebred champion Suffolk sheep and had one of the premier herds in the country.

Jim was a member of Holy Family Catholic Parish, Lincoln, IL and the Knights of Columbus.

He and his wife loved to spend time at the beach and visited many of the Caribbean Islands, as well as their vacation home in Indian Shores, FL. Jim loved people and never met a stranger. His greatest joy was spending time with family and friends.

Services for Jim will be Saturday, November 2, 2013 at 1:00 p.m. at Holy Family Church of Lincoln with Rev. Claude Peifer officiating. Visitation will be Friday from 4:00-7:00 p.m. at Fricke-Calvert-Schrader Funeral Home, Lincoln with a prayer service at 3:30 p.m. led by Rev. James Stuenkel. Burial will be in St. Mary's Cemetery, Lincoln.

Memorial contributions may be made to the Association for Frontotemporal Degeneration ([theaftd.org](http://theaftd.org)), AFTD, Radnor Station Build 2, suite 320, 290 King of Prussia Road, Radnor, PA 19087. The AFTD provides research, education, support and advocacy on behalf of and for victims of frontotemporal dementia.

# Learning Opportunities

## **ASI Schedules Wool Classing School**

A Certified Wool Classing School is scheduled for Nov. 23-25 at the Hettinger Research Extension Center in Hettinger, N.D.

The focus of the school is to help train producers, wool industry and interested people about wool quality and classing. In addition, to assist in improving the quality of the domestic wool clip, which is imperative to American wool being more competitive and available in the international as well as domestic markets. Topics to be covered include wool fiber growth, development and production, objective measurement of wool and hands-on wool grading, to name a few.

Ron Cole, wool education consultant for the American Sheep Industry Association, and Lisa Surber, Ph.D., wool lab manager at Montana State University, will be providing the instruction for this course.

The cost for the course is \$175, which includes all handouts and materials.

Additional information for the course can be obtained by contacting Christopher Schauer at Christopher.schauer@ndsu.edu or by calling 701-567-4323.

## **Ethnic Marketing of Lamb and Mutton -- An Educational Program for U.S. Sheep Producers**

Sheep producers across the country are invited to participate in a four-session webinar series designed to explore the feasibility of marketing lamb and mutton to ethnic consumers.

This educational outreach has been jointly designed by Richard Brzozowski, University of Maine Cooperative Extension, Susan Schoenian, University of Maryland Extension, and Roger High, Ohio State University. It is being made available through a grant from the American Sheep Industry Association's (ASI) Let's Grow initiative to the state sheep associations of Maine, Maryland and Ohio. The series is free to anyone who wishes to participate.

The purpose of this multi-state effort is to equip sheep producers with skills and knowledge for effective marketing of sheep/lamb meat to ethnic communities in their respective market areas.

This outreach will be accomplished via a webinar series and will be supplemented by readings, self-driven activities, assignments and group discussions. Producers are encouraged to participate in each of the four sessions for a complete educational experience.

By the end of the series, webinar participants will be expected to:

1. Identify lamb consuming ethnic populations in their area by performing a demographic analysis of specific ethnicities using census data and other sources.
2. Learn about the ethnic consumers as well as the specific holy days and holidays when lamb is customarily preferred and the demand for lamb/mutton or specific value-added products is typically high.
3. Evaluate their production system to determine needed changes in breed(s), carcass size, lambing time and or management to meet this market if deemed feasible.
4. Adapt or create a marketing plan as a part of a business plan for their sheep operation to include an ethnic component (if appropriate).
5. Successfully answer an ethnic lamb marketing quiz with a score of at least 80 percent.

Each session will begin at 7 p.m. EST and is scheduled to last 60-90 minutes. The schedule is as follows:

Tuesday, Nov. 19 -- Ethnic Market Background

Tuesday, Nov. 26 -- Understanding the Ethnic Consumer

Tuesday, Dec. 3 -- Understanding and Evaluating Your Market Options

Tuesday, Dec. 10 -- Your Marketing Plan

To register for this free series and for more information about specific sessions, instructors and other related information go to <http://umaine.edu/livestock/sheep/ethnic-marketing-of-lamb-and-mutton>.

*(Continued on page 17)*



# Learning Opportunities

(Continued from page 16)

## Wisconsin Shearing School

Wisconsin's annual Beginning Sheep Shearing School will be held on Saturday and Sunday, Dec. 7-8, at the Sheep Unit, Arlington Agricultural Research Station, Arlington, Wisc.

The school will cover basic shearing skills including sheep handling, shearing positions, wool handling and equipment care and maintenance. The cost is \$75 per participant with all equipment being furnished. Participants are welcome to bring their own shearing equipment if they wish.

The registration deadline is Nov. 15 and enrollment will be limited to the number of students the space can accommodate. The school is organized by the Department of Animal Sciences, University of Wisconsin-Madison; Cooperative Extension, University of Wisconsin-Extension; and the Wisconsin Sheep Breeders Cooperative.

For additional information and to obtain registration information, contact Todd Taylor at [608-846-5858](tel:608-846-5858) or [toddtaylor@wisc.edu](mailto:toddtaylor@wisc.edu).

## Have something to share?



We're looking for photos, news, show and sale information, classified ads, recipes, helpful hints & tips, educational opportunities and questions for the question and answer section to include in the Suffolk Newsletter! Or anything else that may be of interest to fellow Suffolk Breeders you would like to share! If you have any suggestions on other items that should be included in the Suffolk Newsletter, please send those ideas as well!

Please submit information by the 25th of the month to be included in the following month's newsletter. Information can be emailed to [news@u-s-s-a.org](mailto:news@u-s-s-a.org) or contact the USSA Office.

## USSA FUTURITY PROGRAM Don't forget to send your Futurity Point Record Forms to the office.

### Ewe Lambs Futurity Standings

#### DISTRICT 1

At this time no points have been submitted to the USSA Office

#### DISTRICT 2

59pts Tayler Wolff, Oakes, ND, Quam 11193

54pts Tayler Wolff, Oakes, ND, Quam 11192

42pts Rhett Zelinsky, Brookings, SD, Kimm 09074-13124

23 pts Raesa Zelinsky, Brookings, SD, Kimm 10124-13337

#### DISTRICT 3

74pts Jacklyn Oelke, Barrett, MN, Hawkins 1302

#### DISTRICT 4

53pts Clayton Henderson, Atlanta, IN, Quam 11220

43pts Brady Henderson, Atlanta, IN, MacCauley 2774

### Yearling Ewe Futurity Standings

46pts Tayler Wolff, Oakes, ND, Benda 2015 RR

45pts Tayler Wolff, Oakes, ND, Quam 11023

25pts Katherine Newhouse, State Center, IA, Damman Suffolks 12-138

# CLASSIFIED ADS

*USSA Members only. Ads are free. Must be sheep related: animals, vehicles, trailers, equipment, transportation, working dogs, etc. Include your contact information. Email you ad to: news<sup>™</sup> u-s-s-a.org. The newsletter may not contain all of the classified ads or include photos that are posted with the classified ad. To find a full listing, please visit our website: [www.u-s-s-a.org](http://www.u-s-s-a.org).*

## **For Sale: Bred Ewes**

Bred ewes 2-5 years old, these ewes were purchased from some of the top flocks in the country. Downsizing preparing to transfer to four year university to continue pursuing ag degree.

For More Information: Jason Johnstone, 618-843-2329 or 618-869-2329

## **For Sale: Great Pyrenees Pups**

Great Pyrenees pups, born 08/30/13.

Working parents, farm raised with sheep.

For More Information: Jason Johnstone, 618-843-2329 or 618-869-2329

## **Rams for sale**

MacCauley 2715 RR AKA "East Star" DOB 9/2/12- Super Correct and very sharp Pix below. He was the Grand Champion Ram at the Illini Spring Show. He comes from a long list of national Champions on his sires side all MacCauley's including 2479, 2130, 1955, he also has DTR's "Goldstreak" and Lost River's "Indian Outlaw" in his pedigree. His dam is MacCauley 2504, His sire is Mac 2479. He is a great ram and a very aggressive breeder and he comes from some of the best genetics in the business. \$1500 OBO

5 Star J 13-3115 RR AKA "EYE Doctor" Triplet DOB 3/2/13- Super correct and great looking ram out of Prairie Rose 1712-3 Ram from the 2012 Nugget who was the 2nd highest selling ram that year, he has Luxford's "Yukon Jack", "Cobra", and "Great Divide" in his pedigree. The dam is 5 Star J 5103 who comes from Luxford "Deep Pockets". He is also a great ram with a tremendous pedigree. \$800 OBO

These excellent rams Serviced my ewe lambs and now I am looking to pass them up.

For more information or pix call: Mark Weisberg, Weisberg Suffolks, Webster City, Iowa, 515-835-9230

## **Bred Ewes and a Ewe lamb for sale \$350**

1303RR Ewe lamb DOB 2/5/13 out of Heggemeier 10-28 "SJ" and Schluensen 08-0089. Bred to 5\*J 3115-13 RR, who's Sire is Prairie Rose 1712-3. She is the biggest ewe lamb in the keeper pen, and fast grower with many strengths. \$250

2 bred Ewes- Kimm 12234RR/NN Twin DOB 6/2/13 she is out of Baglen 9566 "Wales" and Kimm 07117. She is bred to a Donner Trail Ranch Ram the son of National Champion Tracklayer. This ram was DTR's lead Nuggett-Reno ram for 2013. \$500 Touchdown Acres 9154 Twin DOB 2/12/09 ewe is bred to a MacCauley Ram out of 5\*J 0155 who sold for \$13,000 in Sedalia in 2012. The ewe is from Burke 6038 on the sire's side and Gamble 301 from Gambles "Black Jack" on the dams side. A great dam. She dammed two keeper lambs for me last year and so I decided to let her go. \$500

Possibly More for sale upon demand. These are all very correct and super sharp looking ewes.

For More Information: Mark Weisberg, Weisberg Suffolks, Webster City, Iowa, 515-835-9230

(Continued on page 20)

**IS THERE SOMETHING YOU WOULD LIKE TO SEE IN THE NEWSLETTER?**

EMAIL THE USSA OFFICE: [news@u-s-s-a.org](mailto:news@u-s-s-a.org)

# 2013

## NORTH AMERICAN INTERNATIONAL LIVESTOCK EXPOSITION

### USSA Calendar of Events for NAILE

#### **Friday, November 15-**

Lead Line at 1pm  
Market Lamb & Jr. Breeding Showmanship at 5pm  
Market Lamb Momma Sale 7pm

#### **Saturday, November 16 -**

Jr. Wether Show at 8am  
UJSSA Pizza Party at noon  
Suffolk Sale at 3:30pm  
UJSSA Board Meeting at 6pm

#### **Sunday, November 17 -**

Junior Breeding Sheep Show at 8am, Ring 2

#### **Monday, November 18 -**

USSA Board Meetings at 8pm

#### **Tuesday, November 19 -**

USSA Annual Meeting & Dinner 6:30pm, social hour begins at 5:30pm

#### **Wednesday, November 19 -**

Open Suffolk Show at 8am

#### **Friday, November 1-**

Supreme Champion 11am

### Judges for NAILE Suffolk Shows

Junior Wether Show — Logan MacLennan, Byers, CO  
Junior Breeding Show— Tim Fleener, Robeson, PA  
Open Show— Slick: Paul Kuber, Columbus, OH  
Fitted: Mark Johnson, Sandwich, IL

### Open Show Entry Fees

#### **NAILE Open Show Participants -**

Just a reminder that the entry fee of \$5 per head needs to be paid to the USSA prior to the events at NAILE, for those who do not pay, will be prohibited from participating. If the entry fee is collected at NAILE, the entry fee will increase to \$10 per head.

### NAILE Market Lamb Show – Suffolk Division

Again this year, but a little revised, the USSA will be providing special monies to UJSSA members showing Suffolk market lambs at the 2012 NAILE Market Lamb Show.

The USSA will award \$1000 to the Champion Suffolk Market Lamb, \$500 to the Reserve Champion Market Lamb, and within each Suffolk Market Lamb Class, \$50 for 1<sup>st</sup> place and

\$25 for 2<sup>nd</sup> place. To be eligible for this prize money, each Suffolk market lamb, at the time of weigh-in and classification, will be required to have a Suffolk Market Lamb Certificate. Certificates may be obtained from the USSA office (P.O. Box 995, Ottumwa, IA 52501) or at the time of classification.



This award money will only be available to individuals whom:

- (1) Pay for a United Junior Suffolk Sheep Association (UJSSA) Membership at the rate of \$15 or are a current UJSSA member

**AND**

- (2) Purchase a wether certificate from the USSA at the rate of \$10 per lamb.



(Continued from page 18)

# More Classified Ads

## Bred Ewes and Ram For Sale

4 bred ewes - 3 year olds, RR, bred to Bunker Hill Grandson - \$750/each firm  
1 ram for sale - RR - \$750

For More Information: Don Craft, 765-490-6619 (cell), 574-967-3091 (home)

## RR Suffolk Ram For Sale

Proven, excellent RR Suffolk Ram, 2 year old twin. Asking \$400.

For More Information: Lesnet Farms, 419-485-0435



**GIVE A TURKEY A BREAK -  
EAT LAMB THIS THANKSGIVING.**

Image from [Frederick County Sheep Breeders Association](#). Turkey artwork was developed by Holly Porter, Marketing Department, Mid-Atlantic Farm Credit.

## Layered Lamb Stuffing with Mushroom Sauce

Lamb steaks or chops

Cream of mushroom or celery soup

### Stuffing recipe:

1/2 cup bread crumbs

1 large onion

1 egg, beaten

Salt & pepper

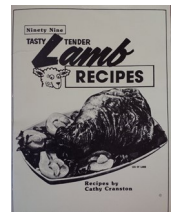
Oregano, garlic, tarragon (to taste)

Bouillon to make stuffing firm

Variations: celery, mushrooms, browned ground lamb, chestnuts, onions

Cut as much fat off meat as possible. Layer lamb and stuffing in greased casserole pan. Cover and bake for 20 minutes at 350 degrees. Pour off grease. Add soup. Turn down heat to 325 degrees and cook for one hour. (May use slow cooker)

USSA Member, LaVonne Beckler, Fergus Falls, MN gives this cookbook to all of her customers who purchase locker lambs from her. She says that her customers really like this cookbook as it has many lamb recipes. If you would like more information about this cookbook please contact LaVonne at 218-770-9731 or clbeckler@hotmail. Thanks, LaVonne, for sharing this cookbook!



## *A Great Recipe for Ewe to Try!*

Do you have a lamb recipe that is absolutely delicious you want to share? Do you have a child or junior that loves to cook? We'll feature their recipes, too! Please email it to [news@u-s-s-a.org](mailto:news@u-s-s-a.org) and it may be featured in an upcoming

**United Suffolk Sheep  
Association**

PO Box 995  
Ottumwa, IA 52501

Phone: 641.684.5291

Fax: 641.682.9449

E-mail: [info@u-s-s-a.org](mailto:info@u-s-s-a.org)



We're on the Web!

[www.u-s-s-a.org](http://www.u-s-s-a.org)

[www.ujssa.oreg](http://www.ujssa.oreg)

# Suffolk Scenes



Pasture whispers

Submitted by Mike O'Neill

## Sheep Resources

The USSA Office often gets phone calls asking for resources producers can go to for sheep-related questions. The following are resources the office is aware of for producers to use. Since this may not be a complete list, if there are additional resources that you use and would like to share please email those to [news@u-s-s-a.org](mailto:news@u-s-s-a.org).

### New Sheep Producer Resource Website

Sheep Community of Practice is a new web-based tool available to sheep producers through the eXtension Foundation, a non-profit entity. This website offers a Ask the Expert Tool that will connect you with experts and allow you to ask questions. Through the Ask the Expert Tool, the producer can even attach images. The website also offers information about sheep feeding and nutrition, reproduction and breeding, management practices, genetic selection, health and veterinary care, grazing and pasture, and wool. To visit the Sheep Community of Practice website go to: <http://www.extension.org/sheep>

### Ask a Sheep Vet

This website is a blog written by sheep veterinarian Dr. Kennedy of Pipestone Veterinary Clinic, Pipestone, MN. The blog contains answers to various sheep related questions, with new information added often. To visit Dr. Kennedy's blog please go to: <http://askavetsheep.wordpress.com/> Also, if you "LIKE" [Pipestone Vet Sheep-Goats](#) on Facebook, are several question and answers posted daily.

### A Guide to All Things Sheep©

A Guide to All Things Sheep© is a new resource for sheep breeders and producers by Premier 1 that offers information on several topics from educational guides, how to's, photos, recipes, an events calendar, view points and industry spotlights. To visit A Guide to All Things Sheep© please visit: [www.premier1supplies.com/sheep-guide/](http://www.premier1supplies.com/sheep-guide/)

Check out the USSA Facebook page!

